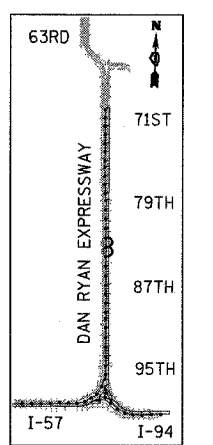
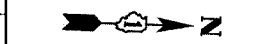
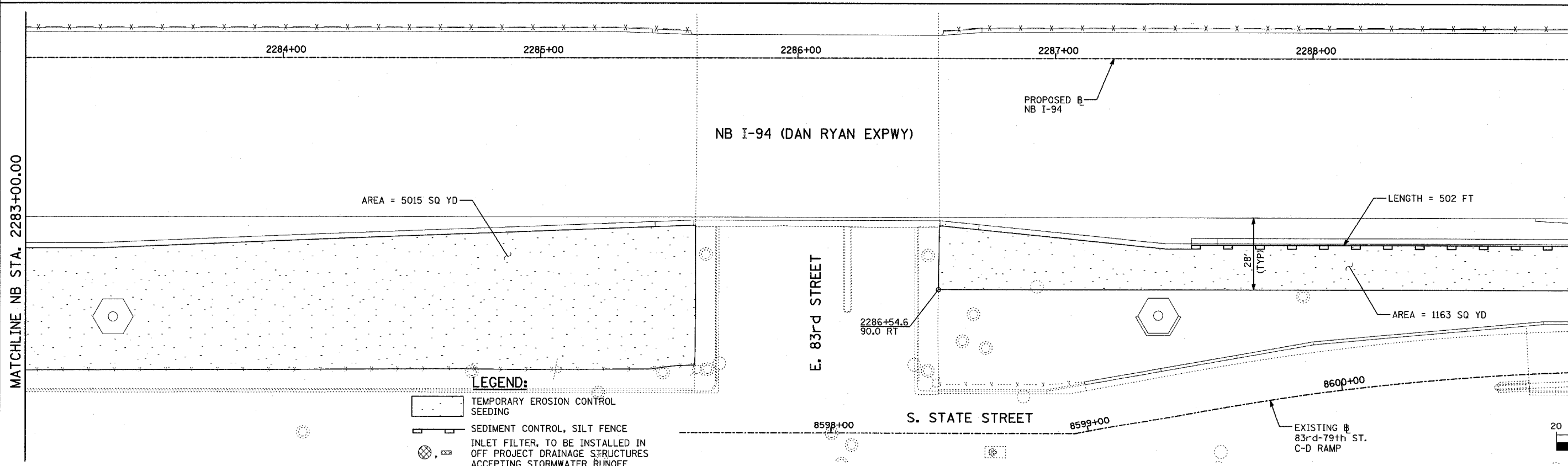
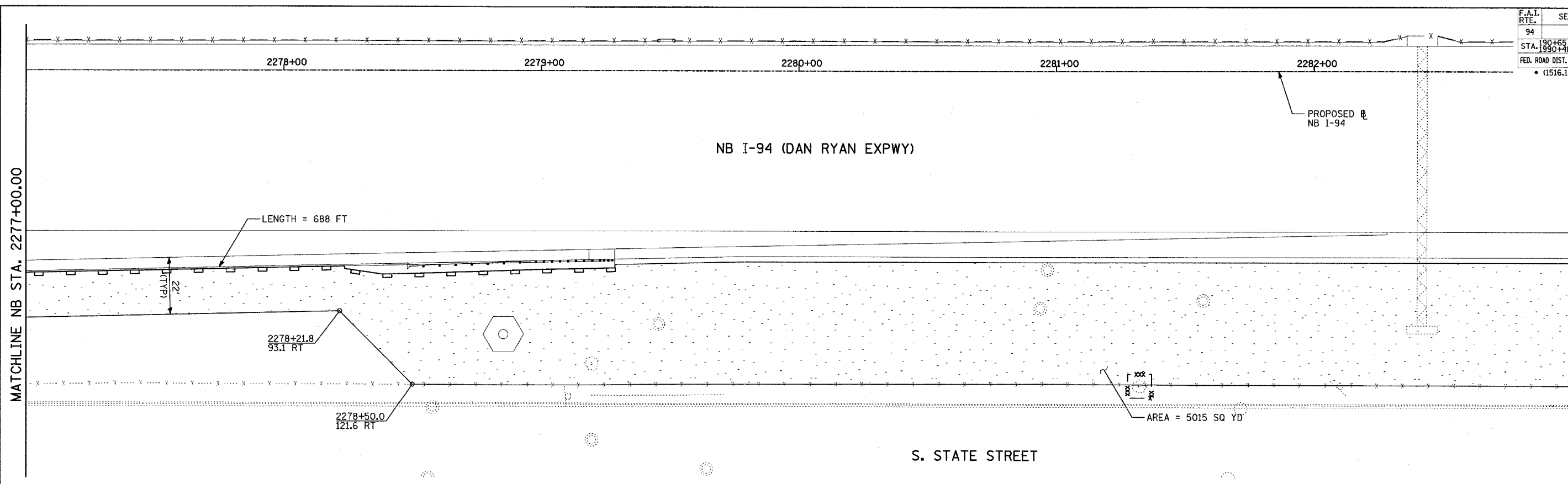
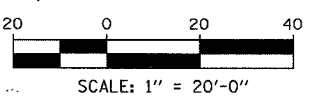


F.A.I. RTE.	SECTION	COUNTY	TOTAL SHEETS	SHEET NO.
94	*	COOK	916	300
STA. 190+65 (NB I-57) TO STA. 2316+00 (NB RYAN)				
FED. ROAD DIST. NO. ILLINOIS FED. AID PROJECT				
* (1516.1, 1717, & 1818) R-4 62304				



LOCATION MAP



LEGEND:

- TEMPORARY EROSION CONTROL SEEDING
- SEDIMENT CONTROL, SILT FENCE
- INLET FILTER, TO BE INSTALLED IN OFF PROJECT DRAINAGE STRUCTURES ACCEPTING STORMWATER RUNOFF
- TEMPORARY FENCE
- TEMPORARY DITCH CHECK
- PROPOSED DRAINAGE SWALE (SEE DRAINAGE PLANS)
- EXISTING DRAINAGE SWALE
- TEMPORARY FENCE FOR TREE PROTECTION (15 FEET PER SIDE = 60 FEET TOTAL)

TOTAL NUMBER OF INLET FILTERS THIS SHEET: 0
 TOTAL NUMBER OF TEMPORARY DITCH CHECKS THIS SHEET: 0
 TOTAL NUMBER OF TREES TO BE PROTECTED THIS SHEET: 1

REVISIONS	
NAME	DATE

ILLINOIS DEPARTMENT OF TRANSPORTATION
 F.A.I. 94 (DAN RYAN EXPRESSWAY)
 EROSION CONTROL PLAN
 NB I-94 (DAN RYAN EXPRESSWAY)
 STA. 2277+00.00 TO 2289+00.00
 (SHEET 18 OF 28)
 SCALE: 1"=20'
 DATE: MARCH 7, 2006
 DRAWN BY: JJS
 CHECKED BY: MPG

TYLIN INTERNATIONAL

P:\0273\road\0206\020620\051836.dgn 03/03/2006 09:53:37 AM