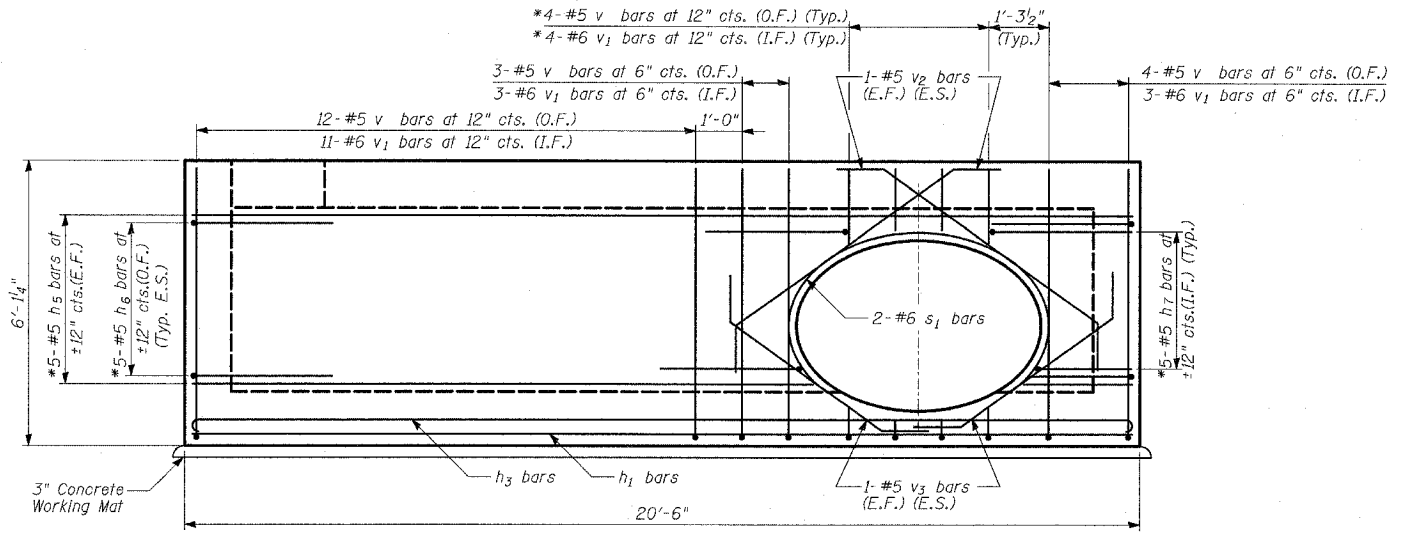
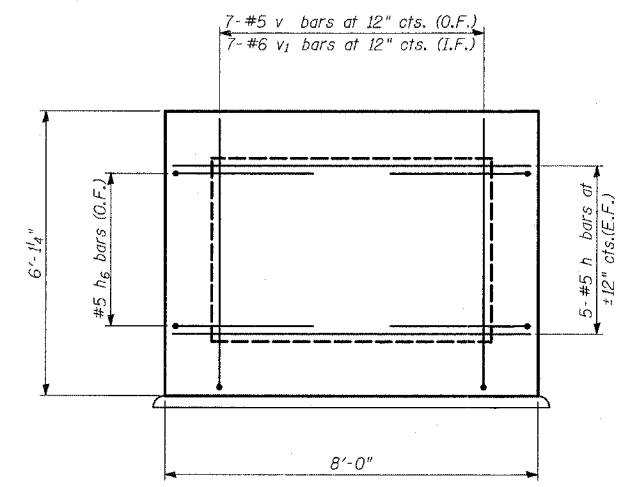


**BILL OF MATERIAL**

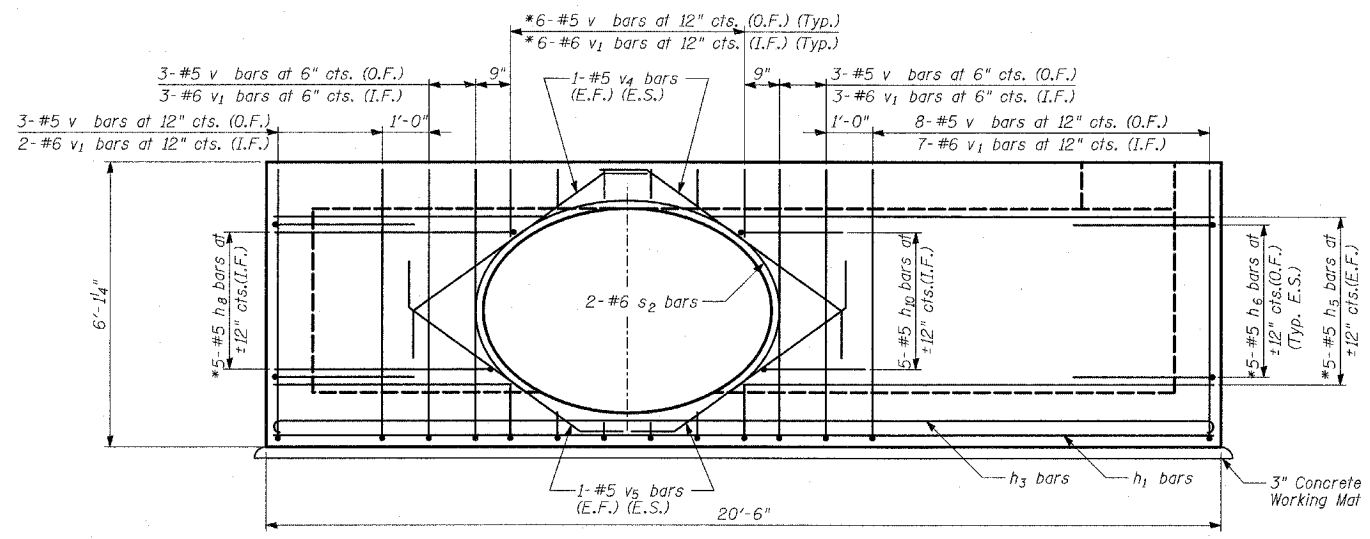
Bar No.	Size	Length	Shape
a	4 #5	2'-2"	—
a1	12 #5	4'-8"	—
a2	42 #6	7'-8"	—
a3	3 #8	7'-8"	—
a4	40 #8	9'-6"	—
a5	8 #8	9'-2"	—
a6	4 #8	8'-10"	—
h	20 #5	7'-8"	—
h1	17 #6	20'-2"	—
h2	3 #8	20'-2"	—
h3	19 #6	21'-6"	—
h4	3 #8	22'-0"	—
h5	20 #5	20'-2"	—
h6	20 #5	6'-0"	—
h7	10 #5	4'-2"	—
h8	5 #5	7'-7"	—
h9	8 #5	3'-6"	—
h10	5 #5	4'-1"	—
s	2 #5	9'-6"	—
s1	2 #5	11'-0"	—
s2	2 #5	13'-2"	—
v	60 #5	8'-7"	—
v1	56 #6	6'-8"	—
v2	4 #5	7'-9"	—
v3	4 #5	6'-0"	—
v4	4 #5	7'-2"	—
v5	4 #5	5'-6"	—
Reinforcement Bars	POUND	5,520	
Concrete Structures	CU YD	20	



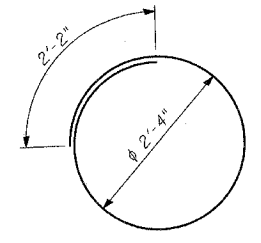
**SECTION B-B**



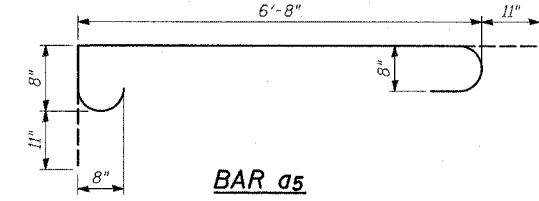
**SECTION D-D**  
(Opposite Wall Typical)



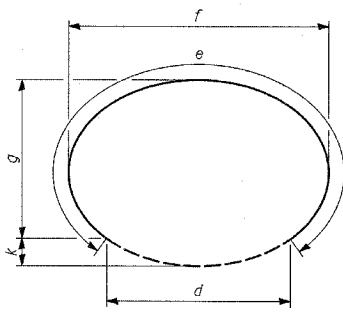
**SECTION E-E**



**BARS s**

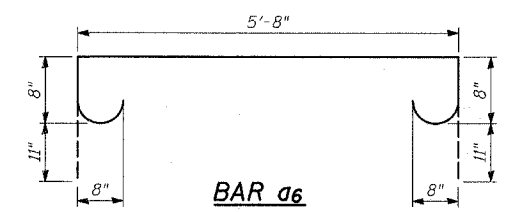


**BAR a5**

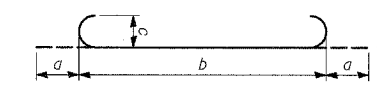


**BARS s1 & s2**

Bar	d	e	f	g	k
s1	3'-11 1/4"	11'-0"	5'-7"	3'-5"	7"
s2	4'-4 3/8"	13'-2"	6'-6 1/4"	4'-1 1/4"	7 1/4"



**BAR a6**

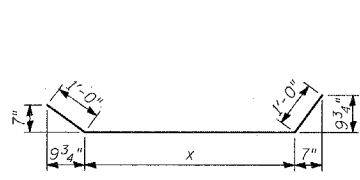


**BARS a4, h3 & h4**

Bar	a	b	c
a4	11"	7'-8"	8"
h3	8"	20'-2"	6"
h4	11"	20'-2"	8"

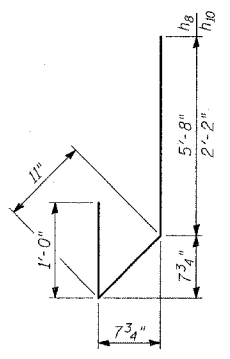
**NOTES:**

- All dimensions and elevations shall be field verified prior to construction.
- Concrete pipe sizes shall be coordinated with openings provided into junction chamber before pouring concrete.
- Manhole Frame, Ladder Rungs, and any inserts installation shall be coordinated with Roadway Plans.
- Concrete cover for reinforcement steel to be 2" unless otherwise noted.
- All concrete edges shall be chamfered 1 inch.
- All lap splices marked on the drawings are minimum.
- Concrete Compressive Strength  $f_c' = 3,500$  psi.
- Steel Yield Strength = 60,000 psi.
- Work this Sheet with Sheets 1 and 2 of 3.

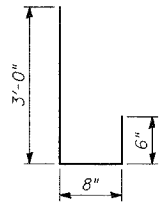


**BARS v2, v3, v4 & v5**

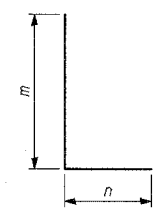
Bar	x
v2	5'-9"
v3	4'-0"
v4	5'-2"
v5	4'-6"



**BAR h8 & h10**



**BAR h7**



**BARS h6, v & v1**

Bar	m	n
h6	3'-0"	3'-0"
v	5'-8"	2'-11"
v1	5'-8"	1'-0"

**LEGEND:**

- \* Cut bars to fit in field.
- E.F. - denotes Each Face
- E.S. - denotes Each Side
- I.F. - denotes Inside Face
- O.F. - denotes Outside Face

REVISIONS	
NAME	DATE

ILLINOIS DEPARTMENT OF TRANSPORTATION  
F.A.I. 94 (DAN RYAN EXPRESSWAY)

**JUNCTION CHAMBER 157  
DETAILS 2**

S.N. DESIGNED BY: MAF, PL  
SCALE: N.T.S. DRAWN BY: MAF, PL  
DATE: MARCH 7, 2006 CHECKED BY: MI