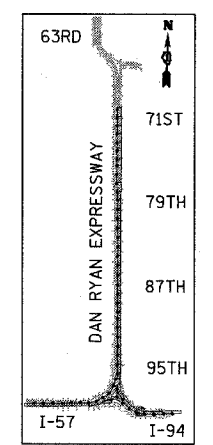
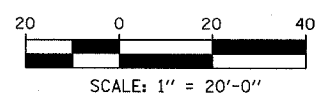


MATCHLINE NB STA. 2013+00.00

MATCHLINE NB STA. 2018+00.00



LOCATION MAP



PAVEMENT MARKING NOTES:

- PAVEMENT MARKINGS SHALL BE IN ACCORDANCE WITH IDOT DISTRICT ONE STANDARD TC-12. RAISED PAVEMENT MARKERS SHALL NOT BE INSTALLED, EXCEPT AS SHOWN ON THE PLANS.
- THE RESIDENT ENGINEER SHALL CONTACT JULIA FOX (847) 705-4151, EXPRESSWAY TRAFFIC CONTROL SUPERVISOR, PRIOR TO PLACING ANY PAVEMENT MARKINGS.

REVISIONS	
NAME	DATE

ILLINOIS DEPARTMENT OF TRANSPORTATION
 F.A.I. 94 (DAN RYAN EXPRESSWAY)
 PAVEMENT MARKING PLAN
 NB I-94 (FORD) AND WB I-94 TO I-57
 CONNECTOR - NB I-94 STA. 2013+00.00
 TO 2018+00.00 (SHEET 25 OF 29)
 SCALE: 1"=20' DRAWN BY: JJS
 DATE: MARCH 7, 2006 CHECKED BY: AMB

TYLIN INTERNATIONAL

03/03/2006 10:23:28 AM