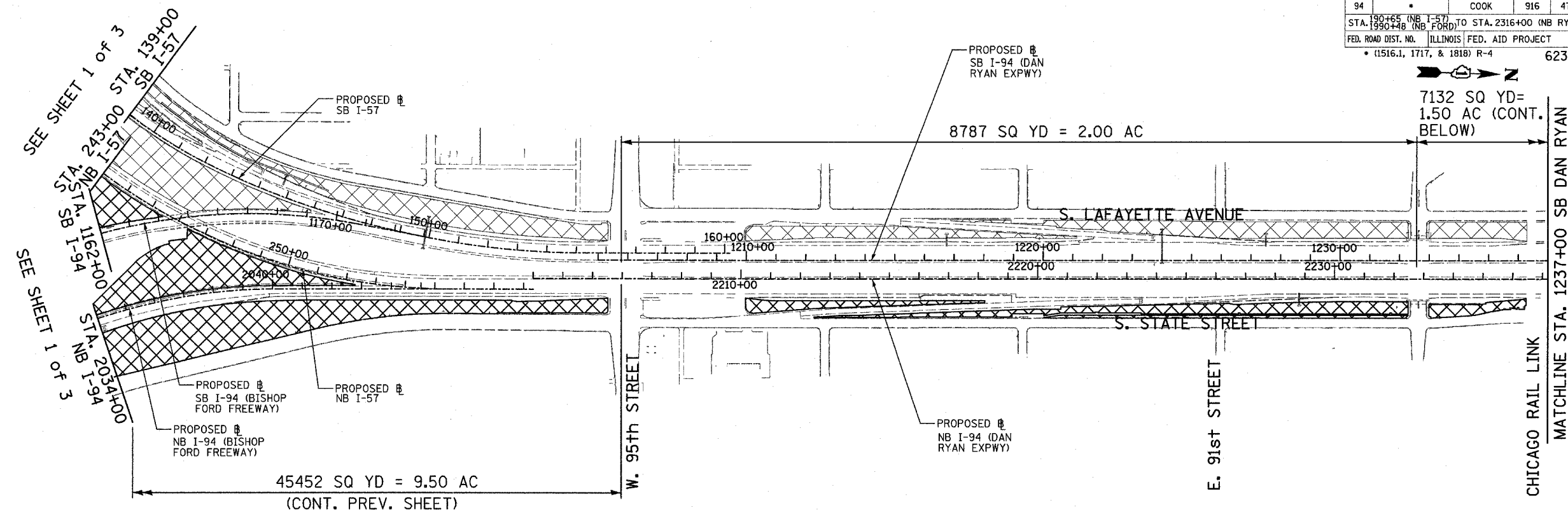


F.A.I. RTE.	SECTION	COUNTY	TOTAL SHEETS	SHEET NO.
94	*	COOK	916	476
STA. 190+65 (NB I-57) TO STA. 2316+00 (NB RYAN)				
STA. 1990+48 (NB FORD)				
FED. ROAD DIST. NO. ILLINOIS FED. AID PROJECT				
* (1516.1, 1717, & 1818) R-4				
				62304



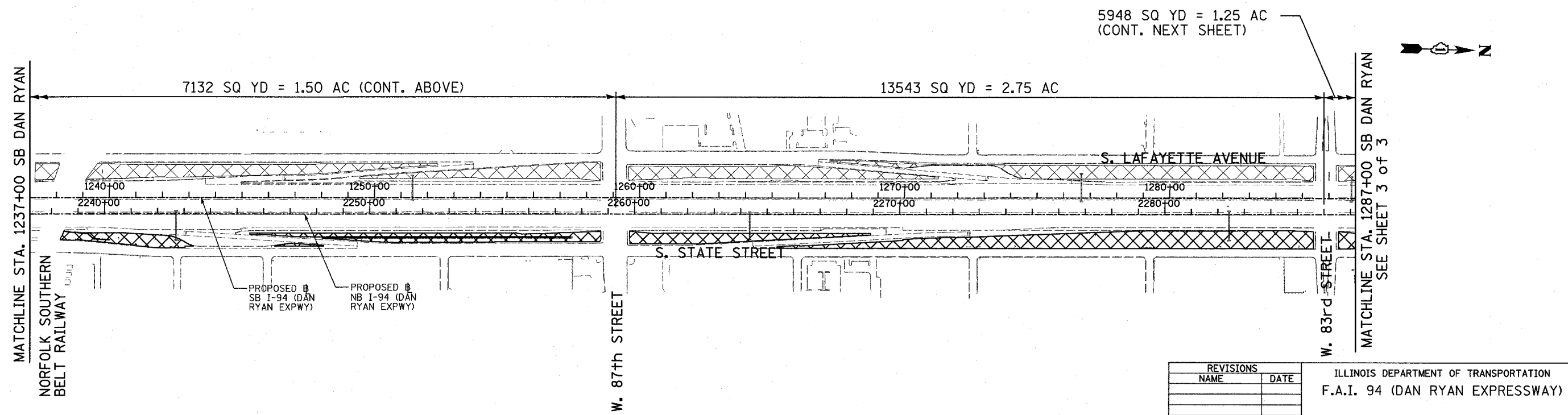
SEE SHEET 1 OF 3  
 STA. 243+00  
 STA. 139+00  
 SB I-57  
 STA. 1162+00  
 STA. 2034+00  
 SB I-94

**LEGEND**

- MOWING AREAS THIS CONTRACT
- MOWING AREAS CONTRACTS 62593 & 60B18

**NOTES**

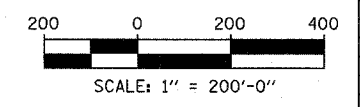
COORDINATE MOWING IN INTERCHANGE WITH CONTRACT 62593



MATCHLINE STA. 1237+00 SB DAN RYAN  
 NORFOLK SOUTHERN BELT RAILWAY

MATCHLINE STA. 1287+00 SB DAN RYAN  
 SEE SHEET 3 OF 3

**TYLIN** INTERNATIONAL



REVISIONS	
NAME	DATE

ILLINOIS DEPARTMENT OF TRANSPORTATION  
 F.A.I. 94 (DAN RYAN EXPRESSWAY)

**MOWING AREAS**  
 SHEET 2 OF 3

SCALE: 1" = 200'  
 DATE: MARCH 7, 2006

DRAWN BY: RTM  
 CHECKED BY: MPG

3/3/2006 4:29:45 PM  
 P:\0237\_3\road\c20\mow\20ist0237.dgn