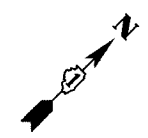
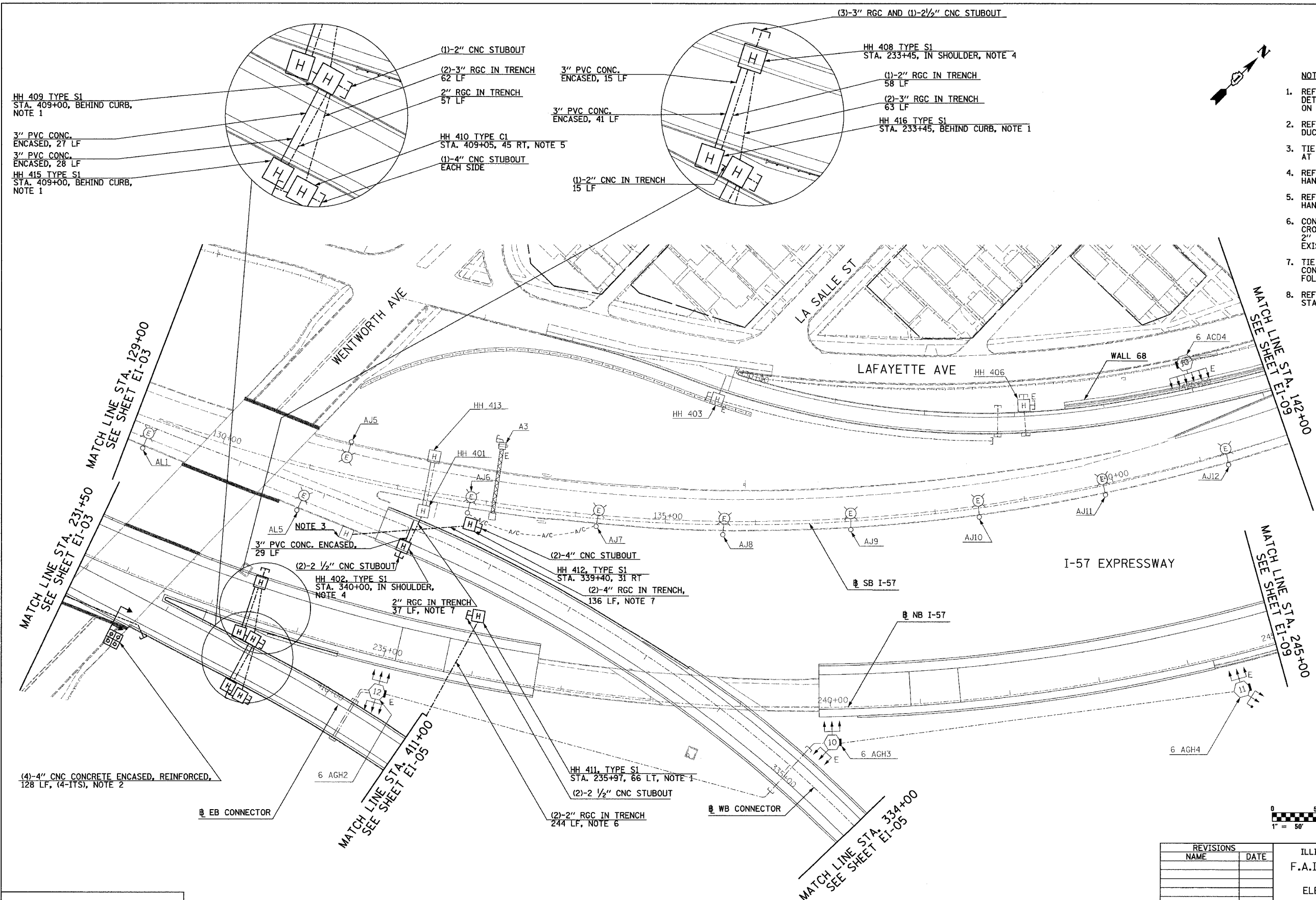


F.A.I. RTE.	SECTION	COUNTY	TOTAL SHEETS	SHEET NO.
94	*	COOK	96	501
STA. 231+50		TO STA. 245+00		
FED. ROAD DIST. NO.		ILLINOIS FED. AID PROJECT		
* (1516.1, 1717, & 1818) R-4		62304		

NOTES:

1. REFER TO SHEET EI-106 FOR HANDHOLE DETAILS. INSTALL HANDHOLE AS SHOWN ON SHEET EI-110.
2. REFER TO SHEET EI-102 AND EI-103 FOR DUCTBANK INSTALLATION DETAILS.
3. TIE 2-4" RGC TO EXISTING TSC HANDHOLE AT STA. 340+60.
4. REFER TO SHEET EI-106 AND EI-110 FOR HANDHOLE DETAIL.
5. REFER TO SHEET EI-107 FOR TYPE C1 HANDHOLE DETAIL.
6. CONTRACTOR TO EXERCISE CAUTION WHERE CROSSING EXISTING UNDERGROUND UNITDUCT. 2" RGC TO BE TRENCHED TO PASS UNDER EXISTING UNITDUCT.
7. TIE 2" RGC INTO EXISTING HANDHOLE HH 401. CONDUIT CROSSOVER INSTALLATION SHALL FOLLOW THE ROADWAY STAGE CONSTRUCTION.
8. REFER TO SHEET EI-115 FOR DETECTOR STATION LAYOUT.



20/EI-04

REVISIONS	
NAME	DATE

ILLINOIS DEPARTMENT OF TRANSPORTATION
 F.A.I. 94 (DAN RYAN EXPRESSWAY)
 ELECTRICAL INFRASTRUCTURE PLANS
 PROPOSED IMPROVEMENTS
 STA. 231+50 TO STA. 245+00
 SCALE: 1"=50' DRAWN BY: VK
 DATE: MARCH 7, 2006 CHECKED BY: TM

SINGH 300 W. ADAMS ST.
 CHICAGO, IL 60606
 SINGH & ASSOCIATES, INC. TEL: (312) 629-0240
 CONSULTING ENGINEERS FAX: (312) 629-8449

J:\075\egnr\0217536.e\04-2005.rvt 3/7/2006 1:43:53 PM