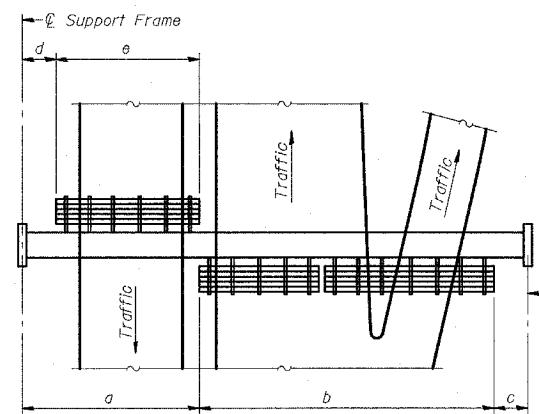
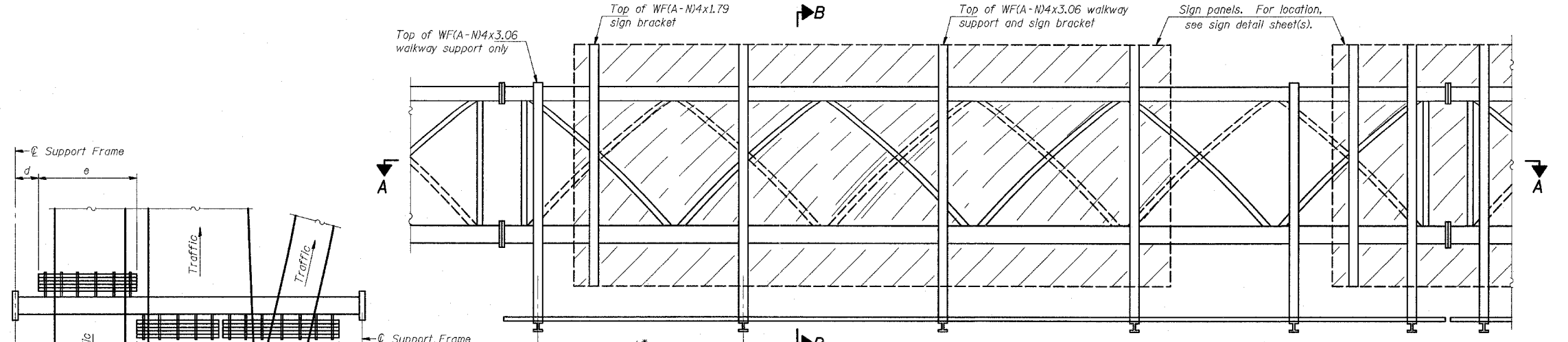
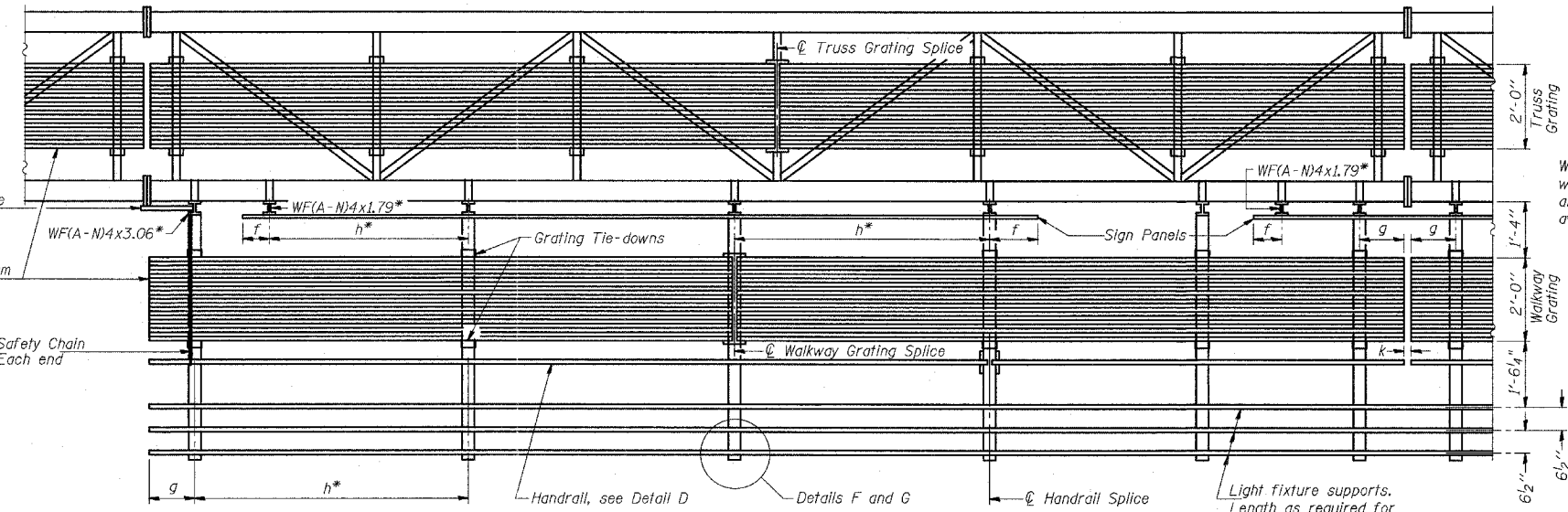


STATE OF ILLINOIS
DEPARTMENT OF TRANSPORTATION



BRACKET TABLE

Sign Width		Number Brackets Required
Greater Than	Less Than or Equal To	
	8'-0"	2
8'-0"	14'-0"	3
14'-0"	20'-0"	4
20'-0"	26'-0"	5
26'-0"	32'-0"	6



Notes: *Space walkway brackets WF(A-N)4x3.06 and sign brackets WF(A-N)4x1.79 for efficiency and within limits shown:
 f = 12" maximum, 4" minimum (End of sign to center of nearest bracket)
 g = 12" maximum, 4" minimum (End of walkway grating to center of nearest support bracket)
 h = 6'-0" maximum (center to center of sign and/or walkway support brackets, WF(A-N)4x1.79 or WF(A-N)4x3.06)
 k = 2" maximum gap between adjacent walkway grating sections and handrail ends
 **If walkway bracket at safety chain location is behind sign, add angle to bracket, see Alternate Safety Chain Attachment on Base Sheet OS-A-11.
 For Details T and W, Section B-B and Grating Splice Details, see Base Sheet OS-A-10.
 For Details D, F, G and P and Handrail Splice Details, see Base Sheet OS-A-11.

Structure Number	Station	a	b	c	d	e	Walkway Grating and Handrail Lengths
ISO161057L358.0	334+00	36.11'	32.00'	16.89'	-	-	32.00'
ISO161094L063.8	2006+00	10.06'	54.00'	31.94'	-	-	54.00'

OS-A-9 11/1/2002

DESIGNED -	20
CHECKED -	EXAMINED
DRAWN -	PASSED
CHECKED -	

NUMBER	REVISION	DATE

TYLIN INTERNATIONAL

REVISIONS	
NAME	DATE

ILLINOIS DEPARTMENT OF TRANSPORTATION
F.A.I. 94 (DAN RYAN EXPRESSWAY)

**OVERHEAD SIGN STRUCTURES
ALUMINUM WALKWAY DETAILS**

SCALE: AS NOTED DRAWN BY: AMB
DATE: MARCH 7, 2006 CHECKED BY: TB