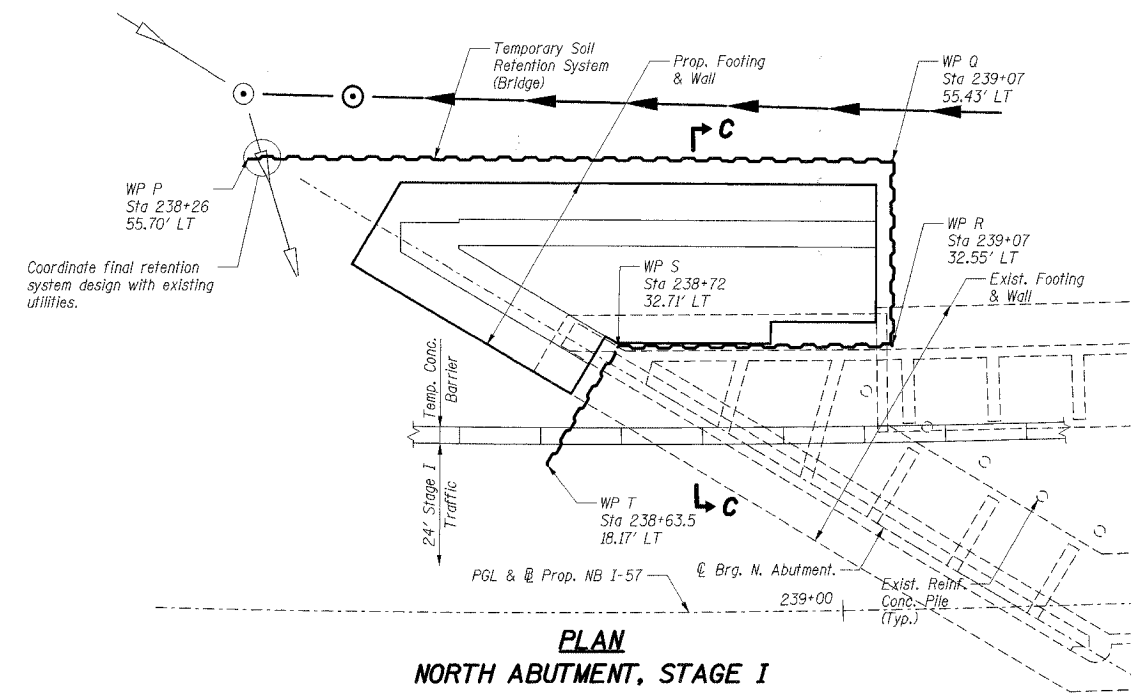
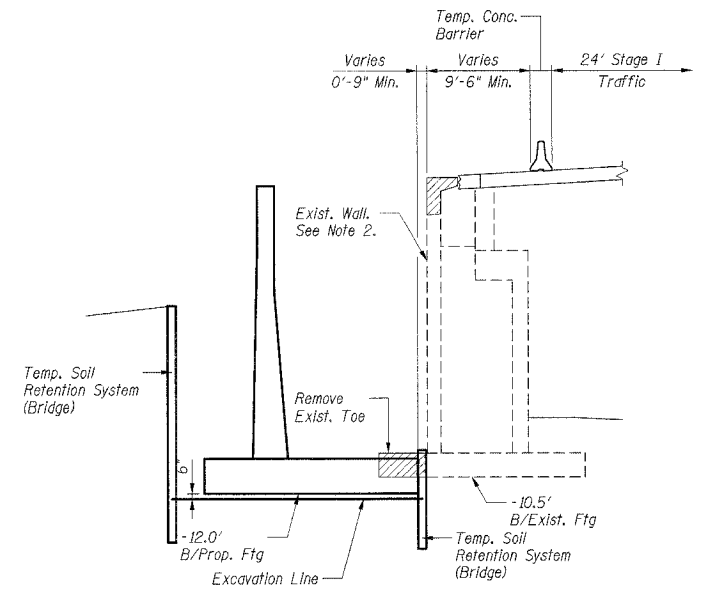


F.A.I. RTE.	SECTION	COUNTY	TOTAL SHEETS	SHEET NO.
57	*	COOK	916	585
STA.	TO STA.			
FED. ROAD DIST. NO. ILLINOIS FED. AID PROJECT				
CONTRACT NO. 62304				
*(1516.1, 1717, & 1818) R-4				



**PLAN
NORTH ABUTMENT, STAGE I**

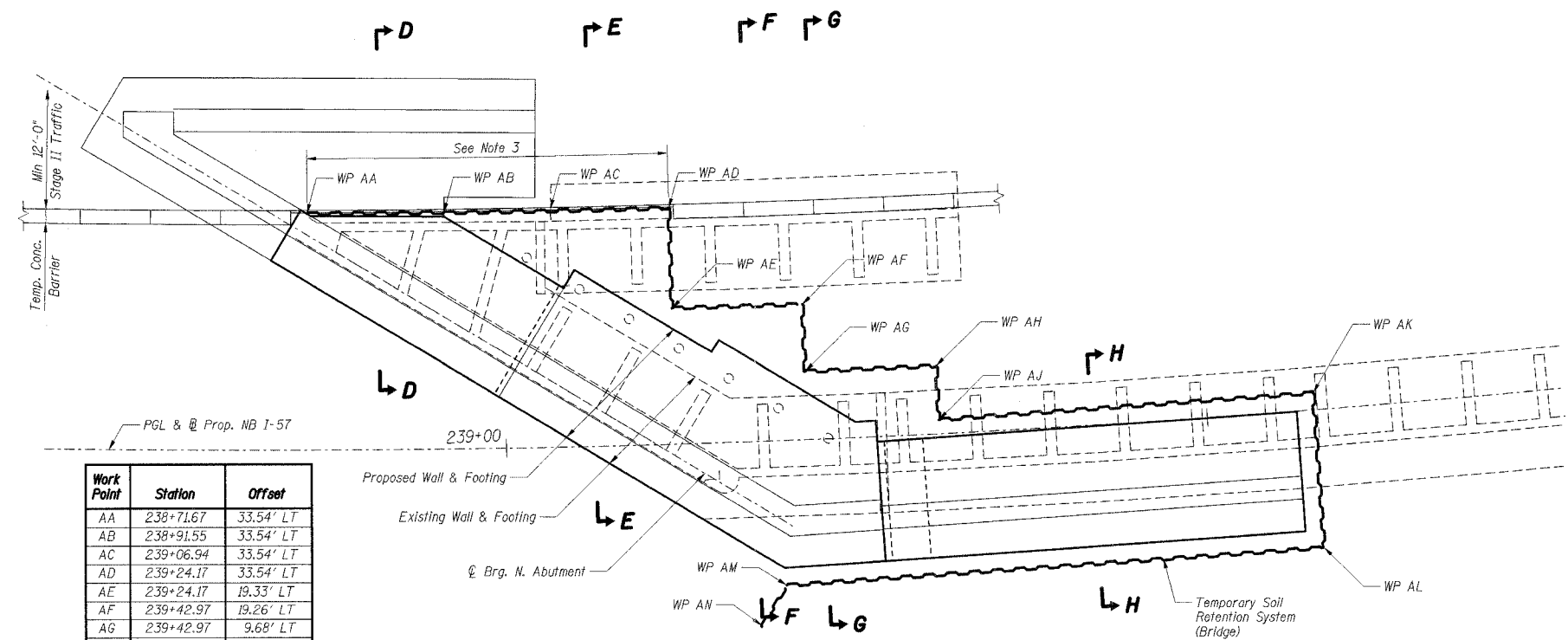
Note: Excavation work & installation of retention system between work points S & T cannot be completed until WB connector traffic is put into Stage Ia configuration. See maintenance of traffic plans.



SECTION C-C

- Legend:
- Removal of Existing Structures
 - Existing buried sewer - Contract 62593
 - Proposed buried sewer - This Contract

- Notes:
- Work this Sheet with Sheet S-009. For Sections D-D Through H-H, see Sheet S-010.
 - Layout shown is based on use of existing northwest retaining wall as part of the Stage I retention system. Contractor may vary the layout to include removal of the existing wall in Stage I, subject to the approval of the Engineer.
 - Clearance between Stage II traffic and Stage II removal work will not permit the placement of Temporary Concrete Barrier in the limits between work points WP AA and WP AD. Within these limits, the Temporary Soil Retention System design shall accommodate an integrated bridge railing. Design loading shall be 10 kips distributed along a 5' length of rail, 2'-3" above pavement. IDOT standard drawing for Temporary Bridge Rail (Bridge Manual drawing R-25) provides details which may be adapted for integration to the retention system. Details of the railing shall be included with the Temporary Soil Retention System design submittals. Cost included with Temporary Soil Retention System.
 - For removal of existing structures, see Sht. S-004.
 - For buried utilities, coordinate with Drainage and Utility plans in this Contract and in IDOT Contract No. 62593.



Work Point	Station	Offset
AA	238+71.67	33.54' LT
AB	238+91.55	33.54' LT
AC	239+06.94	33.54' LT
AD	239+24.17	33.54' LT
AE	239+24.17	19.33' LT
AF	239+42.97	19.26' LT
AG	239+42.97	9.68' LT
AH	239+61.76	9.65' LT
AJ	239+61.76	2.00' LT
AK	240+15.30	2.41' LT
AL	240+15.16	19.59' RT
AM	239+39.15	20.63' RT
AN	239+35.33	26.51' RT

**PLAN
NORTH ABUTMENT, STAGE II**

BILL OF MATERIAL		
Item	Unit	Total
Temporary Soil Retention System (Bridge)	Sq Ft	7807

SHT. S-008

REVISIONS	
NAME	DATE

ILLINOIS DEPARTMENT OF TRANSPORTATION
 F.A.I. ROUTE 57 (INTERSTATE 57)
 I-57 NB OVER WB CONNECTOR
 SN 016-0072 OLD, SN 016-2852 NEW
 STA. 238+73.54
 COOK COUNTY, SECTION (1516.1, 1717, & 1818) R-4
 TEMPORARY SOIL RETENTION SYSTEM
 NORTH ABUTMENT I
 DATE: 03/07/06
 DRAWN BY: TCU
 CHECKED BY: VCP

TENG
 TENG & ASSOCIATES, INC.
 ENGINEERS ARCHITECTS PLANNERS
 305 N. MICHIGAN AVE., CHICAGO, IL 60601
 TELEPHONE: 312.421.5000

\\F5-000\PROJ\CVL\DOCUMENT\93086\CONSTRUCT\CGA\SP007\BCJ.DGN
 \\F5-000\PROJ\CVL\DOCUMENT\93086\CONSTRUCT\CGA\SP007\BCJ.DGN
 3-01-2006 15:59:08