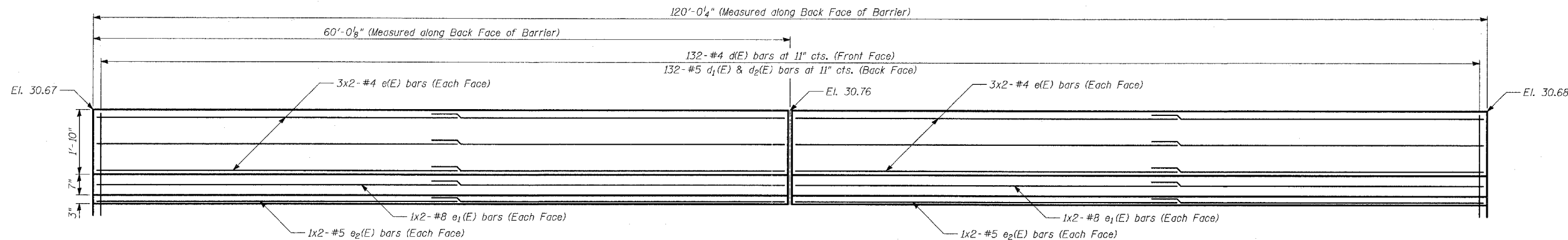


F.A.I. RTE.	SECTION	COUNTY	TOTAL SHEETS	SHEET NO.
94		COOK	916	635
STA. 190+65 (NB I-57) TO STA. 2316+00 (NB RYAN)				
FED. ROAD DIST. NO. ILLINOIS FED. AID PROJECT				
• (1516.1, 1717, & 1818) R-4 62304				

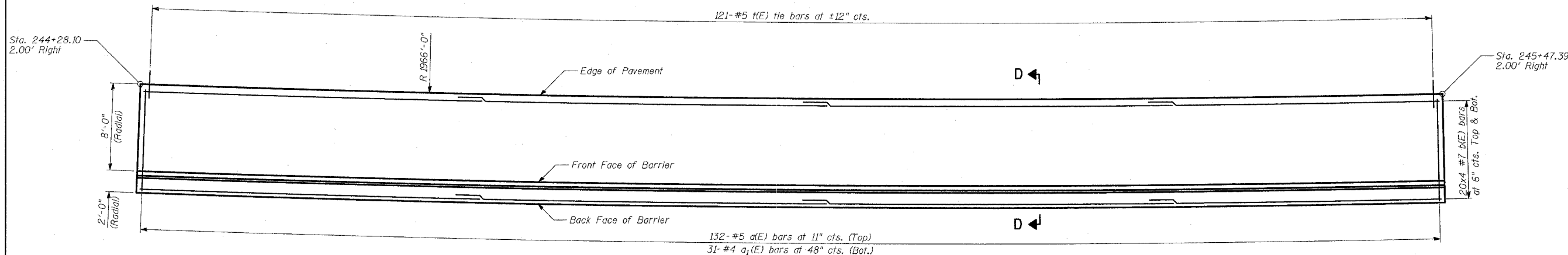
BILL OF MATERIAL

Bar	No.	Size	Length	Shape
a(E)	132	#5	11'-4"	┌
a ₁ (E)	31	#4	9'-8"	┌
b(E)	160	#7	32'-6"	┌
b ₁ (E)	8	#5	31'-7"	┌
d(E)	132	#4	8'-8"	└
d ₁ (E)	132	#5	5'-4"	└
d ₂ (E)	132	#5	4'-4"	└
e(E)	24	#4	30'-8"	┌
e ₁ (E)	8	#8	32'-1"	┌
e ₂ (E)	8	#5	30'-11"	┌
s(E)	121	#5	2'-4"	└
t(E)	121	#5	2'-6"	└
Reinforcement Bars, Epoxy Coated			POUND	16,800
Concrete Structures			CU YD	85
Protective Coat			SQ YD	241

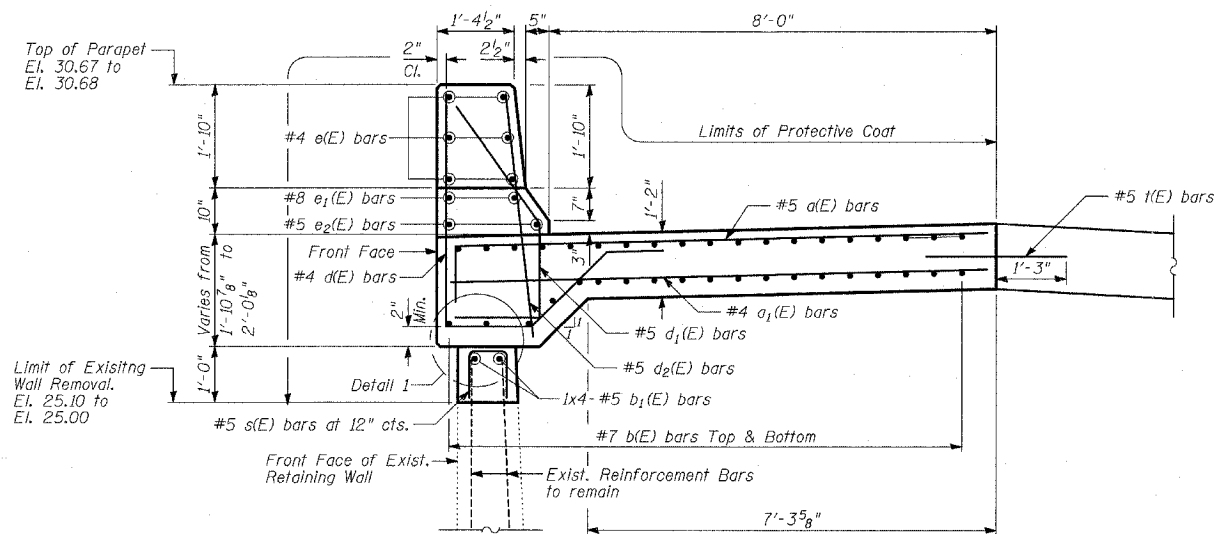
Reinforcement bars designated (E) shall be epoxy coated.



INSIDE ELEVATION OF PARAPET



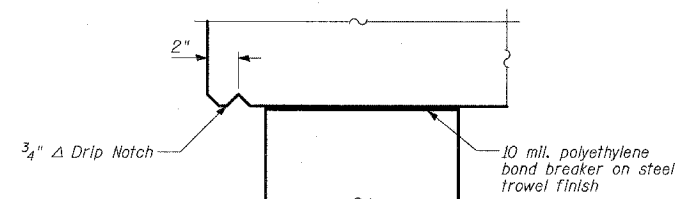
PLAN



SECTION D-D

LAP SPLICES

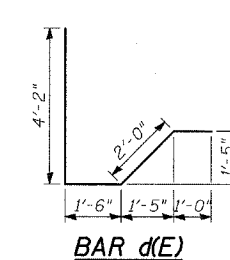
Bar	Lap
#4	1'-8"
#5	2'-2"
#7	3'-5"
#8	4'-6"



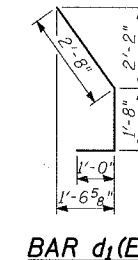
DETAIL 1

NOTES:

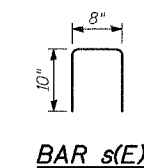
- Any reinforcement bars that are damaged during concrete removal operations of the retaining wall shall be repaired or replaced using approved bar splicer or anchorage system. Cost included with "Concrete Removal".
- Sand blast clean existing reinforcing bars to be incorporated into new construction. After cleaning, bars shall be evaluated to determine if additional reinforcing bars are required. Damaged or cut bars, or bars that have lost 25% or more of their original cross sectional area shall be supplemented by new in-kind reinforcement bars, to the approval of the Engineer. Cost included with "Concrete Removal".
- Bars indicated thus 3x2-#4 etc. indicates 3 lines of bars with 2 lengths per line.
- All exposed concrete edges shall be chamfered 3/4" except as noted.



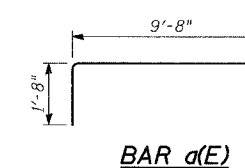
BAR d(E)



BAR d₁(E)



BAR s(E)



BAR a(E)

TYLIN INTERNATIONAL

REVISIONS	
NAME	DATE

ILLINOIS DEPARTMENT OF TRANSPORTATION
F.A.I. 94 (DAN RYAN EXPRESSWAY)

WALL C MODIFICATIONS
DETAILS AND BILL OF MATERIAL
STA. 244+28.10 TO STA. 245+47.39

S.N. DESIGNED BY: TD, DJR
SCALE: DRAWN BY: DJR
DATE: MARCH 7, 2006 CHECKED BY: MI