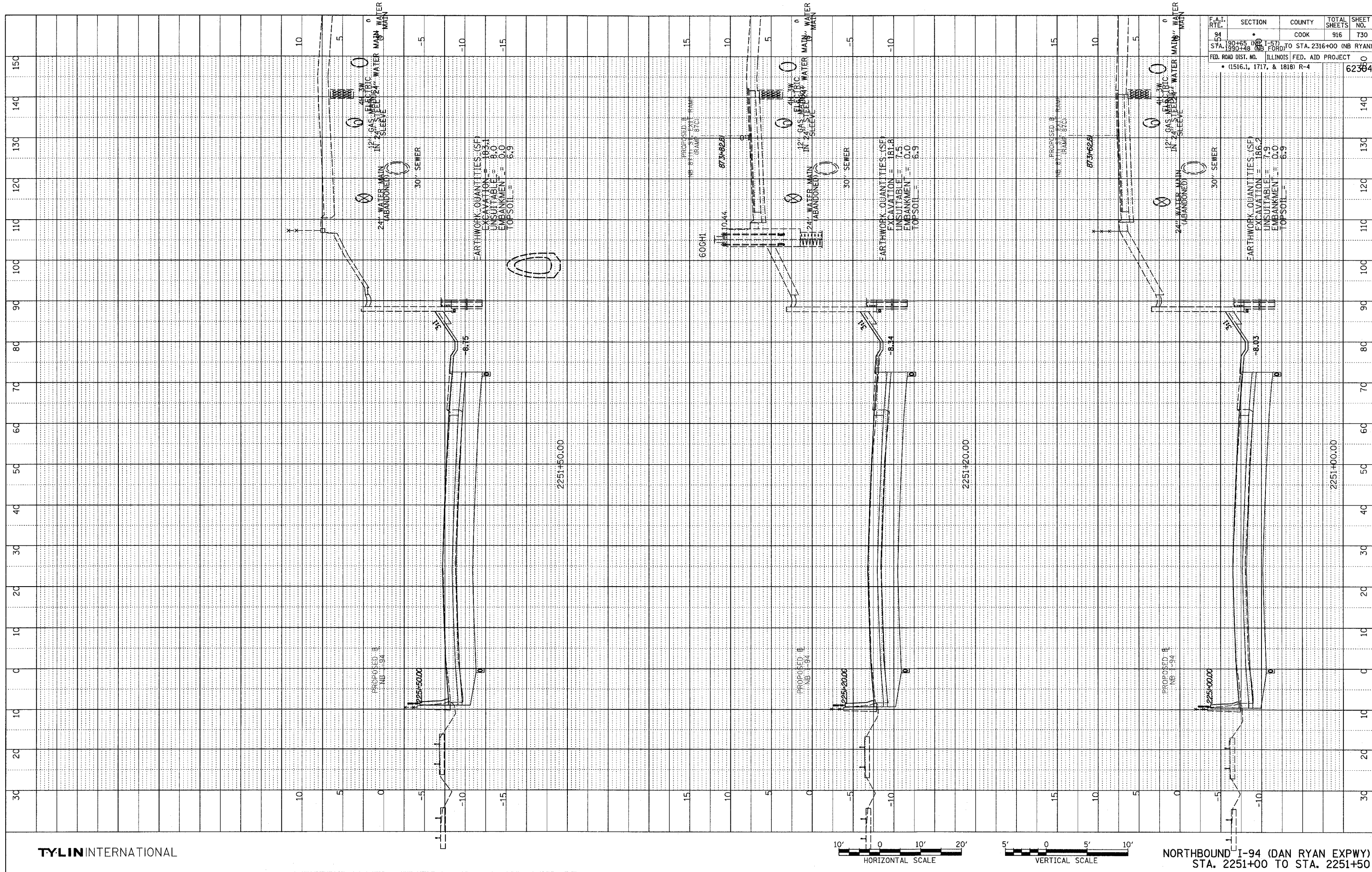
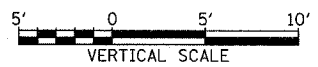


PROFILE	REVIEWED	DATE
NOTE BOOK	CHECKED	
NO.	B.M. NOTED	
	STRUCTURE NOTATIONS CHASD	



TYLIN INTERNATIONAL



NORTHBOUND I-94 (DAN RYAN EXPWY)  
STA. 2251+00 TO STA. 2251+50

F.A.I. RTE.	SECTION	COUNTY	TOTAL SHEETS	SHEET NO.
94	100	COOK	916	730
STA. 190+65 (NB I-57) TO STA. 2316+00 (NB RYAN)		ILLINOIS FED. AID PROJECT		
FED. ROAD DIST. NO. (1516.1, 1717, & 1818) R-4		62384		