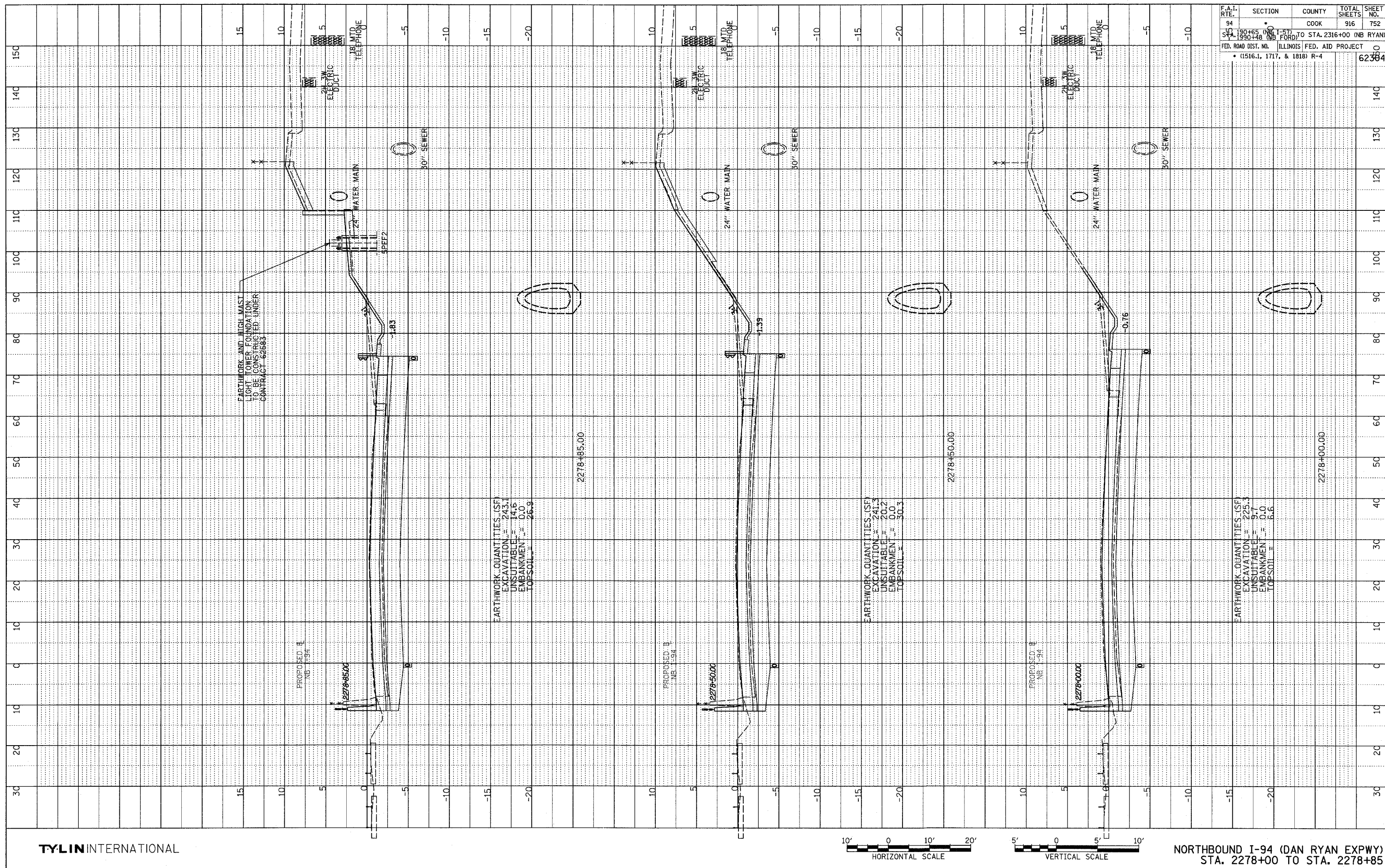
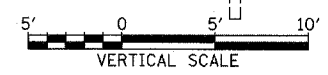
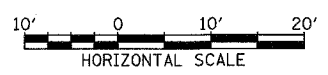


DATE	
BT	
PROFILE	SUBMITTED
NOTE BOOK	GRADES CHECKED
NO.	DATE NOTED
	BY SIGNATURE
	NOTATION
	CHRYD



TYLIN INTERNATIONAL



NORTHBOUND I-94 (DAN RYAN EXPWY)
STA. 2278+00 TO STA. 2278+85

F.A.I. RTE.	SECTION	COUNTY	TOTAL SHEETS	SHEET NO.
94	190+65 (NB I-94) TO STA. 2316+00 (NB RYAN)	COOK	916	752
ILLINOIS FED. AID PROJECT				
• (1516.1, 1717, & 1818) R-4				
				62384

03/03/2006 04:46:35 PM