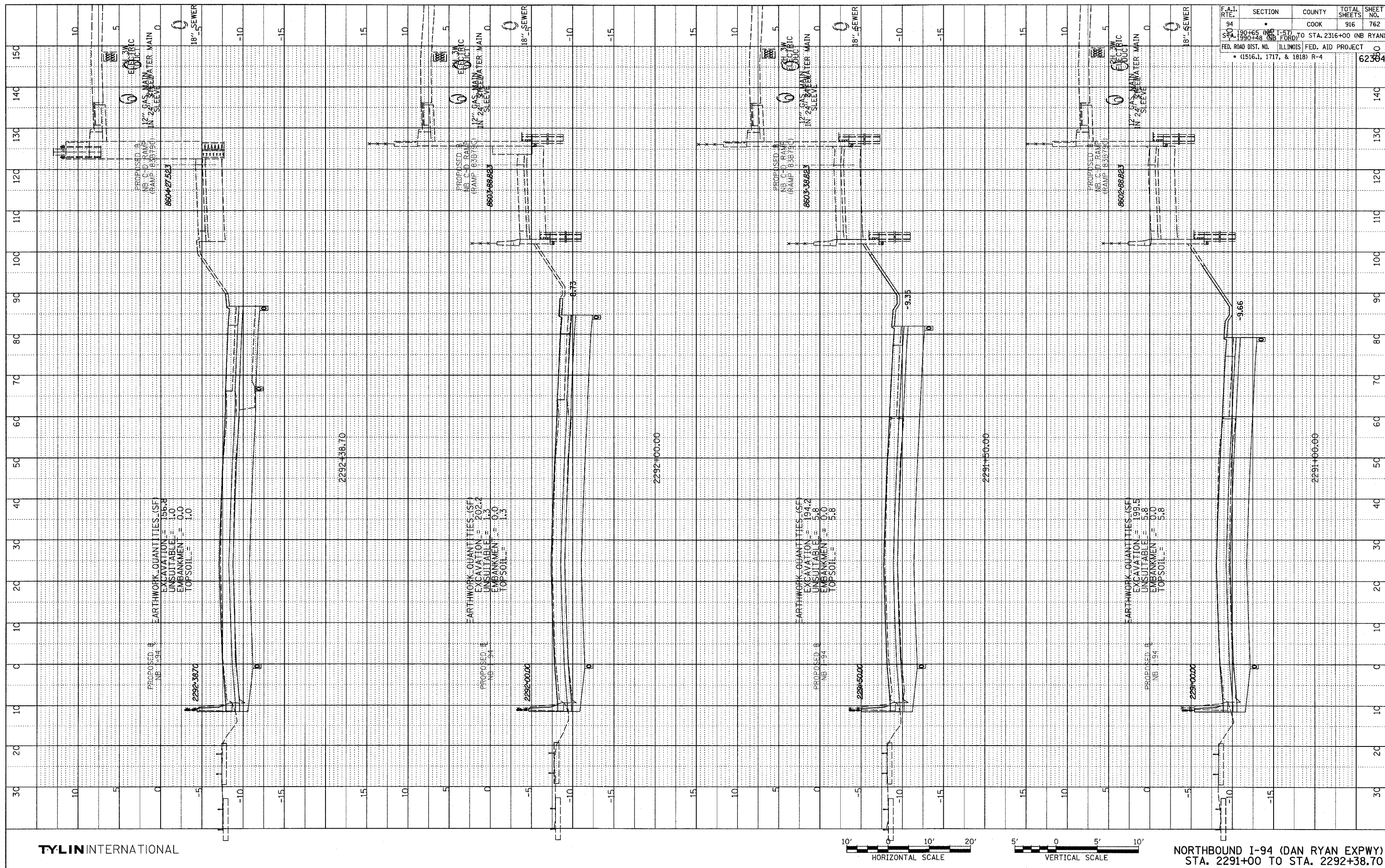
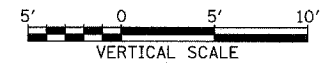


DATE	BY

PROFILE SURVEYED  
GRADES CHECKED  
NOTE BOOK NO. AND SHEET NO.  
DATE OF SURVEY



TYLIN INTERNATIONAL



NORTHBOUND I-94 (DAN RYAN EXPWY)  
STA. 2291+00 TO STA. 2292+38.70

F.A.I. RTE.	SECTION	COUNTY	TOTAL SHEETS	SHEET NO.
94	190+65 (NB I-57) TO STA. 2316+00 (NB RYAN)	COOK	916	762
STA. 1990+38 (NB I-57)	ILLINOIS FED. AID PROJECT			
FED. ROAD DIST. NO. (1516.1, 1717, & 1818) R-4				62394

03/03/2005 04:48:48 PM