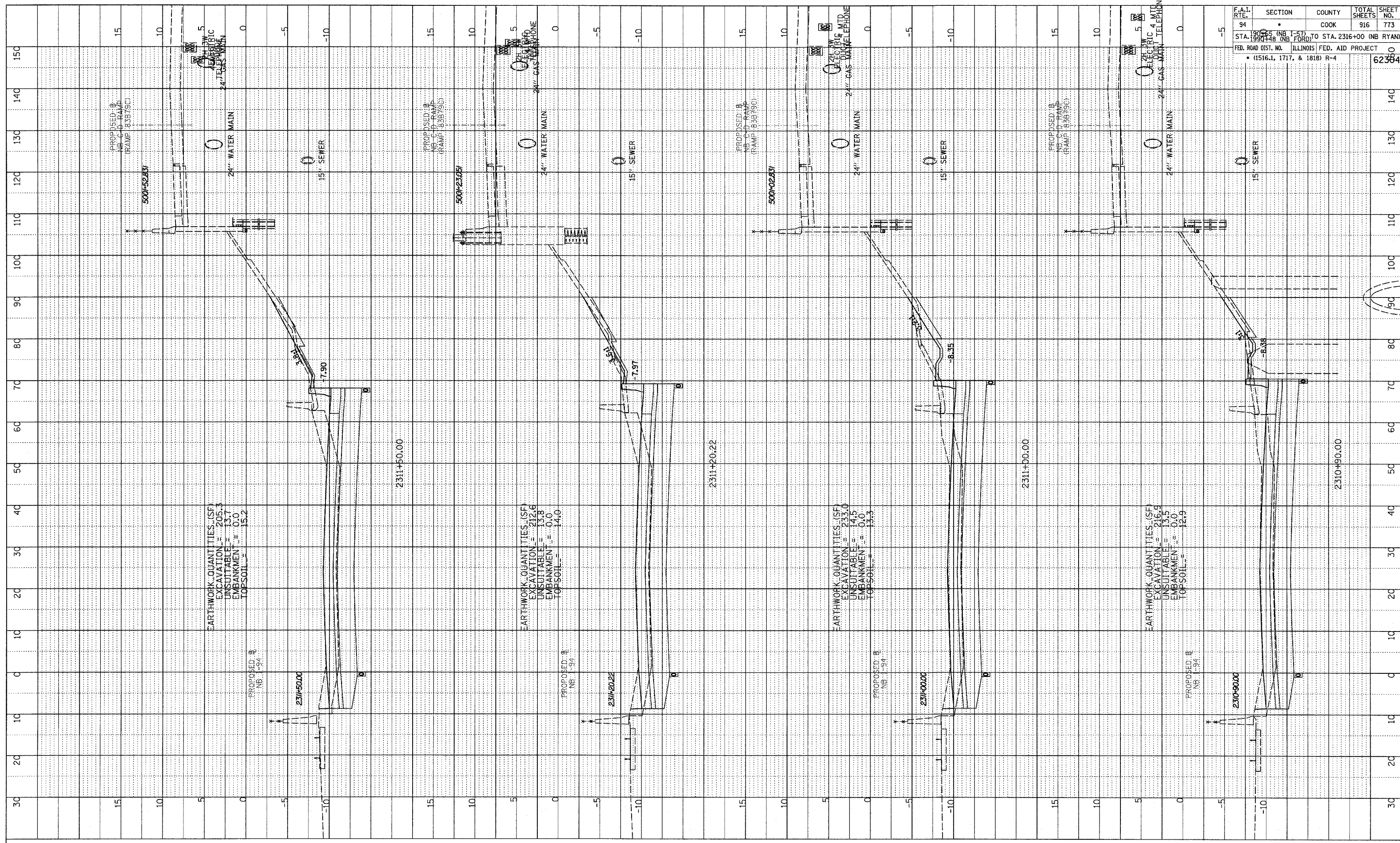
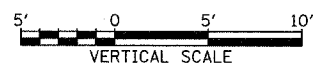
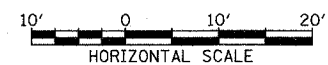


PROFILE SUBMITTED BY: _____ DATE: _____
 PLOTTED BY: _____
 NOTE BOOK GRADES CHECKED: _____
 NO. STRUCTURE NOTATIONS CHRD: _____



F.A.I. RTE.	SECTION	COUNTY	TOTAL SHEETS	SHEET NO.
94	190+00 (NB I-57) TO STA. 2316+00 (NB RYAN)	COOK	916	773
STA. 190+00 (NB I-57) TO STA. 2316+00 (NB RYAN) FED. ROAD DIST. NO. ILLINOIS FED. AID PROJECT • (1516.1, 1717, & 1818) R-4				
				62384

TYLIN INTERNATIONAL



NORTHBOUND I-94 (DAN RYAN EXPWY)
 STA. 2310+90 TO STA. 2311+50

03/03/2006 04:08:54 PM