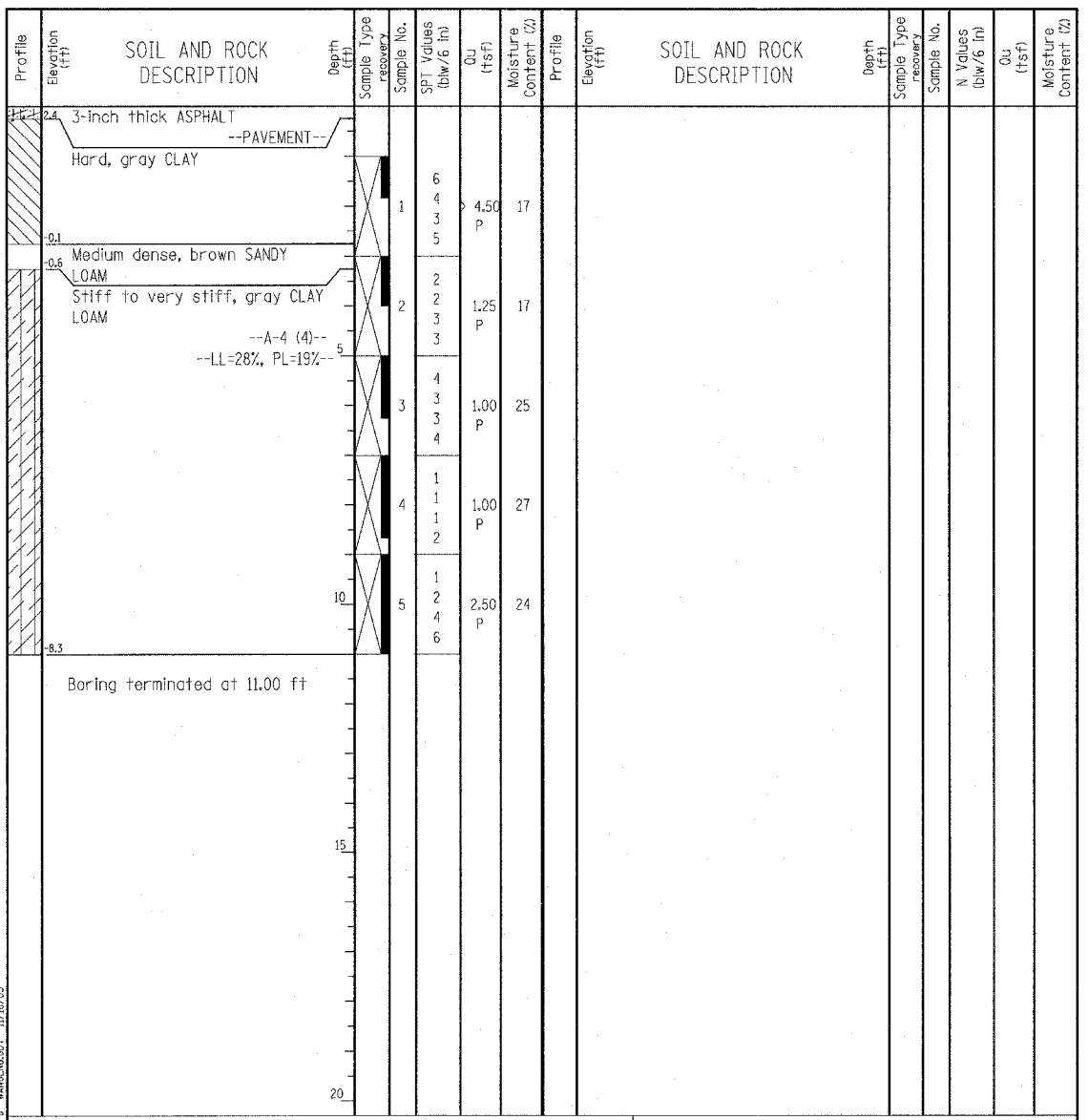


**Wang Engineering, Inc.**  
 Consulting Geotechnical and Environmental Engineers  
 wangeng3@wangeng.com  
 1145 Main Street  
 Lombard, IL 60148  
 Telephone: 630 953-9928  
 Fax: 630 953-9938

**BORING LOG P-027**  
 WEI Job No.: 414-07-01

Datum: CCD  
 Elevation: 2.68 ft  
 North: 1848226.12 ft  
 East: 1177700.46 ft  
 Station: 2268+59.85  
 Offset: 57.41' RT

Client: T. Y. LIN International, Inc.  
 Project: Dan Ryan Contracts 62304 (20) and 62593 (23)  
 Location: City of Chicago, Cook County, Illinois



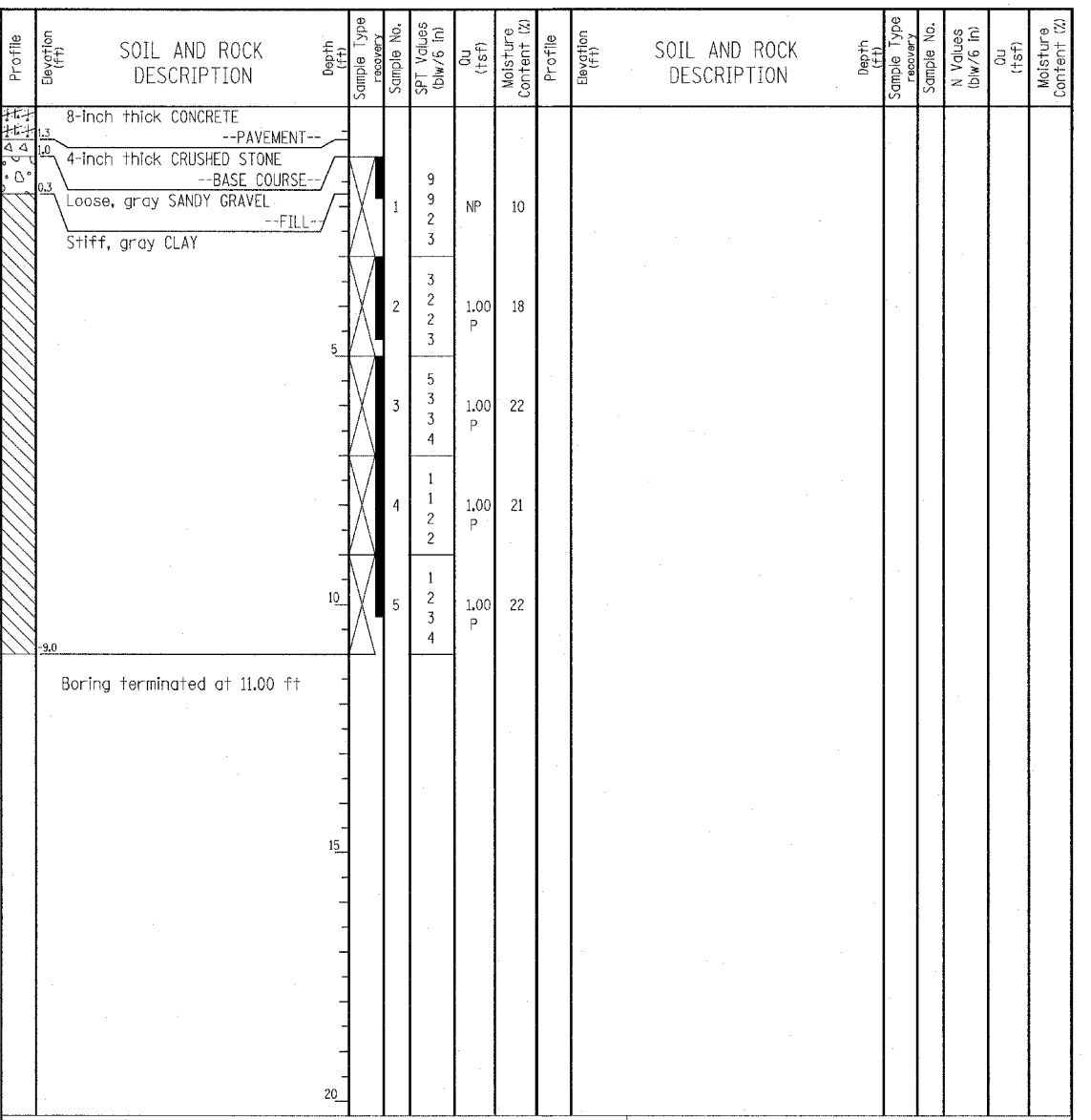
GENERAL NOTES				WATER LEVEL DATA			
Begin Drilling	07-18-2003	Complete Drilling	07-18-2003	While Drilling	∇	DRY	
Drilling Contractor	Patrick Drilling	Drill Rig	CME 75 TMR	At Completion of Drilling	∇	DRY	
Driller	K&B	Logger	Y. Shiu	Time After Drilling	NA		
Drilling Method	3.25" ID HSA; Boring backfilled with bentonite upon completion			Depth to Water	∇	NA	
				The stratification lines represent the approximate boundary between soil types; the actual transition may be gradual.			

**Wang Engineering, Inc.**  
 Consulting Geotechnical and Environmental Engineers  
 wangeng3@wangeng.com  
 1145 Main Street  
 Lombard, IL 60148  
 Telephone: 630 953-9928  
 Fax: 630 953-9938

**BORING LOG P-028**  
 WEI Job No.: 414-07-01

Datum: CCD  
 Elevation: 2.01 ft  
 North: 1848779.00 ft  
 East: 1177692.48 ft  
 Station: 2274+12.74  
 Offset: 65.27' RT

Client: T. Y. LIN International, Inc.  
 Project: Dan Ryan Contracts 62304 (20) and 62593 (23)  
 Location: City of Chicago, Cook County, Illinois



GENERAL NOTES				WATER LEVEL DATA			
Begin Drilling	07-18-2003	Complete Drilling	07-18-2003	While Drilling	∇	DRY	
Drilling Contractor	Patrick Drilling	Drill Rig	CME 75 TMR	At Completion of Drilling	∇	DRY	
Driller	K&B	Logger	Y. Shiu	Time After Drilling	NA		
Drilling Method	3.25" ID HSA; Boring backfilled with bentonite upon completion			Depth to Water	∇	NA	
				The stratification lines represent the approximate boundary between soil types; the actual transition may be gradual.			

**LEGEND**

NP NON-PLASTIC  
 B BULGE FAILURE  
 S SHEAR FAILURE  
 P POCKET PENETROMETER

**TYLIN INTERNATIONAL**

REVISIONS	
NAME	DATE

ILLINOIS DEPARTMENT OF TRANSPORTATION  
 F.A.I. 94 (DAN RYAN EXPRESSWAY)  
 SOIL BORINGS P-027 & P-028

SCALE: N.T.S.      DRAWN BY: RTM  
 DATE: MARCH 7, 2006      CHECKED BY: MPG