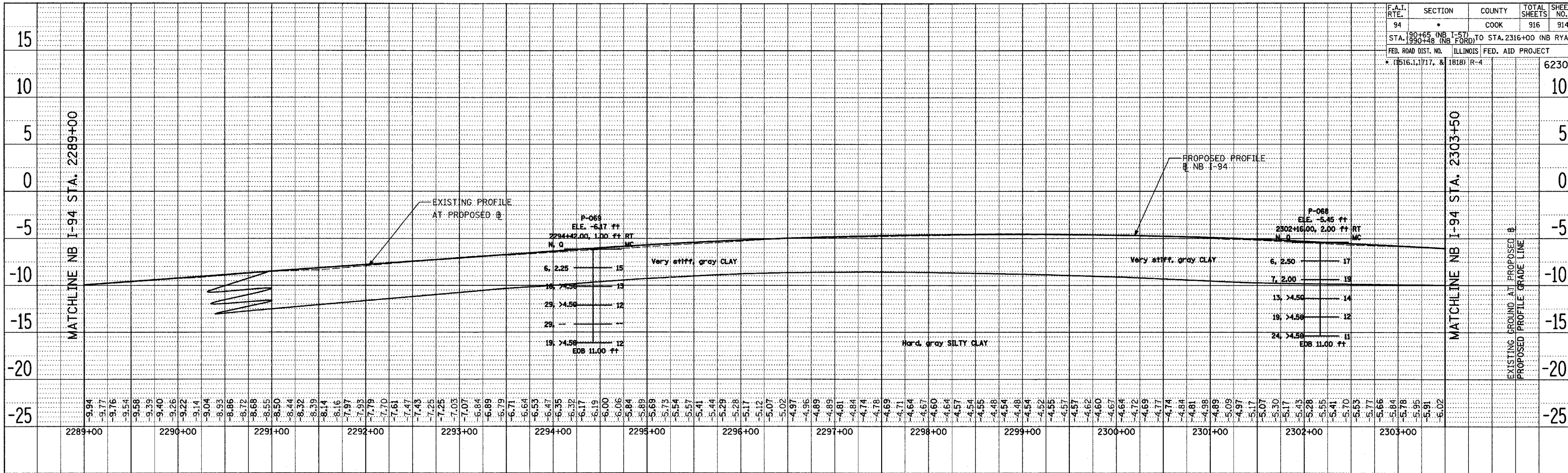


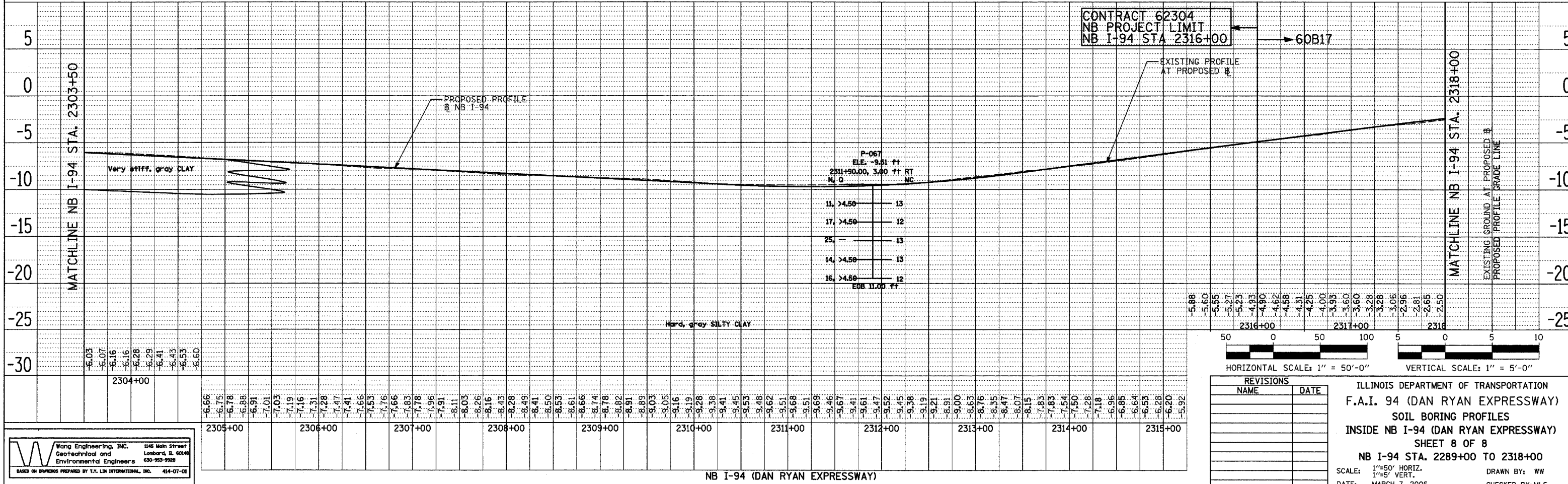
F.A.I. RTE.	SECTION	COUNTY	TOTAL SHEETS	SHEET NO.
94	*	COOK	916	914
STA. 190+65 (NB I-57) TO STA. 2316+00 (NB RYAN)				
STA. 1990+48 (NB FORD)				
FED. ROAD DIST. NO.	ILLINOIS	FED. AID PROJECT		
* (1516.1, 1717, & 1818)	R-4		62304	

PLAN	SURVEYED	DATE
NOTE BOOK	ALIGNED	
NO.	CHECKED	
	CADD FILE NAME	



NB I-94 (DAN RYAN EXPRESSWAY)

PLAN	SURVEYED	DATE
NOTE BOOK	ALIGNED	
NO.	CHECKED	
	CADD FILE NAME	



NB I-94 (DAN RYAN EXPRESSWAY)

W Wang Engineering, Inc. 1145 Mich Street
 Geological and Environmental Engineers Lombard, IL 60148
 630-953-9528
 BASED ON DRAWINGS PREPARED BY T.Y. LIN INTERNATIONAL, INC. 414-07-01

ILLINOIS DEPARTMENT OF TRANSPORTATION
 F.A.I. 94 (DAN RYAN EXPRESSWAY)
 SOIL BORING PROFILES
 INSIDE NB I-94 (DAN RYAN EXPRESSWAY)
 SHEET 8 OF 8
 NB I-94 STA. 2289+00 TO 2318+00

SCALE: 1"=50' HORIZ. 1"=5' VERT. DRAWN BY: WW
 DATE: MARCH 7, 2006 CHECKED BY: MLS

REVISIONS	
NAME	DATE