

INDEX OF SHEETS

FOR INDEX OF SHEETS, SEE SHEET NO. 2

PROJECT LOCATED IN THE CITY OF CHICAGO

DAN RYAN EXPRESSWAY:	ADT (2010)	DESIGN SPEED	POSTED SPEED
SB I-94 (DAN RYAN)	140,500	60 MPH	55 MPH
SB I-94 (BISHOP FORD)	87,600	60 MPH	55 MPH
SB I-57	65,800	60 MPH	55 MPH
SB 79TH STREET C-D ENTRANCE RAMP	15,300	45 MPH	40 MPH
SB 83RD STREET C-D EXIT RAMP	6,800	45 MPH	40 MPH
SB 87TH STREET EXIT RAMP	12,600	45 MPH	40 MPH
SB 87TH STREET ENTRANCE RAMP	13,400	45 MPH	40 MPH
SB 95TH STREET EXIT RAMP	11,900	45 MPH	40 MPH
SB WENTWORTH AVE. EXIT RAMP	4,800	45 MPH	40 MPH
SB HALSTED STREET EXIT RAMP	21,300	45 MPH	40 MPH
EB I-57 TO I-94 CROSS-CONNECTOR	22,800	50 MPH	50 MPH

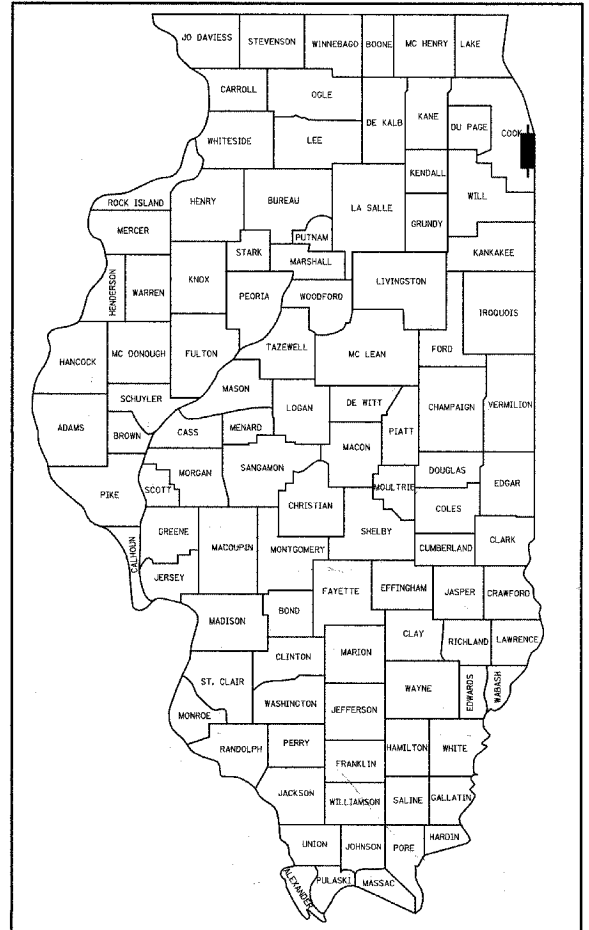
PROPOSED HIGHWAY PLANS

**F.A.I. ROUTE 94 (DAN RYAN EXPRESSWAY)
SECTION (1516.1, 1717, & 1818) R-5
PROJECT NO.: IM-094-3 (401) 061
I-57 TO 79TH STREET
SB LANES 1 - 5, SHOULDERS & CTA BARRIER WALL
COOK COUNTY
C-91-095-03**

VOL. 1 OF 2

F.A.I. RTE.	SECTION	COUNTY	TOTAL SHEETS	SHEET NO.
94	*	COOK	764	1
FED. ROAD DIST. NO. ILLINOIS FED. AID PROJECT			D-91-421-01 • (1516.1, 1717, & 1818) R-5	

62593



LOCATION OF SECTION INDICATED THUS: [Symbol]

PROJECT DESCRIPTION

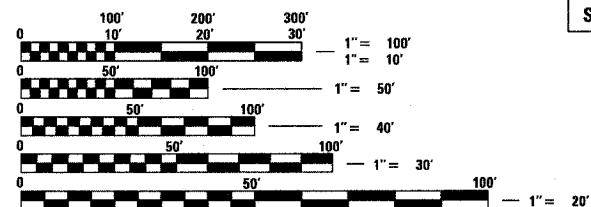
THE PROPOSED IMPROVEMENT CONSISTS OF PAVEMENT AND CTA BARRIER WALL RECONSTRUCTION, WIDENING, RAMP TERMINALS, SHOULDERS, AND DRAINAGE MODIFICATIONS ALONG SB I-94 (DAN RYAN & BISHOP FORD) AND SB I-57; AND PAVEMENT RESURFACING ALONG SB I-94 (BISHOP FORD) AND EB I-57 TO I-94 CONNECTOR.

INTERIOR WALL AND CEILING REPAIRS TO:

S.N. 016-0073: SOUTHBOUND BISHOP FORD TUNNEL AND ADJACENT CTA TUNNEL UNDER NORTHBOUND I-57.

SUBSTRUCTURE AND ABUTMENT REPAIRS TO:

S.N. 016-0143: BELT RAILWAY & NORFOLK SOUTHERN BRIDGE OVER SOUTHBOUND AND NORTHBOUND I-94 (DAN RYAN EXPRESSWAY).
S.N. 016-0144 & S.N. 016-0145: CHICAGO RAIL LINK BRIDGES OVER SOUTHBOUND AND NORTHBOUND I-94 (DAN RYAN EXPRESSWAY).

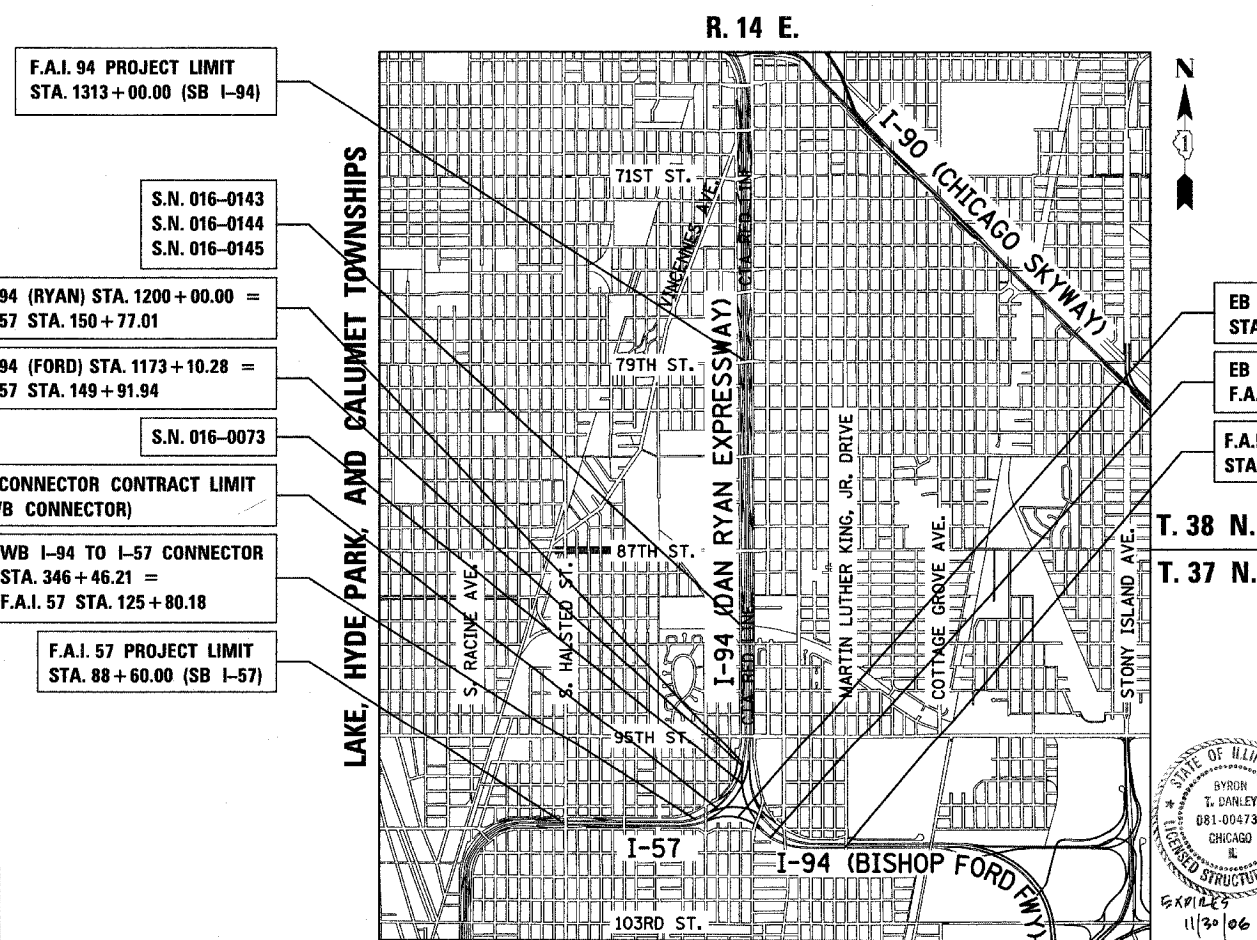


FULL SIZE PLANS HAVE BEEN PREPARED USING STANDARD ENGINEERING SCALES; REDUCED SIZED PLANS WILL NOT CONFORM TO STANDARD SCALES. IN MAKING MEASUREMENTS ON REDUCED PLANS, THE ABOVE SCALES MAY BE USED

DIGGER:
CHICAGO UTILITY ALERT NETWORK
(312) 744-7000

CTA CONTACT:
MARVIN A. WATSON,
GENERAL MANAGER, CONSTRUCTION
(312) 681-3860

CONTRACT NO. 62593



LOCATION MAP

GROSS LENGTH OF PROJECT = 24088.3 FT. = 4.562 MI.
NET LENGTH OF PROJECT = 24088.3 FT. = 4.562 MI.

EB I-57 TO I-94 CONNECTOR CONTRACT LIMIT STA. 415+06.00 (EB CONNECTOR)
EB I-57 TO I-94 CONNECTOR STA. 428+44.62 = F.A.I. 94 (FORD) STA. 1147+23.13
F.A.I. 94 PROJECT LIMIT STA. 1126+90.84 (SB I-94)

F.A.I. 94 PROJECT LIMIT STA. 1313+00.00 (SB I-94)
S.N. 016-0143
S.N. 016-0144
S.N. 016-0145
F.A.I. 94 (RYAN) STA. 1200+00.00 = F.A.I. 57 STA. 150+77.01
F.A.I. 94 (FORD) STA. 1173+10.28 = F.A.I. 57 STA. 149+91.94
S.N. 016-0073
WB I-94 TO I-57 CONNECTOR CONTRACT LIMIT STA. 340+29.15 (WB CONNECTOR)
WB I-94 TO I-57 CONNECTOR STA. 346+46.21 = F.A.I. 57 STA. 125+80.18
F.A.I. 57 PROJECT LIMIT STA. 88+60.00 (SB I-57)

DEAN A. KIESLING
32957 REGISTERED PROFESSIONAL ENGINEER OF ILLINOIS
Signed *Dean A. Kiesling*
Date *March 1, 2006*
Expires 11-30-2007.

BYRON T. DANLEY
081-004737 CHICAGO, ILLINOIS
Signed *Byron T. Danley*
Date *2/1/06*
For Drawings 508-518
Expires 11/30/06

PHILLIP D. FREY
081-004826 CHICAGO, ILLINOIS
Signed *Phillip D. Frey*
Date *3/1/06*
For Structural Drawings 342-347 AND 519-534
Expires 11-30-2006.

THOMAS MIKOLAJEWSKI
062-056151 LICENSED PROFESSIONAL ENGINEER OF ILLINOIS
Signed *Thomas Mikolajewski*
Date *March 1, 2006*
For Electrical Drawings 441-485
Expires 11-30-2007.

STATE OF ILLINOIS
DEPARTMENT OF TRANSPORTATION
DIVISION OF HIGHWAYS
SUBMITTED *March 2* 20 *06*
Diane M. O'Keefe
DISTRICT ENGINEER
March 24 20 *06*
Mike Kise
ENGINEER OF DESIGN AND ENVIRONMENT
March 24 20 *06*
Milton R. Seay, P.E.
DIRECTOR, DIVISION OF HIGHWAYS

CONTRACT 23

Rev. 5-10-06

TYLINTERNATIONAL
PRINTED BY THE AUTHORITY OF THE STATE OF ILLINOIS

DISTRICT ONE DESIGN / PROJECT MANAGER:
BRIAN KUTTAB (847) 705 - 4431