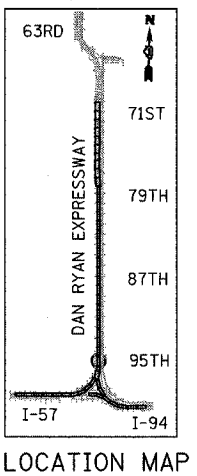
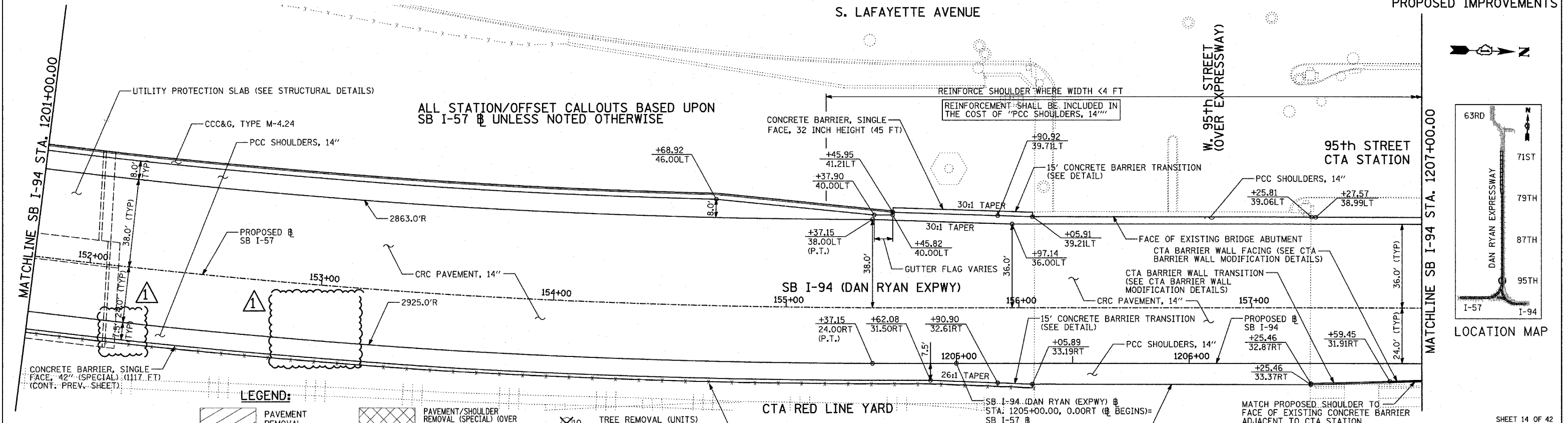
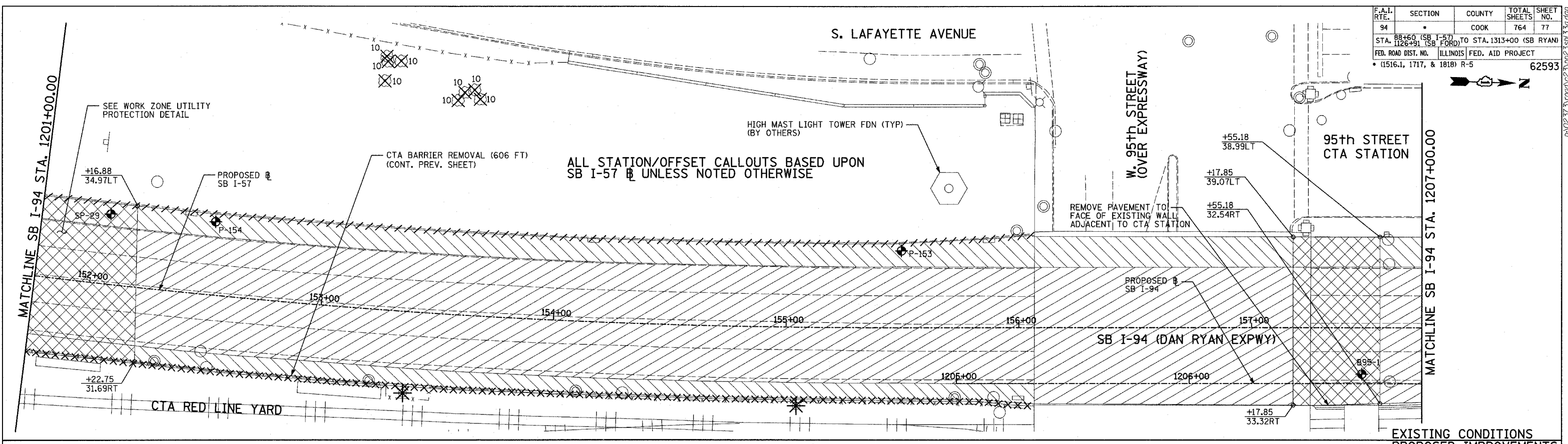


F.A.I. RTE.	SECTION	COUNTY	TOTAL SHEETS	SHEET NO.
94		COOK	764	77
STA. 88+60 (SB I-57) TO STA. 1313+00 (SB RYAN)				
FED. ROAD DIST. NO. ILLINOIS FED. AID PROJECT				
(1516.1, 1717, & 1818) R-5				
				62593



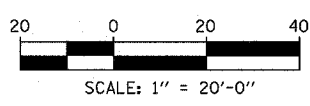
LEGEND:

	PAVEMENT REMOVAL		PAVEMENT/SHOULDER REMOVAL (SPECIAL) (OVER EXISTING UTILITIES)
	PAVED SHOULDER REMOVAL		COMB CONC CURB & GUTTER REMOVAL
	BITUMINOUS SURFACE REMOVAL, 4"		CHAIN LINK FENCE REMOVAL
	BITUMINOUS SURFACE REMOVAL, 1 1/2"		CONCRETE BARRIER/GUARDRAIL REMOVAL
	BITUMINOUS SURFACE REMOVAL, 1 3/4"		SOIL BORING LOCATIONS
			LIGHT POLE FOUNDATION REMOVAL (SEE ROADWAY LIGHTING & SURVEILLANCE PLANS)

PLAN NOTES:

- ALL STATION/OFFSET/RADIUS CALLOUTS MEASURED TO EDGE OF PAVEMENT UNLESS OTHERWISE NOTED.
- EXACT LOCATIONS OF EXISTING PIERS/ABUTMENTS TO BE FIELD VERIFIED

CTA FENCE (SPECIAL) (1133 FT) (CONT. PREV. SHEET)



REVISIONS

NAME	DATE
ADDENDUM 1	05/08/06

ILLINOIS DEPARTMENT OF TRANSPORTATION
F.A.I. 94 (DAN RYAN EXPRESSWAY)
EXISTING AND PROPOSED PLAN
SB I-94 (DAN RYAN EXPRESSWAY)
SB I-94 STA. 1201+00.00 TO 1207+00.00

SCALE: 1"=20'
 DATE: MARCH 1, 2006
 DRAWN BY: MPG
 CHECKED BY: RTM

TYLIN INTERNATIONAL