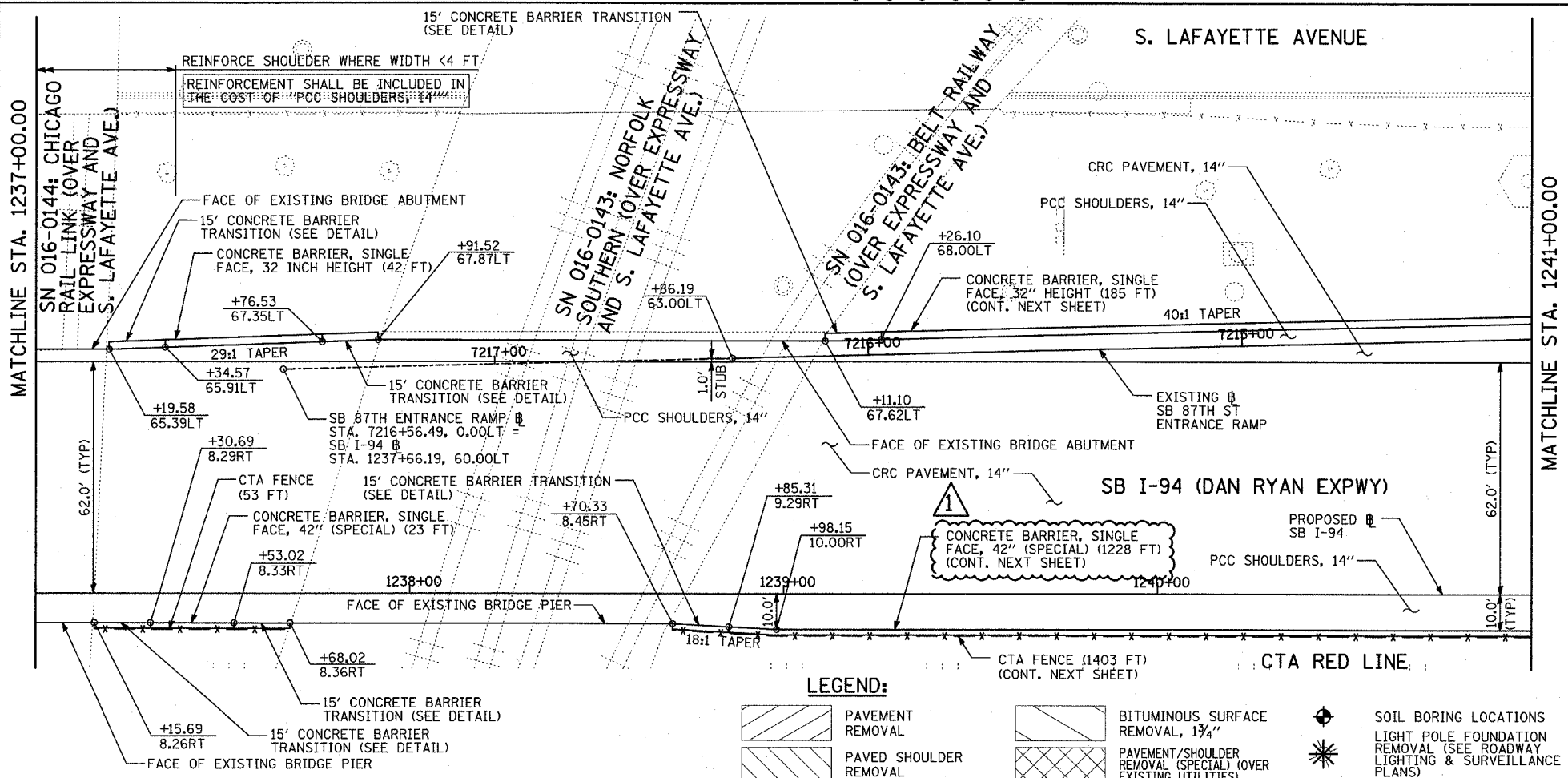
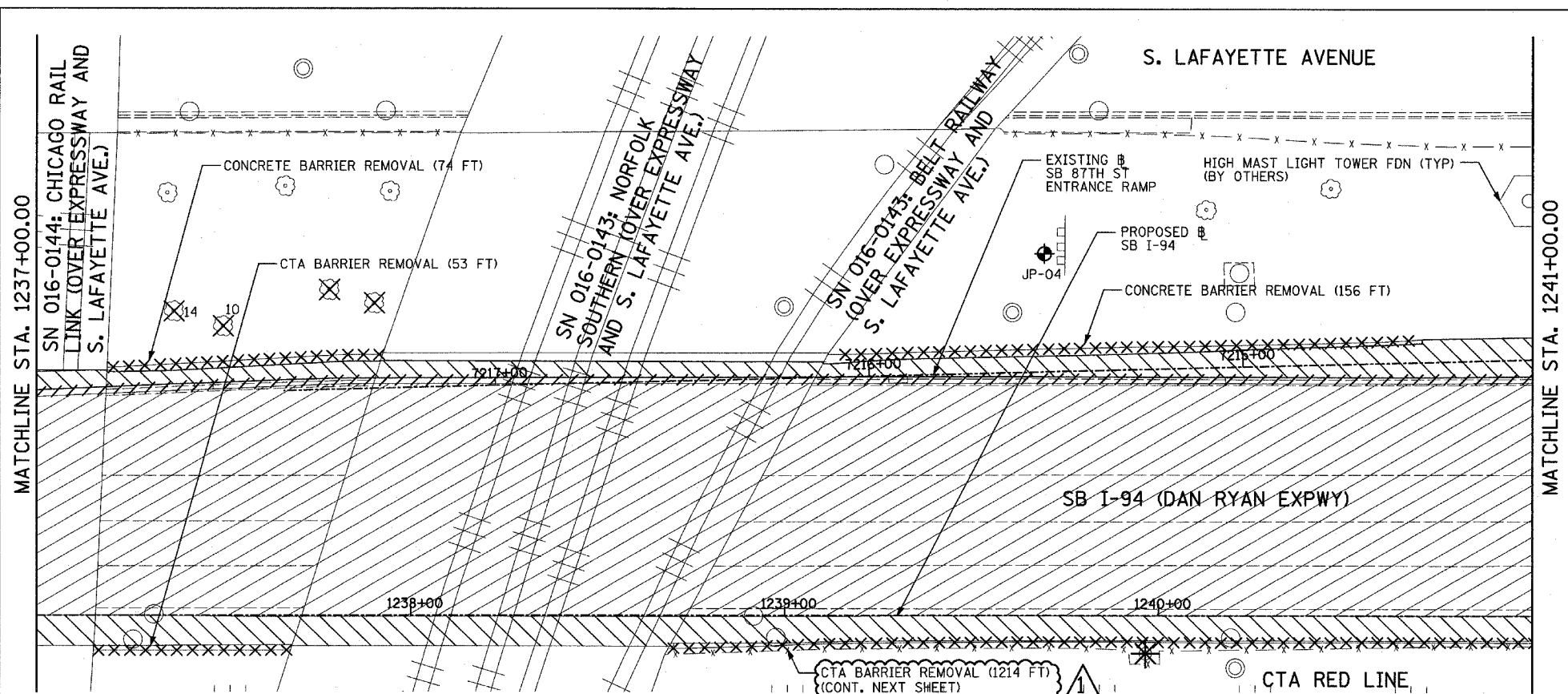
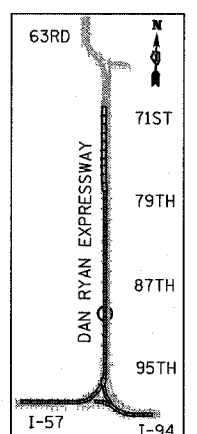


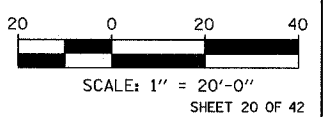
F.A.I. RTE.	SECTION	COUNTY	TOTAL SHEETS	SHEET NO.
94		COOK	764	83
STA. 88+60 (SB I-57) TO STA. 126+91 (SB FORD) TO STA. 1313+00 (SB RYAN)				
FED. ROAD DIST. NO. ILLINOIS FED. AID PROJECT				
• (1516.1, 1717, & 1818) R-5 62593				



EXISTING CONDITIONS
PROPOSED IMPROVEMENTS



LOCATION MAP



LEGEND:

	PAVEMENT REMOVAL		BITUMINOUS SURFACE REMOVAL, 1 1/4"		SOIL BORING LOCATIONS
	PAVED SHOULDER REMOVAL		PAVEMENT/SHOULDER REMOVAL (SPECIAL) (OVER EXISTING UTILITIES)		LIGHT POLE FOUNDATION REMOVAL (SEE ROADWAY LIGHTING & SURVEILLANCE PLANS)
	BITUMINOUS SURFACE REMOVAL, 4"		COMB CONC CURB & GUTTER REMOVAL		TREE REMOVAL (UNITS) (NO UNIT SHOWN = <6)
	BITUMINOUS SURFACE REMOVAL, 1 1/2"		CHAIN LINK FENCE REMOVAL		MAINLINE STATION/OFFSET
	CONCRETE BARRIER/GUARDRAIL REMOVAL				

PLAN NOTES:

- ALL STATION/OFFSET/RADIUS CALLOUTS MEASURED TO EDGE OF PAVEMENT UNLESS OTHERWISE NOTED.
- EXACT LOCATIONS OF EXISTING PIERS/ABUTMENTS TO BE FIELD VERIFIED

REVISIONS	
NAME	DATE

ILLINOIS DEPARTMENT OF TRANSPORTATION
F.A.I. 94 (DAN RYAN EXPRESSWAY)
EXISTING AND PROPOSED PLAN
SB I-94 (DAN RYAN EXPRESSWAY)
SB I-94 STA. 1237+00.00 TO 1241+00.00

SCALE: 1"=20'
DATE: MARCH 1, 2006
DRAWN BY: MPG
CHECKED BY: RTM

TYLIN INTERNATIONAL

ADDENDUM 1 05/08/06

05/04/2006 01:24:22 PM