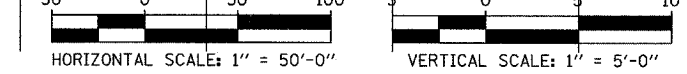
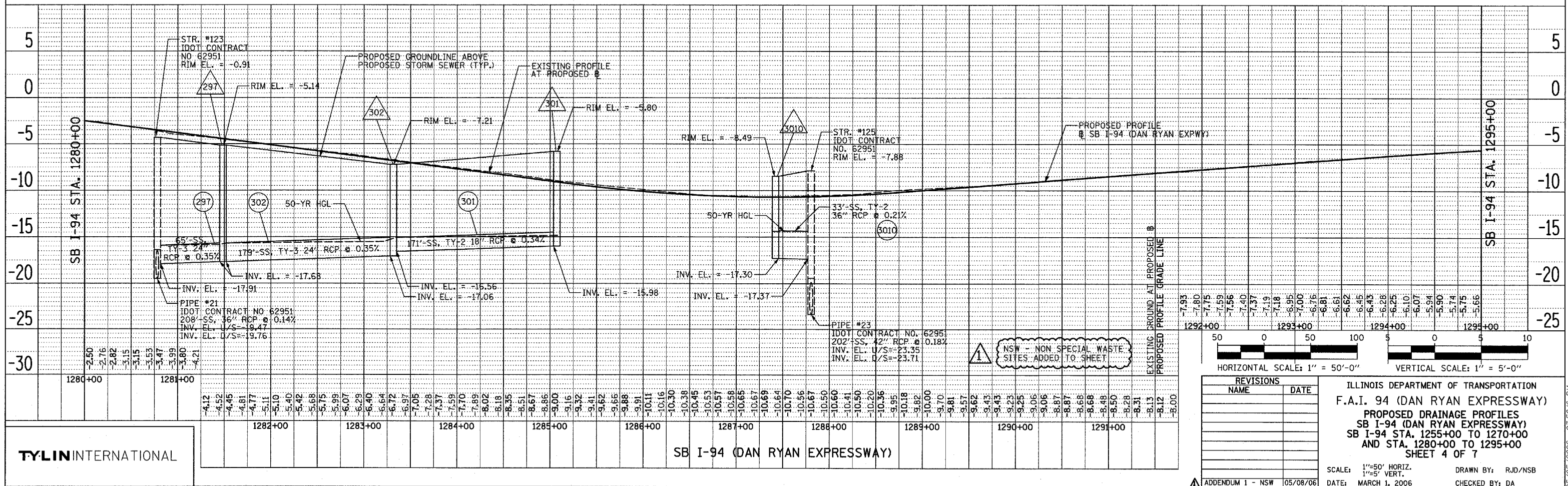
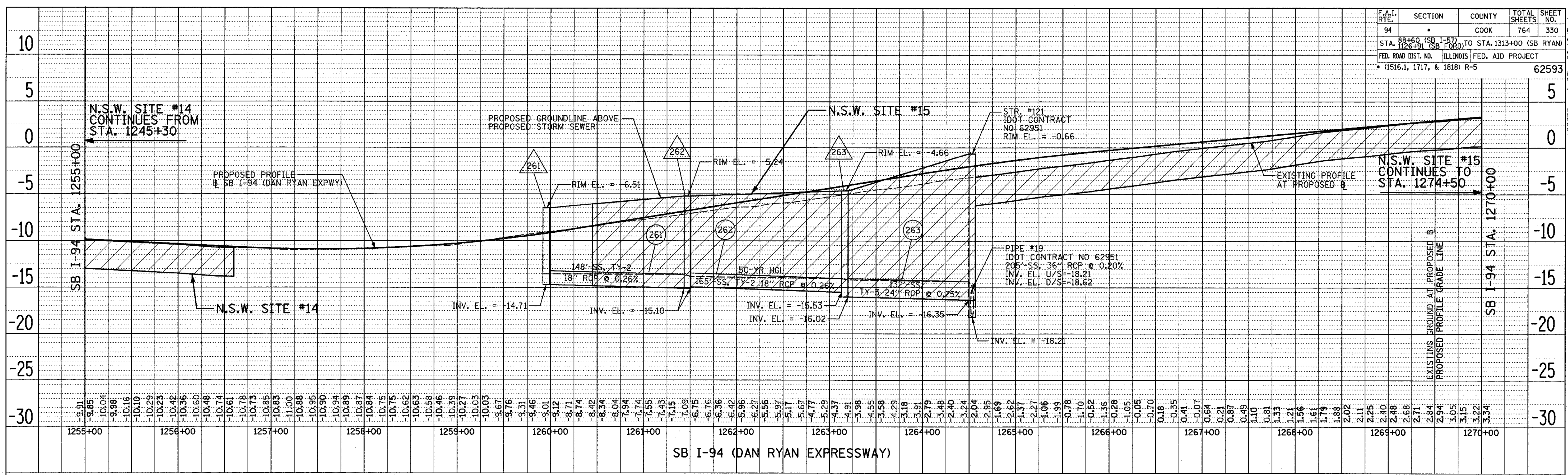


F.A.I. RTE.	SECTION	COUNTY	TOTAL SHEETS	SHEET NO.
94		COOK	764	330
STA. 125+00 (SB I-94) TO STA. 1270+00 (SB RYAN)				
FED. ROAD DIST. NO. ILLINOIS FED. AID PROJECT				
• (1516.1, 1717, & 1818) R-5				
				62593



REVISIONS	
NAME	DATE

ILLINOIS DEPARTMENT OF TRANSPORTATION  
 F.A.I. 94 (DAN RYAN EXPRESSWAY)  
 PROPOSED DRAINAGE PROFILES  
 SB I-94 (DAN RYAN EXPRESSWAY)  
 SB I-94 STA. 1255+00 TO 1270+00  
 AND STA. 1280+00 TO 1295+00  
 SHEET 4 OF 7

SCALE: 1"=50' HORIZ.  
 1"=5' VERT.  
 DATE: MARCH 1, 2006

DRAWN BY: RJD/NSB  
 CHECKED BY: DA

**TYLIN INTERNATIONAL**

DATE: \_\_\_\_\_  
 BY: \_\_\_\_\_  
 REVISIONS:  
 1. \_\_\_\_\_  
 2. \_\_\_\_\_  
 3. \_\_\_\_\_  
 4. \_\_\_\_\_  
 5. \_\_\_\_\_  
 6. \_\_\_\_\_  
 7. \_\_\_\_\_  
 8. \_\_\_\_\_  
 9. \_\_\_\_\_  
 10. \_\_\_\_\_

DATE: \_\_\_\_\_  
 BY: \_\_\_\_\_  
 REVISIONS:  
 1. \_\_\_\_\_  
 2. \_\_\_\_\_  
 3. \_\_\_\_\_  
 4. \_\_\_\_\_  
 5. \_\_\_\_\_  
 6. \_\_\_\_\_  
 7. \_\_\_\_\_  
 8. \_\_\_\_\_  
 9. \_\_\_\_\_  
 10. \_\_\_\_\_

05/05/2006 03:56:16 PM