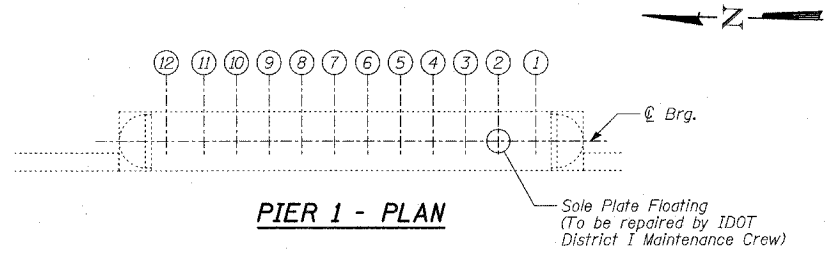
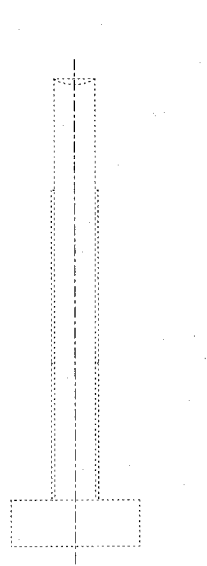


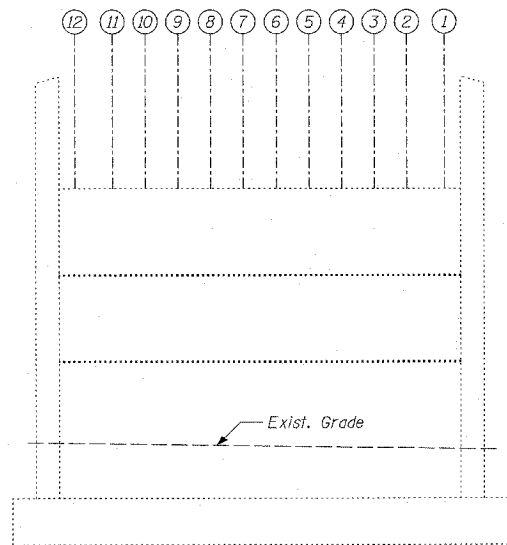
PIER 1 - ELEVATION
(Looking East)



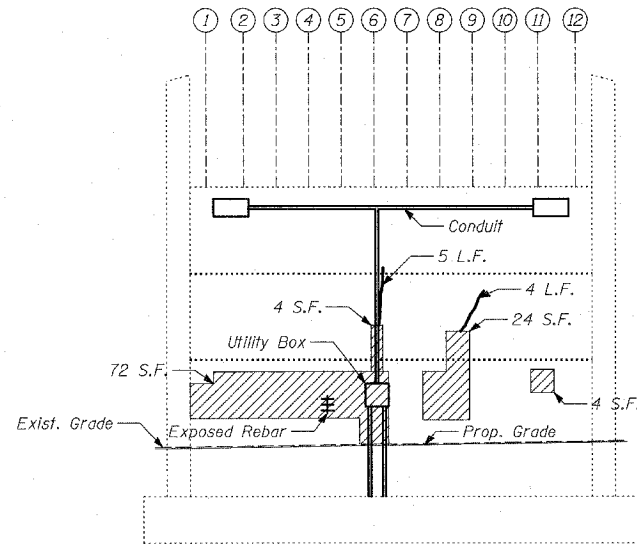
PIER 1 - PLAN



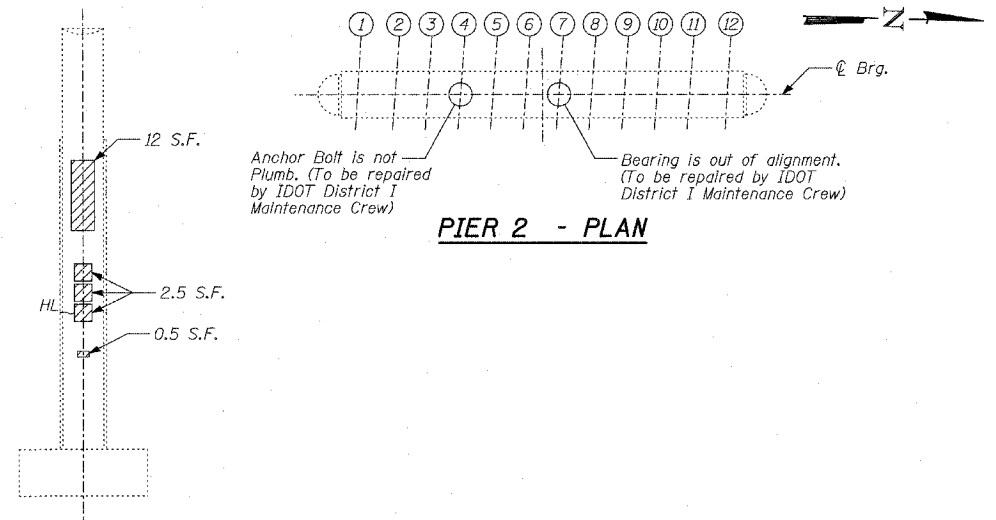
PIER 2 - END VIEW
(Looking North)



PIER 2 - ELEVATION
(Looking East)



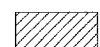

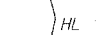
PIER 2 - ELEVATION
(Looking West)



PIER 2 - PLAN

PIER 2 - END VIEW
(Looking South)

LEGEND

-  Formed Concrete Repair (Depth < 5")
-  Epoxy Crack Sealing
-  Hair Line Crack

BILL OF MATERIAL

ITEM	UNIT	TOTAL
Epoxy Crack Sealing	FOOT	21
Formed Concrete Repair (Depth < 5")	SQ FT	141

NOTES:

- The Contractor shall temporarily relocate the existing lighting fixtures (conduits, wiring and junction box) interfering with the formed concrete repairs and reinstall them after completing the formed concrete repairs.
- The Contractor shall inform the Engineer 5 days in advance of relocating fixtures in the areas of formed concrete repairs. The cost of temporarily relocating and reinstalling the lighting fixtures and any associated labor and equipment shall be included in the cost of "Formed Concrete Repairs."

TYLIN INTERNATIONAL

REVISIONS	
NAME	DATE

ILLINOIS DEPARTMENT OF TRANSPORTATION
F.A.I. 94 (DAN RYAN EXPRESSWAY)
SUBSTRUCTURE REPAIR
FOR NORFOLK SOUTHERN
EXISTING PIER 1 & PIER 2

S.N. 016-0144 DESIGNED BY: MAF, DJR
SCALE: N.T.S. DRAWN BY: MAF, DJR
DATE: MARCH 1, 2006 CHECKED BY: MI