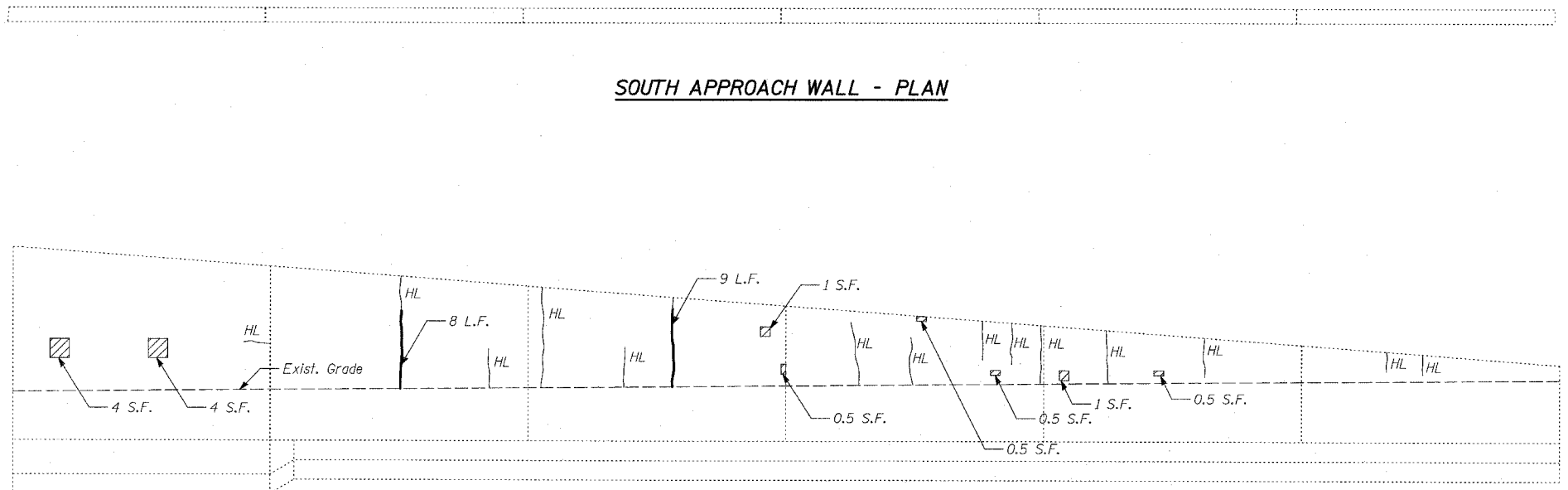
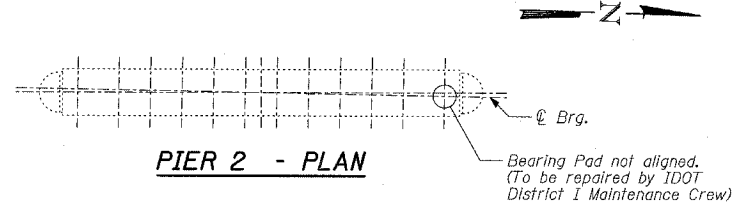
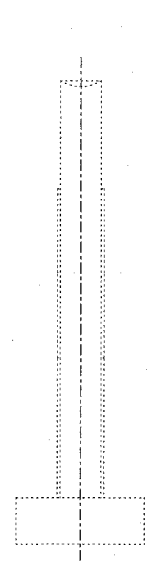
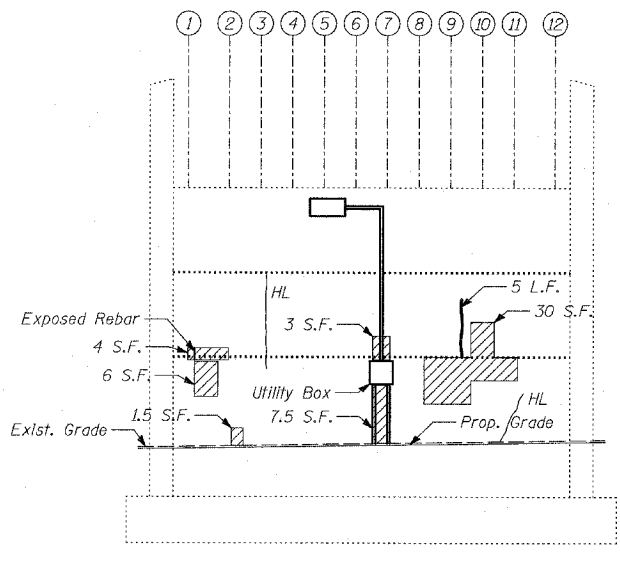
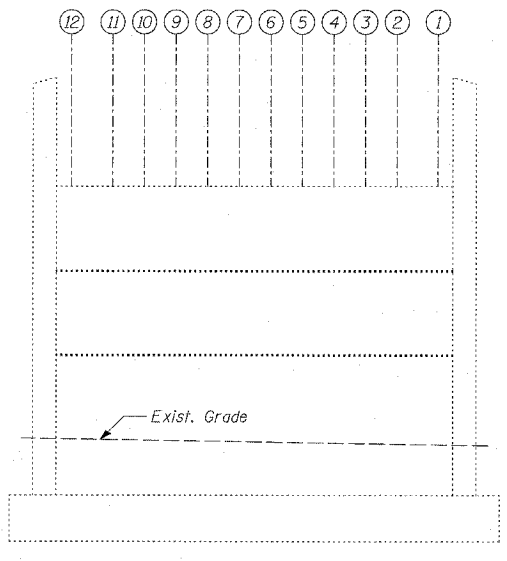
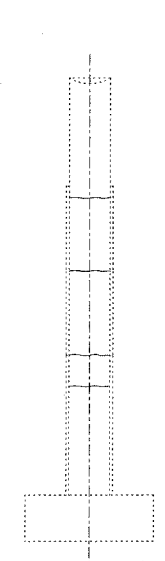


PIER 1 - ELEVATION
(Looking East)



SOUTH APPROACH WALL - ELEVATION
(Looking East)



PIER 2 - END VIEW
(Looking North)

PIER 2 - ELEVATION
(Looking East)

PIER 2 - ELEVATION
(Looking West)

PIER 2 - END VIEW
(Looking South)

LEGEND

Formed Concrete Repair (Depth = < 5")

Epoxy Crack Sealing

Hair Line Crack

BILL OF MATERIAL

ITEM	UNIT	TOTAL
Epoxy Crack Sealing	FOOT	51
Formed Concrete Repair (Depth = < 5")	SQ FT	80

- NOTES:**
- The Contractor shall temporarily relocate the existing lighting fixtures (conduits, wiring and junction box) interfering with the formed concrete repairs and reinstall them after completing the formed concrete repairs.
 - The Contractor shall inform the Engineer 5 days in advance of relocating fixtures in the areas of formed concrete repairs. The cost of temporarily relocating and reinstalling the lighting fixtures and any associated labor and equipment shall be included in the cost of "Formed Concrete Repairs."

REVISIONS

NAME	DATE

SHEET 7 OF 12

ILLINOIS DEPARTMENT OF TRANSPORTATION
F.A.I. 94 (DAN RYAN EXPRESSWAY)
SUBSTRUCTURE REPAIR
FOR CHICAGO RAIL LINK
EXISTING PIER 1 & PIER 2

S.N. 016-0145 DESIGNED BY: MAF, DJR
SCALE: N.T.S. DRAWN BY: MAF, DJR
DATE: MARCH 1, 2006 CHECKED BY: MI

TYLIN INTERNATIONAL