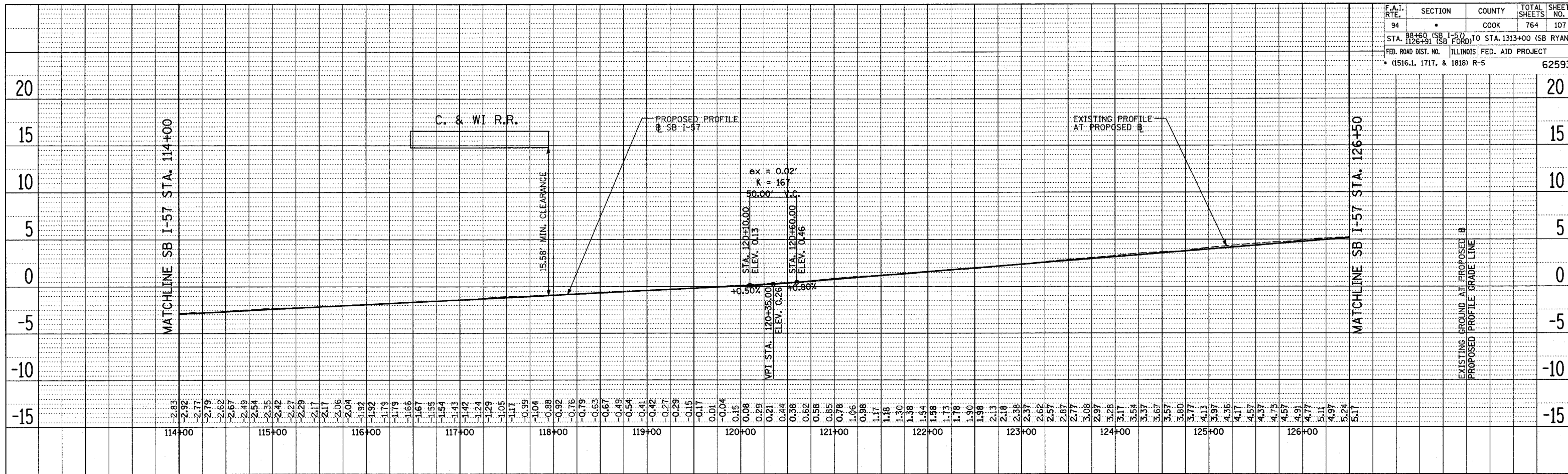
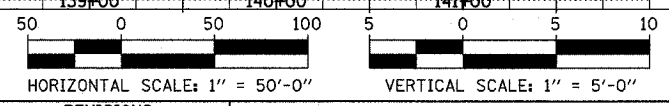
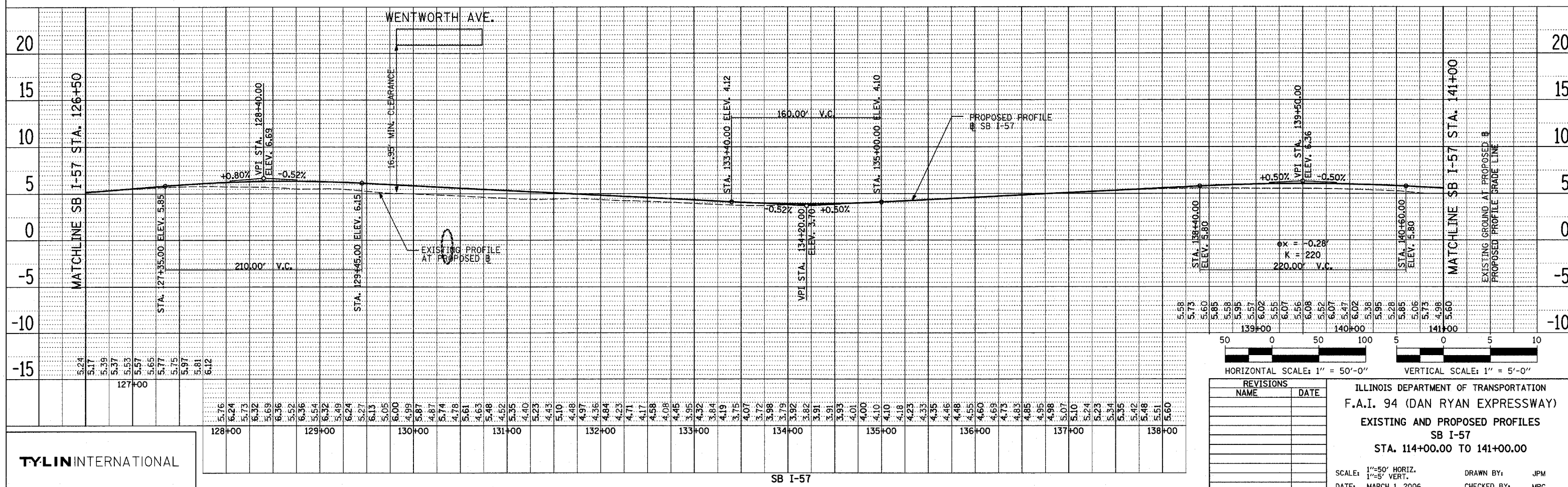


PLAN	REVISIONS	BY	DATE
NO.	NO.		
	NO.		
	NO.		
	NO.		



PLAN	REVISIONS	BY	DATE
NO.	NO.		
	NO.		
	NO.		
	NO.		



REVISIONS	
NAME	DATE

ILLINOIS DEPARTMENT OF TRANSPORTATION
 F.A.I. 94 (DAN RYAN EXPRESSWAY)
 EXISTING AND PROPOSED PROFILES
 SB I-57
 STA. 114+00.00 TO 141+00.00

SCALE: 1"=50' HORIZ.
 1"=5' VERT.

DATE: MARCH 1, 2006

DRAWN BY: JPM
 CHECKED BY: MPG

TYLIN INTERNATIONAL