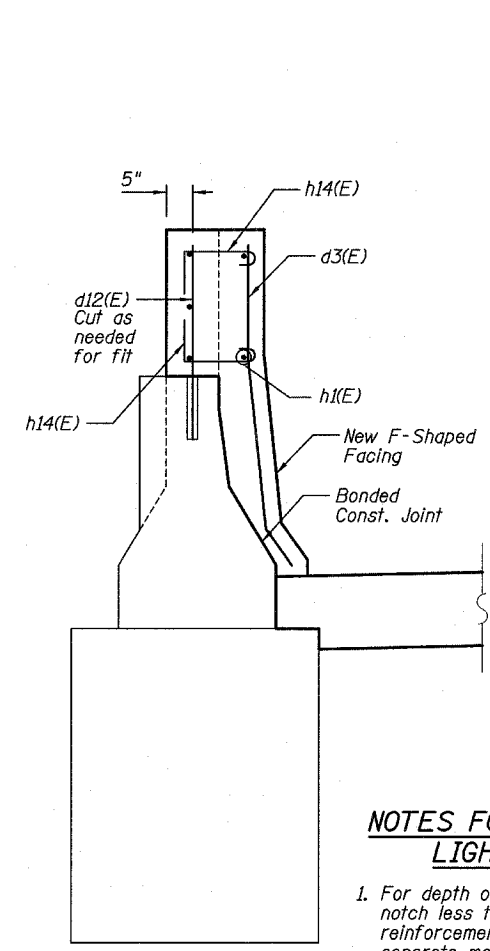


Note A:  
See Sheet B2, "Typical Section between Sub-piers"

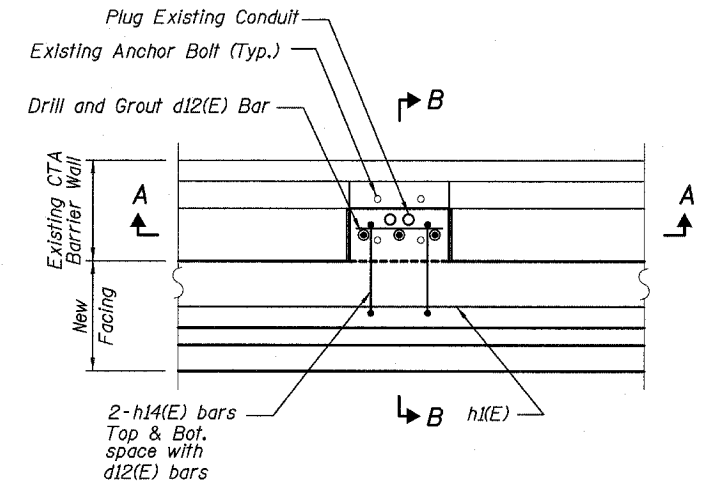
**TYPICAL PLAN**

**DETAIL A NOTES**

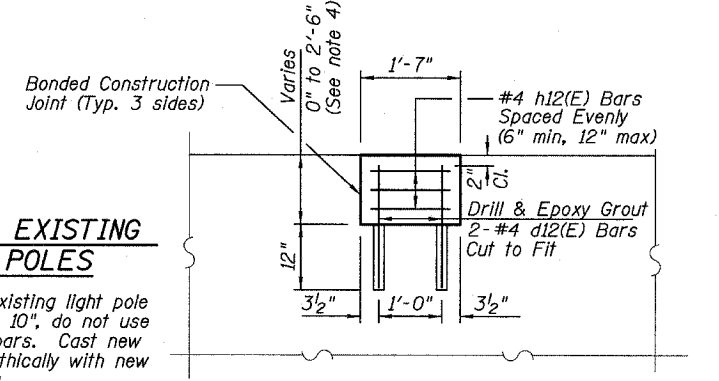
Soldier Piles are to be HP 12x53, 12' Long (288 required.) Fy min = 36,000 psi (M270 Grade 36)  
Pile locations can be adjusted to miss proposed drainage structures. Maximum pile spacing 8'-0".



**SECTION B-B**



**PLAN - DETAILS AT EXISTING LIGHT POLES**



**SECTION A-A**

**NOTES FOR EXISTING LIGHT POLES**

1. For depth of existing light pole notch less than 10", do not use reinforcement bars. Cast new concrete monolithically with new F-Shape facing.
2. Additional reinforcing details for light pole base details shown, for F-Shape Facing details and reinforcement, see Detail 2, Sht B2.



REVISIONS	
NAME	DATE

ILLINOIS DEPARTMENT OF TRANSPORTATION  
F.A.I. 94 (DAN RYAN EXPRESSWAY)  
CTA STATION BARRIER WALL MODIFICATIONS  
79TH, 87TH AND 95TH STREET STATIONS  
TYPICAL PLAN/SECTIONS

SCALE: NONE  
DATE: MARCH 1, 2006

DRAWN BY: SP  
CHECKED BY: PDF