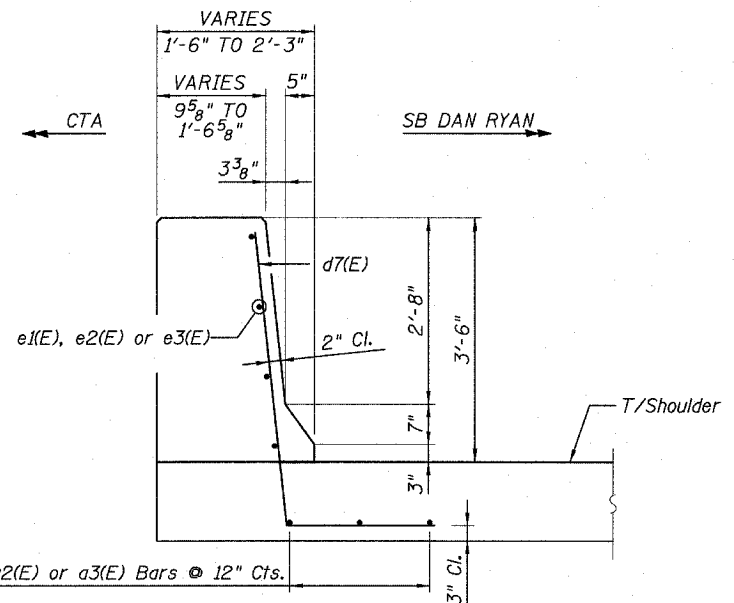


ELEVATION

ELEVATION



SECTION J-J

BILL OF MATERIAL

Bar	79th No.	87th No.	95th No.	Size	Length	Shape
a1(E)	3	-	-	#5	27'-3"	—
a2(E)	-	3	-	#5	19'-2"	—
a3(E)	-	-	3	#5	25'-6"	—
d7(E)	28	20	26	#6	6'-3"	┌┐
e1(E)	4	-	-	#6	27'-3"	—
e2(E)	-	4	-	#6	19'-2"	—
e3(E)	-	-	4	#6	25'-6"	—
Item Unit 79th Qty 87th Qty 95th Qty						
Reinforcement Bars, Epoxy Coated	Pound.	520	370	480		
* Concrete Structures	Cu. Yd.	5	4	5		
Protective Coat	Sq. Yd.	16	11	15		

NOTES:

1. Provide joints in facing to match those in the Existing Barrier. See Sht B1 for joint details.
2. For Refaced Barrier details, see Sheet B2.
3. For Concrete Barrier, Single Face, 42" (Special), see Typical Section details.
5. For locations of Transition, see Roadway Plans.

* Coarse Aggregate shall meet the requirements of Article 1004.01-1004.02 of the Standard Specifications except the gradation will be limited to CA-11 or CA-14.

REVISIONS		ILLINOIS DEPARTMENT OF TRANSPORTATION F.A.I. 94 (DAN RYAN EXPRESSWAY) CTA STATION BARRIER WALL MODIFICATIONS 79TH, 87TH AND 95TH STREET STATIONS REFACED BARRIER TO NEW 42 INCH BARRIER DETAILS: PLAN, ELEVATION & TYPICAL SECTION
NAME	DATE	
		SCALE: NONE
		DATE: MARCH 1, 2006
		DRAWN BY: MPG
		CHECKED BY: SP