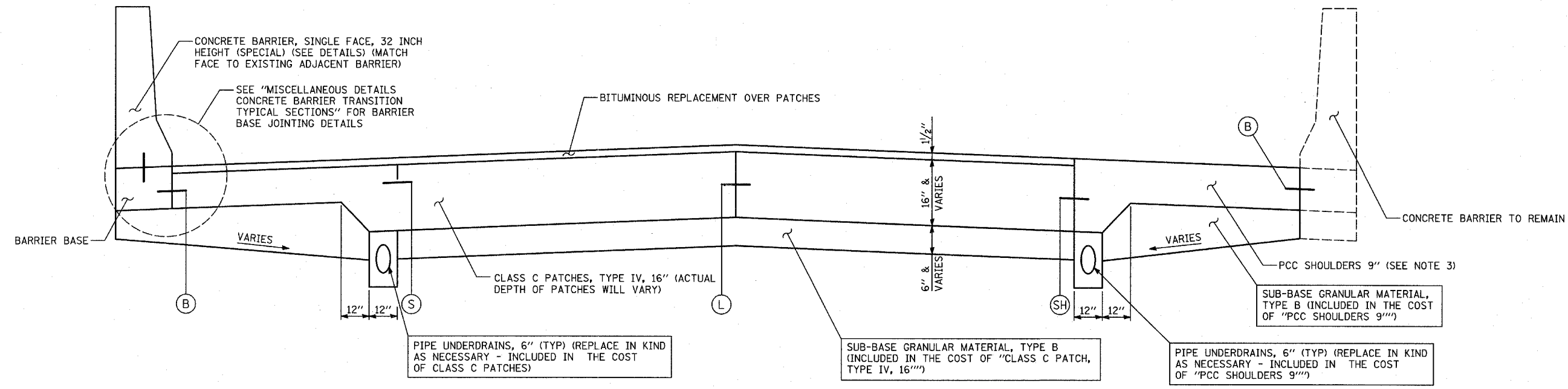


**TYPICAL PAVEMENT PATCH OVER STORM SEWER TRENCH: PLAN VIEW**  
 IN PAVEMENT RESURFACING AREAS - SEE PLANS FOR LOCATIONS



**SECTION A-A**

**NOTES:**

- TRENCH WIDTH MUST BE 5'-0" EITHER SIDE FROM SEWER OR DRAINAGE STRUCTURE CENTER LINE.
- LOCATIONS OF CONCRETE BARRIER TO REMAIN, CONCRETE BARRIER TO BE REPLACED, PCC SHOULDERS, AND BITUMINOUS SURFACED SHOULDERS VARY.
- ADDITIONAL THICKNESS OF "PCC SHOULDERS 9" NEEDED TO MATCH THE DEPTH OF CLASS C PATCHES SHALL BE INCLUDED IN THE COST OF PCC SHOULDERS 9".
- SEE PAVEMENT JOINTING AND ELEVATION PLANS LEGEND FOR DESCRIPTIONS OF LONGITUDINAL BARRIER CONSTRUCTION JOINTS, LONGITUDINAL CONSTRUCTION JOINTS, LONGITUDINAL SHOULDER CONSTRUCTION JOINTS, AND SAWED LONGITUDINAL JOINTS. ALL JOINTS SHALL BE INCLUDED IN THE COST OF "CLASS C PATCHES, TYPE IV, 16", OR PCC SHOULDERS, 9"
- CONNECT UNDERDRAIN TO CATCH BASIN IF UNDERDRAIN IS DRAINING TOWARD PATCH.

REVISIONS	
NAME	DATE

ILLINOIS DEPARTMENT OF TRANSPORTATION  
 F.A.I. 94 (DAN RYAN EXPRESSWAY)  
 MISCELLANEOUS DETAILS:  
 PAVEMENT PATCHING OVER SEWER  
 TRENCHES: SHEET 1 OF 2  
 PLAN AND ELEVATION

SCALE: NONE  
 DATE: MARCH 1, 2006  
 DRAWN BY: MPG  
 CHECKED BY: TGB