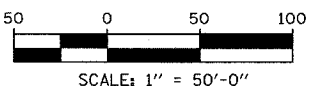
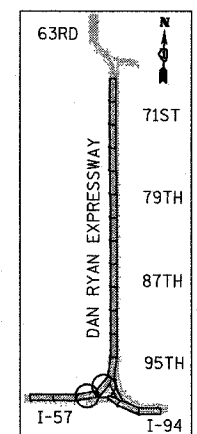
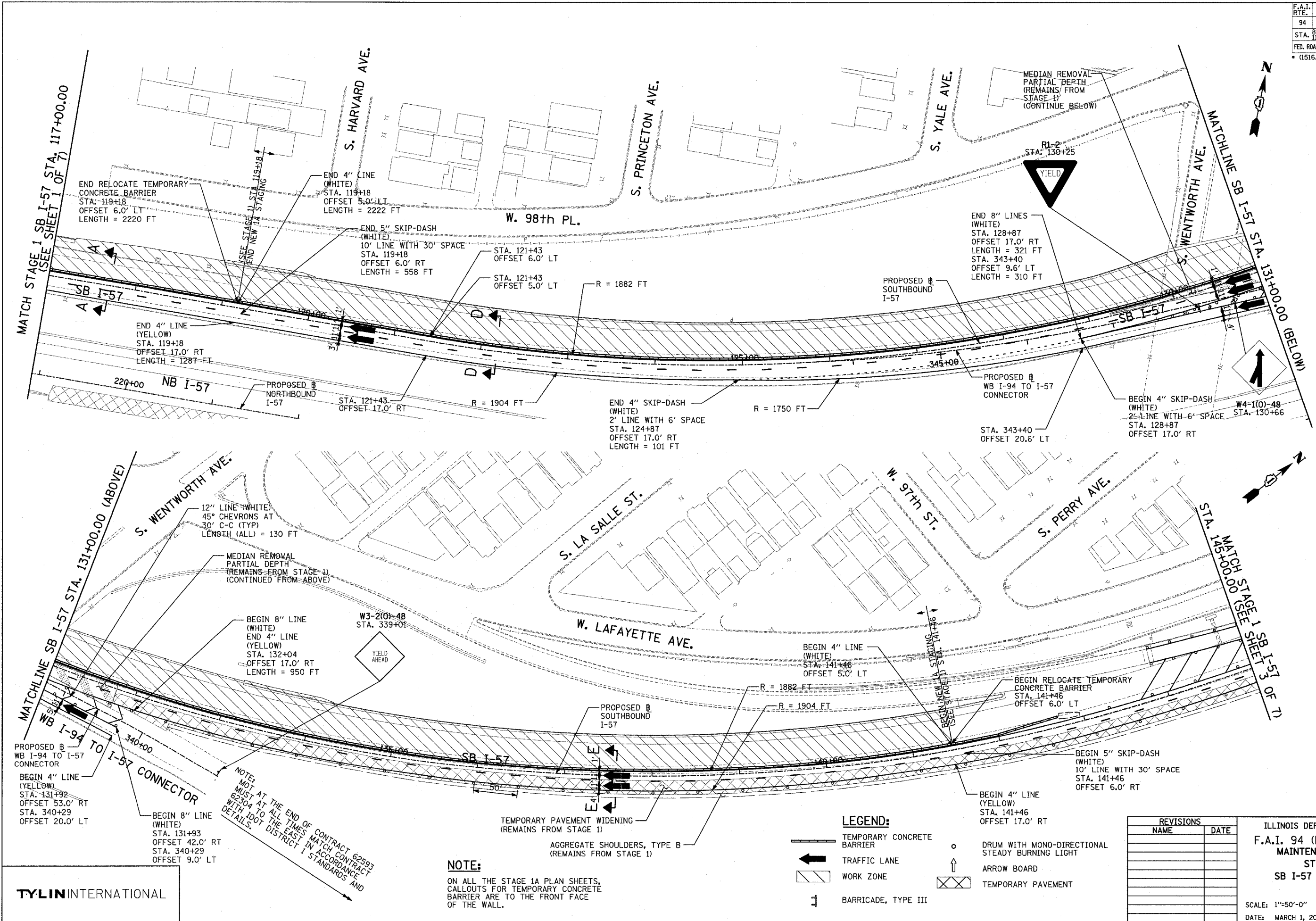


F.A.I. RTE.	SECTION	COUNTY	TOTAL SHEETS	SHEET NO.
94		COOK	764	194
STA. 1126+91 (SB FORD) TO STA. 1313+00 (SB RYAN)				
FED. ROAD DIST. NO. ILLINOIS FED. AID PROJECT				
* (1516.1, 1717, & 1818) R-5				



LEGEND:

- TEMPORARY CONCRETE BARRIER
- TRAFFIC LANE
- WORK ZONE
- BARRICADE, TYPE III
- DRUM WITH MONO-DIRECTIONAL STEADY BURNING LIGHT
- ARROW BOARD
- TEMPORARY PAVEMENT

NOTE:

ON ALL THE STAGE 1A PLAN SHEETS, CALLOUTS FOR TEMPORARY CONCRETE BARRIER ARE TO THE FRONT FACE OF THE WALL.

NOTE: NOT AT THE END OF CONTRACT 62593 MUST AT ALL TIMES MATCH CONTRACT 62304 TO THE EAST IN ACCORDANCE WITH IDOT DISTRICT 1 STANDARDS AND DETAILS.

REVISIONS	
NAME	DATE

ILLINOIS DEPARTMENT OF TRANSPORTATION
F.A.I. 94 (DAN RYAN EXPRESSWAY)
MAINTENANCE OF TRAFFIC PLAN
STAGE 1A - SB I-94
SB I-57 STA. 117+00 TO 145+00
SHEET 1 OF 1

SCALE: 1"=50'-0"
 DATE: MARCH 1, 2006

DRAWN BY: JDF
 CHECKED BY: RTM

TYLIN INTERNATIONAL