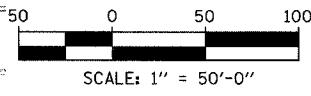
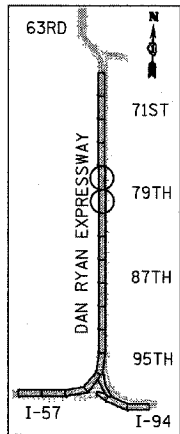
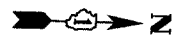
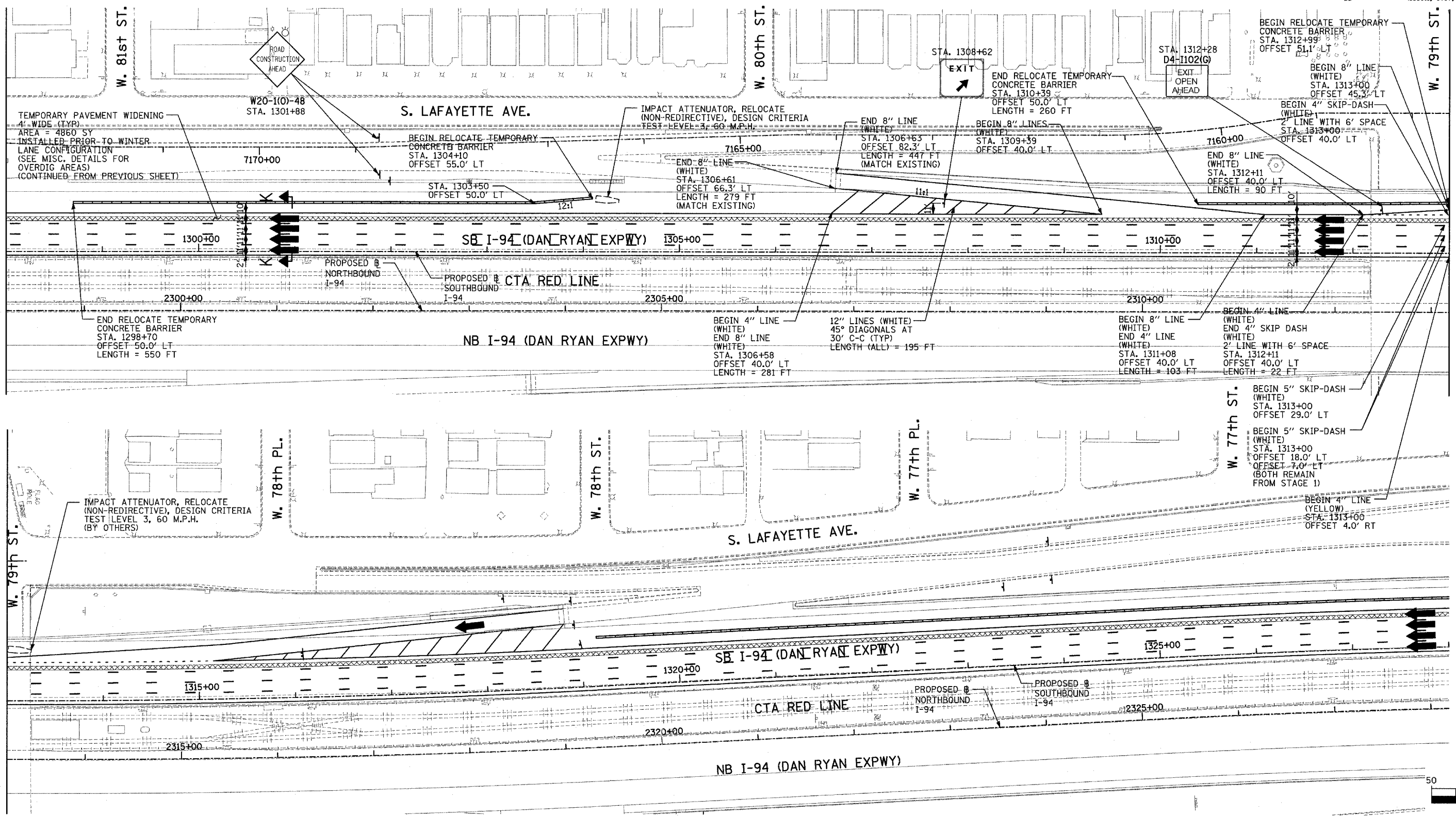


NOTE: MOT AT THE END OF CONTRACT 62593 MUST AT ALL TIMES MATCH CONTRACT 60B18 TO THE NORTH IN ACCORDANCE WITH IDOT DISTRICT 1 STANDARDS AND DETAILS.

MATCHLINE SB I-94 STA. 1298+00.00 (PREV. SHEET)

BEGIN CONTRACT #60B18 SB I-94 STA. 1313+00.00

END CONTRACT #62593 SB I-94 STA. 1313+00.00



**LEGEND:**

- TEMPORARY CONCRETE BARRIER
- TRAFFIC LANE
- WORK ZONE
- BARRICADE, TYPE III
- DRUM WITH MONO-DIRECTIONAL STEADY BURNING LIGHT
- ARROW BOARD
- TEMPORARY PAVEMENT

REVISIONS	
NAME	DATE

ILLINOIS DEPARTMENT OF TRANSPORTATION  
 F.A.I. 94 (DAN RYAN EXPRESSWAY)  
 MAINTENANCE OF TRAFFIC PLAN  
 WINTER LANE CONFIGURATION - SB I-94  
 SB I-94 STA. 1298+00 TO 1328+00  
 SHEET 7 OF 7

SCALE: 1"=50'-0"      DRAWN BY: JDF  
 DATE: MARCH 1, 2006      CHECKED BY: RTM

**TYLIN** INTERNATIONAL