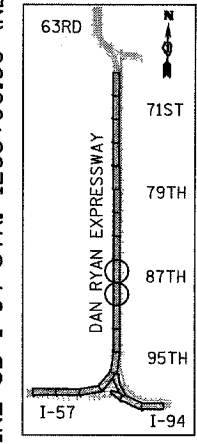
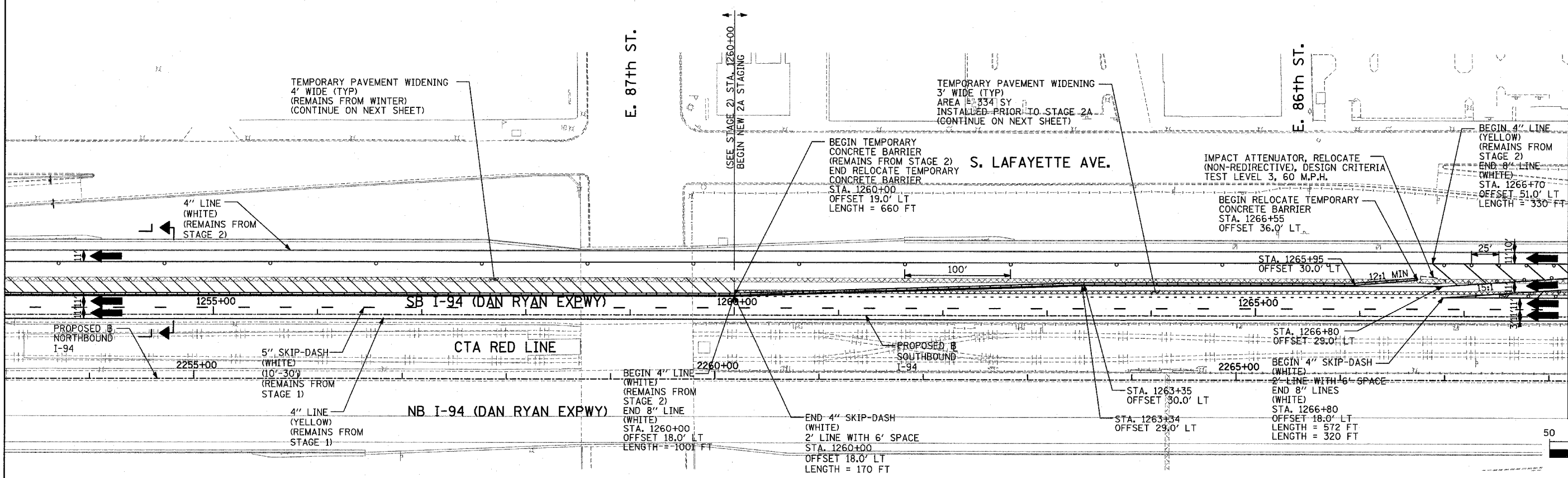
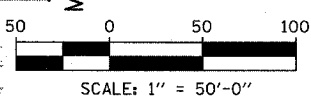


MATCH STAGE 2 SB I-94 STA. 1253+00.00 (SEE SHEET 5 OF 9 - TOP)

MATCHLINE SB I-94 STA. 1268+00.00 (NEXT SHEET)



LOCATION MAP



NOTE:
ON ALL THE STAGE 2A PLAN SHEETS, CALLOUTS FOR TEMPORARY CONCRETE BARRIER ARE TO THE FRONT FACE OF THE WALL.

LEGEND:

	TEMPORARY CONCRETE BARRIER		DRUM WITH MONO-DIRECTIONAL STEADY BURNING LIGHT
	TRAFFIC LANE		ARROW BOARD
	WORK ZONE		TEMPORARY PAVEMENT
	BARRICADE, TYPE III		

REVISIONS	
NAME	DATE

ILLINOIS DEPARTMENT OF TRANSPORTATION
F.A.I. 94 (DAN RYAN EXPRESSWAY)
MAINTENANCE OF TRAFFIC PLAN
STAGE 2A - SB I-94
SB I-94 STA. 1238+00 TO 1268+00
SHEET 1 OF 2

SCALE: 1"=50'-0" DRAWN BY: JDF
 DATE: MARCH 1, 2006 CHECKED BY: RTM

TYLIN INTERNATIONAL