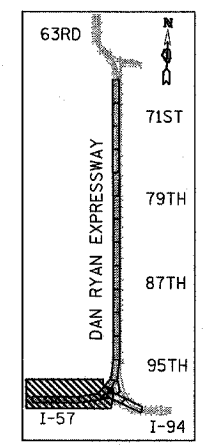


F.A.I. RTE.	SECTION	COUNTY	TOTAL SHEETS	SHEET NO.
94	*	COOK	764	235
STA. 88+60 (SB I-57) TO STA. 1313+00 (SB RYAN)				
STA. 1126+91 (SB FORD) TO STA. 1313+00 (SB RYAN)				
FED. ROAD DIST. NO.	ILLINOIS	FED. AID PROJECT		
* (1516.1, 1717, & 1818) R-5		62593		



**SIGNING LEGEND:**

- EXISTING GROUND MOUNTED SIGN
- EXISTING OVERHEAD TRUSS MOUNTED SIGN
- EXISTING OVERHEAD SIGN STRUCTURE-BRIDGE MOUNTED
- EXISTING OVERHEAD CANTILEVER MOUNTED SIGN
- PROPOSED GROUND MOUNTED SIGN
- PROPOSED OVERHEAD SIGN STRUCTURE - TRUSS
- ▨ CONSTRUCTION ZONE
- ◊ EXISTING SIGN
- ◊ EXISTING SIGN TO BE REMOVED
- ◊ PROPOSED SIGN



LOCATION MAP

OVERHEAD SIGN STRUCTURE AT STA. 133+63 SHALL BE REMOVED AT THE BEGINNING OF STAGE ONE. SIGN PANEL "EXIT 357 HALSTED ST 1/2 MILE" ON OVERHEAD SIGN STRUCTURE SHALL BE RELOCATED TO STA. 134+00 AND SHALL BE PAID FOR AS TEMPORARY INFORMATION SIGNING.

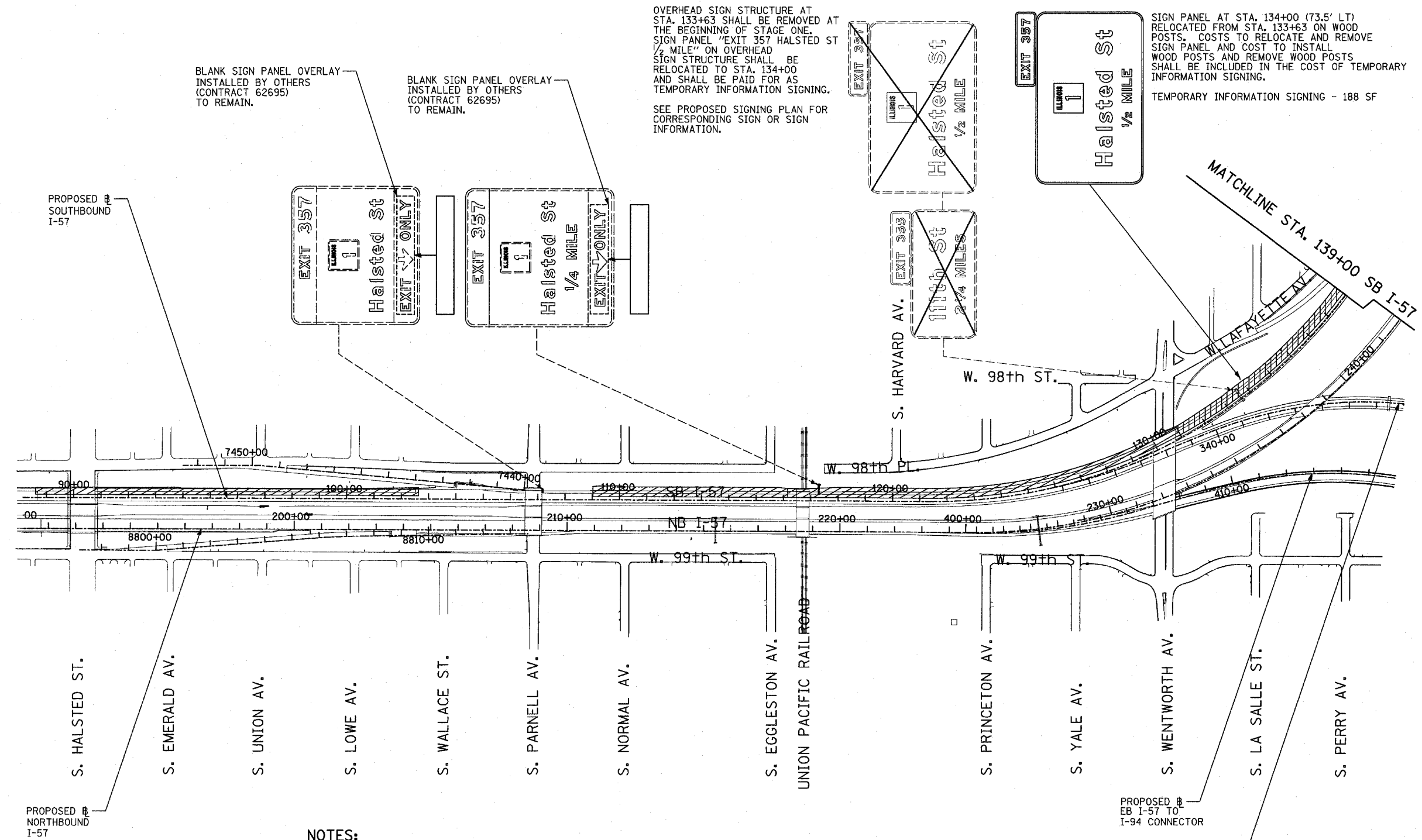
SEE PROPOSED SIGNING PLAN FOR CORRESPONDING SIGN OR SIGN INFORMATION.

BLANK SIGN PANEL OVERLAY INSTALLED BY OTHERS (CONTRACT 62695) TO REMAIN.

BLANK SIGN PANEL OVERLAY INSTALLED BY OTHERS (CONTRACT 62695) TO REMAIN.

SIGN PANEL AT STA. 134+00 (73.5' LT) RELOCATED FROM STA. 133+63 ON WOOD POSTS. COSTS TO RELOCATE AND REMOVE SIGN PANEL AND COST TO INSTALL WOOD POSTS AND REMOVE WOOD POSTS SHALL BE INCLUDED IN THE COST OF TEMPORARY INFORMATION SIGNING.

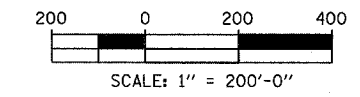
TEMPORARY INFORMATION SIGNING - 188 SF



- NOTES:**
1. PROPOSED DETOUR TRAILBLAZER TO BE REMOVED AFTER APPROPRIATE ENTRANCE RAMP HAS BEEN OPENED. COST SHALL BE INCLUDED IN TEMPORARY INFORMATION SIGNING. SEE SHEET 1 OF STAGE 1 CONSTRUCTION SIGNING PLANS FOR TRAILBLAZER SIZE.
  2. REMOVED SIGN PANEL SHALL BECOME THE PROPERTY OF CONTRACTOR AND BE DISPOSED OFFSITE.
  3. RELOCATION OF SIGNS SHALL BE INCLUDED IN THE COST OF TEMPORARY INFORMATION SIGNING.

**TRAILBLAZER LEGEND**

- EAST M3-2 (24"x12")
- INTERSTATE 94 M1-1 (24"x24")
- M6-3 (21"x15")
- DETOUR M4-8 (24"x12")



REVISIONS	
NAME	DATE

ILLINOIS DEPARTMENT OF TRANSPORTATION  
 F.A.I. 94 (DAN RYAN EXPRESSWAY)  
 CONSTRUCTION SIGNING-STAGE 1 & 1A  
 SB I-57 STA. 100+00 TO STA 139+00  
 SHEET 1 OF 4

SCALE: 1" = 200'  
 DATE: MARCH 1, 2006  
 DRAWN BY: AMB  
 CHECKED BY: TGB

**TYLIN** INTERNATIONAL