

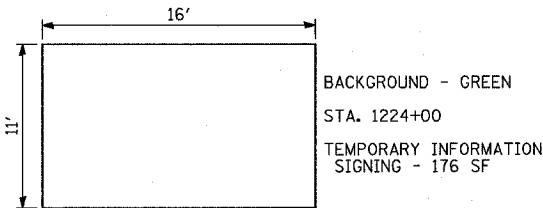
NOTES:

1. PROPOSED DETOUR TRAILBLAZER TO BE REMOVED AFTER APPROPRIATE ENTRANCE RAMP HAS BEEN OPENED. COST SHALL BE INCLUDED IN TEMPORARY INFORMATION SIGNING. SEE SHEET 1 OF STAGE 1 CONSTRUCTION SIGNING PLANS FOR TRAILBLAZER SIZE.

2. REMOVED SIGN PANEL SHALL BECOME THE PROPERTY OF CONTRACTOR AND BE DISPOSED OFFSITE.

3. RELOCATION OF SIGNS SHALL BE INCLUDED IN THE COST OF TEMPORARY INFORMATION SIGNING.

F.A.I. RTE.	SECTION	COUNTY	TOTAL SHEETS	SHEET NO.
94		COOK	764	249
STA. 88+60 (SB I-57) TO STA. 1313+00 (SB RYAN)				
FED. ROAD DIST. NO. ILLINOIS FED. AID PROJECT				
• (1516.1, 1717, & 1818) R-5				



BACKGROUND - GREEN
STA. 1224+00
TEMPORARY INFORMATION SIGNING - 176 SF

BLANK SIGN PANEL OVERLAY TO REMAIN.

COVER SIGN WITH 16'X11' BLANK SIGN PANEL OVERLAY. SEE DETAILS ON SAME SHEET. (STA. 1224+00)

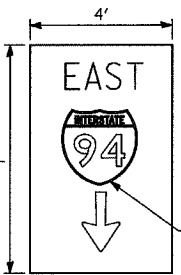
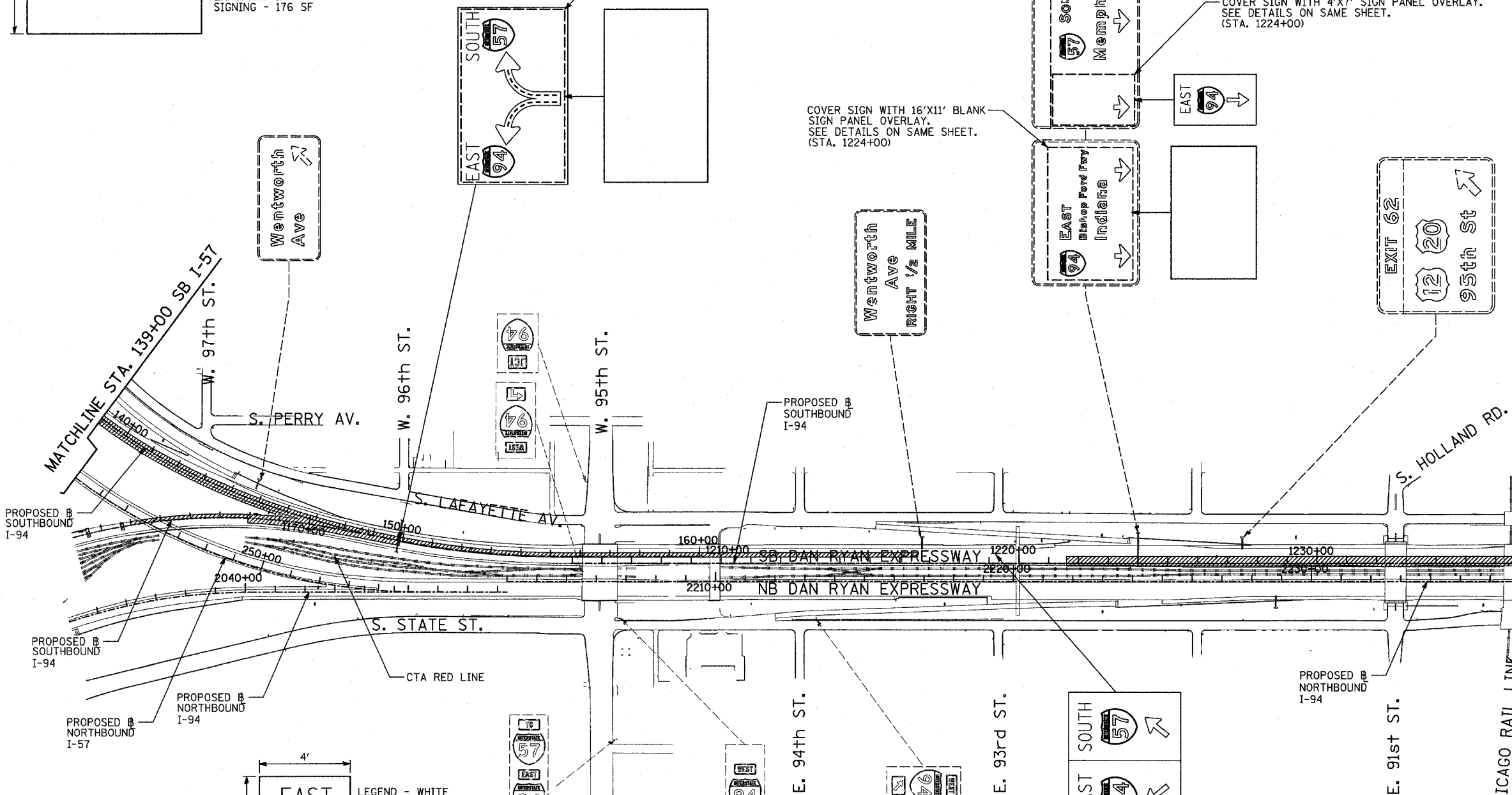
REMOVE SIGN PANEL OVERLAY. REMOVAL OF SIGN PANEL OVERLAY SHALL BE PAID FOR AS REMOVE SIGN PANEL - TYPE 1. (STA. 1224+00)

NOTE 2
REMOVE SIGN PANEL - TYPE 1 - 6 SF

COVER SIGN WITH 4'X7' SIGN PANEL OVERLAY. SEE DETAILS ON SAME SHEET. (STA. 1224+00)

SIGNING LEGEND:

- EXISTING GROUND MOUNTED SIGN
- EXISTING OVERHEAD TRUSS MOUNTED SIGN
- EXISTING OVERHEAD SIGN STRUCTURE-BRIDGE MOUNTED SIGN
- EXISTING OVERHEAD CANTILEVER MOUNTED SIGN
- PROPOSED GROUND MOUNTED SIGN
- PROPOSED OVERHEAD SIGN STRUCTURE - TRUSS
- CONSTRUCTION ZONE
- EXISTING SIGN
- EXISTING SIGN TO BE REMOVED
- PROPOSED SIGN

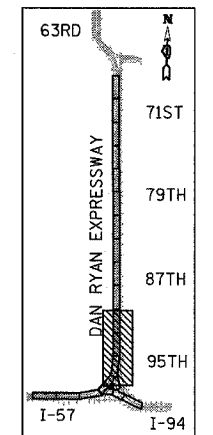
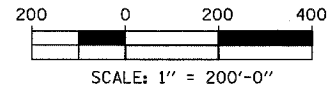


LEGEND - WHITE BACKGROUND - GREEN 10" E LETTERS
STA. 1224+00
TEMPORARY INFORMATION SIGNING - 28 SF

24" STANDARD SHIELD

RELOCATE FROM STA. 1207+00 (STAGE 2 & 2A) TO STA. 1219+22, 32.2' LT (SKID MOUNT AT CENTER OF GORE) REMOVE SIGN AT END OF STAGE 3A.

NOTE 3



LOCATION MAP

TYLIN INTERNATIONAL

REVISIONS	
NAME	DATE

ILLINOIS DEPARTMENT OF TRANSPORTATION
F.A.I. 94 (DAN RYAN EXPRESSWAY)
CONSTRUCTION SIGNING-STAGE 3A
STA. 139+00 TO STA 1237+00
SHEET 2 OF 2

SCALE: 1" = 200'
DATE: MARCH 1, 2006
DRAWN BY: AMB
CHECKED BY: TGB