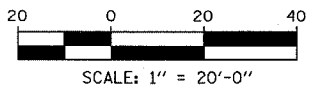
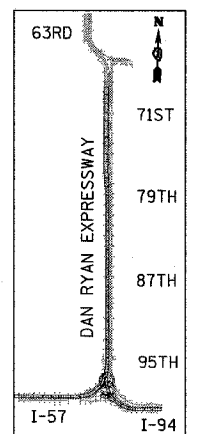
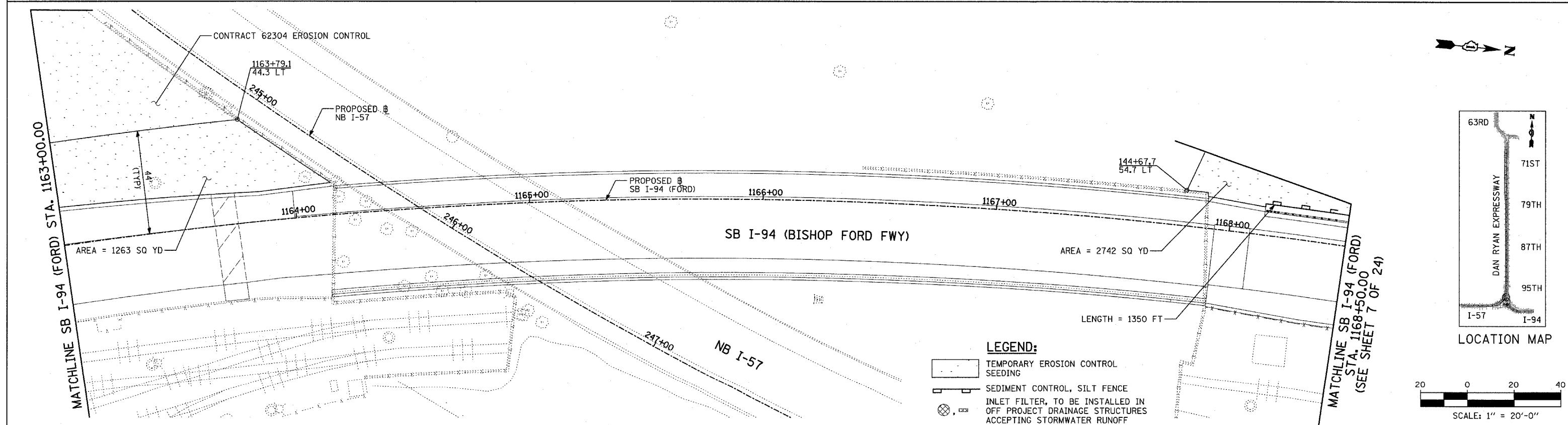
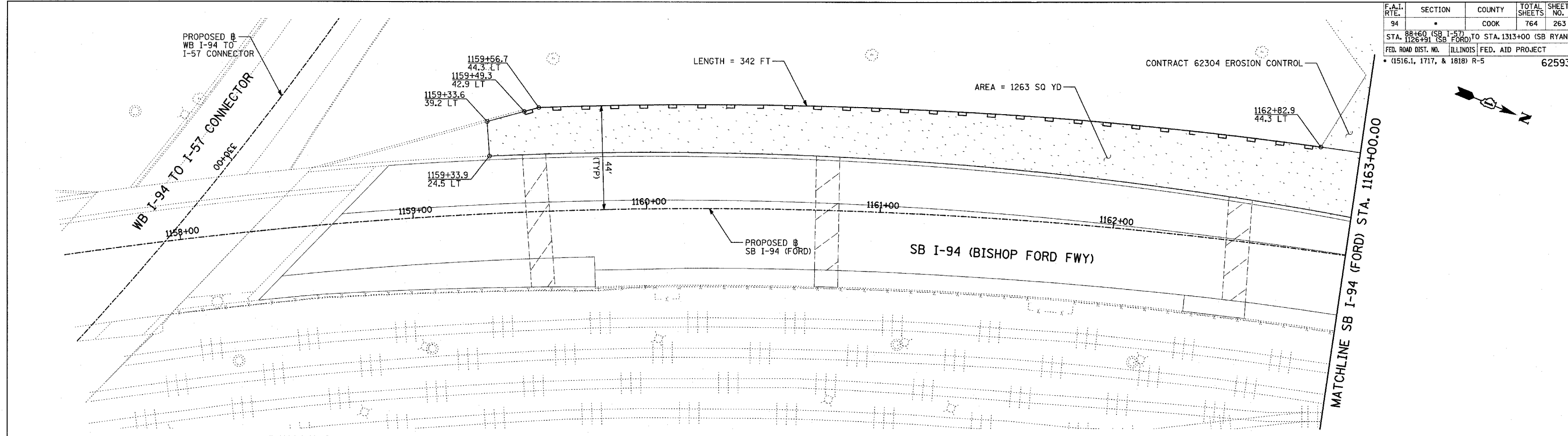


F.A.I. RTE.	SECTION	COUNTY	TOTAL SHEETS	SHEET NO.
94	*	COOK	764	263
STA. 98+60 (SB I-57) TO STA. 1313+00 (SB RYAN)				
FED. ROAD DIST. NO. ILLINOIS FED. AID PROJECT				
* (1516.1, 1717, & 1818) R-5 62593				



- LEGEND:**
- TEMPORARY EROSION CONTROL SEEDING
 - SEDIMENT CONTROL, SILT FENCE
 - INLET FILTER, TO BE INSTALLED IN OFF PROJECT DRAINAGE STRUCTURES ACCEPTING STORMWATER RUNOFF
 - TEMPORARY FENCE
 - TEMPORARY DITCH CHECK
 - PROPOSED DRAINAGE SWALE (SEE DRAINAGE PLANS)
 - EXISTING DRAINAGE SWALE
 - TEMPORARY FENCE FOR TREE PROTECTION (15 FEET PER SIDE = 60 FEET TOTAL)

REVISIONS	
NAME	DATE

ILLINOIS DEPARTMENT OF TRANSPORTATION
 F.A.I. 94 (DAN RYAN EXPRESSWAY)
 EROSION CONTROL PLAN
 SB I-94 (BISHOP FORD FWY)
 STA. 1157+50.00 TO 1168+50.00
 SHEET 8 OF 24

SCALE: 1"=20'
 DATE: MARCH 1, 2006

DRAWN BY: JJS
 CHECKED BY: MPG

TYLIN INTERNATIONAL

TOTAL NUMBER OF INLET FILTERS THIS SHEET: 0
 TOTAL NUMBER OF TEMPORARY DITCH CHECKS THIS SHEET: 0
 TOTAL NUMBER OF TREES TO BE PROTECTED THIS SHEET: 0