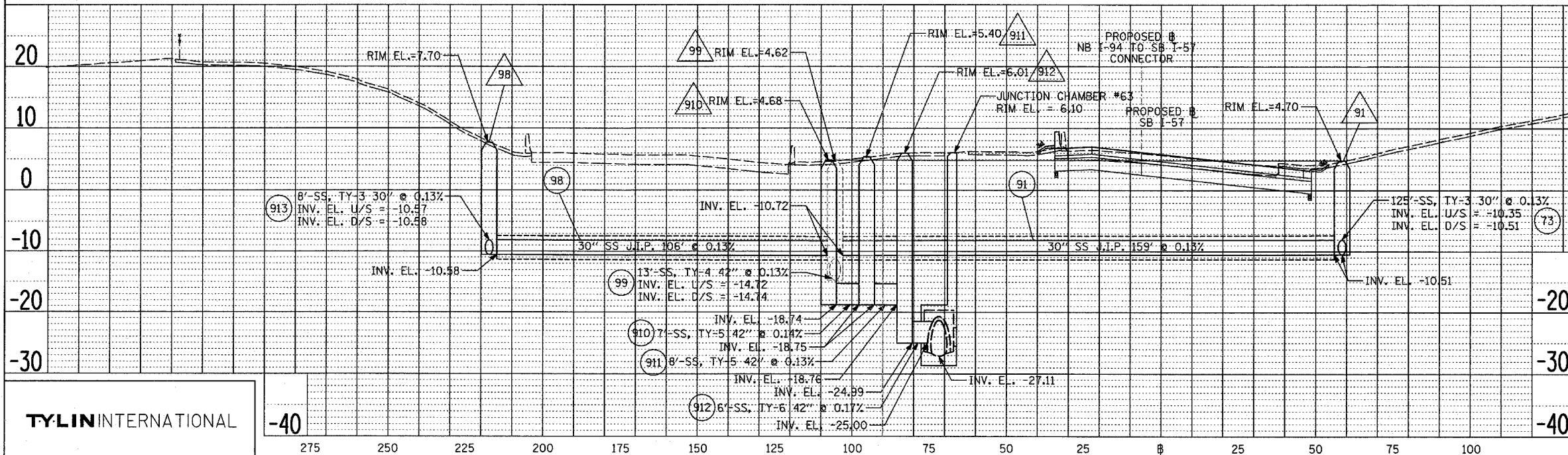
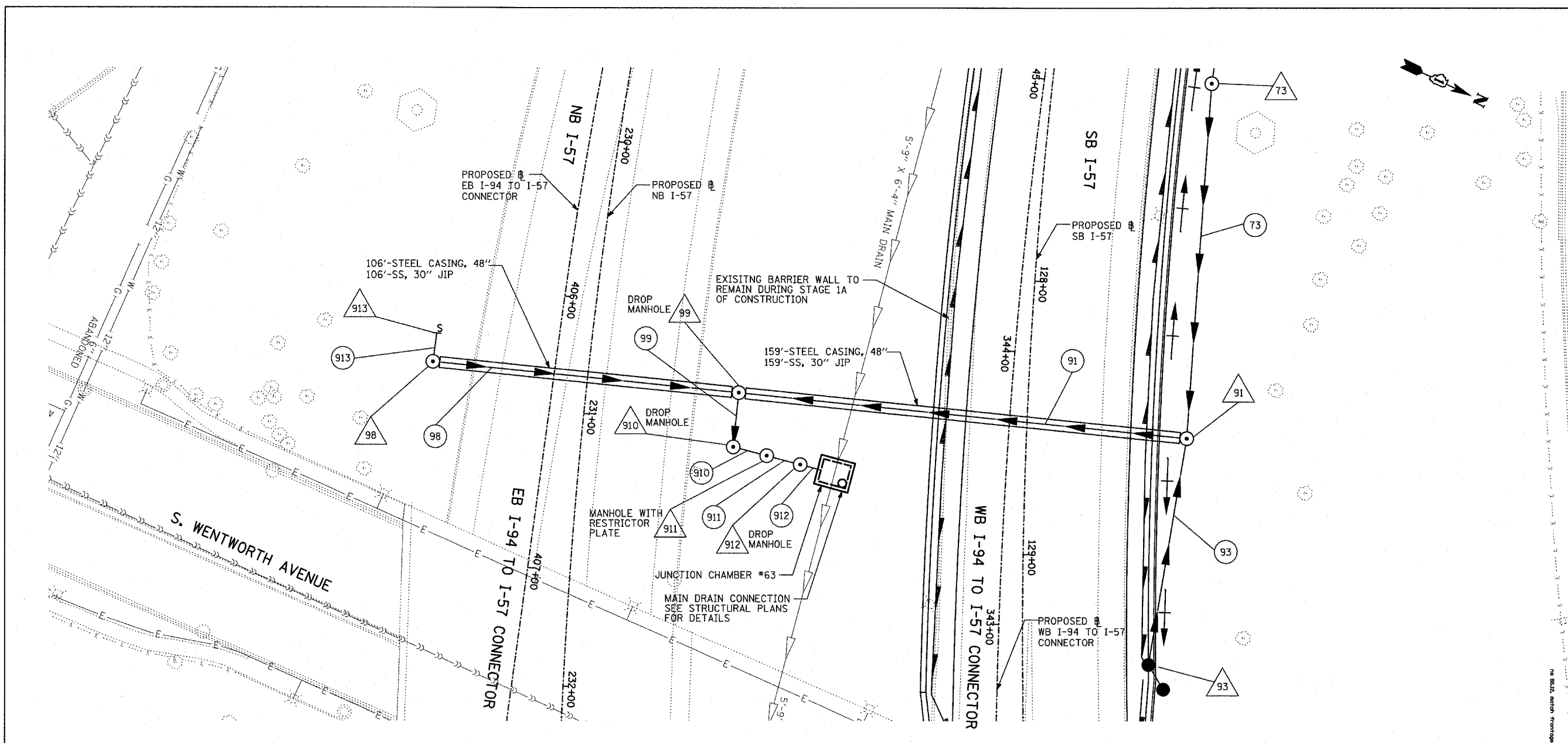
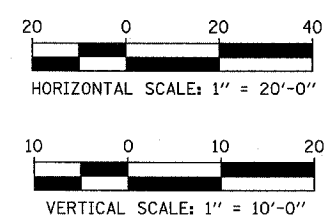
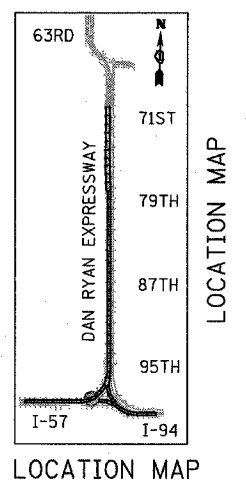
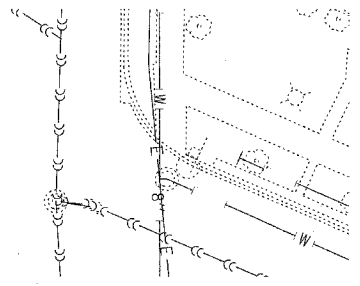


F.A.I. RTE.	SECTION	COUNTY	TOTAL SHEETS	SHEET NO.
94		COOK	764	291
STA. 88+60 (SB I-57) TO STA. 1313+00 (SB RYAN)				
STA. 1126+91 (SB FORD)				
FED. ROAD DIST. NO. ILLINOIS FED. AID PROJECT				
• (1516, 1717, & 1818) R-5 62593				



SHEET 10 OF 65

REVISIONS	
NAME	DATE

ILLINOIS DEPARTMENT OF TRANSPORTATION
 F.A.I. 94 (DAN RYAN EXPRESSWAY)
 STORM SEWER JACKING
 JUNCTION CHAMBER #63

SCALE: 1"=20' HORIZ.
 1"=10' VERT.

DATE: MARCH 1, 2006

DRAWN BY: NSB
 CHECKED BY: DA

TYLIN INTERNATIONAL

DATE	
BY	
SURVEYED	
PLOTTED	
NOTED	
CHECKED	
DESIGNED	
NO. 1	

DATE	
BY	
SURVEYED	
PLOTTED	
NOTED	
CHECKED	
DESIGNED	
NO. 1	