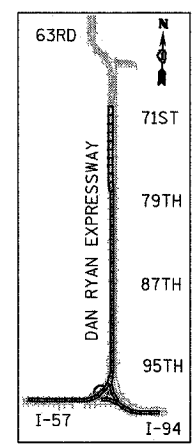
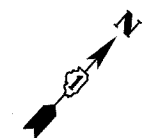
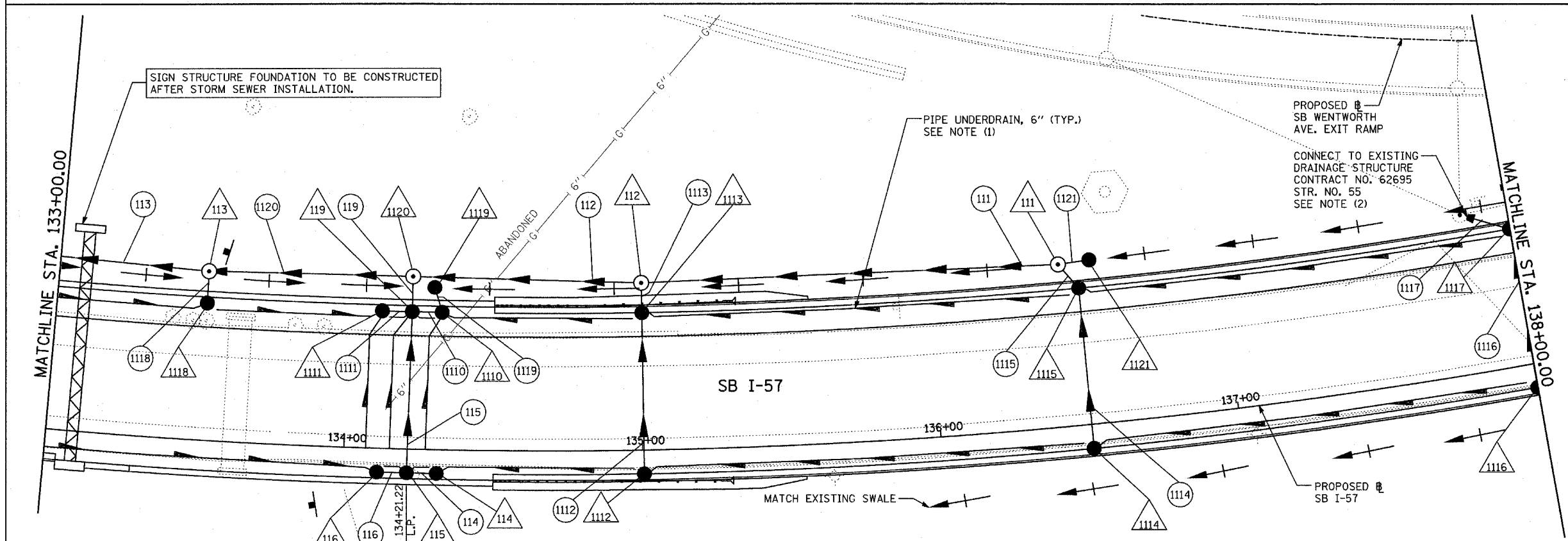


EXISTING CONDITIONS  
PROPOSED IMPROVEMENTS



LOCATION MAP

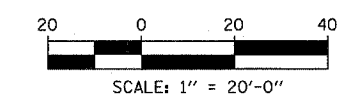
**TYLIN INTERNATIONAL**

**LEGEND:**

	EXISTING COMBINED SEWER		SEWER PLUG
	PROPOSED STORM SEWER NUMBER (X=SHEET NO., Y=PIPE NO.)		FIELD VERIFY
	PROPOSED STRUCTURE NUMBER (X=SHEET NO., Y=STRUCTURE NO.)		UTILITY REMOVAL
	PIPE STUBOUT TO BE PLUGGED		PROPOSED CATCH BASIN CONSTRUCTED IN CONCURRENT CONTRACT 62304
			PROPOSED STORM SEWER CONSTRUCTED IN CONCURRENT CONTRACT 62304

**NOTES:**

- FOR CLARITY, PIPE UNDERDRAINS ARE SHOWN OFFSET FROM THEIR PROPOSED LOCATIONS. FOR DETAILED PLACEMENT, SEE SHEET "PIPE UNDERDRAINS DETAIL."
- CORE DRILL AND CONNECT TO EXISTING DRAINAGE STRUCTURE. CONNECTION COST SHALL BE INCLUDED IN THE COST TO CONSTRUCT THE STORM SEWER.



SHEET 11 OF 65

REVISIONS	
NAME	DATE

ILLINOIS DEPARTMENT OF TRANSPORTATION  
F.A.I. 94 (DAN RYAN EXPRESSWAY)  
DRAINAGE AND UTILITY PLANS  
I-57  
SB I-57 STA. 133+00.00 TO 138+00.00

SCALE: 1"=20'  
DATE: MARCH 1, 2006

DRAWN BY: NSB  
CHECKED BY: DA