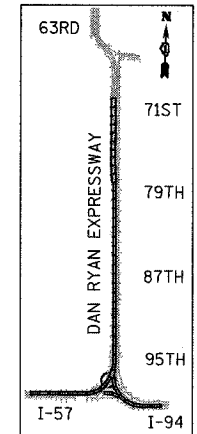
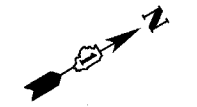
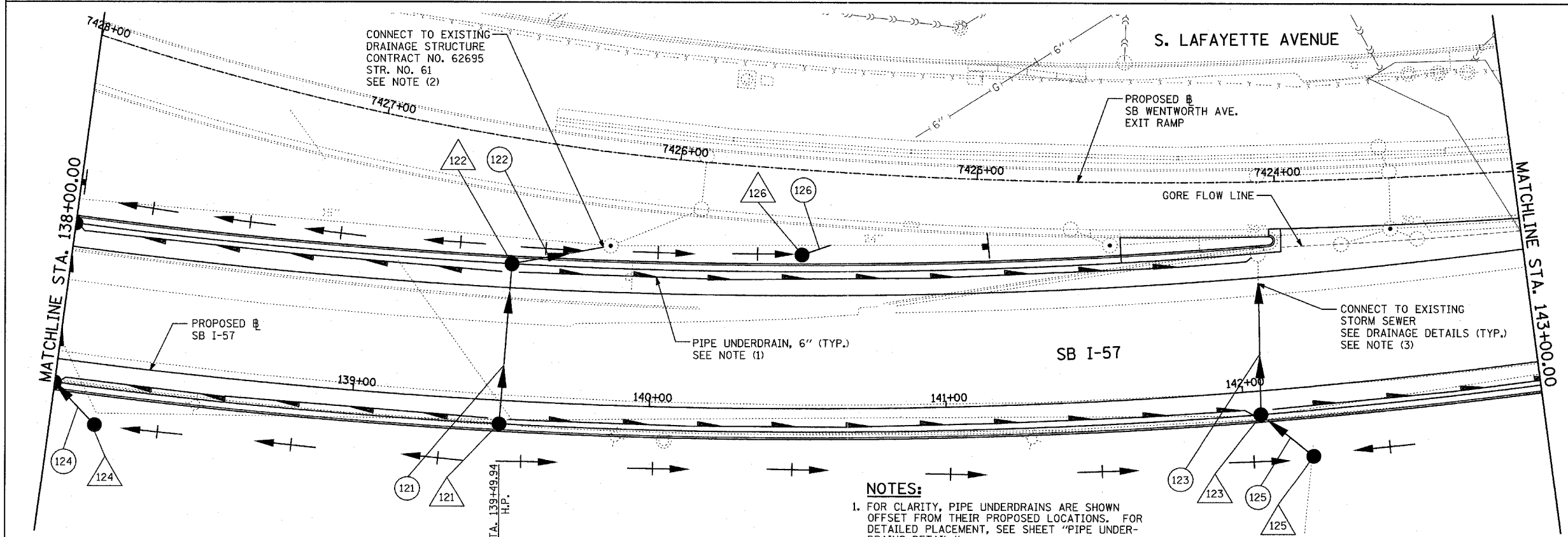


EXISTING CONDITIONS
PROPOSED IMPROVEMENTS

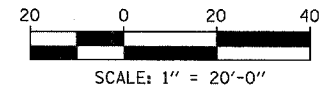


LOCATION MAP

TYLIN INTERNATIONAL

- LEGEND:**
- EXISTING COMBINED SEWER
 - PROPOSED STORM SEWER NUMBER (X=SHEET NO., Y=PIPE NO.)
 - PROPOSED STRUCTURE NUMBER (X=SHEET NO., Y=STRUCTURE NO.)
 - PIPE STUBOUT TO BE PLUGGED
 - S-EWER PLUG
 - F.V. FIELD VERIFY
 - UTILITY REMOVAL
 - PROPOSED CATCH BASIN CONSTRUCTED IN CONCURRENT CONTRACT 62304
 - PROPOSED STORM SEWER CONSTRUCTED IN CONCURRENT CONTRACT 62304

- NOTES:**
- FOR CLARITY, PIPE UNDERDRAINS ARE SHOWN OFFSET FROM THEIR PROPOSED LOCATIONS. FOR DETAILED PLACEMENT, SEE SHEET "PIPE UNDERDRAINS DETAIL."
 - CORE DRILL AND CONNECT TO EXISTING DRAINAGE STRUCTURE. CONNECTION COST SHALL BE INCLUDED IN THE COST TO CONSTRUCT THE STORM SEWER.
 - COST SHALL NOT BE PAID FOR SEPARATELY BUT INCLUDED IN COST OF SEWER INSTALLATION.
 - STRUCTURES TO BE ADJUSTED DURING STAGE 1 OF CONSTRUCTION TO MAINTAIN SURFACE DRAINAGE. THIS COST SHALL BE PAID FOR SEPARATELY AND INCLUDED IN THE SUMMARY OF QUANTITIES.



SHEET 12 OF 65

REVISIONS	
NAME	DATE

ILLINOIS DEPARTMENT OF TRANSPORTATION
F.A.I. 94 (DAN RYAN EXPRESSWAY)
DRAINAGE AND UTILITY PLANS
SB I-57
STA. 138+00.00 TO STA. 143+00.00

SCALE: 1"=20'
DATE: MARCH 1, 2006

DRAWN BY: NSB
CHECKED BY: DA