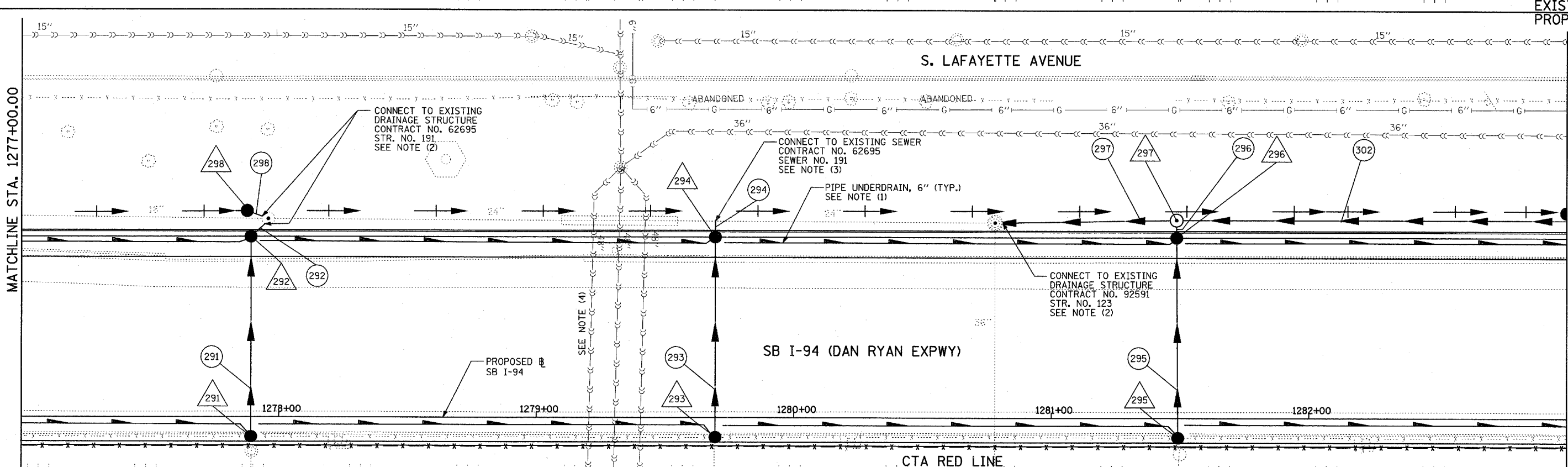
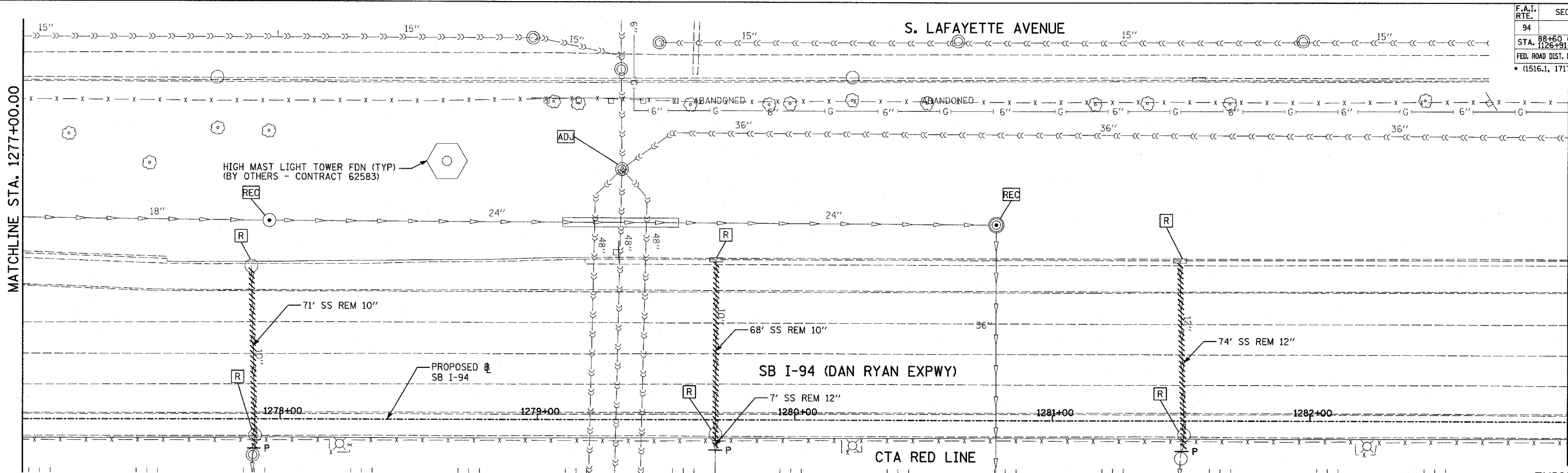
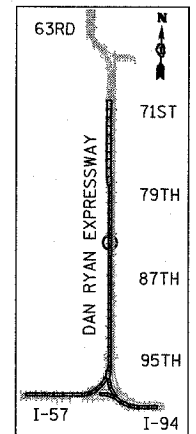


F.A.I. RTE.	SECTION	COUNTY	TOTAL SHEETS	SHEET NO.
94		COOK	764	310
STA. 126+91 (SB FORD) TO STA. 1313+00 (SB RYAN)				
FED. ROAD DIST. NO. ILLINOIS FED. AID PROJECT				
• (1516.1, 1717, & 1818) R-5				



EXISTING CONDITIONS
PROPOSED IMPROVEMENTS



LOCATION MAP

LEGEND:

- EXISTING COMBINED SEWER
- PROPOSED STORM SEWER NUMBER (X=SHEET NO., Y=PIPE NO.)
- PROPOSED STRUCTURE NUMBER (X=SHEET NO., Y=STRUCTURE NO.)
- PIPE STUBOUT TO BE PLUGGED
- SEWER PLUG
- F.V. FIELD VERIFY
- UTILITY REMOVAL
- PROPOSED CATCH BASIN CONSTRUCTED IN CONCURRENT CONTRACT 62304
- PROPOSED STORM SEWER CONSTRUCTED IN CONCURRENT CONTRACT 62304

NOTES:

- FOR CLARITY, PIPE UNDERDRAINS ARE SHOWN OFFSET FROM THEIR PROPOSED LOCATIONS. FOR DETAILED PLACEMENT, SEE SHEET "PIPE UNDERDRAINS DETAIL."
- CORE DRILL AND CONNECT TO EXISTING DRAINAGE STRUCTURE. CONNECTION COST SHALL BE INCLUDED IN THE COST TO CONSTRUCT THE STORM SEWER.
- COST SHALL NOT BE PAID FOR SEPARATELY BUT INCLUDED IN COST OF SEWER INSTALLATION.
- THE CONTRACTOR SHALL COORDINATE ALL WORK WITH COC-DOWN SEWER SECTION PRIOR TO ANY EXCAVATION. RISER SHAFTS, IF ENCOUNTERED, SHALL BE CONSTRUCTED AND PAID FOR AS PER DETAIL SHOWN ON DRAINAGE DETAIL SHEET 3 OF 3.

SHEET 29 OF 65

REVISIONS	
NAME	DATE

ILLINOIS DEPARTMENT OF TRANSPORTATION
F.A.I. 94 (DAN RYAN EXPRESSWAY)
DRAINAGE AND UTILITY PLAN
SB I-94 (DAN RYAN EXPRESSWAY)
SB I-94 STA. 1277+00.00 TO 1283+00.00

SCALE: 1"=20'
DATE: MARCH 1, 2006

DRAWN BY: NSB
CHECKED BY: DA

TYLIN INTERNATIONAL

