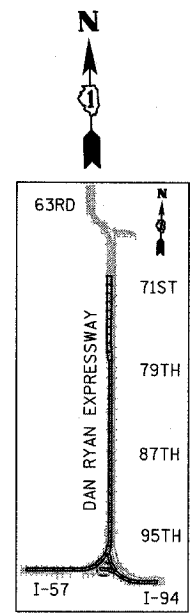
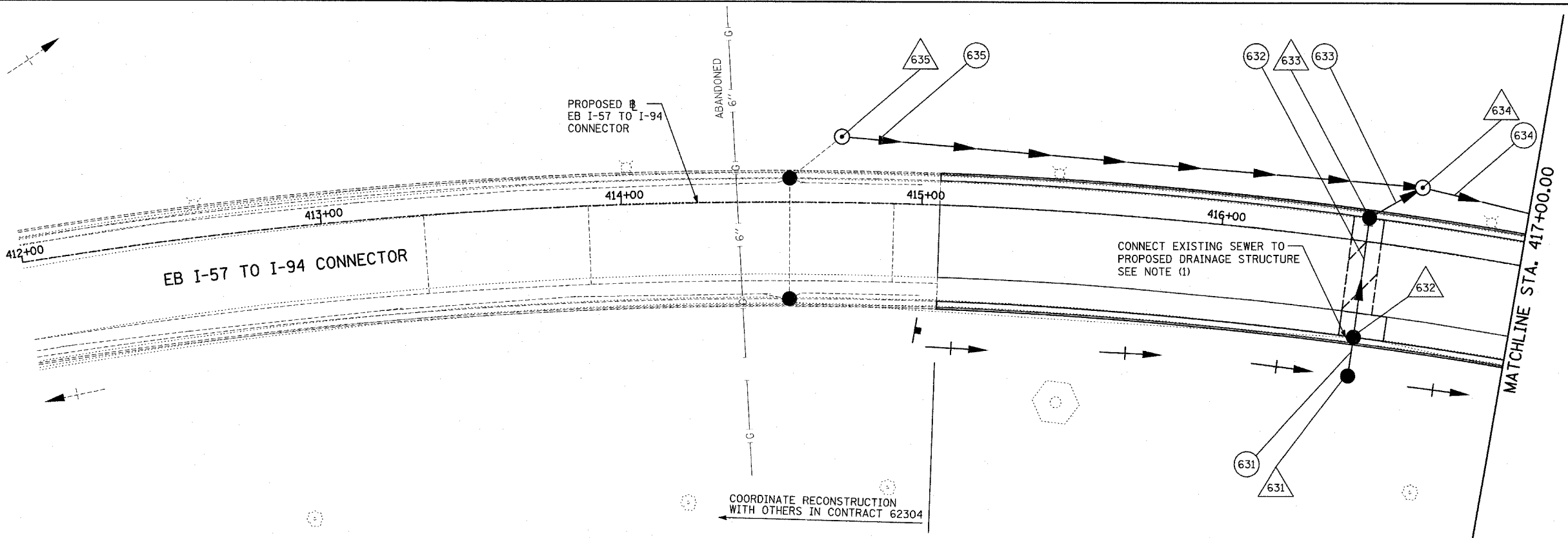


EXISTING CONDITIONS  
PROPOSED IMPROVEMENTS



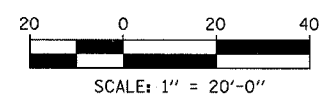
LOCATION MAP

TYLIN INTERNATIONAL

- LEGEND:**
- EXISTING COMBINED SEWER
  - (XY) PROPOSED STORM SEWER NUMBER (X=SHEET NO., Y=PIPE NO.)
  - (XY) PROPOSED STRUCTURE NUMBER (X=SHEET NO., Y=STRUCTURE NO.)
  - S- PIPE STUBOUT TO BE PLUGGED
  - P SEWER PLUG
  - F.V. FIELD VERIFY
  - ////// UTILITY REMOVAL
  - PROPOSED CATCH BASIN CONSTRUCTED IN CONCURRENT CONTRACT 62304
  - PROPOSED STORM SEWER CONSTRUCTED IN CONCURRENT CONTRACT 62304

**NOTES:**

1. COST SHALL NOT BE PAID FOR SEPARATELY BUT INCLUDED IN COST OF SEWER INSTALLATION.



SHEET 63 OF 65

REVISIONS	
NAME	DATE

ILLINOIS DEPARTMENT OF TRANSPORTATION  
F.A.I. 94 (DAN RYAN EXPRESSWAY)  
DRAINAGE AND UTILITY PLAN  
EB I-57 TO I-94 CONNECTOR  
EB CONN. STA. 415+06.00 TO 417+00.00

SCALE: 1"=20'  
DATE: MARCH 1, 2006

DRAWN BY: NSB  
CHECKED BY: DA