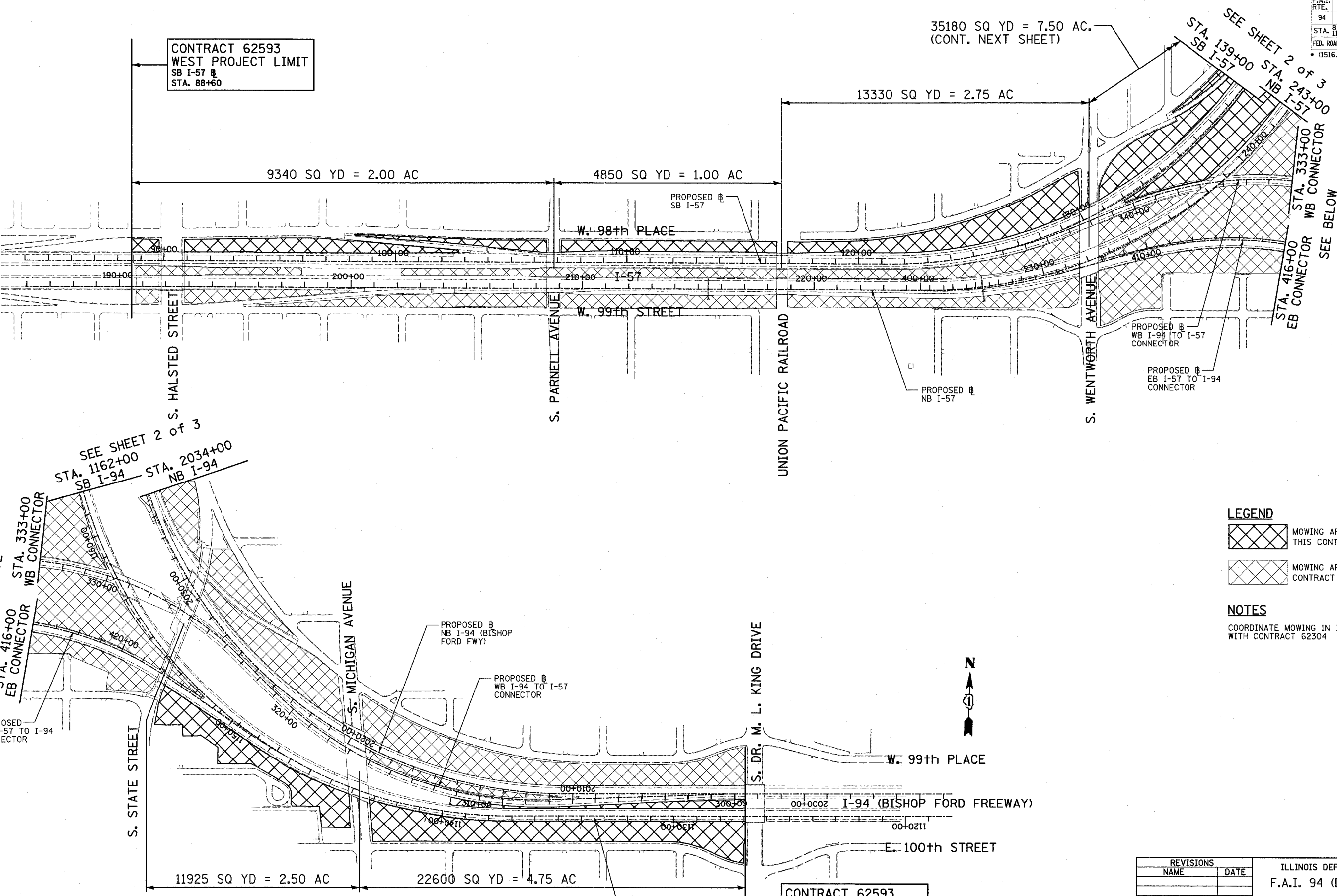


F.A.I. RTE.	SECTION	COUNTY	TOTAL SHEETS	SHEET NO.
94	*	COOK	764	413
STA. 88+60 (SB I-57) TO STA. 1126+91 (SB FORD)				
STA. 1126+91 (SB FORD) TO STA. 1313+00 (SB RYAN)				
FED. ROAD DIST. NO. ILLINOIS FED. AID PROJECT				
* (1516.1, 1717, & 1818) R-5				
				62593

CONTRACT 62593
WEST PROJECT LIMIT
 SB I-57 @
 STA. 88+60

35180 SQ YD = 7.50 AC.
 (CONT. NEXT SHEET)



SEE SHEET 2 of 3
 STA. 139+00 SB I-57
 STA. 243+00 NB I-57
 STA. 333+00 WB CONNECTOR
 STA. 416+00 EB CONNECTOR
 SEE BELOW

SEE SHEET 2 of 3
 STA. 1162+00 SB I-94
 STA. 2034+00 NB I-94

SEE ABOVE
 STA. 333+00 WB CONNECTOR
 STA. 416+00 EB CONNECTOR

LEGEND

- MOWING AREAS THIS CONTRACT
- MOWING AREAS CONTRACT 62304

NOTES

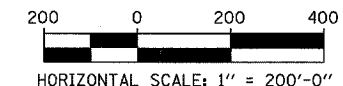
COORDINATE MOWING IN INTERCHANGE WITH CONTRACT 62304



11925 SQ YD = 2.50 AC

22600 SQ YD = 4.75 AC

CONTRACT 62593
EAST PROJECT LIMIT
 SB I-94 (BISHOP FORD) @
 STA. 1126+91



REVISIONS	
NAME	DATE

ILLINOIS DEPARTMENT OF TRANSPORTATION
 F.A.I. 94 (DAN RYAN EXPRESSWAY)

MOWING AREAS
 SHEET 1 OF 3

SCALE: 1"=200'-0"
 DATE: MARCH 1, 2006

DRAWN BY: MPG
 CHECKED BY: TGB

TYLIN INTERNATIONAL