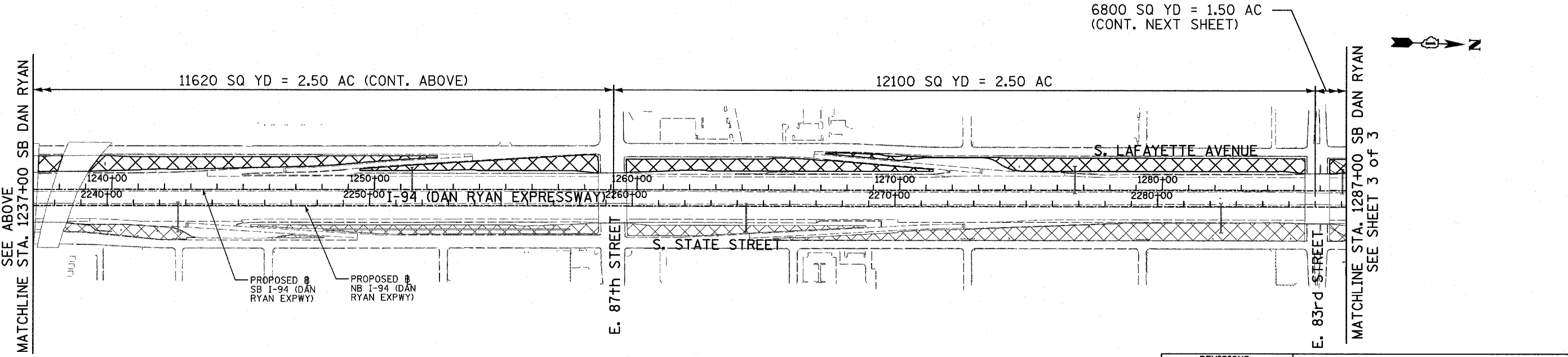
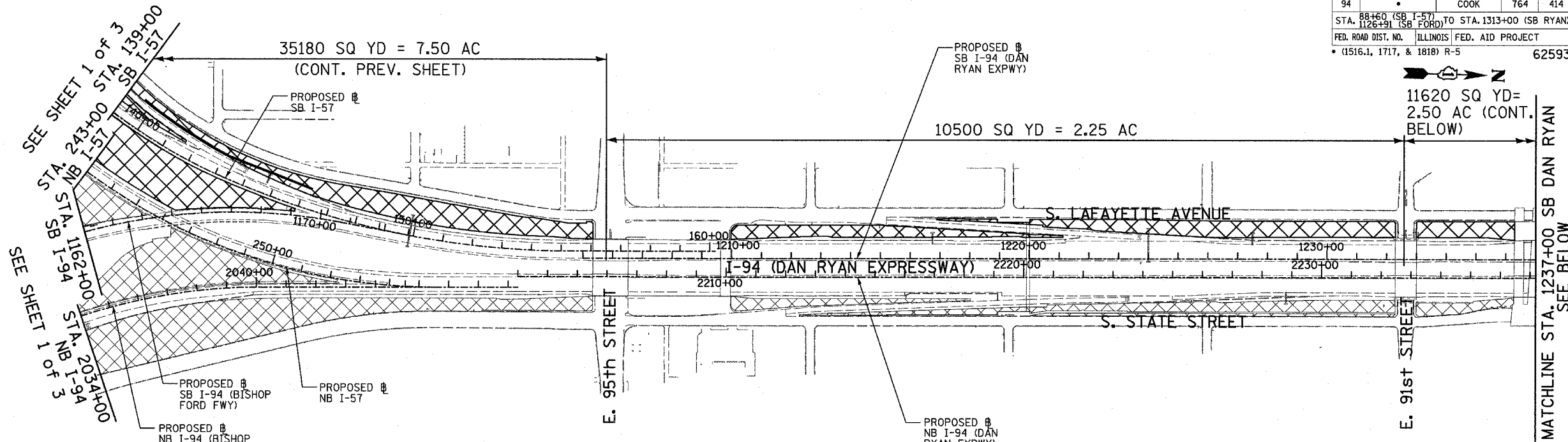




F.A.I. RTE.	SECTION	COUNTY	TOTAL SHEETS	SHEET NO.
94		COOK	764	414
STA. 88+60 (SB I-57) TO STA. 1313+00 (SB RYAN)				
STA. 1126+91 (SB FORD)				
FED. ROAD DIST. NO. ILLINOIS FED. AID PROJECT				
* (1516.1, 1717, & 1818) R-5				
				62593



- LEGEND**
-  MOWING AREAS THIS CONTRACT
  -  MOWING AREAS CONTRACT 62304

**NOTES**

COORDINATE MOWING IN INTERCHANGE WITH CONTRACT 62304

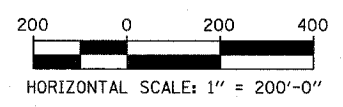
REVISIONS	
NAME	DATE

ILLINOIS DEPARTMENT OF TRANSPORTATION  
 F.A.I. 94 (DAN RYAN EXPRESSWAY)

**MOWING AREAS  
 SHEET 2 OF 3**

SCALE: 1"=200'  
 DATE: MARCH 1, 2006

DRAWN BY: MPG  
 CHECKED BY: TGB



**TYLIN INTERNATIONAL**