

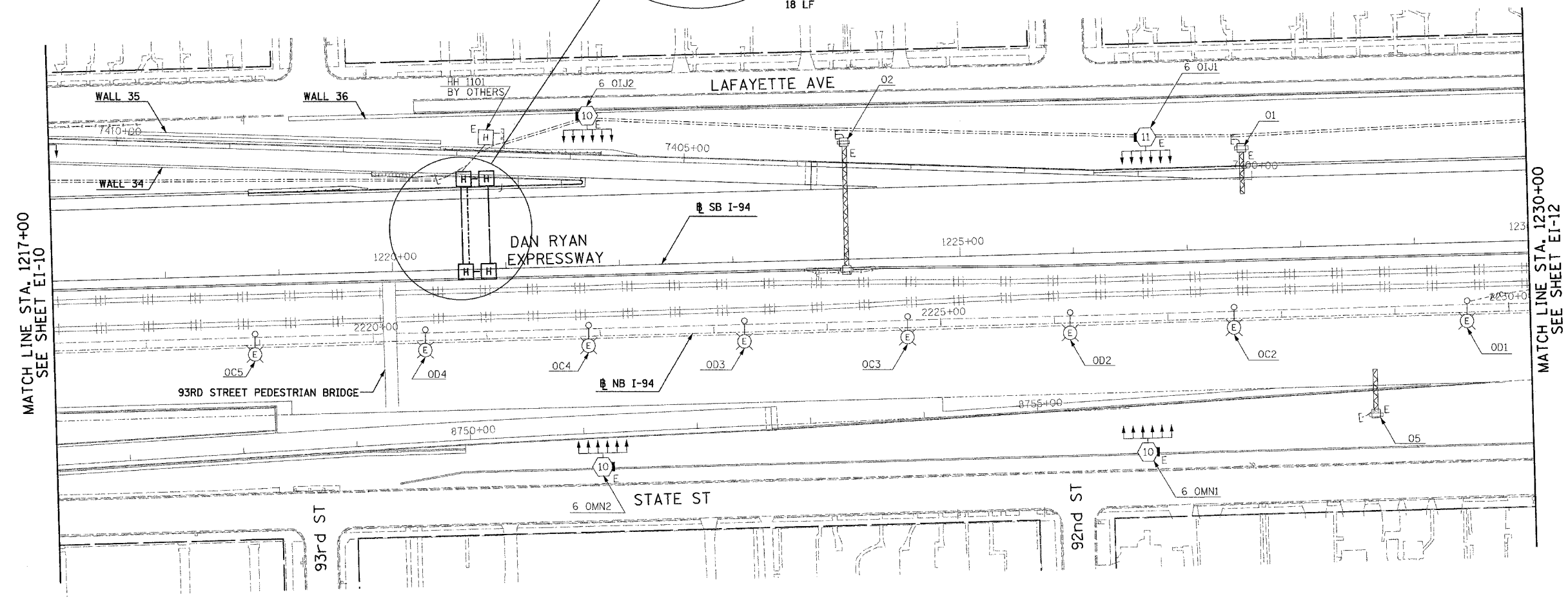
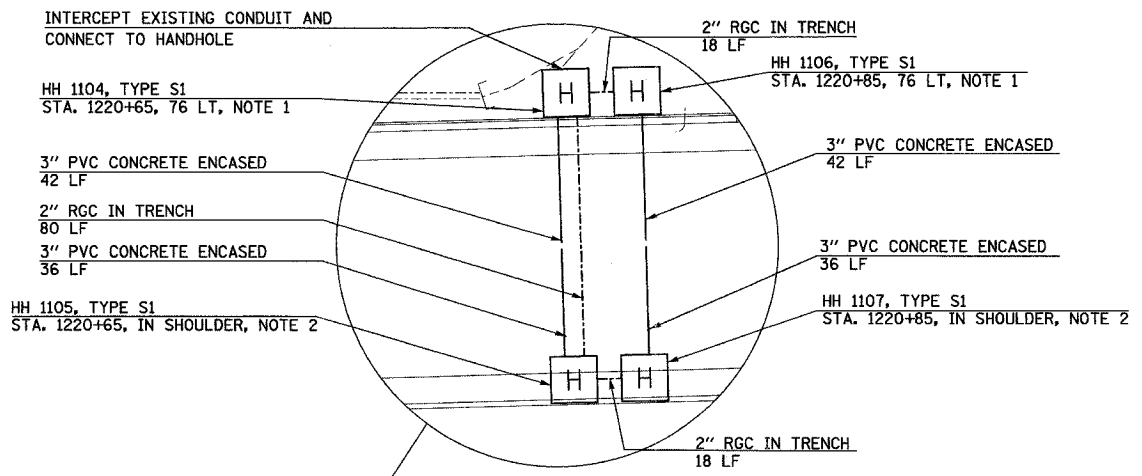
F.A.I. RTE.	SECTION	COUNTY	TOTAL SHEETS	SHEET NO.
94	*	COOK	764	471
STA. 1217+00		TO STA. 1230+00		
FED. ROAD DIST. NO.		ILLINOIS FED. AID PROJECT		
(1516.1, 1717, 1818) R-5		62593		



NOTES:

1. REFER TO SHEETS EI-103 AND EI-106 FOR HANDHOLE DETAILS.
2. REFER SHEET EI-110 FOR HANDHOLE DETAIL.

J:\V\5\dgn\10217\530_dh-11-c2.sht



MATCH LINE STA. 1217+00
SEE SHEET EI-10

MATCH LINE STA. 1230+00
SEE SHEET EI-12



23/EI-11

SINGH 300 W. ADAMS ST.
CHICAGO, IL 60606
SINGH & ASSOCIATES, INC. TEL: (312) 629-0240
CONSULTING ENGINEERS FAX: (312) 629-8449

REVISIONS	
NAME	DATE

ILLINOIS DEPARTMENT OF TRANSPORTATION
F.A.I. 94 (DAN RYAN EXPRESSWAY)

ELECTRICAL INFRASTRUCTURE PLANS
PROPOSED IMPROVEMENTS

SCALE: 1"=50' DRAWN BY: VK
DATE: MARCH 1, 2006 CHECKED BY: TM

2/20/2006 3:54:38 PM