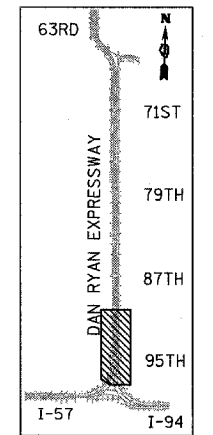
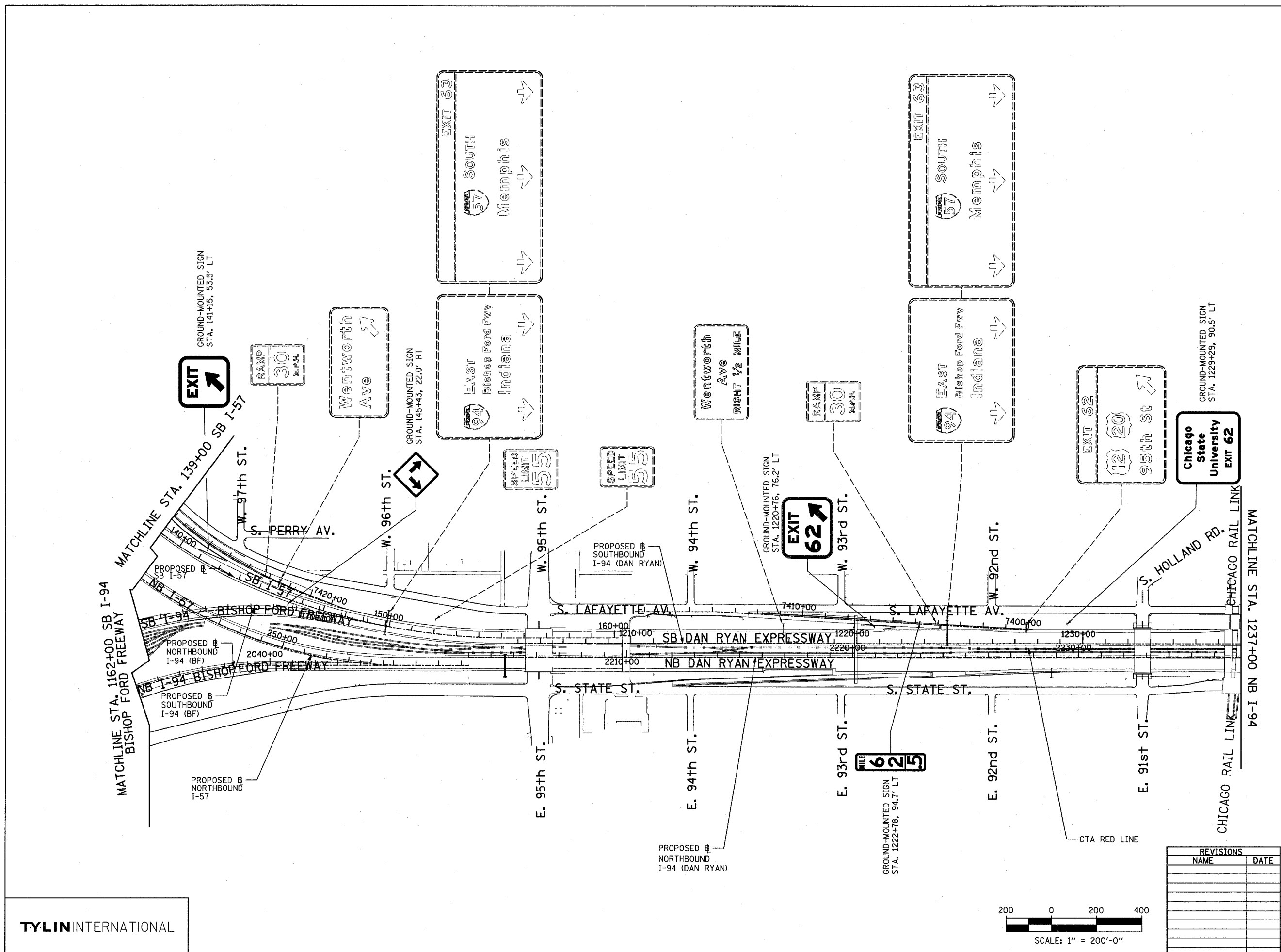


SIGNING LEGEND:

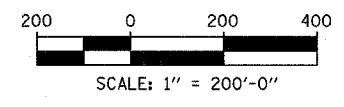
- PROPOSED GROUND MOUNTED SIGN
- PROPOSED OVERHEAD SIGN STRUCTURE - TRUSS
- PROPOSED OVERHEAD SIGN STRUCTURE - BRIDGE MOUNTED
- PROPOSED OVERHEAD SIGN STRUCTURE - CANTILEVER
- EXISTING GROUND MOUNTED SIGN
- EXISTING OVERHEAD SIGN STRUCTURE - TRUSS
- EXISTING OVERHEAD SIGN STRUCTURE - BRIDGE MOUNTED
- EXISTING OVERHEAD SIGN STRUCTURE - CANTILEVER
- PROPOSED SIGN
- EXISTING SIGN



LOCATION MAP



TYLIN INTERNATIONAL



REVISIONS	
NAME	DATE

ILLINOIS DEPARTMENT OF TRANSPORTATION
F.A.I. 94 (DAN RYAN EXPRESSWAY)
PROPOSED SIGNING
STA. 1162+00 (NB I-94 BISHOP FORD FREEWAY)
TO STA. 1237+00 (NB I-94 DAN RYAN EXPRESSWAY)
SHEET 3 OF 5
 SCALE: 1" = 200'
 DATE: MARCH 1, 2006
 DRAWN BY: AMB
 CHECKED BY: TGB