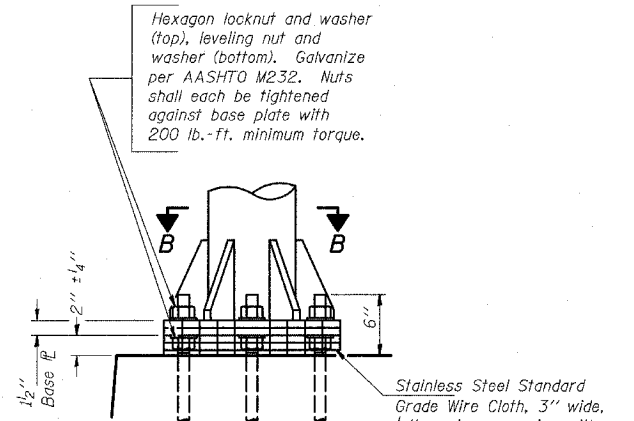


STATE OF ILLINOIS  
DEPARTMENT OF TRANSPORTATION

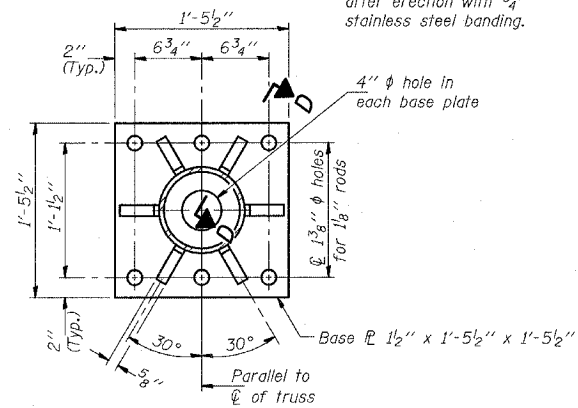
F.A.I. RTE.	SECTION	COUNTY	TOTAL SHEETS	SHEET NO.
94	*	COOK	764	502
STA. 88+60 (SB I-57) TO STA. 1313+00 (SB RYAN)				
STA. 1126+91 (SB FORD)				
FED. ROAD DIST. NO. ILLINOIS FED. AID PROJECT				
* (1516.1, 1717, & 1818) R-5				

62593

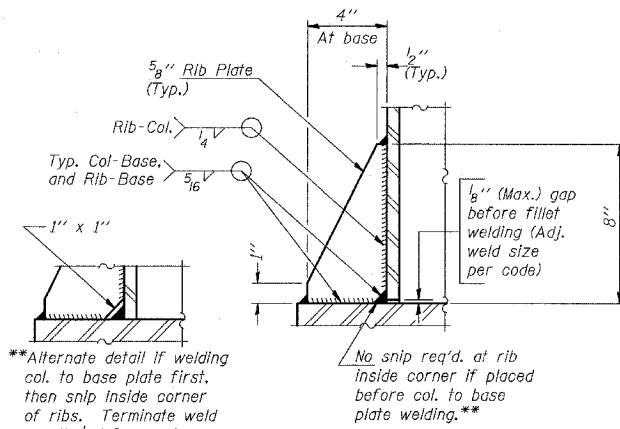


**DETAIL B**

Ribs shall be cut to fit slope of pipe.

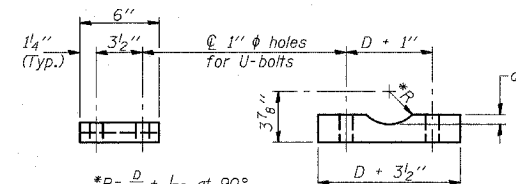


**SECTION B-B**



**SECTION D-D**

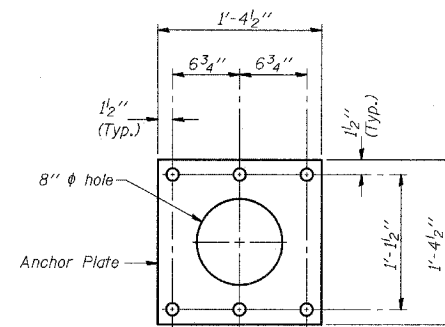
\*\*Alternate detail if welding col. to base plate first, then snip inside corner of ribs. Terminate weld on rib 1/4 inch from snip.



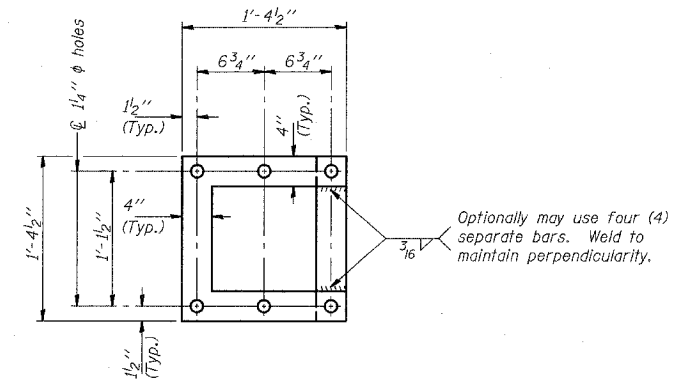
**SADDLE SHIM DETAIL**

ASTM B26 Alloy 356-F  
or  
ASTM B209 Alloy 6061-T651  
(4 required per sign truss)

Truss Chord Nominal Dia.	a
5"	3/4"
5 1/2"	13/16"
6"	7/8"
6 1/2"	15/16"



**ANCHOR ROD DETAIL  
Spread Footing Foundation**

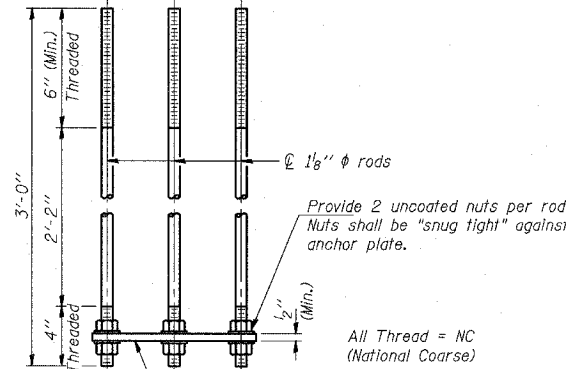


**POSITIONING PLATE(S)**

At each location, provide 1/4 inch thick positioning plate(s) and six (6) additional nuts to be used with leveling nuts to maintain anchor bolts position during concrete placement.

1/4 inch plate and extra nuts become Contractor's property. Cost included in "Drilled Shaft Concrete Foundations".

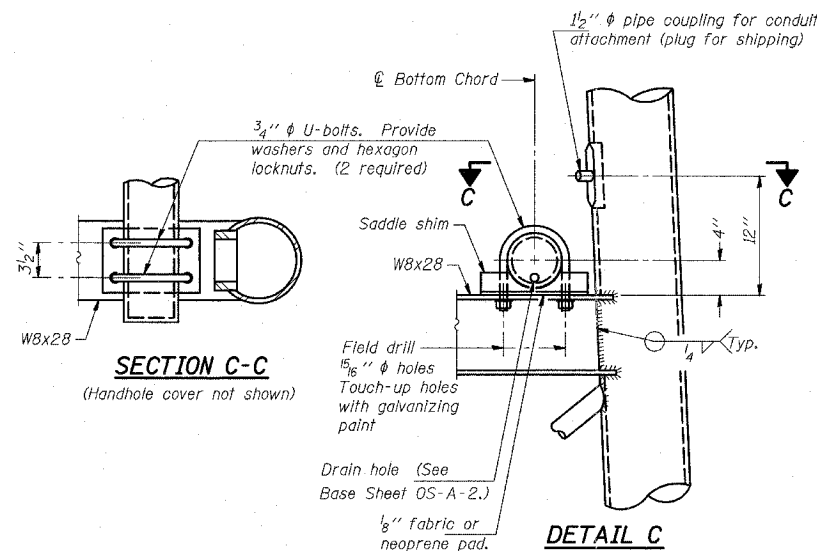
Provide 1 uncoated nut per rod. Deform thread or use chemical thread lock to secure.



**ANCHOR ROD DETAIL  
Drilled Shaft Foundation**

Anchor rods shall conform to AASHTO M314 Grade 36 or 55 and meet Charpy V-Notch (CVN) energy of 15 lb.-ft. at 40 degrees F. Galvanize upper 12 inches per AASHTO M232. No welding shall be permitted on rods.

**TYPE I-A TRUSS  
8" PH PIPE SUPPORT FRAME DETAILS**



**SECTION C-C**

**DETAIL C**

NUMBER	REVISION	DATE

DESIGNED -	20
CHECKED -	EXAMINED
DRAWN -	PASSED
CHECKED -	

OS-A-4A 11/1/2002

TYLIN INTERNATIONAL

REVISIONS	
NAME	DATE

ILLINOIS DEPARTMENT OF TRANSPORTATION  
F.A.I. 94 (DAN RYAN EXPRESSWAY)

OVERHEAD SIGN STRUCTURES  
SUPPORT FRAME DETAILS  
ALUMINUM TRUSS

SCALE: AS NOTED  
DATE: MARCH 1, 2006

DRAWN BY: AMB  
CHECKED BY: TB