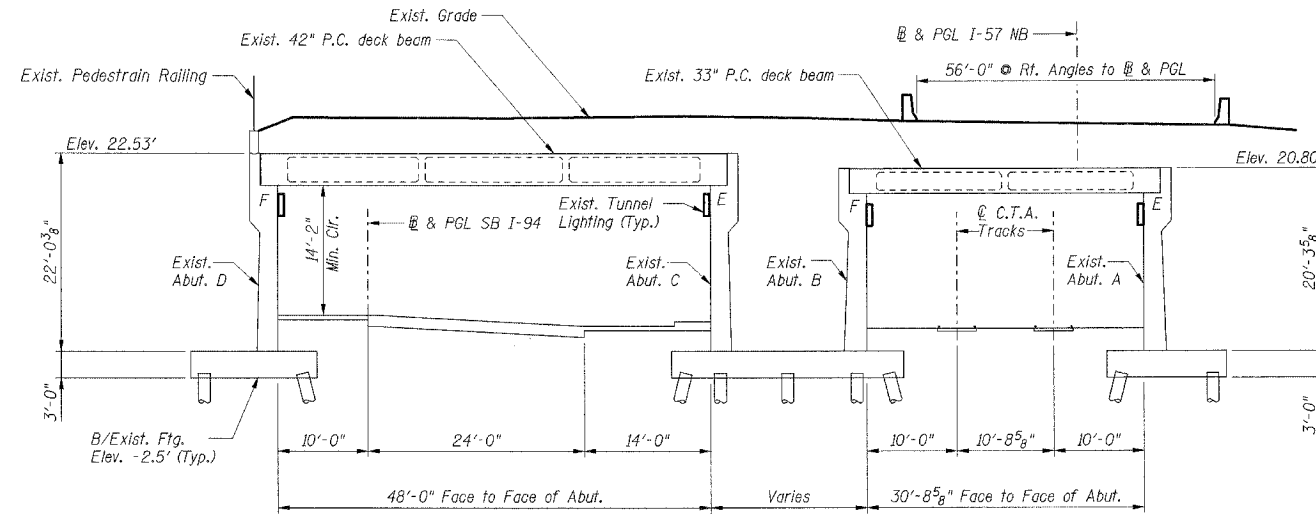


F.A.I. RTE.	SECTION	COUNTY	TOTAL SHEETS	SHEET NO.
57		COOK	764	508
STA.		TO STA.		
FED. ROAD DIST. NO. 1		ILLINOIS FED. AID PROJECT		

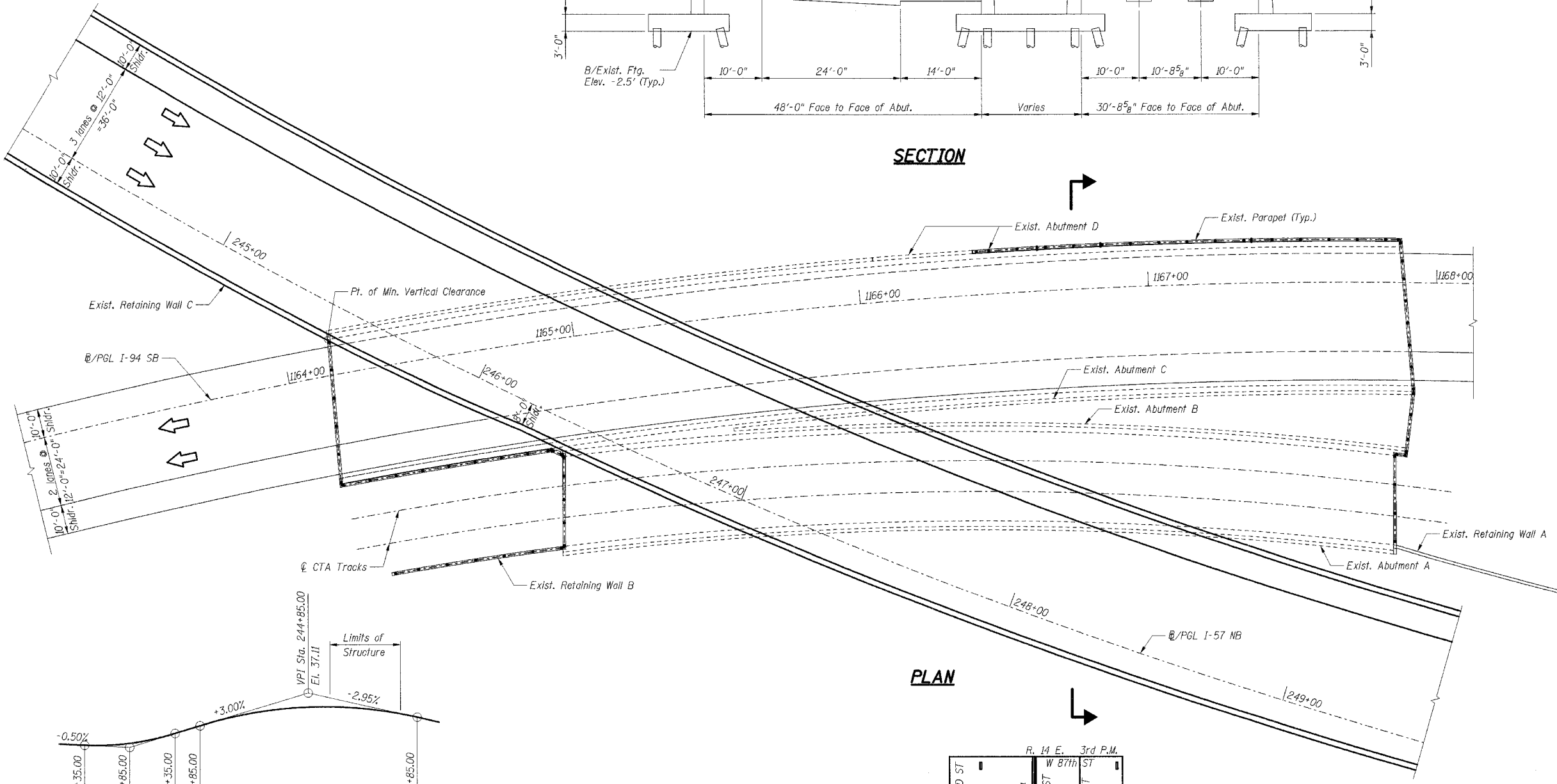
CONTRACT NO. 62593  
SECTION (1516.1, 1717, & 1818) R-5

**EXISTING STRUCTURE**

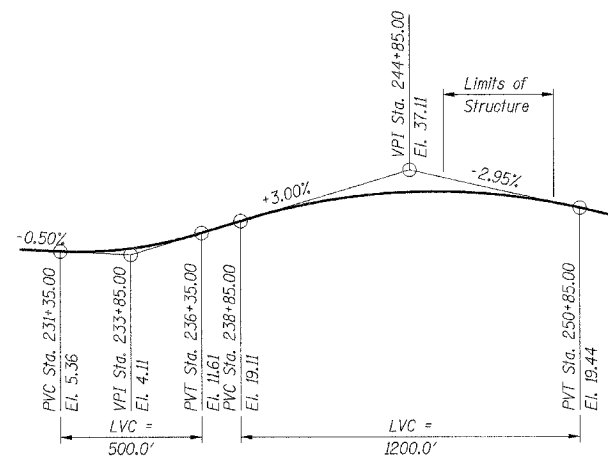
Structure No. 016-0073 was built in 1960 as F.A.I. 57 and C.T.A. over southbound F.A.I. 90, I-94, and the C.T.A. The structure consists of a 2 cell tunnel containing C.T.A. tracks in the eastern cell and southbound I-94 in the western cell. The substructure consists of reinforced concrete abutments and a pier founded on concrete piles which support a precast concrete deck beam roof system. Traffic is to be maintained using staged construction during rehabilitation.



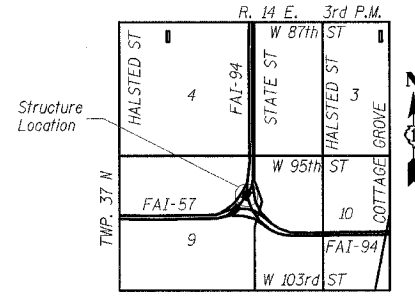
**SECTION**



**PLAN**



**PROFILE GRADE NB INTERSTATE 57**



**LOCATION MAP**

**DESIGN SPECIFICATIONS**

2002 AASHTO Standard Specifications for Highway Bridges

**DESIGN LOADING**

Roadway Live Load: HS20-44 & Aft.

**DESIGN STRESSES**

Existing Construction  
Cast in Place Concrete, f'c = Unknown  
Reinforcement, fy = 40,000 psi  
Precast Concrete, f'c = Unknown  
Prestressing Steel, f's = 250,000 psi

**SCOPE OF WORK**

The work under this contract includes cleaning the abutment and retaining wall drainage systems, removing and repairing loose and unsound concrete from exposed surfaces of the abutments, and removing and repairing loose and unsound concrete from the underside of the precast deck beams and the cast in place edge beams. Repairs to the top portions of the structure have been completed in another contract.

**TOTAL BILL OF MATERIAL**

Item	Unit	Total
Formed Concrete Repair *	Sq Ft	281
Epoxy Crack Sealing	Foot	41
Cleaning Drainage System	L Sum	1
Concrete Sealing	Sq Yd	2,130
Cored Drain Holes	Each	64
Polymer Modified Portland Cement Mortar	Sq Ft	27.0
Protect and maintain Existing IDOT Tunnel Lighting System	L Sum	1
Protect and maintain Existing CTA Tunnel Lighting System	L Sum	1

\*Depth less than or equal to 5"

**GENERAL NOTES:**

Plan dimensions and details relative to existing structures have been taken from existing plans and are subject to nominal construction variations. It shall be the Contractor's responsibility to verify such dimensions and details in the field and make necessary approved adjustments prior to construction or ordering of materials. Such variations shall not be cause for additional compensation for a change in the scope of the work, however, the Contractor will be paid for the quantity actually furnished at the unit price bid for the work.

**INDEX OF SHEETS**

- S-001 GENERAL PLAN AND ELEVATION
- S-002 DECK PLAN I
- S-003 DECK PLAN II
- S-004 ABUTMENT A REPAIRS I
- S-005 ABUTMENT A REPAIRS II
- S-006 ABUTMENT B REPAIRS I
- S-007 ABUTMENT B REPAIRS II
- S-008 ABUTMENT C REPAIRS I
- S-009 ABUTMENT C REPAIRS II
- S-010 ABUTMENT D REPAIRS I
- S-011 ABUTMENT D REPAIRS II

SHT. S-001

REVISIONS	
NAME	DATE

ILLINOIS DEPARTMENT OF TRANSPORTATION  
F.A.I. ROUTE 57 (INTERSTATE 57) OVER  
F.A.I. ROUTE I-94 SB & CTA TRACKS-BRIDGE REPAIRS  
SN 016-0073  
COOK COUNTY  
SECTION (1516.1, 1717, & 1818) R-5  
GENERAL PLAN &  
ELEVATION

DATE: 03/01/06  
DRAWN BY: VV  
CHECKED BY: RDS



TENG & ASSOCIATES, INC.  
ENGINEERS/ARCHITECTS/PLANNERS  
225 N. MICHIGAN AVE., CHICAGO, IL 60601  
TELEPHONE 312.618.0000

S:\REPRODUCTION\DRG\PROJECTS\016-0073\016-0073-001\016-0073-001-001.DWG  
 2-22-2006 14:35  
 V:\S-001\PROJ\016-0073\016-0073-001\016-0073-001-001.DWG  
 11/10/06 10:00 AM  
 V:\S-001\PROJ\016-0073\016-0073-001\016-0073-001-001.DWG  
 11/10/06 10:00 AM  
 V:\S-001\PROJ\016-0073\016-0073-001\016-0073-001-001.DWG  
 11/10/06 10:00 AM  
 V:\S-001\PROJ\016-0073\016-0073-001\016-0073-001-001.DWG  
 11/10/06 10:00 AM