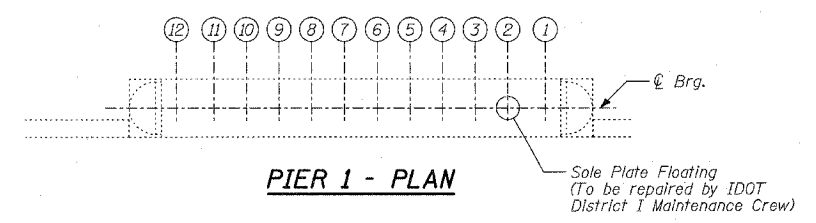
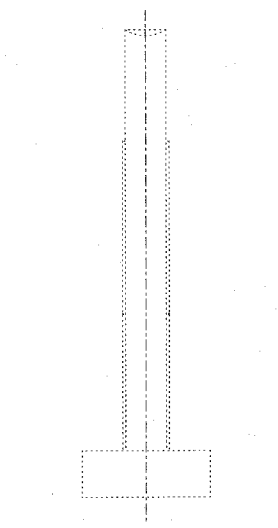


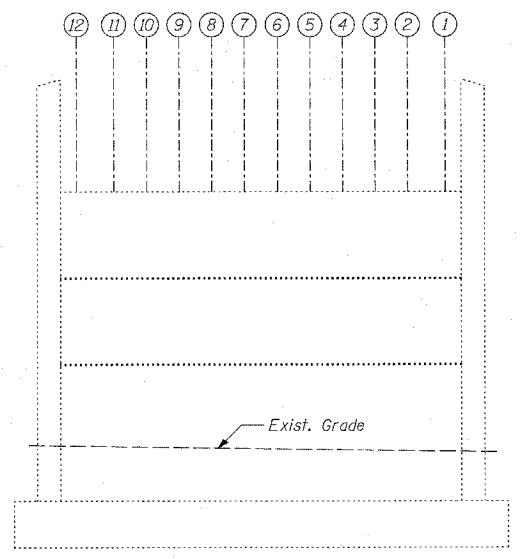
**PIER 1 - ELEVATION**  
(Looking East)



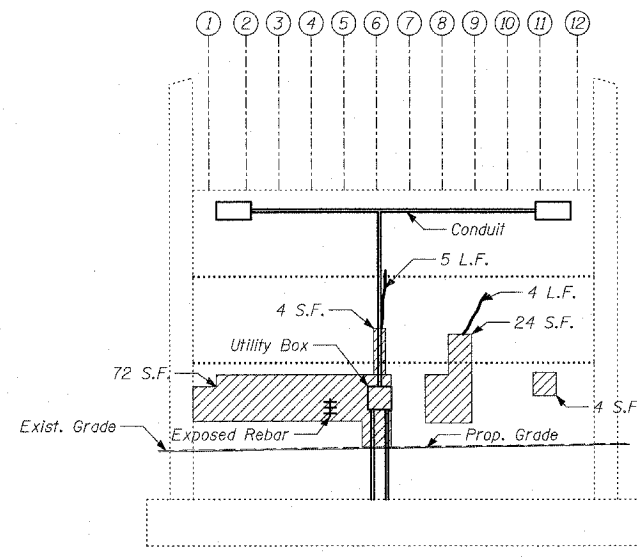
**PIER 1 - PLAN**



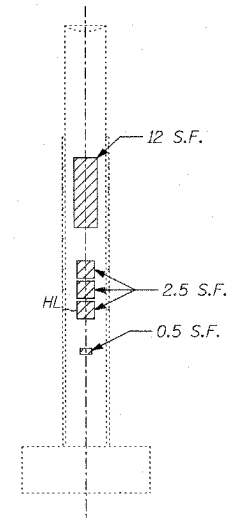
**PIER 2 - END VIEW**  
(Looking North)



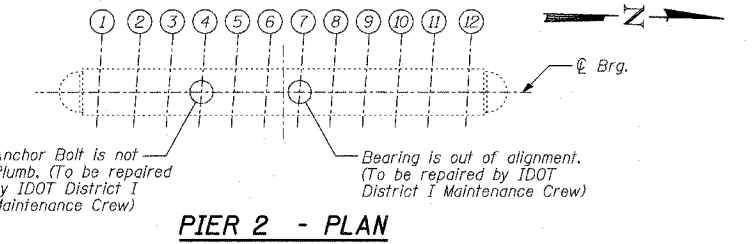
**PIER 2 - ELEVATION**  
(Looking East)



**PIER 2 - ELEVATION**  
(Looking West)



**PIER 2 - END VIEW**  
(Looking South)



**PIER 2 - PLAN**

**LEGEND**

- Formed Concrete Repair (Depth = < 5")
- Epoxy Crack Sealing
- Hair Line Crack

**BILL OF MATERIAL**

ITEM	UNIT	TOTAL
Epoxy Crack Sealing	FOOT	21
Formed Concrete Repair (Depth = < 5")	SQ FT	141

**NOTES:**

1. The Contractor shall temporarily relocate the existing lighting fixtures (conduits, wiring and junction box) interfering with the formed concrete repairs and reinstall them after completing the formed concrete repairs.
2. The Contractor shall inform the Engineer 5 days in advance of relocating fixtures in the areas of formed concrete repairs. The cost of temporarily relocating and reinstalling the lighting fixtures and any associated labor and equipment shall be included in the cost of "Formed Concrete Repairs."

**TYLIN INTERNATIONAL**

REVISIONS	
NAME	DATE

ILLINOIS DEPARTMENT OF TRANSPORTATION  
**F.A.I. 94 (DAN RYAN EXPRESSWAY)**  
**SUBSTRUCTURE REPAIR**  
**FOR NORFOLK SOUTHERN**  
**EXISTING PIER 1 & PIER 2**

S.N. 016-0144      DESIGNED BY: MAF, DJR  
SCALE: N.T.S.      DRAWN BY: MAF, DJR  
DATE: MARCH 1, 2006      CHECKED BY: MI