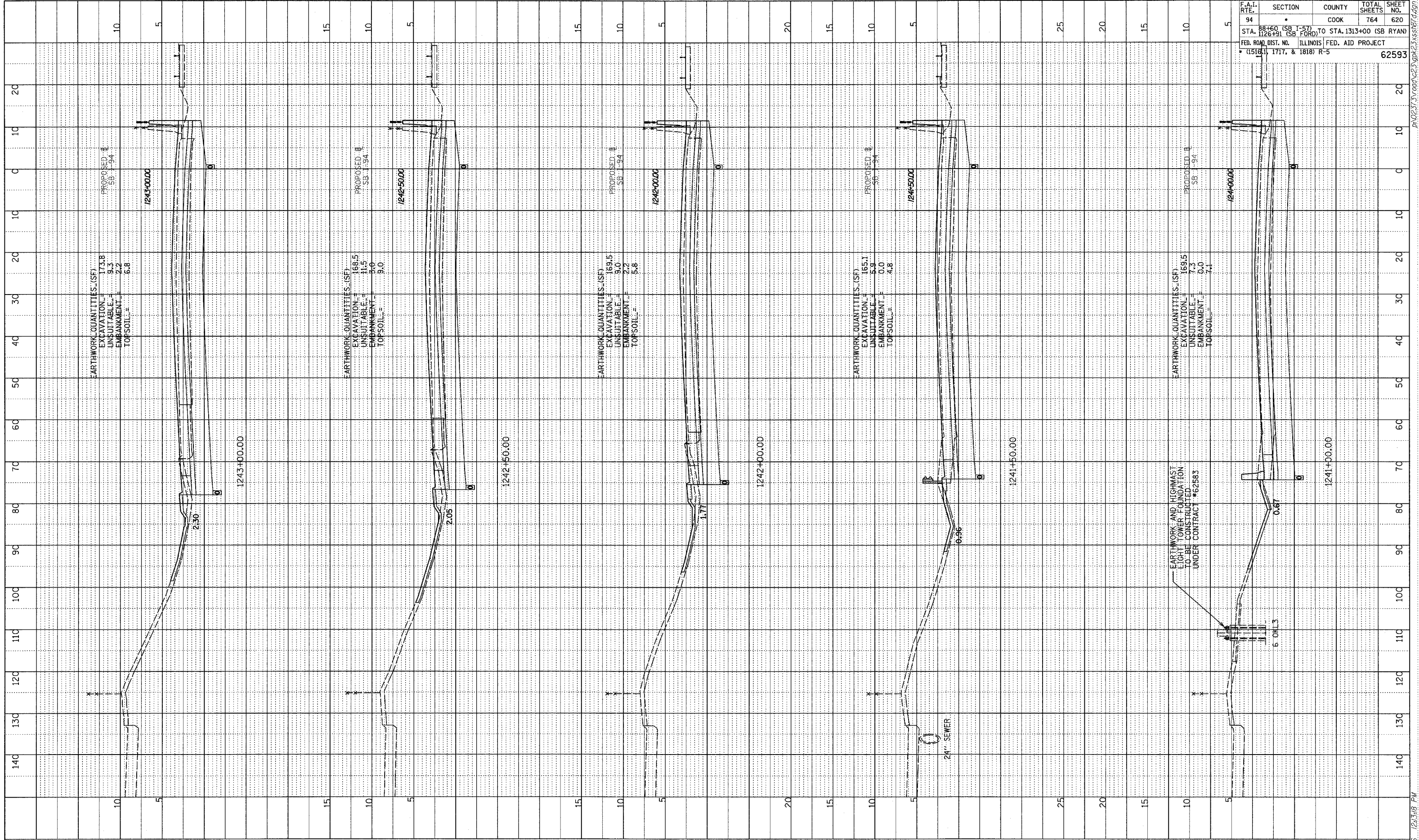
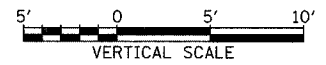
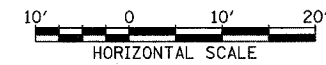


PROFILE SURVEYED  
 PLOTTED  
 NOTE BOOK  
 NO. \_\_\_\_\_  
 STRUCTURE NOTATIONS CHFD

F.A.I. RTE.	SECTION	COUNTY	TOTAL SHEETS	SHEET NO.
94	86+60 (SB Y-57) (SB FORD) TO STA. 1313+00 (SB RYAN)	COOK	764	620
FED. ROAD DIST. NO. ILLINOIS FED. AID PROJECT				62593
1717, & 1818) R-5				



TYLIN INTERNATIONAL



I-94 SOUTHBOUND (DAN RYAN EXPWY)  
 STA. 1241+00 TO STA. 1243+00

02/27/2006 12:38 PM P:\0231\road\23\pk23\ss1817.dgn