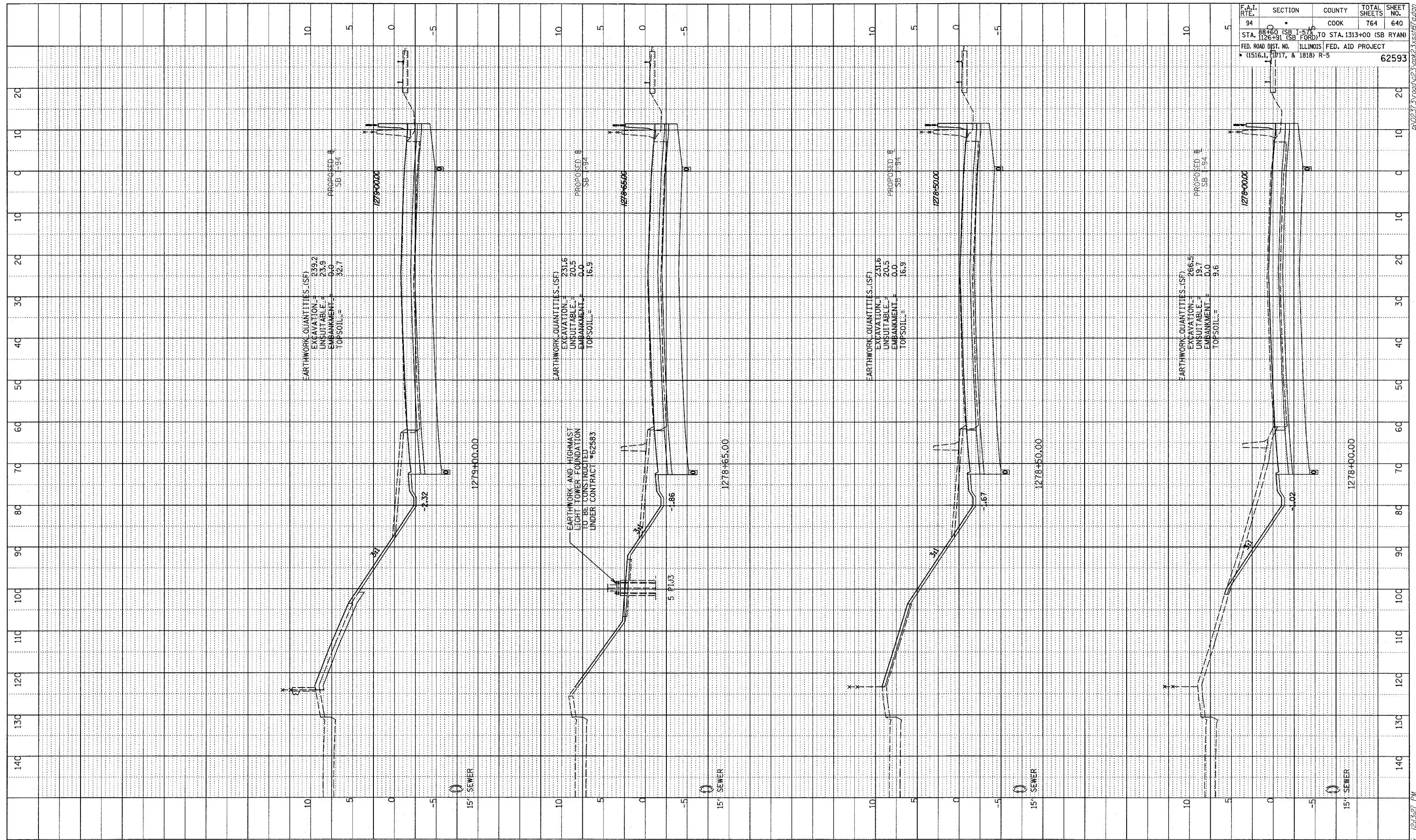
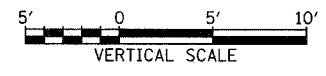
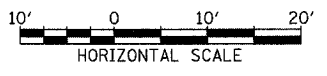


PROF-ILL SURVEYED
 GRADES CHECKER
 B.M. NOTED
 STRUCTURE NOTATION CIRC
 NO.

F.A.I. RTE.	SECTION	COUNTY	TOTAL SHEETS	SHEET NO.
94	SB I-570	COOK	764	640
STA. 1126+91 (SB FORD) TO STA. 1313+00 (SB RYAN)				
FED. ROAD DIST. NO. ILLINOIS FED. AID PROJECT				
• (1516.1, 1117, & 1818) R-5				
				62593



TYLIN INTERNATIONAL



I-94 SOUTHBOUND (DAN RYAN EXPWY)
 STA. 1278+00 TO STA. 1279+00

02/27/2006 12:52:27 PM