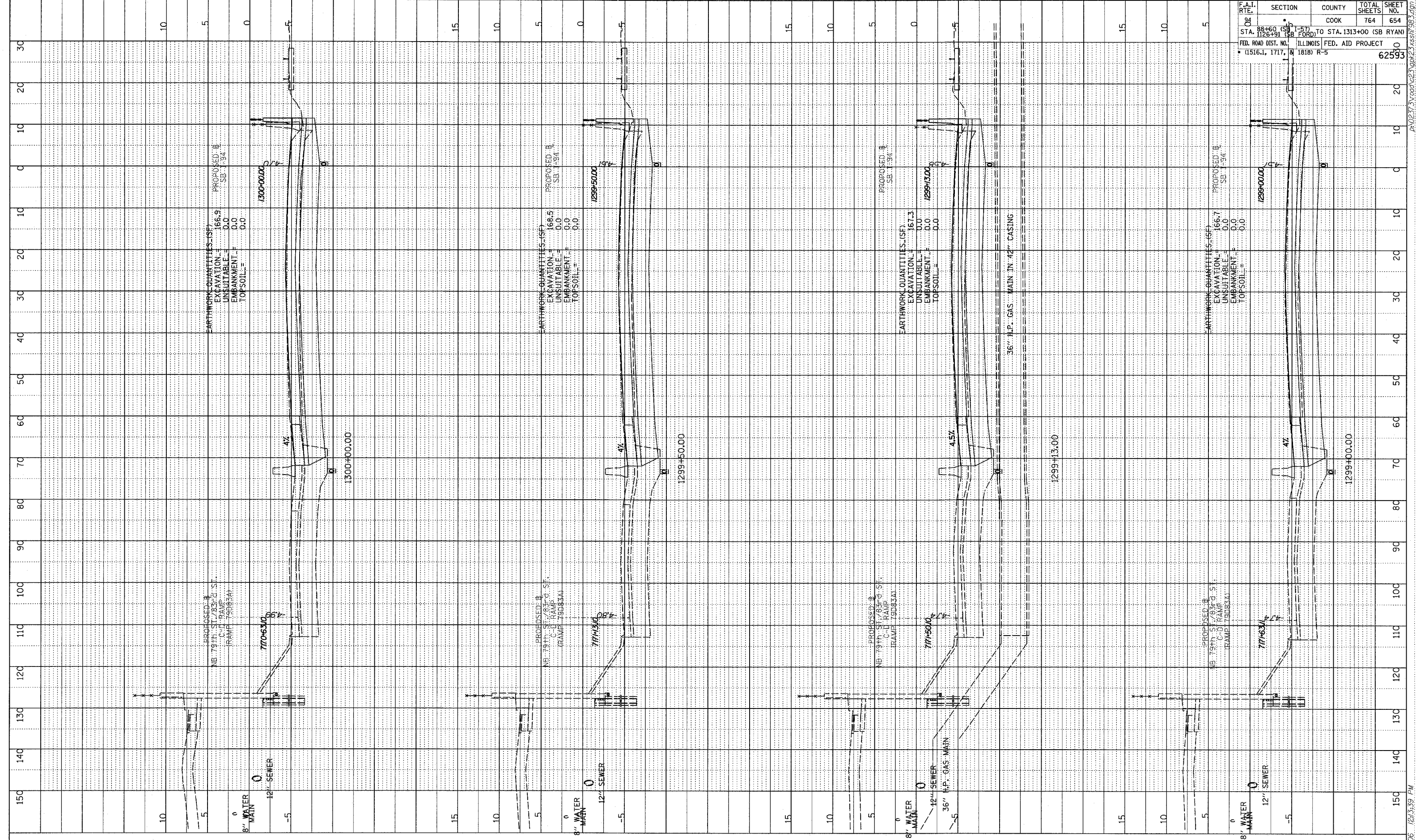


PROFILE SURVEYED: \_\_\_\_\_ DATE: \_\_\_\_\_  
 PLOTTED: \_\_\_\_\_  
 NOTE BOOK NO. \_\_\_\_\_  
 STRUCTURE NOTATIONS: \_\_\_\_\_

F.A.I. RTE.	SECTION	COUNTY	TOTAL SHEETS	SHEET NO.
94	SB	COOK	764	654
STA. 88+60 (SB I-57) TO STA. 1313+00 (SB RYAN)				
FED. ROAD DIST. NO. 11516.1, 1717, 1818				
ILLINOIS FED. AID PROJECT R-5				
				62593



TYLIN INTERNATIONAL

I-94 SOUTHBOUND (DAN RYAN EXPWY)  
 STA. 1299+00 TO STA. 1300+00

P:\02\27\2006\121339.dgn 02/27/2006 12:33:39 PM