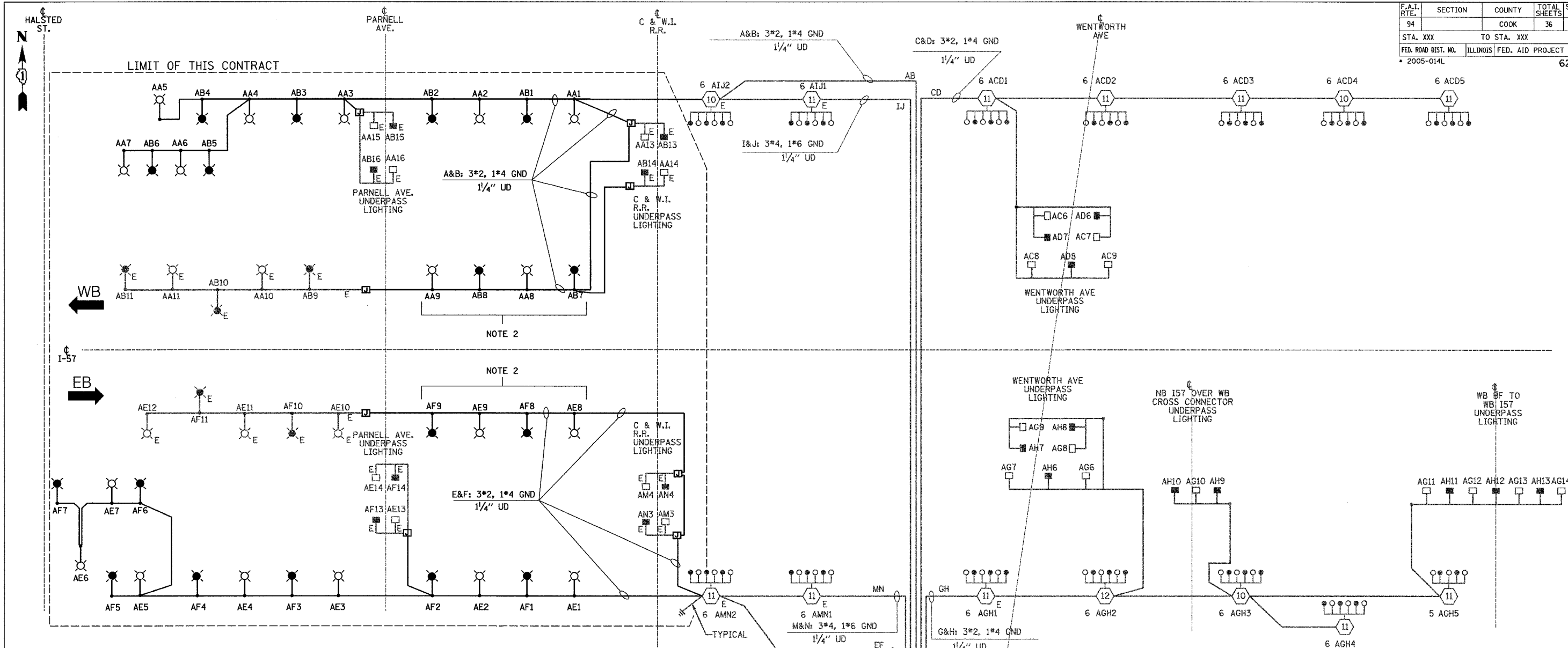
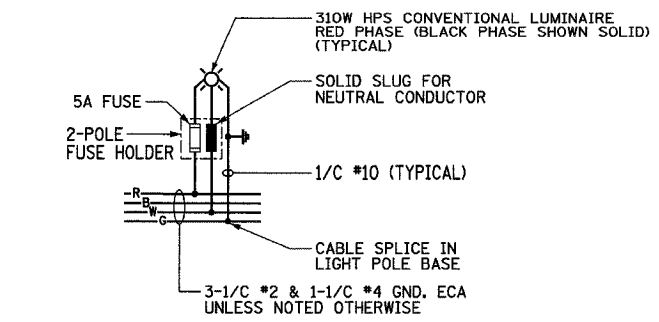


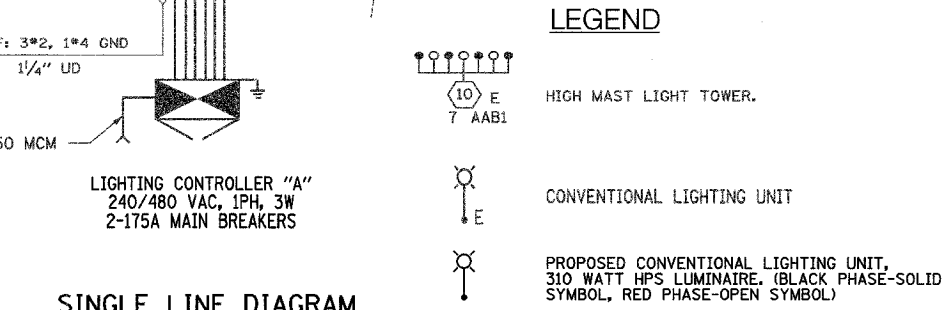
F.A.I. RTE.	SECTION	COUNTY	TOTAL SHEETS	SHEET NO.
94		COOK	36	30
STA. XXX		TO STA. XXX		
FED. ROAD DIST. NO.	ILLINOIS FED. AID PROJECT			
2005-014L			62937	



CIRCUIT	RED PHASE		BLACK PHASE		
	AMPS	WATTS	AMPS	WATTS	
A	20.3	4,872	B	20.3	4,872
C			D		
E	22.0	5,280	F	20.3	4,872
G			H		
I			J		
K			L		
M			N		
O			P		
TOTAL			TOTAL		



TYPICAL CONVENTIONAL LIGHTING UNIT WIRING DIAGRAM
NOT TO SCALE



SINGLE LINE DIAGRAM LIGHTING CONTROLLER "A"

- NOTES:
- UNLESS NOTED OTHERWISE ALL ITEMS AND WORK SHOWN IN HEAVY LINE WEIGHT ON THIS DRAWING ARE PROPOSED NEW ITEMS OF WORK.
 - DO NOT PROVIDE BREAKAWAY TRANSFORMER BASE FOR THESE POLES.

REVISIONS	
NAME	DATE

ILLINOIS DEPARTMENT OF TRANSPORTATION
F.A.I. 94 (DAN RYAN EXPRESSWAY)

SINGLE LINE DIAGRAM LIGHTING CONTROLLER "A"

SCALE: NOT TO SCALE DRAWN BY: VG
DATE: JANUARY 13, 2006 CHECKED BY: TM

SINGH 300 W. ADAMS ST.
CHICAGO, IL 60606
SINGH & ASSOCIATES, INC. TEL: (312) 629-0240
CONSULTING ENGINEERS FAX: (312) 629-8449

J:\NVS\ogn\1021753b\01_2.dwg 1:38:53 PM 2/4/2006