

STATE OF ILLINOIS  
DEPARTMENT OF TRANSPORTATION  
DIVISION OF HIGHWAYS

**PROPOSED  
HIGHWAY PLANS**

IDOT /IHPA STATEWIDE  
DAVID DAVIS MANSION STATE HISTORIC SITE  
SECTION PARK ROADS 2016-03  
PARKING LOT AND ROADWAY IMPROVEMENT  
McLEAN COUNTY

F.A. RTE.	SECTION	COUNTY	TOTAL SHEETS	SHEET NO.
		McLEAN	9	1
		ILLINOIS	CONTRACT NO. 46404	

C-30-003-16

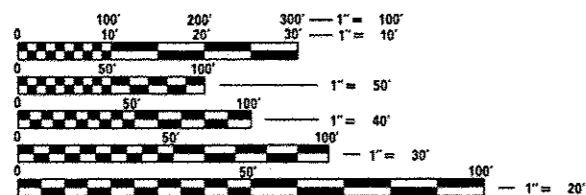
D-5

FOR INDEX OF SHEETS, SEE SHEET NO. 1

- 1 COVER SHEET
- 2 GENERAL NOTES
- 3 SUMMARY OF QUANTITIES
- 4 SCHEDULE OF QUANTITIES
- 5-6 PLAN SHEETS
- 7-9 DETAILS SHEETS

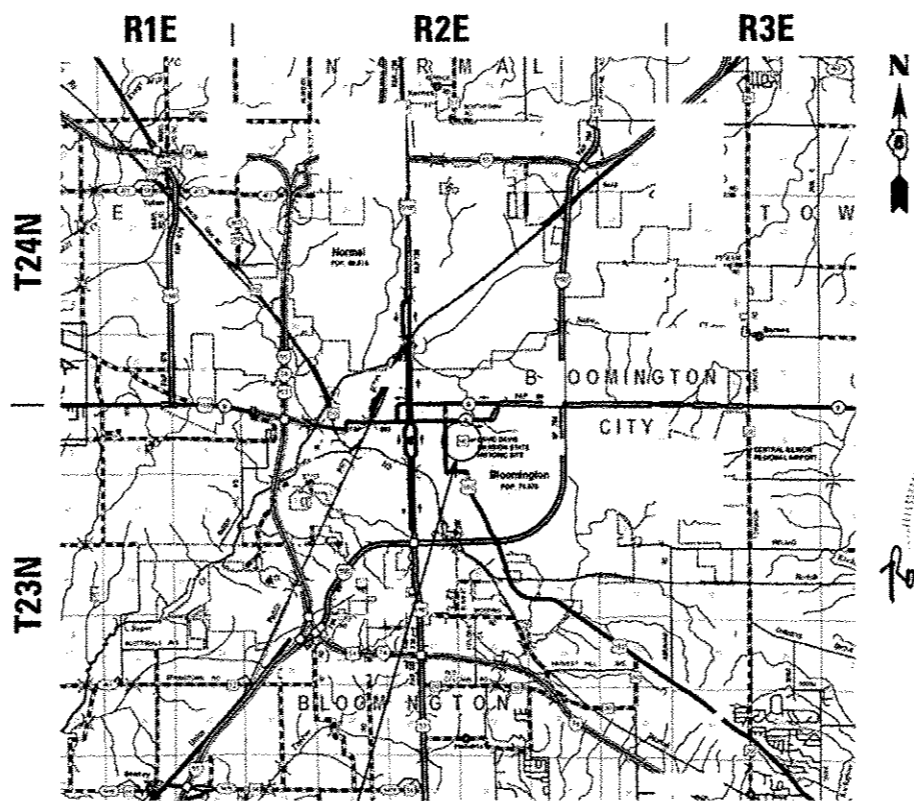
**STANDARDS**

- 000001-06 STANDARD SYMBOLS, ABBREVIATIONS, AND PATTERNS
- 001001-02 AREAS OF REINFORCEMENT BARS
- 001006 DECIMAL OF AN INCH AND FOOT
- 280001-07 TEMPORARY EROSION CONTROL SYSTEM
- 602601-04 PRECAST REINFORCED CONCRETE FLAT SLAB TOP
- 604001-04 FRAME AND LIDS TYPE 1
- 701901-05 TRAFFIC CONTROL DEVICES
- 720001-01 SIGN PANEL MOUNTING DETAILS
- 720006-04 SIGN PANEL ERECTION DETAILS
- 720011-01 METAL POSTS FOR SIGNS, MARKERS, AND DELINEATORS
- 729001-01 APPLICATIONS OF TYPES A & B METAL POSTS (FOR SIGNS & MARKERS)
- 780001-05 TYPICAL PAVEMENT MARKINGS

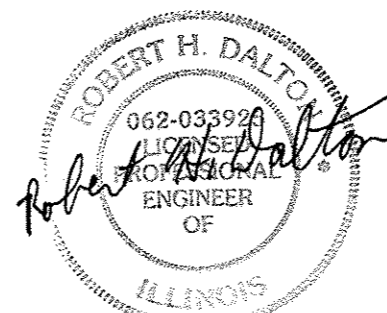


FULL SIZE PLANS HAVE BEEN PREPARED USING STANDARD ENGINEERING SCALES. REDUCED SIZED PLANS WILL NOT CONFORM TO STANDARD SCALES. IN MAKING MEASUREMENTS ON REDUCED PLANS, THE ABOVE SCALES MAY BE USED.

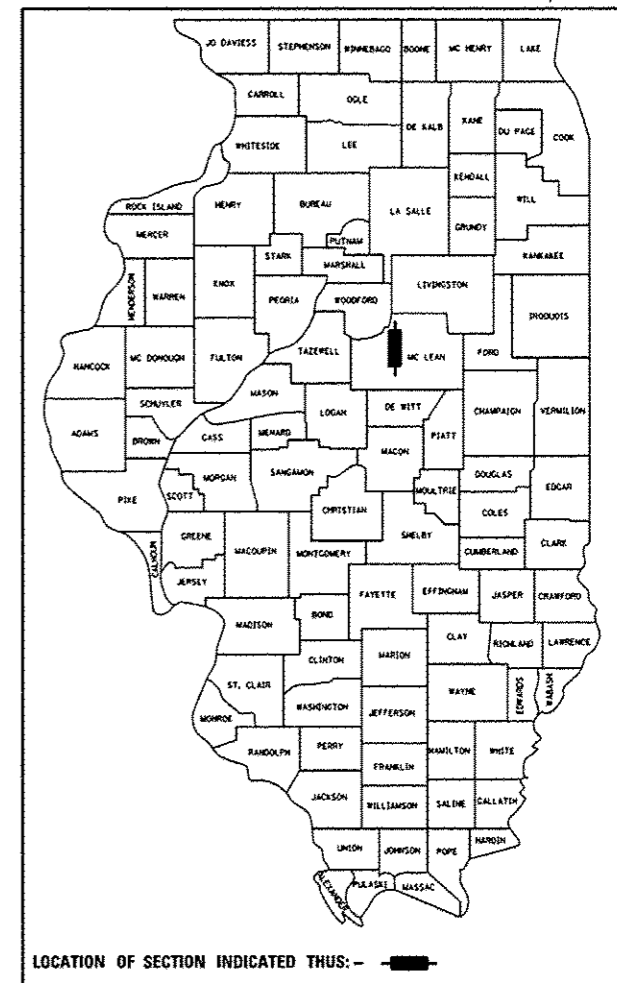
J.U.L.I.E.  
JOINT UTILITY LOCATION INFORMATION FOR EXCAVATION  
1-800-892-0123  
OR 811



DAVID DAVIS MANSION



*Robert H. Dalton*  
3/8/16  
Exp. 11/30/17



STATE OF ILLINOIS  
DEPARTMENT OF TRANSPORTATION  
DIVISION OF HIGHWAYS

SUBMITTED 3-8-2016

*Angela*  
DEPUTY DIRECTOR OF HIGHWAYS, REGION ENGINEER

*Maureen M. Addis, P.E.*  
ENGINEER OF DESIGN AND ENVIRONMENT

*Maureen M. Addis, P.E.*  
DIRECTOR OF HIGHWAYS, CHIEF ENGINEER

**PRINTED BY THE AUTHORITY  
OF THE STATE OF ILLINOIS**

PROJECT ENGINEER: VINCE MADONIA (217) 782-4074

CONTRACT NO. 46404

**APPLICATION  
RATES**

COVER COAT AND SEAL COAT AGGREGATES:  
25 LBS/SQ YD

BITUMINOUS PRIME COAT, COVER COAT,  
AND SEAL COAT:  
0.5 GAL/SQ YD

**LEGEND**

- |     |                         |   |                             |
|-----|-------------------------|---|-----------------------------|
| ←   | PROPOSED STORM SEWER    | ⊞ | EXISTING POWER POLE         |
| —   | EXISTING STORM SEWER    | ⊙ | EXISTING FIRE HYDRANT       |
| --- | EXISTING DITCH          | ○ | EXISTING CATCH BASIN        |
| ▭   | PROPOSED INLET          | ⊕ | EXISTING INLET              |
| ⊞   | EXISTING SIGN           | ⊞ | EXISTING MANHOLE            |
| ⊞   | EXISTING LIGHT POLE     | △ | EXISTING FLARED END SECTION |
| ⊞   | EXISTING WATER VALVE    | ○ | EXISTING BOLLARD            |
| ⊞   | EXISTING DECIDUOUS TREE | ⊞ | EXISTING JUNCTION BOX       |

**GENERAL NOTES**

- 1) SPECIFICATIONS SHALL BE THE "STANDARD SPECIFICATIONS FOR ROAD AND BRIDGE CONSTRUCTION" ADOPTED APRIL 1, 2016.
- 2) ALL ELEVATIONS ARE REFERENCED TO ELEVATIONS ESTABLISHED BY VASCONCELLES ENGINEERING CORP.
- 3) WHERE SECTION OR SUBSECTION MONUMENTS ARE ENCOUNTERED, THE ENGINEER SHALL BE NOTIFIED BEFORE SUCH MONUMENTS ARE REMOVED. THE CONTRACTOR SHALL PROTECT AND CAREFULLY PRESERVE ALL PROPERTY MARKERS AND MONUMENTS UNTIL THE OWNER AND AUTHORIZED SURVEYOR OR AGENT HAS WITNESSED OR OTHERWISE REFERENCED THEIR LOCATION. IF THE ENGINEER DECIDES TO HAVE THE CONTRACTOR RESET THE MONUMENT, THIS WORK WILL BE PAID FOR IN ACCORDANCE WITH ARTICLE 109.04 OF THE STANDARD SPECIFICATIONS FOR HIGHWAY AND BRIDGE CONSTRUCTION.
- 4) THE CONTRACTOR SHALL CONTACT J.U.L.I.E. TO HAVE PUBLIC AND PRIVATE UTILITIES LOCATED PRIOR TO ANY CONSTRUCTION.
- 5) THE CONTRACTOR SHALL BE RESPONSIBLE FOR PROTECTING UTILITY PROPERTY FROM CONSTRUCTION OPERATIONS AS OUTLINED IN ARTICLE 107.26 OF THE STANDARD SPECIFICATIONS. THE J.U.L.I.E. NUMBER IS (800) 892-0123. A MINIMUM OF 48 HOURS ADVANCE NOTICE IS REQUIRED. SEE SPECIAL PROVISIONS FOR STATUS OF UTILITIES, WITH UTILITY COMPANIES LISTED.
- 6) ANY REFERENCE TO THE STANDARDS THROUGHOUT THE PLANS SHALL BE INTERPRETED TO BE THE LATEST STANDARDS OF THE DEPARTMENT AS INCLUDED IN THESE PLANS.
- 7) ALL DETAILS IN THE PLANS SHALL GOVERN CONSTRUCTION OF THIS PROJECT, AND IN CASE OF CONFLICT WITH ANY STANDARD DRAWINGS INCLUDED, THE SAID DETAILS SHALL TAKE PRECEDENCE AND GOVERN.
- 8) EXCESS DIRT FROM CONSTRUCTION OPERATIONS OR UNSUITABLE FILL MATERIAL MUST BE STORED ON SITE AT A LOCATION TO BE DETERMINED BY THE SITE PERSONNEL, MEETING THE REQUIREMENTS OF ARTICLE 202.03.
- 9) THE CONTRACTOR SHALL ASSUME COMPLETE RESPONSIBILITY FOR JOB SITE CONDITIONS DURING THE COURSE OF CONSTRUCTION, INCLUDING SAFETY OF ALL PERSONS AND PROPERTY, THAT THIS REQUIREMENT SHALL APPLY CONTINUOUSLY AND NOT BE LIMITED TO NORMAL WORKING HOURS, AND THAT THE CONTRACTOR SHALL DEFEND, INDEMNIFY, AND HOLD THE OWNER AND THE ENGINEER HARMLESS FROM ANY AND ALL LIABILITY, REAL OR ALLEGED, IN CONNECTION WITH THE PERFORMANCE OF WORK ON THIS PROJECT, EXCEPTING FOR THE LIABILITY ARISING FROM THE SOLE NEGLIGENCE OF THE OWNER OR THE ENGINEER.
- 10) ALL CONSTRUCTION LAYOUT SHALL BE THE RESPONSIBILITY OF THE CONTRACTOR.
- 11) THE FINAL TOP FOUR INCHES OF SOIL IN ANY RIGHT-OF-WAY AREA DISTURBED BY THE CONTRACTOR MUST BE CAPABLE OF SUPPORTING VEGETATION. THE SOIL MUST BE FROM THE A HORIZON (ZERO TO 2' DEEP) OF SOIL PROFILES OF THE LOCAL SOILS. THE COST OF THIS WORK SHALL BE INCLUDED IN THE UNIT PRICES BID AND NO ADDITIONAL COMPENSATION SHALL BE ALLOWED.
- 12) ALL BORROW/WASTE/USE SITES MUST BE APPROVED BY THE DEPARTMENT PRIOR TO REMOVING ANY MATERIAL FROM THE PROJECT OR INITIATING ANY EARTHMOVING ACTIVITIES, INCLUDING TEMPORARY STOCKPILING OUTSIDE THE LIMITS OF CONSTRUCTION.
- 13) THE CONTRACTOR SHALL SEED ALL DISTURBED AREAS WITHIN THE PROJECT LIMITS. SEEDING SHALL BE CLASS I. THIS WORK WILL BE INCLUDED IN THE CONTRACT UNIT PRICE PER CU YD FOR "EARTH EXCAVATION".
- 14) FERTILIZER SHALL BE APPLIED TO ALL DISTURBED AREAS AND INCORPORATED INTO THE SEEDBED PRIOR TO SEEDING OR PLACEMENT OF SOD AT THE RATE SPECIFIED IN SECTIONS 250 AND 252 OF THE STANDARD SPECIFICATIONS. THIS WORK SHALL BE INCLUDED IN THE COST OF "EARTH EXCAVATION".
- 15) MULCH METHOD II SHALL BE APPLIED OVER ALL SEEDDED AREAS. THIS SHALL BE INCLUDED IN THE COST OF "EARTH EXCAVATION".
- 16) MIXTURE COMPOSITION FOR "INCIDENTAL HOT-MIX ASPHALT SURFACING" SHALL BE IL-9.5, C OR D.

FILE NAME *	USER NAME * br1am	DESIGNED -	REVISED -	<b>STATE OF ILLINOIS DEPARTMENT OF TRANSPORTATION</b>	<b>GENERAL NOTES</b>		F.A. RTE.	SECTION	COUNTY	TOTAL SHEETS	SHEET NO.	
S:\CAD Drawings\CAD Drawings\CAD Drawings\250\250-801-AD David Davis Topo\sh1.02.01	DRAM	Sum Over.dgn	REVISED -		<b>DAVID DAVIS MANSION HISTORIC SITE</b>				MCLEAN	9	2	
PLOT SCALE = 48.0000' / in.	CHECKED -	REVISED -	REVISED -		SCALE:	SHEET	OF	SHEETS	STA.	TO STA.	CONTRACT NO. 46404	
Default	PLOT DATE = 3/7/2016	DATE -	REVISED -		ILLINOIS FED. AID PROJECT							

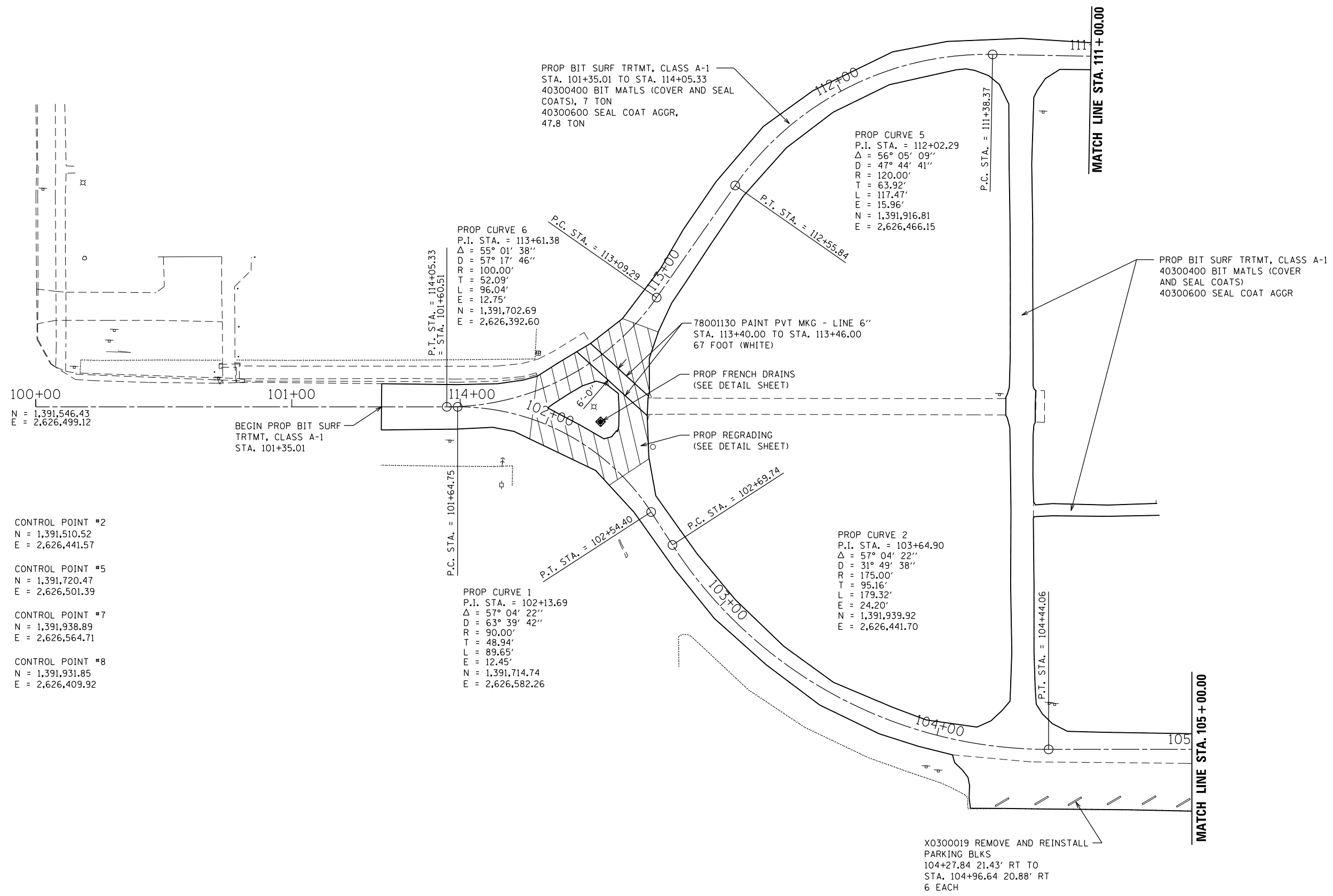
CODE NO.	ITEM	UNIT	TOTAL QUANTITY	CONSTR. CODE
				ROADWAY
				100% STATE 0005
20200100	EARTH EXCAVATION	CU YD	14	14
28000500	INLET AND PIPE PROTECTION	EACH	1	1
35101400	AGGREGATE BASE COURSE, TYPE B	TON	4	4
35101800	AGGREGATE BASE COURSE, TYPE B 6"	SQ YD	84	84
40300200	BITUMINOUS MATERIALS (PRIME COAT)	TON	0.7	0.7
40300400	BITUMINOUS MATERIALS (COVER AND SEAL COATS)	TON	7	7
40300500	COVER COAT AGGREGATE	TON	2.4	2.4
40300600	SEAL COAT AGGREGATE	TON	48	48
40800050	INCIDENTAL HOT-MIX ASPHALT SURFACING	TON	1	1
60100080	FRENCH DRAINS	CU YD	12	12
67100100	MOBILIZATION	L SUM	1	1
* 72000100	SIGN PANEL, TYPE 1	SQ FT	2	2
* 72900100	METAL POST, TYPE A	FOOT	9	9

CODE NO.	ITEM	UNIT	TOTAL QUANTITY	CONSTR. CODE
				ROADWAY
				100% STATE 0005
* 78001100	PAINT PAVEMENT MARKING - LETTERS AND SYMBOLS	SQ FT	3.1	3.1
* 78001130	PAINT PAVEMENT MARKING - LINE 6"	FOOT	286	286
X0300019	REMOVE AND REINSTALL PARKING BLOCKS	EACH	16	16
X0327171	SCARIFY EXISTING SURFACE	SQ YD	194	194
Z0013798	CONSTRUCTION LAYOUT	L SUM	1	1

S

\*Specialty Items





N = 1,391,546.43  
E = 2,626,499.12

CONTROL POINT #2  
N = 1,391,510.52  
E = 2,626,441.57

CONTROL POINT #5  
N = 1,391,720.47  
E = 2,626,501.39

CONTROL POINT #7  
N = 1,391,938.89  
E = 2,626,564.71

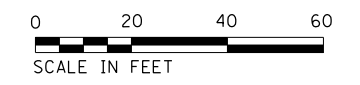
CONTROL POINT #8  
N = 1,391,931.85  
E = 2,626,409.92

PROP CURVE 6  
P.I. STA. = 113+61.38  
Δ = 55° 01' 38"  
D = 57° 17' 46"  
R = 100.00'  
T = 52.09'  
L = 96.04'  
E = 12.75'  
N = 1,391,702.69  
E = 2,626,392.60

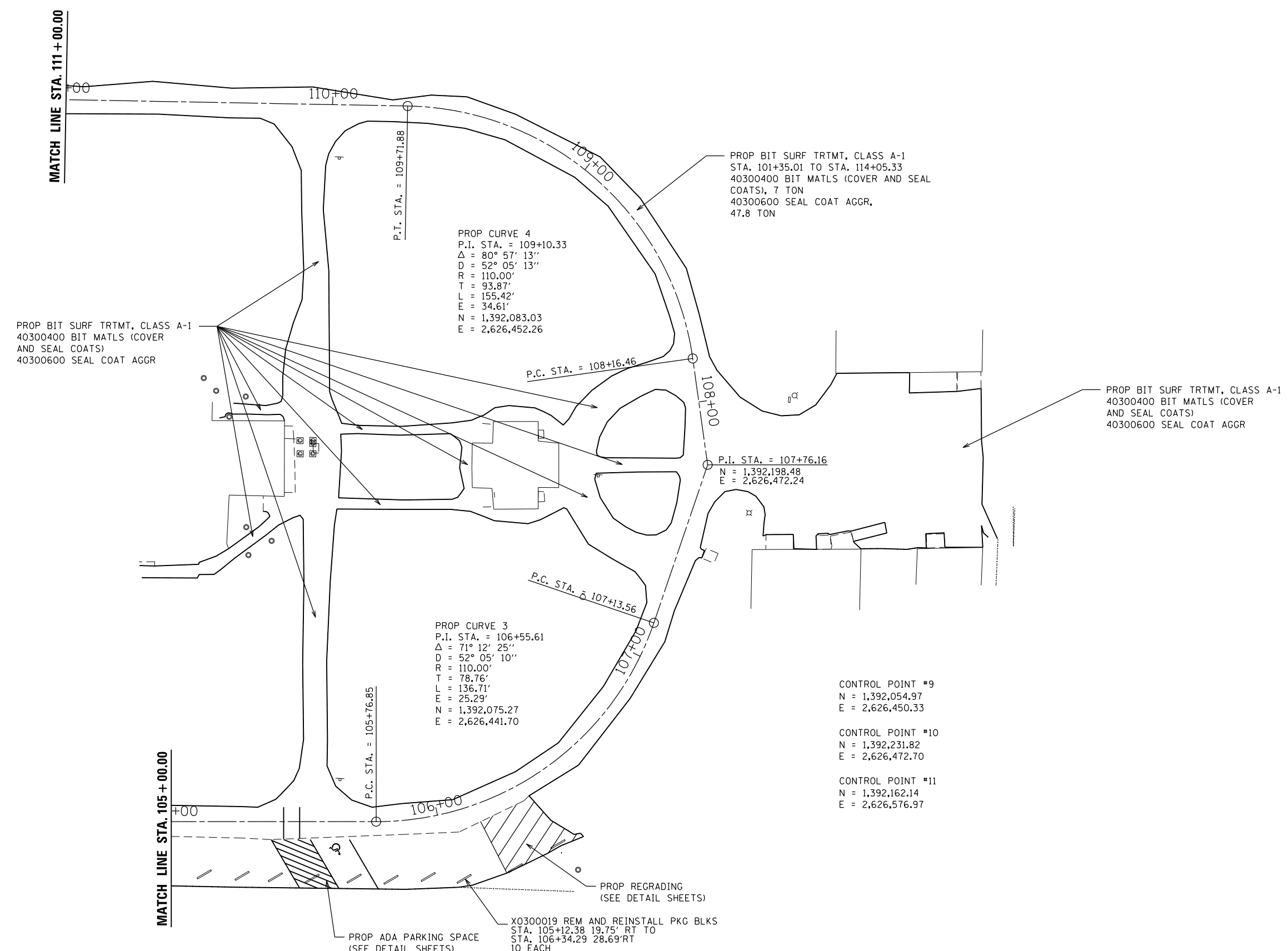
PROP CURVE 5  
P.I. STA. = 112+02.29  
Δ = 56° 05' 09"  
D = 47° 44' 41"  
R = 120.00'  
T = 63.92'  
L = 117.47'  
E = 15.96'  
N = 1,391,916.81  
E = 2,626,466.15

PROP CURVE 1  
P.I. STA. = 102+13.69  
Δ = 57° 04' 22"  
D = 63° 39' 42"  
R = 90.00'  
T = 48.94'  
L = 89.65'  
E = 12.45'  
N = 1,391,714.74  
E = 2,626,582.26

PROP CURVE 2  
P.I. STA. = 103+64.90  
Δ = 57° 04' 22"  
D = 31° 49' 38"  
R = 175.00'  
T = 95.16'  
L = 179.32'  
E = 24.20'  
N = 1,391,939.92  
E = 2,626,441.70



FILE NAME =	USER NAME = brianm	DESIGNED -	REVISED -	<b>STATE OF ILLINOIS DEPARTMENT OF TRANSPORTATION</b>	<b>PLAN VIEW DAVID DAVIS MANSION HISTORIC SITE</b>				F.A. RTÉ.	SECTION	COUNTY	TOTAL SHEETS	SHEET NO.	
S:\CAD Drawings\CAD Drawings\CAD Drawings\250\250-061-AD David Davis Topo\shht.05 Plr	DRAWN.dgn	CHECKED -	REVISED -		SCALE:	SHEET	OF	SHEETS	STA.	TO	STA.	McLEAN	9	5
Default	PLOT SCALE = 40.0000' / in.	DATE -	REVISED -		CONTRACT NO. 46404									
	PLOT DATE = 3/7/2016				ILLINOIS FED. AID PROJECT									

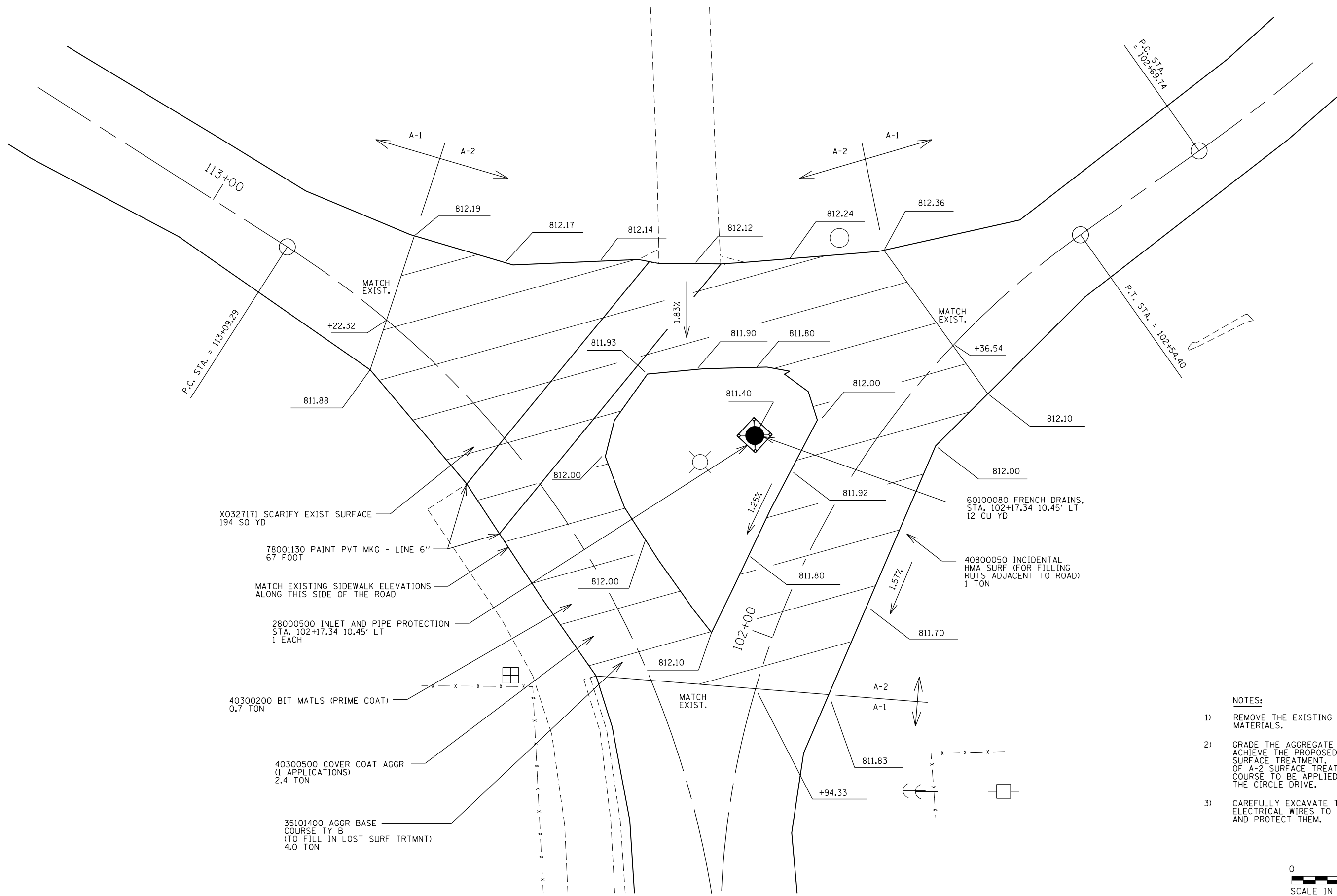


FILE NAME =	USER NAME = briann	DESIGNED -	REVISED -
S:\CAD Drawings\CAD Drawings\CAD Drawings\250\250-061-AD David Davis Topo\shht.06 Plr\DRAWN2.dgn		DRAWN -	REVISED -
Default	PLOT SCALE = 40.0000' / in.	CHECKED -	REVISED -
	PLOT DATE = 3/7/2016	DATE -	REVISED -

**STATE OF ILLINOIS  
DEPARTMENT OF TRANSPORTATION**

<b>PLAN VIEW</b>			
<b>DAVID DAVIS MANSION HISTORIC SITE</b>			
SCALE:	SHEET	OF SHEETS	STA. TO STA.

F.A. RTE.	SECTION	COUNTY	TOTAL SHEETS	SHEET NO.
		McLEAN	9	6
CONTRACT NO. 46404				
ILLINOIS FED. AID PROJECT				



X0327171 SCARIFY EXIST SURFACE  
194 SQ YD

78001130 PAINT PVT MKG - LINE 6"  
67 FOOT

MATCH EXISTING SIDEWALK ELEVATIONS  
ALONG THIS SIDE OF THE ROAD

28000500 INLET AND PIPE PROTECTION  
STA. 102+17.34 10.45' LT  
1 EACH

40300200 BIT MATLS (PRIME COAT)  
0.7 TON

40300500 COVER COAT AGGR  
(1 APPLICATIONS)  
2.4 TON

35101400 AGGR BASE  
COURSE TY B  
(TO FILL IN LOST SURF TRTMNT)  
4.0 TON

60100080 FRENCH DRAINS,  
STA. 102+17.34 10.45' LT  
12 CU YD

40800050 INCIDENTAL  
HMA SURF (FOR FILLING  
RUTS ADJACENT TO ROAD)  
1 TON

**NOTES:**

- 1) REMOVE THE EXISTING PAVEMENT SURFACE MATERIALS.
- 2) GRADE THE AGGREGATE BASE COURSE TO ACHIEVE THE PROPOSED TOP OF THE A-2 SURFACE TREATMENT. APPLY FIRST COURSE OF A-2 SURFACE TREATMENT ONLY. SECOND COURSE TO BE APPLIED WITH THE REST OF THE CIRCLE DRIVE.
- 3) CAREFULLY EXCAVATE TO EXPOSE THE ELECTRICAL WIRES TO THE LIGHT POLE AND PROTECT THEM.

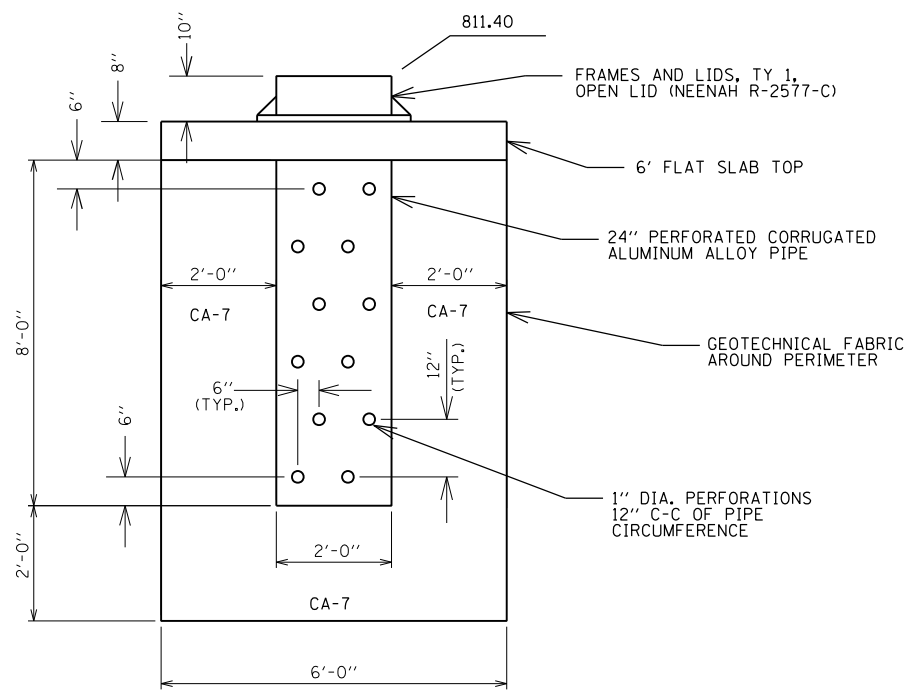
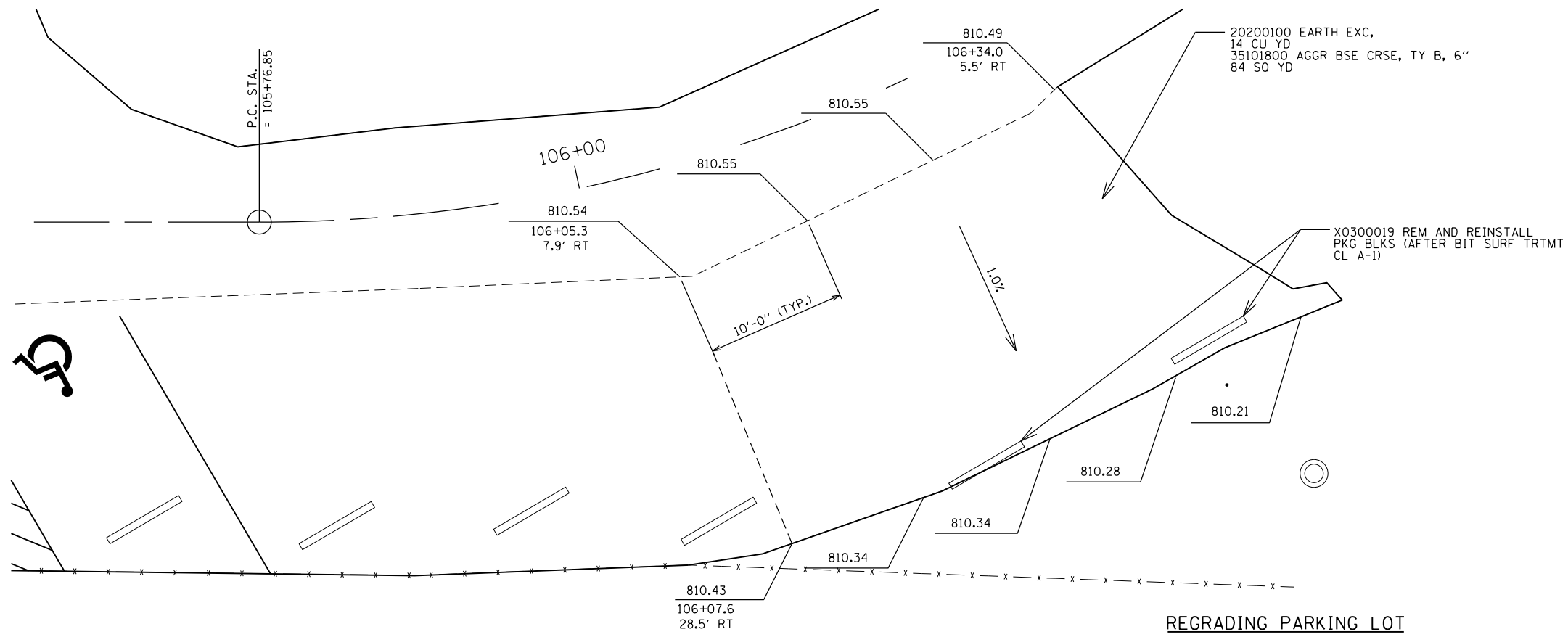


FILE NAME =	USER NAME = briann	DESIGNED -	REVISED -
S:\CAD Drawings\CAD Drawings\CAD Drawings\250\250-061-AD David Davis Topo\sh.t.07 Det		DRAWN -	REVISED -
Default	PLOT SCALE = 10.0000 "/ in.	CHECKED -	REVISED -
	PLOT DATE = 3/7/2016	DATE -	REVISED -

**STATE OF ILLINOIS  
DEPARTMENT OF TRANSPORTATION**

<b>DETAILS - ENTRANCE REGRAIDING PLAN</b>			
<b>DAVID DAVIS MANSION HISTORIC SITE</b>			
SCALE: 1" = 5'	SHEET	OF SHEETS	STA. TO STA.

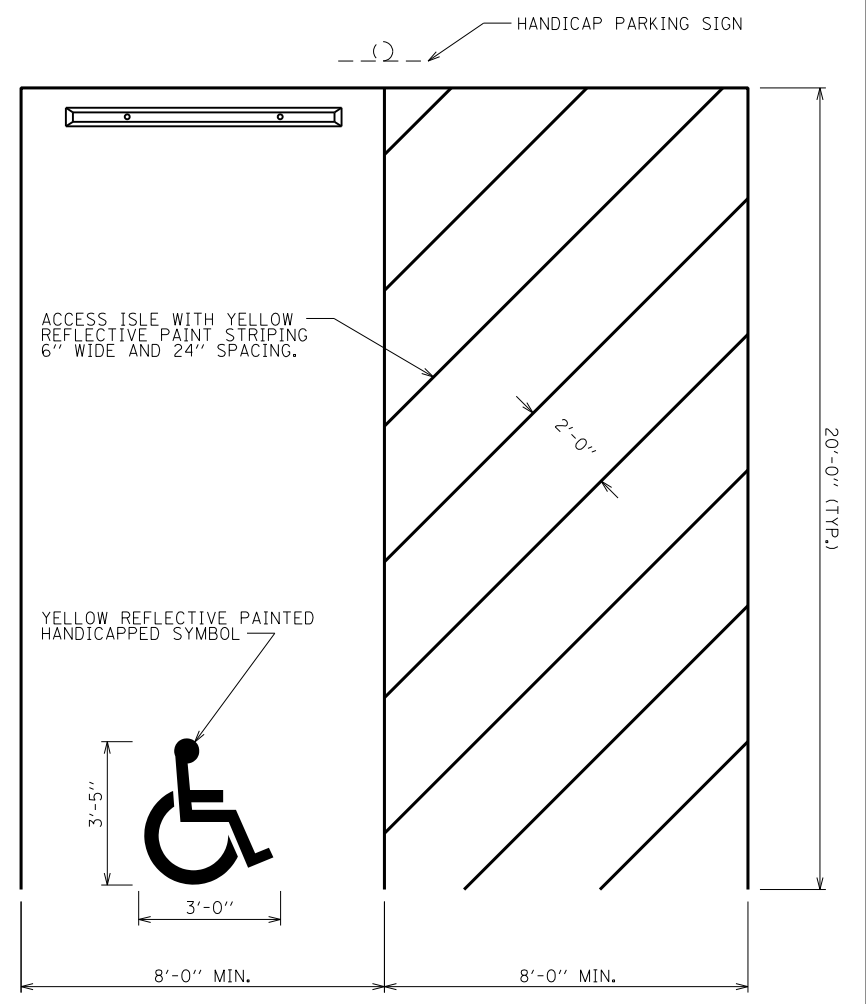
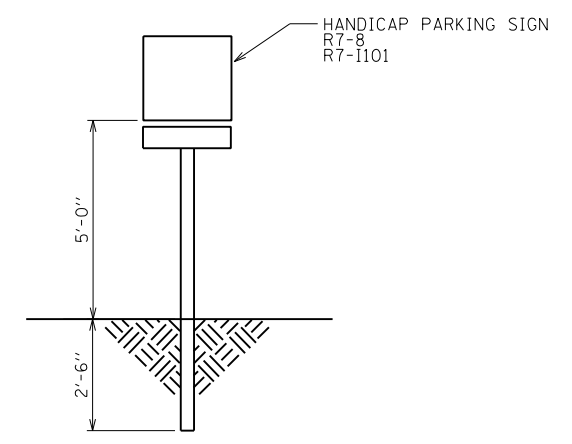
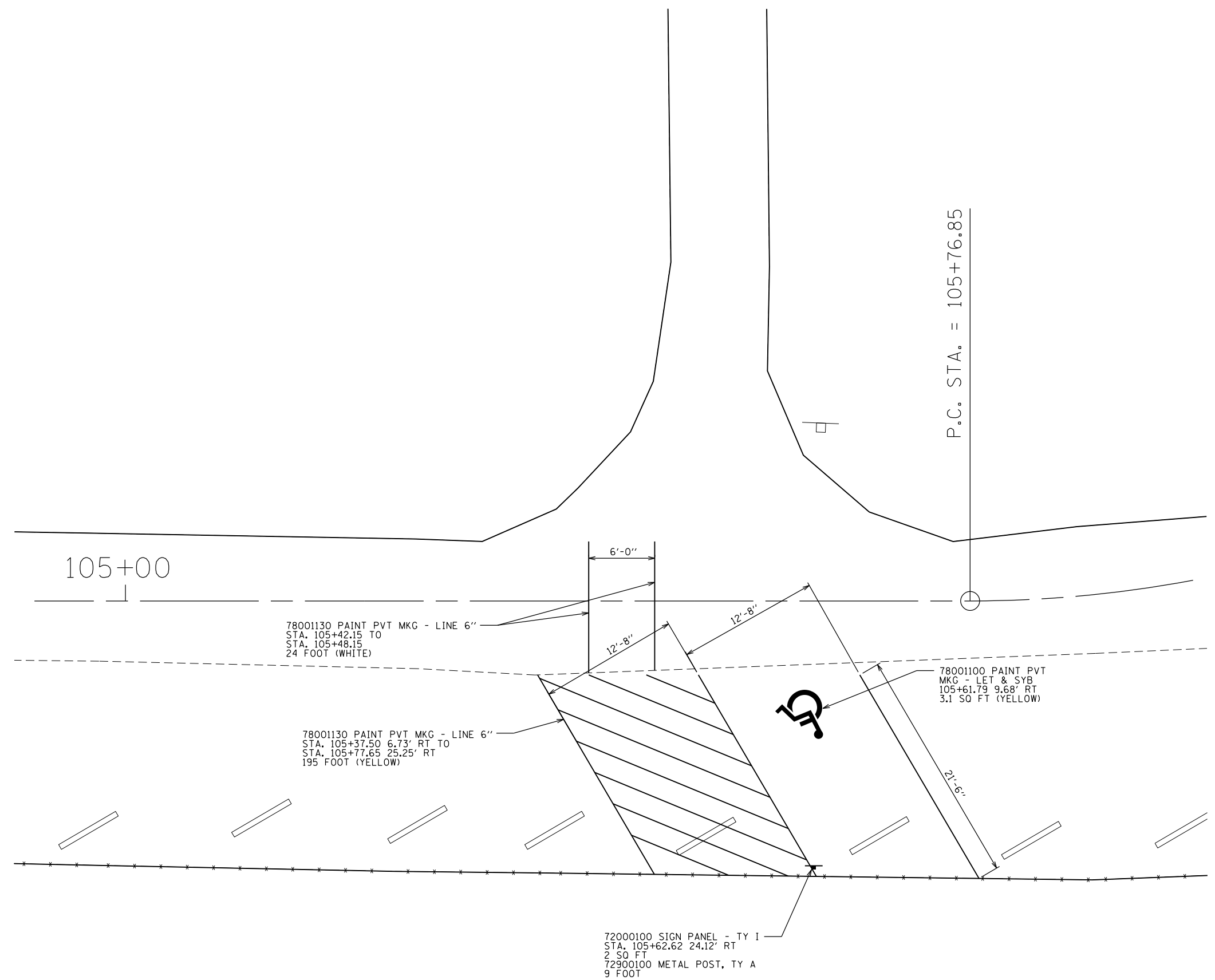
F.A. RTE.	SECTION	COUNTY	TOTAL SHEETS	SHEET NO.
		McLEAN	9	7
CONTRACT NO. 46404				
ILLINOIS FED. AID PROJECT				



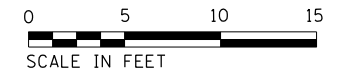
**60100080 FRENCH DRAINS**  
(NOT TO SCALE)

FILE NAME =	USER NAME = brianm	DESIGNED -	REVISED -	<b>STATE OF ILLINOIS DEPARTMENT OF TRANSPORTATION</b>	<b>DETAILS - HANDICAP SPACE AND PARKING LOT REGRAIDING DAVID DAVIS MANSION HISTORIC SITE</b>	F.A. RTE.	SECTION	COUNTY	TOTAL SHEETS	SHEET NO.	
S:\CAD Drawings\CAD Drawings\CAD Drawings\250\250-061-AD David Davis Topo\shd.08 Det	DRAWN -	REVISED -	REVISED -					McLEAN	9	8	
Default	PLOT SCALE = 10.0000 ' / in.	CHECKED -	REVISED -			CONTRACT NO. 46404					
	PLOT DATE = 3/7/2016	DATE -	REVISED -			SCALE: 1" = 5'	SHEET	OF	SHEETS	STA.	TO





HANDICAP PARKING SPACE DETAIL



FILE NAME =	USER NAME = brianm	DESIGNED - _____	REVISED - _____
S:\CAD Drawings\CAD Drawings\CAD Drawings\250\250-061-AD David Davis Topo\sh.t.09 Det	DRAWN - _____	CHECKED - _____	REVISED - _____
Default	PLOT SCALE = 10.0000 ' / in.	DATE - _____	REVISED - _____
	PLOT DATE = 3/7/2016		

**STATE OF ILLINOIS  
DEPARTMENT OF TRANSPORTATION**

**HANDICAP PARKING SPACE DETAILS  
DAVID DAVIS MANSION HISTORIC SITE**

SCALE: 1" = 5'    SHEET \_\_\_ OF \_\_\_ SHEETS    STA. \_\_\_\_\_ TO STA. \_\_\_\_\_

F.A. RTE.	SECTION	COUNTY	TOTAL SHEETS	SHEET NO.
		McLEAN	9	9
CONTRACT NO. 46404				
ILLINOIS FED. AID PROJECT				