

STATE OF ILLINOIS
DEPARTMENT OF TRANSPORTATION

**PROPOSED
HIGHWAY PLANS**

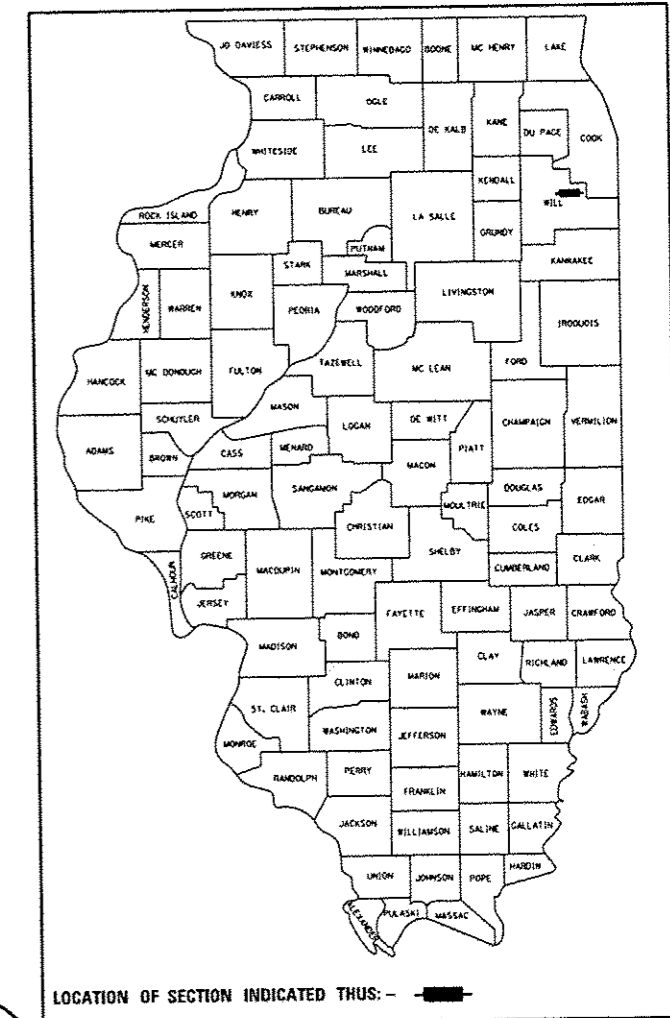
**FAI ROUTE 80 (INTERSTATE 80)
SECTION 99-4-1-SB-B-R
OLD PLANK ROAD TRAIL
PEDESTRIAN OVERPASS
WILL COUNTY**

C-91-061-13

F.A.I. RTE.	SECTION	COUNTY	TOTAL SHEETS	SHEET NO.
80	99-4-1-SB-B-R	WILL	46	1
ILLINOIS CONTRACT NO. 60V71				

* 46 + 14 = 60 TOTAL SHEETS

D-91-046-10



LOCATION OF SECTION INDICATED THUS: —■—

FOR INDEX OF SHEETS, SEE SHEET NO. 2

TRAFFIC DATA

ADT (2008)

INTERSTATE 80 = 81,200

ADT (2030):

INTERSTATE 80 = 115,000

DESIGN SPEED (I-80) = 60 MPH

POSTED SPEED (I-80) = 55 MPH

THE PROJECT CONSISTS OF THE REPLACEMENT OF S.N. 099-0235 WITH S.N. 099-3404 OVER I-80; RECONSTRUCTION OF OLD PLANK TRAIL FROM STA. 199+91.79 TO STA. 207+71.14.

BEGIN PROJECT
STA 199+91.79

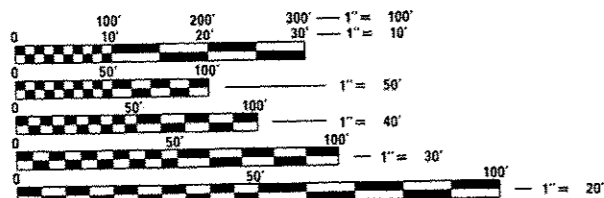
S.N. 099-3404 STA 203+76.65
TWO SPAN PREFABRICATED
PEDESTRIAN TRUSS BRIDGE
STA 203+79.65

END PROJECT
STA 207+71.14



LOCATION MAP
NOT TO SCALE

GROSS LENGTH (OLD PLANK TRAIL ROAD) = 779 FT. = 0.15 MILE
NET LENGTH (OLD PLANK TRAIL ROAD) = 779 FT. = 0.15 MILE



FULL SIZE PLANS HAVE BEEN PREPARED USING STANDARD ENGINEERING SCALES. REDUCED SIZED PLANS WILL NOT CONFORM TO STANDARD SCALES. IN MAKING MEASUREMENTS ON REDUCED PLANS, THE ABOVE SCALES MAY BE USED.

J.U.L.I.E.
JOINT UTILITY LOCATION INFORMATION FOR EXCAVATION
1-800-892-0123
OR 811

PROJECT ENGINEER: SUNG BYUN
PROJECT MANAGER: KIM HARVEY

CONTRACT NO. 60V71

REVISION 5-27-16

Duane O'Laughlin
DUANE O'LAUGHLIN
062-252501
LICENSED PROFESSIONAL ENGINEER OF ILLINOIS
DATE: 3/14/16
SEAL EXPIRES: 11/30/2017
APPLIES TO SHEETS
1 - 24
33 - 46

Salvatore C. DiBernardo
SALVATORE C. DI BERNARDO
081-005930
LICENSED STRUCTURAL ENGINEER STATE OF ILLINOIS
DATE: 3/14/16
SEAL EXPIRES: 11/30/2018
APPLIES TO SHEETS
25 - 32

Clorba Group, Inc.
DESIGN FIRM
REGISTRATION NUMBER
184-001016
CONSULTING ENGINEERS
SUITE 402, 5507 NORTH CUMBERLAND AVE
CHICAGO, ILLINOIS 60656 ☎ (773) 775-4009

STATE OF ILLINOIS
DEPARTMENT OF TRANSPORTATION
SUBMITTED *March 17, 2016*
John F. ... REGIONAL ENGINEER
Maureen M. Addis P.E. ENGINEER OF DESIGN AND ENVIRONMENT
Maureen M. Addis DIRECTOR OF PROGRAM DEVELOPMENT

**PRINTED BY THE AUTHORITY
OF THE STATE OF ILLINOIS**

INDEX OF SHEETS

VOLUME 1

SHEET NO.	DESCRIPTION
1	COVER SHEET - VOLUME 1
2	INDEX OF SHEETS AND STATE STANDARDS
3	GENERAL NOTES
4 - 9	SUMMARY OF QUANTITIES
10	TYPICAL SECTIONS
11	SCHEDULE OF QUANTITIES
12 - 13	ALIGNMENTS, TIES, AND BENCHMARKS
14	REMOVAL PLAN
15	PLAN AND PROFILE
16 - 19	STAGING AND TRAFFIC CONTROL PLAN
20	EROSION AND SEDIMENT CONTROL PLAN
21	PROPOSED DRAINAGE PLAN AND PROFILE
22	PLAT OF HIGHWAYS
23	PAVEMENT MARKING PLAN
24	LANDSCAPING PLAN
25 - 32	OLD PLANK ROAD TRAIL OVER I-80 STRUCTURAL PLANS
33	BENCHING CONSTRUCTION DETAIL (BD-51)
34	FREEWAY ENTRANCE AND EXIT RAMP CLOSURE DETAILS (TC-08)
35	TRAFFIC CONTROL DETAILS FOR FREEWAY SINGLE AND MULTI-LANE WEAVE (TC-09)
36 - 37	MULTI-LANE FREEWAY PAVEMENT MARKING DETAILS (TC-12)
38	TRAFFIC CONTROL DETAILS FOR FREEWAY SHOULDER CLOSURES AND PARTIAL RAMP CLOSURES (TC-17)
39	SIGNING FOR FLAGGING OPERATIONS AT WORK ZONE OPENINGS (TC-18)
40 - 46	CROSS SECTIONS

46A - 46N EXISTING BRIDGE SHEETS

LIST OF STATE STANDARDS


STD NO.	DESCRIPTION
000001-06	STANDARD SYMBOLS, ABBREVIATIONS, AND PATTERNS
280001-07	TEMPORARY EROSION CONTROL SYSTEMS
515001-03	NAME PLATE FOR BRIDGES
630001-10	STEEL PLATE BEAM GUARDRAIL
630301-06	SHOULDER WIDENING FOR TYPE 1 (SPECIAL) GUARDRAIL TERMINALS
631011-09	TRAFFIC BARRIER TERMINAL, TYPE 2
642001-02	SHOULDER RUMBLE STRIPS, 16 in.
643001-02	SAND MODULE IMPACT ATTENUATORS
701101-05	OFF-ROAD OPERATIONS, MULTILANE, 15' (4.5 m) TO 24" (600 mm) FROM PAVEMENT EDGE
701400-08	APPROACH TO LANE CLOSURE, FREEWAY/EXPRESSWAY
701401-09	LANE CLOSURE, FREEWAY/EXPRESSWAY
701411-09	LANE CLOSURE, MULTILANE, AT ENTRANCE OR EXIT RAMP, FOR SPEEDS ≥ 45 MPH
701426-08	LANE CLOSURE, MULTILANE, INTERMITTENT OR MOVING OPER., FOR SPEEDS ≥ 45 MPH
701428-01	TRAFFIC CONTROL SETUP AND REMOVAL FREEWAY/EXPRESSWAY
701446-07	TWO LANE CLOSURE FREEWAY/EXPRESSWAY
701901-05	TRAFFIC CONTROL DEVICES
704001-08	TEMPORARY CONCRETE BARRIER
725001	OBJECT AND TERMINAL MARKERS
780001-05	TYPICAL PAVEMENT MARKINGS
782006	GUARDRAIL AND BARRIER WALL REFLECTOR MOUNTING DETAILS

COMMITMENTS

- THE OLD PLANK ROAD TRAIL BRIDGE OVER I-80 IS PROPOSED FOR RELOCATION EAST OF THE EXISTING STRUCTURE ALMOST ENTIRELY WITHIN THE EXISTING PERMANENT EASEMENT. CLOSURE OF THE EXISTING TRAIL IS NOT ANTICIPATED AS THE EXISTING STRUCTURE AND APPROACHES WILL REMAIN OPERATIONAL AS THE RELOCATED APPROACHES ARE BEING CONSTRUCTED. PER COORDINATION WITH THE FPDWC, CLOSURE OF THE TRAIL DURING CONSTRUCTION WILL BE MINIMIZED TO THE EXTENT POSSIBLE. A SHORT TERM CLOSURE MAY BE REQUIRED FOR THE PLACEMENT OF THE NEW STRUCTURE OVER I-80 AND SHIFTING OF BICYCLE TRAFFIC TO THE NEW BRIDGE.

⚠️ REVISED 5-27-16

N:\PROJ\8803384\0017_Dtd_Plank_Trail\Design\Misc_Sheets\3384_0PRT_Index.dgn

 ENGINEERING CONSULTANT CONSULTING ENGINEERS 6107 North Cumberland Avenue, Suite 402 Chicago, Illinois 60645 Tel: 773.294.4507 Fax: 773.274.4034 Email: info@clorbagroup.com	USER NAME = mdaabou	DESIGNED - EPS	REVISED -	STATE OF ILLINOIS DEPARTMENT OF TRANSPORTATION	OLD PLANK ROAD TRAIL OVER F.A.I. ROUTE 80 INDEX OF SHEETS, STATE STANDARDS, AND COMMITMENTS	F.A.I. RTE.	SECTION	COUNTY	TOTAL SHEETS	SHEET NO.
	PLOT SCALE = 2.0000' / 1" =	DRAWN - JB	REVISED -			80	99-4-1-SB-B-R	WILL	46	2
PLOT DATE = 3/17/2016	CHECKED - DJO	REVISED -		SCALE: SHEET NO. OF SHEETS STA. TO STA.		ILLINOIS FED. AID PROJECT CONTRACT NO. 60V71				
	DATE = 8/14/2014	REVISED -								


CONSTRUCTION CODE
URBAN
100% STATE
FACILITIES
0028

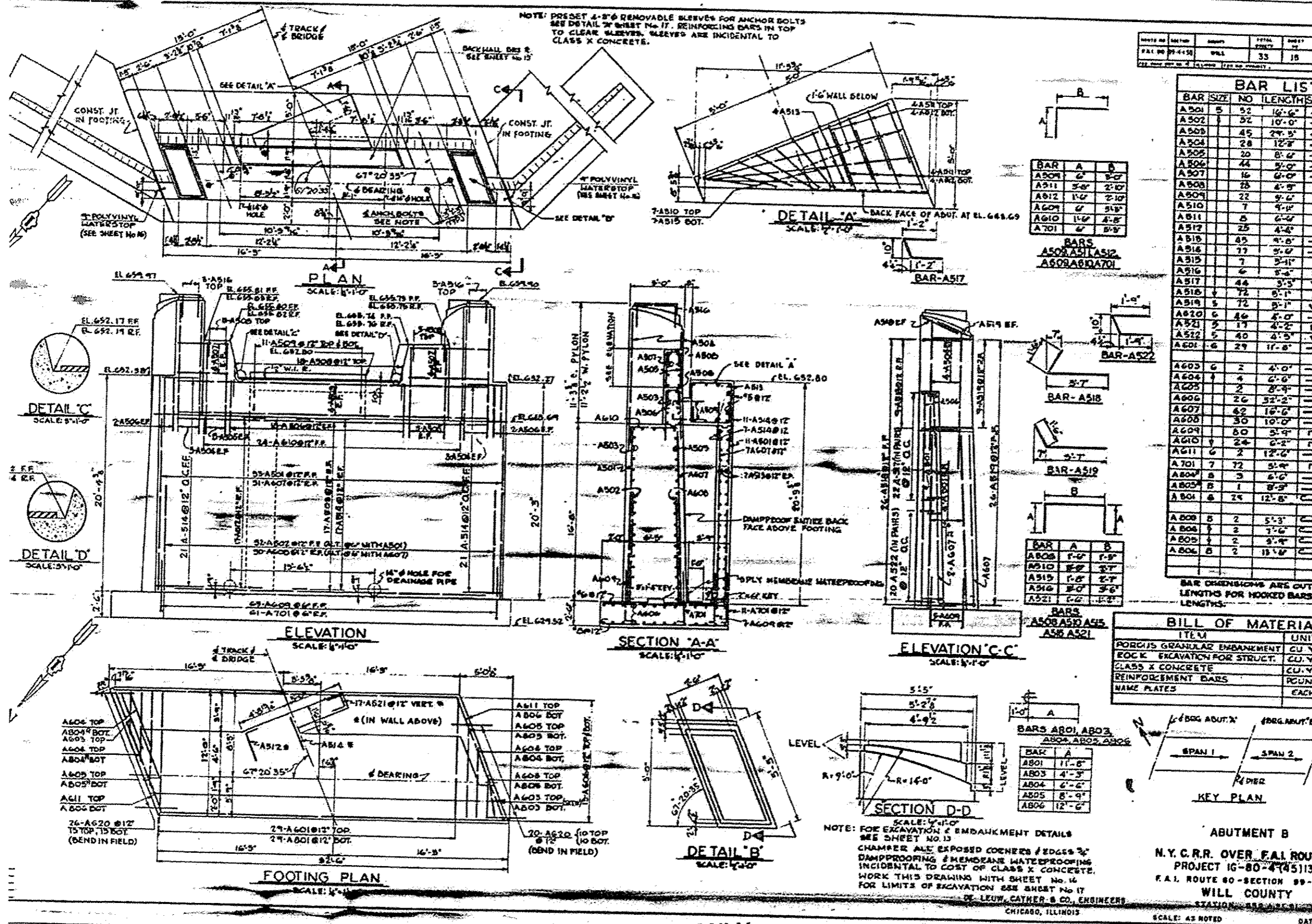
CODE NO.	ITEM	UNIT	TOTAL	CONSTRUCTION CODE
50200100	STRUCTURE EXCAVATION	CU YD	82	82
* 50200400	ROCK EXCAVATION FOR STRUCTURES	CU YD	20	20
50301350	CONCRETE STRUCTURES (APPROACH SLAB)	CU YD	112.4	112.4
50300225	CONCRETE STRUCTURES	CU YD	112.4	112.4
50300255	CONCRETE SUPERSTRUCTURE	CU YD	11.1	11.1
1 50301350	CONCRETE SUPERSTRUCTURE (APPROACH SLAB)	CU YD	11.1	11.1
50300300	PROTECTIVE COAT	SQ YD	50	50
50800105	REINFORCEMENT BARS	POUND	890	890
50800205	REINFORCEMENT BARS, EPOXY COATED	POUND	19,810	19,810
51500100	NAME PLATES	EACH	2	2
51603000	DRILLED SHAFT IN SOIL	CU YD	4.1	4.1
51604000	DRILLED SHAFT IN ROCK	CU YD	4.8	4.8
54210192	PIPE ELBOW, 36"	EACH	2	2
54213459	END SECTIONS 24"	EACH	4	4
5421024	PIPE CULVERTS, CLASS D, TYPE 1 24" (TEMPORARY)	FOOT	200	200
550B0160	STORM SEWERS, CLASS B, TYPE 1 36"	FOOT	110	110
58700300	CONCRETE SEALER	SQ FT	1,181	1,181
59100100	GEOCOMPOSITE WALL DRAIN	SQ YD	19	19
60224445	MANHOLES, TYPE A, 7' -DIAMETER, TYPE 1 FRAME, OPEN LID	EACH	2	2
* 63000001	STEEL PLATE BEAM GUARDRAIL, TYPE A, 6 FOOT POSTS	FOOT	437.5	437.5

* SPECIALTY ITEMS

REVIS 5-27-16

I:\PROJECTS\9881394\807_01g\Plan - Trail\Design\Misc_Sheets\3384_DPRF_50283.dgn

 <p>Ciorba Group, Inc. CONSULTING ENGINEERS 557 North Cicero Avenue, Suite 402 Chicago, IL 60642 Tel: 773.291.1200 Fax: 773.291.1204 www.ciorbainc.com</p>	USER NAME : aharr DESIGNED - EPS DRAWN - JB CHECKED - DJD PLOT DATE : 3/16/2016	REVISED - REVISED - REVISED - REVISED -	STATE OF ILLINOIS DEPARTMENT OF TRANSPORTATION	OLD PLANK ROAD TRAIL OVER F.A.I. ROUTE 80 SUMMARY OF QUANTITIES	F.A.I. RTE. : 80 SECTION : 99-4-1-SB-B-R COUNTY : WILL TOTAL SHEETS : 46 SHEET NO. : 6	CONTRACT NO. 60V71 ILLINOIS FED. AID PROJECT
	SCALE: 1" = 50' SHEET NO. OF SHEETS : STA. TO STA.					



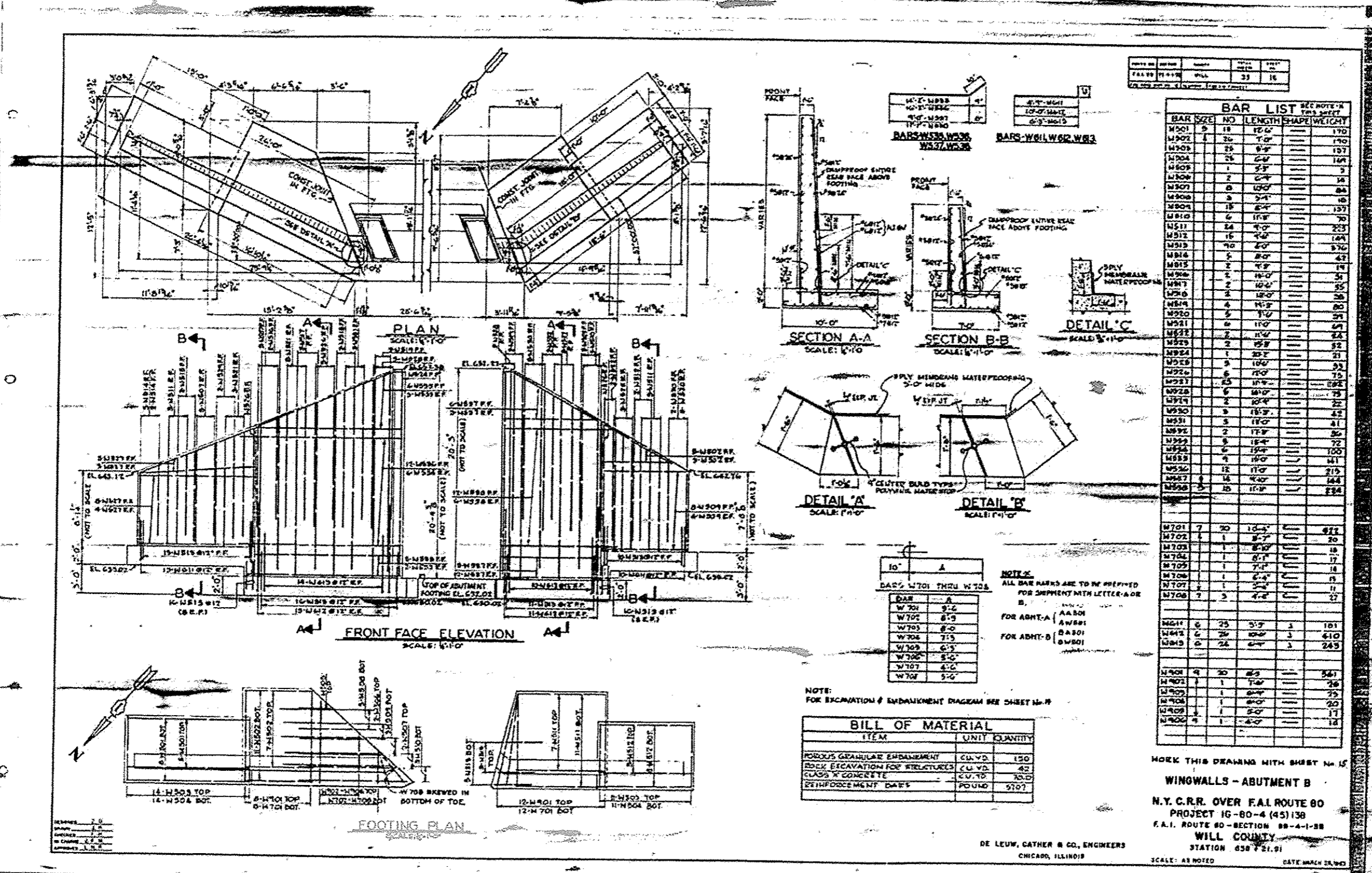
FOR INFORMATION ONLY

1 SHEET ADDED 5-27-16

SCALE: AS NOTED DAT

DE LEUW, CATHY & CO. ENGINEERS
CHICAGO, ILLINOIS

ABUTMENT B
N.Y.C.R.R. OVER F.A.I. ROUTE
PROJECT 16-80-445113
F.A.I. ROUTE 80-SECTION 99-
WILL COUNTY
STATION 88+00.00



BAR LIST				
BAR SIZE	NO	LENGTH	SHAPE	WEIGHT
M501	9	18'	10-0"	170
M502	1	20'	7-0"	190
M503	23	8'-0"		197
M504	25	6'-0"		168
M505	1	3'-0"		3
M506	2	6'-0"		16
M507	8	10'-0"		84
M508	3	3'-0"		16
M509	19	6'-0"		197
M510	6	11'-0"		70
M511	24	8'-0"		233
M512	16	7'-0"		168
M513	40	8'-0"		370
M514	5	8'-0"		47
M515	2	4'-0"		19
M516	2	11'-0"		31
M517	2	10'-0"		35
M518	2	10'-0"		35
M519	4	11'-0"		38
M520	5	11'-0"		60
M521	6	11'-0"		37
M522	2	11'-0"		67
M523	2	11'-0"		22
M524	2	11'-0"		32
M525	1	10'-0"		21
M526	9	10'-0"		33
M527	6	11'-0"		75
M528	6	11'-0"		82
M529	6	11'-0"		75
M530	2	10'-0"		22
M531	3	11'-0"		42
M532	2	11'-0"		36
M533	6	11'-0"		72
M534	6	11'-0"		100
M535	7	11'-0"		141
M536	12	11'-0"		215
M537	14	11'-0"		164
M538	15	11'-0"		224
M701	7	10'-0"		412
M702	1	8'-0"		20
M703	1	8'-0"		19
M704	1	8'-0"		17
M705	1	7'-0"		14
M706	1	6'-0"		11
M707	1	5'-0"		11
M708	2	4'-0"		27
M811	6	25'	3-0"	181
M812	6	25'	3-0"	410
M813	6	24'	3-0"	243
M901	4	30'	2-0"	547
M902	1	1'-0"		26
M903	1	6'-0"		25
M904	1	6'-0"		20
M905	1	5'-0"		17
M906	1	4'-0"		14

BAR	SIZE	LENGTH	WEIGHT
W701	3-0"	10'-0"	412
W702	2-0"	8'-0"	20
W703	2-0"	8'-0"	19
W704	2-0"	8'-0"	17
W705	2-0"	7'-0"	14
W706	2-0"	6'-0"	11
W707	2-0"	5'-0"	11
W708	2-0"	4'-0"	27

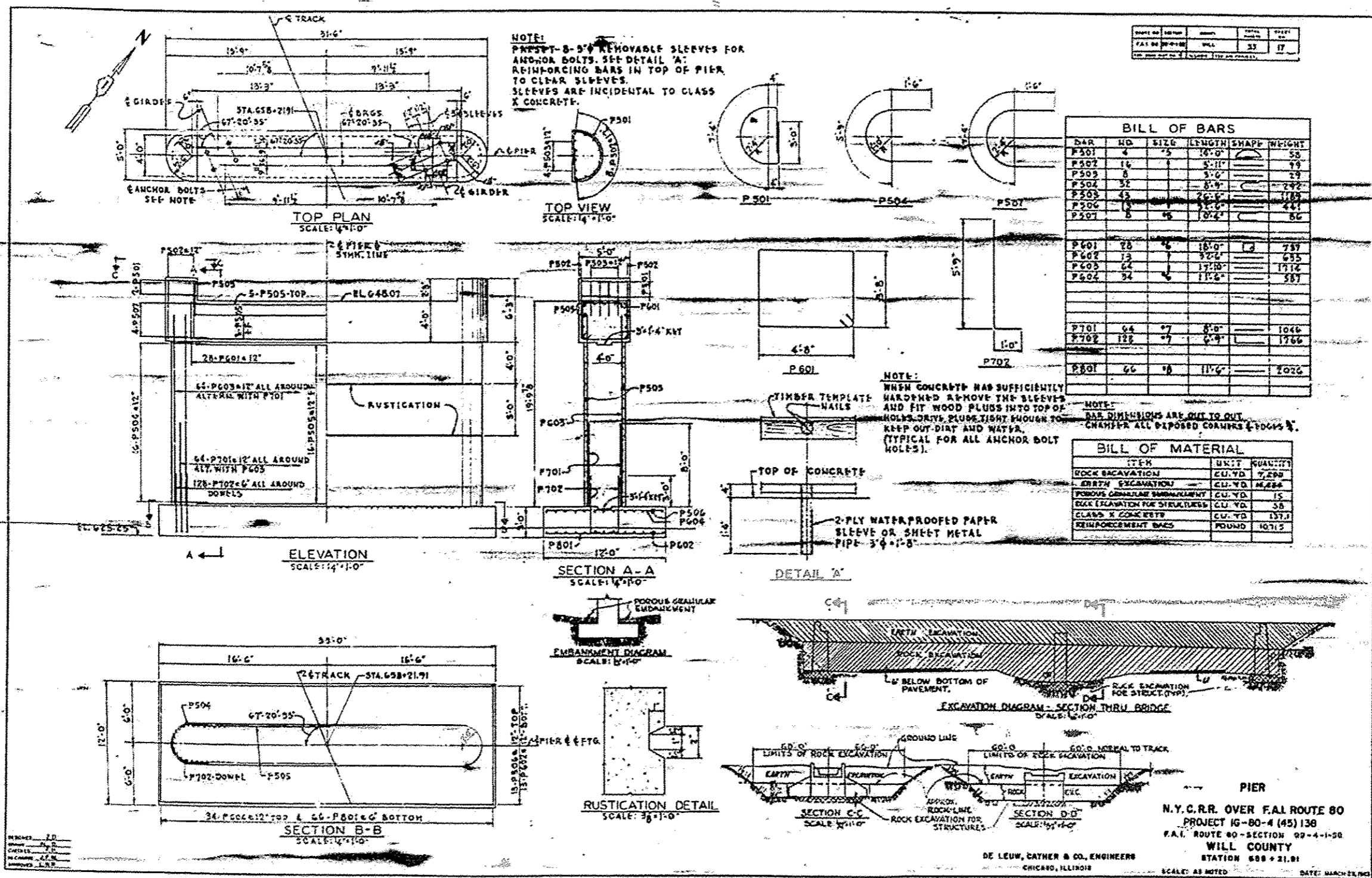
BILL OF MATERIAL		
ITEM	UNIT	QUANTITY
POREOUS GRANULAR EMBANKMENT	CU. YD.	150
ROCK EXCAVATION FOR STRUCTURES	CU. YD.	42
CLASS 'X' CONCRETE	CU. YD.	103.0
REINFORCEMENT BARS	POUND	5707

WORK THIS DRAWING WITH SHEET No. 15
WINGWALLS - ABUTMENT B
 N.Y. C.R.R. OVER F.A.I. ROUTE 80
 PROJECT 1G-80-4 (45) 138
 F.A.I. ROUTE 80 - SECTION 88-4-1-88
 WILL COUNTY
 STATION 658+21.91
 SCALE: AS NOTED DATE: MARCH 28, 1960

DE LEUW, CATHER & CO., ENGINEERS
 CHICAGO, ILLINOIS

FOR INFORMATION ONLY

1 SHEET ADDED 5-27-16

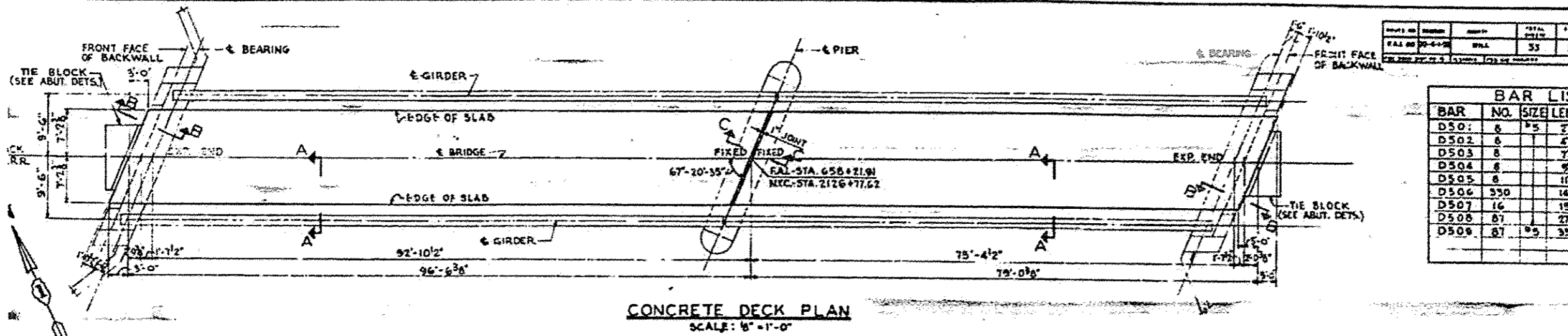


DATE	NO.	BY	TOTAL	REVISION
F.A.L. NO.	IG-80-4	W.C.L.	33	17

BILL OF BARS					
BAR	NO.	SIZE	LENGTH	SHAPE	WEIGHT
P501	4	7/8"	16'-0"		58
P502	16	1"	5'-11"		79
P503	8	1"	5'-0"		29
P504	32	1/2"	8'-0"		242
P505	45	3/8"	20'-0"		178
P506	8	1/2"	10'-0"		44
P507	8	1/2"	10'-0"		86
P601	28	1/2"	18'-0"	L	757
P602	12	1/2"	17'-0"		655
P603	64	1/2"	17'-0"		1716
P604	34	1/2"	11'-0"		587
P701	64	3/8"	8'-0"		1046
P702	128	3/8"	8'-0"		1766
P801	66	1/2"	11'-0"		2026

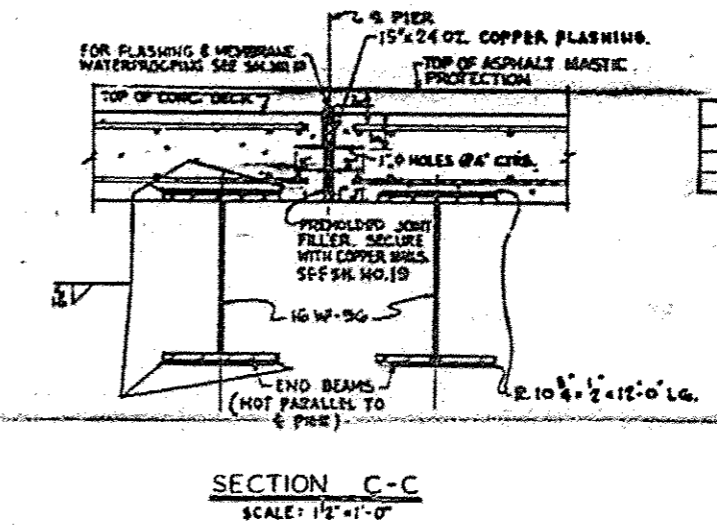
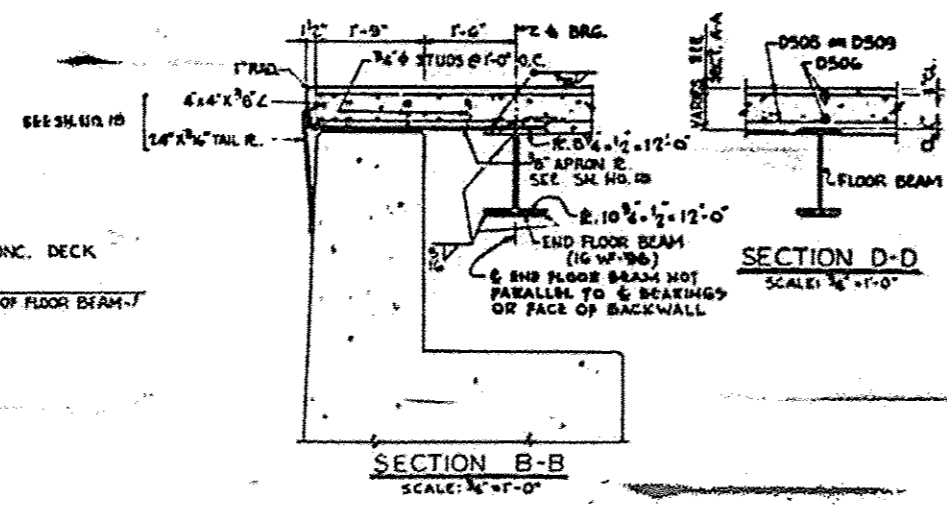
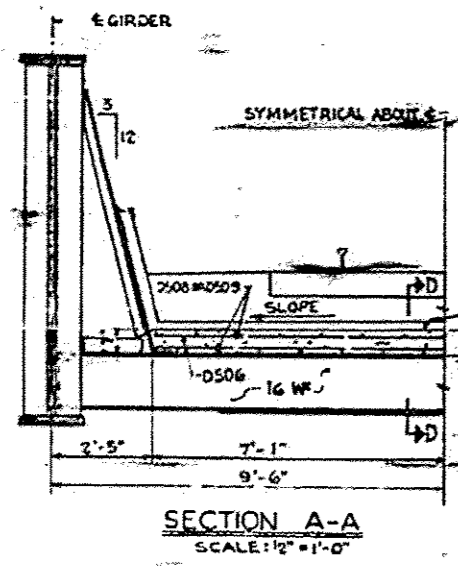
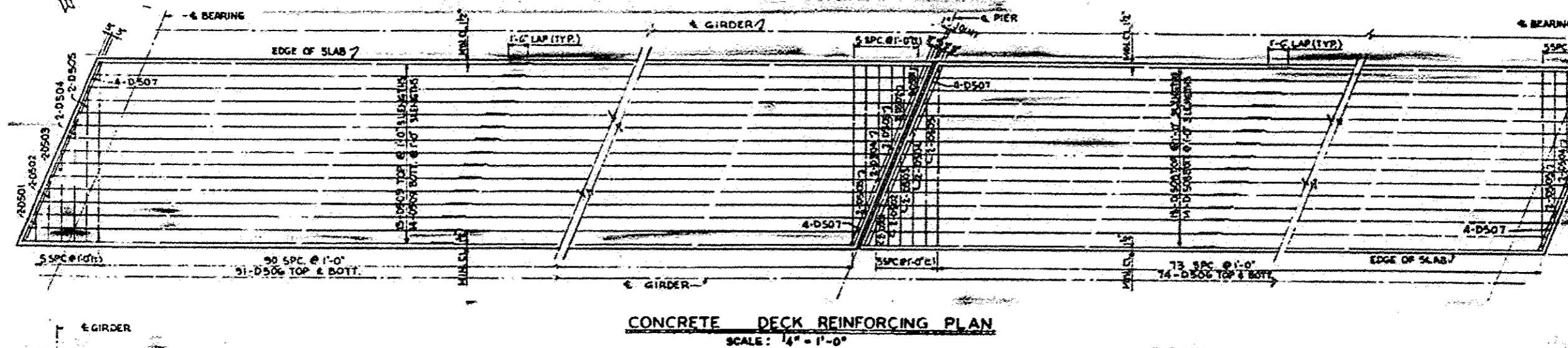
BILL OF MATERIAL		
ITEM	UNIT	QUANTITY
ROCK EXCAVATION	CU. YD.	7,290
EARTH EXCAVATION	CU. YD.	4,284
POREUS GRANULAR EMBANKMENT	CU. YD.	15
CLAY EXCAVATION FOR STRUCTURES	CU. YD.	38
CLASS X CONCRETE	CU. YD.	137.1
REINFORCEMENT BARS	POUNDS	10,712

FOR INFORMATION ONLY



NO.	DESCRIPTION	QUANTITY	UNIT
1	CONCRETE DECK	53	YD

BAR LIST			
BAR NO.	NO.	SIZE	LEN.
D501	8	#5	2'-0"
D502	8	#5	4'-0"
D503	8	#5	7'-0"
D504	8	#5	9'-0"
D505	8	#5	11'-0"
D506	330	#5	14'-0"
D507	16	#5	15'-0"
D508	81	#5	27'-0"
D509	81	#5	35'-0"



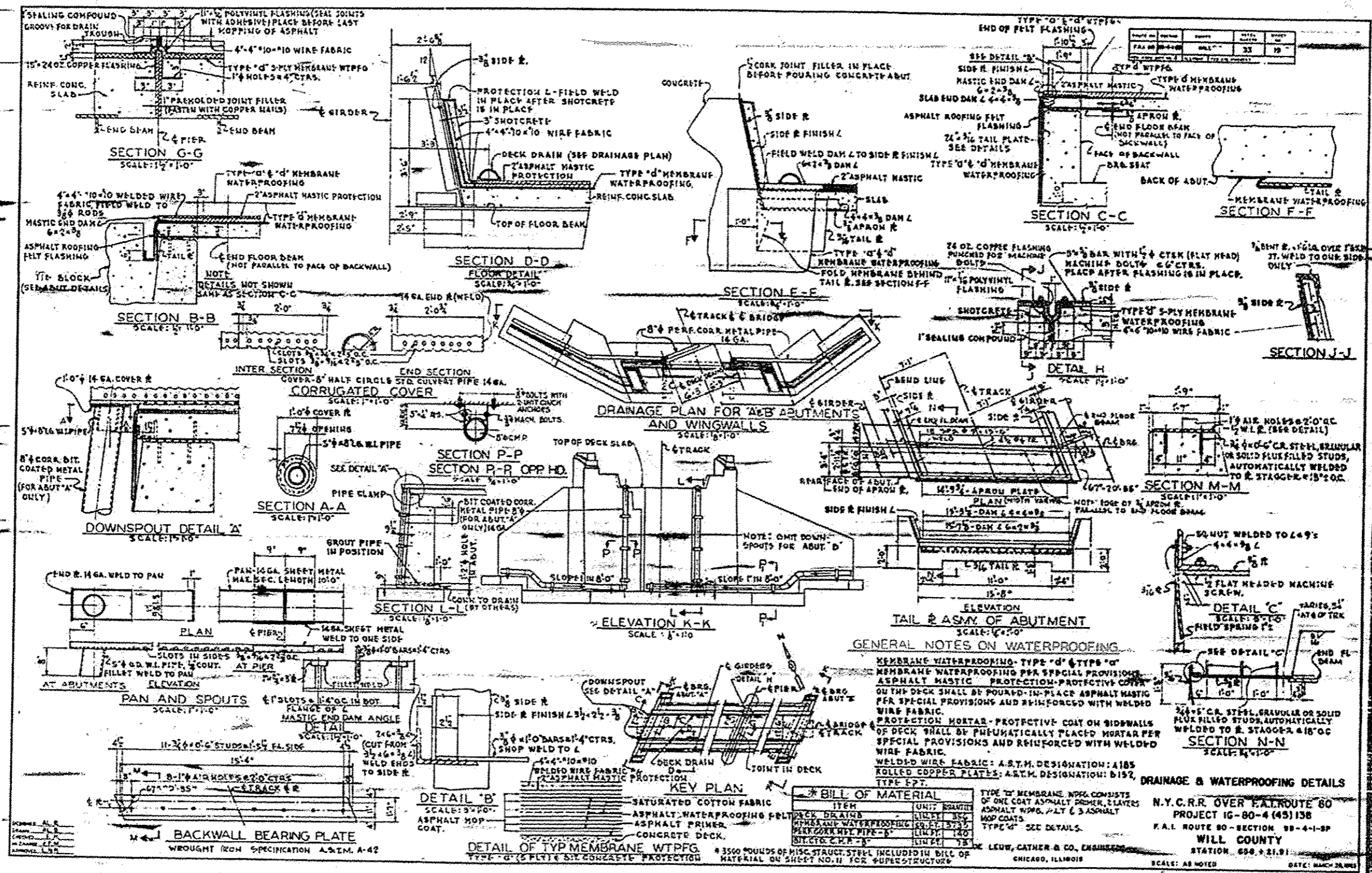
BILL OF MATERIALS	
ITEM	QUANTITY
CLASS X CONCRETE	
REINFORCEMENT BARS	

CONCRETE DECK
N.Y.C.R.R. OVER F.A.I.
PROJECT 16-80-4 (1)
F.A.I. ROUTE 80 - SECTION
WILL COUNT
STATION 658+21

DE LEUW, CATHNER & CO., ENGINEERS
CHICAGO, ILLINOIS

FOR INFORMATION ONLY

1 SHEET ADDED 5-27-16



FOR INFORMATION ONLY

STATE OF ILLINOIS
DEPARTMENT OF PUBLIC WORKS AND BUILDINGS
DIVISION OF HIGHWAYS
PLANS FOR PROPOSED
FEDERAL AID INTERSTATE HIGHWAY

INDEX OF SHEETS ON SHEET NO. 4

FEDERAL AID DISTRICT NO.	ACTION	COUNTY	TOTAL SHEETS	SHEET NO.
F.A.I. 80	99-4-1 SB	WILL	33	1
U.S. DEPARTMENT OF PUBLIC WORKS		ILLINOIS	FEDERAL AID PROJECT 99-4-1 SB	
ROAD, DIV. 4		ALABAMA		

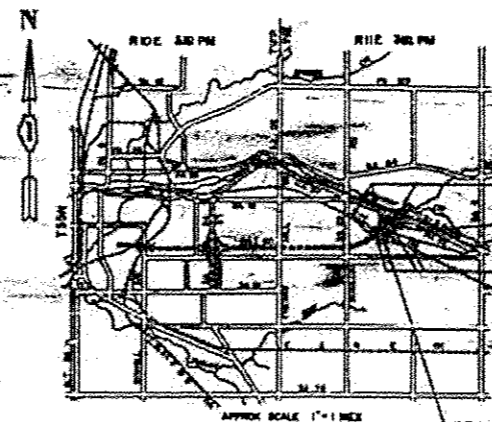
PC-91-108-00

SCALES
 PLAN 1" = 1000 FT.
 PROFILE, VERT. 1" = 10 FT.
 GRADE, VERT. 1" = 10 FT.
 CROSS-SECTION 1" = 20 FT. & 10 FT. 10:1

F.A.I. ROUTE 80 - SECTION 99-4-1 SB
 PROJECT IG-80-4(45)138
 WILL COUNTY
 PC-91-108-00



HIGHWAY CLASSIFICATION
 2325-7-70



IMPROVEMENTS
 STA. 2156+00 TO STA. 2156+00 - R.R.
 STA. 2156+00 TO STA. 2156+00 - F.A.I. 80

IMPROVEMENTS
 STA. 2156+00 TO STA. 2156+00 - R.R.
 STA. 2156+00 TO STA. 2156+00 - F.A.I. 80

IMPROVEMENTS
 STA. 2156+00 TO STA. 2156+00 - R.R.
 STA. 2156+00 TO STA. 2156+00 - F.A.I. 80

APPROVED
 FOR STRUCTURAL PURPOSES ONLY
 [Signature]

STATE OF ILLINOIS
 DEPARTMENT OF PUBLIC WORKS AND BUILDINGS
 DIVISION OF HIGHWAYS
 [Signatures]

PROJECT INCLUDES RAIL ROAD GRADE SEPARATION STRUCTURE
 THE WORK SHALL INCLUDE THE CONSTRUCTION OF A TWO SPAN THROUGH PLATE GIRDER AND CHAMFER END RAILROAD GRADE SEPARATION STRUCTURE OVER RAIL ROUTE 80 ON REINFORCED CONCRETE ABUTMENTS AND PILES. THE STRUCTURE HAS A WATERPROOFED CONCRETE DECK AND STONE WALLS FOR SUPPORT OF THE RAILROAD TRACKS. SPAN LENGTHS ARE 80'-0" AND 74'-0".
 ALSO INCLUDED IN THE CONSTRUCTION AND MAINTENANCE OUTLINE OF A TEMPORARY RAILROAD RUN-AROUND REQUIRED FOR RAILROAD OPERATION DURING CONSTRUCTION OF THE PERMANENT STRUCTURE.

NET PROJECT LENGTH - 0.60 FT.

DEPARTMENT OF COMMERCE
 BUILDING OF PUBLIC WORKS
 APPROVED
 DIVISION ENGINEER

CONTRACT NO. 23193

COUNTY WILL
 SECTION 99-4-1 SB
 F.A.I. ROUTE 80

FOR INFORMATION ONLY

1 SHEET ADDED 5-27-16

DATE	NO.	REVISION
10-1-58	1	ISSUE

INDEX OF SHEETS

SUMMARY OF QUANTITIES

PLAN-NOTES

SHEET NO.	TITLE	QUANTITY	UNIT	PAY ITEM	CODE NO.
1	COVER SHEET	88	LN DIA	TREE REMOVAL (6 TO 12 INCH DIAMETER)	010001
2	TYPICAL SECTIONS (FOR INFORMATION)	17	LN DIA	TREE REMOVAL (COVER 15 INCH DIAMETER)	010002
3	TYPICAL SECTION FOR ROCK CUT (FOR INFORMATION)	24,883	CU YD	EARTH EXCAVATION	011001
4	INDEX OF SHEETS, SUMMARY OF QUANTITIES AND PLAN NOTES	7,288	CU YD	ROCK EXCAVATION	011002
4A	CRITICAL PATH SCHEDULE				
5	TOPO PLAN	630	CU YD	POROUS GRANULAR EMBANKMENT	019001
6	ALIGNMENT PLAN (FOR INFORMATION)	54	CU YD	POROUS GRANULAR BACKFILL	021001
7	PROFILE	288	CU YD	ROCK EXCAVATION FOR STRUCTURES	020003
8	GENERAL PLAN	366	LN FT	DECK DRAIN	031006
9	RUN-AROUND TRACK	708	CU YD	CLASS II CONCRETE	052005
10	FRAMING PLAN & GIRDER DETAILS	3,728	SD FT	MEMBRANE WATERPROOFING	050004
11	GIRDER & SPLICE DETAILS	421,600	POUND	FURNISHING AND ERECTING STRUCTURAL STEEL	050004
12	BEARING DETAILS				
13	ABUTMENT A				
14	PIERS - ABUTMENT A	56,143	POUND	REINFORCEMENT BARS	050001
15	ABUTMENT B	2	EACH	WIRE PLATES	050001
16	PIERS - ABUTMENT B	2	EACH	RAILROAD SIGNALS, INSTALLED	050001
17	PIER	30	LN FT	CORRUGATED METAL PIPE 15"	050001
18	CONCRETE DECK	36	LN FT	CORRUGATED METAL PIPE 36"	050001
19	DRAINAGE & WATERPROOFING DETAILS	140	LN FT	PERFORATED CORRUGATED METAL PIPE 6"	050001
20	NAME PLATE AND RAILROAD SIGNAL	73	LN FT	BITUMINOUS COATED CORRUGATED METAL PIPE 18"	050001
21	CROSS SECTIONS - STA. 857+58 TO STA. 859+48 - F.A.I. 80	650	LN FT	GUARD FENCE	050001
22	CROSS SECTIONS - STA. 870+78 TO STA. 872+00 - F.A.I. 80	2,720	LN FT	TEMPORARY BARBED WIRE FENCE	050001
23	CROSS SECTIONS - STA. 872+28 TO STA. 872+97 - F.A.I. 80	1	LN FT	RAILROAD PROTECTIVE SERVICES	050001
24	CROSS SECTIONS - STA. 2112+75 TO STA. 2118+00 - R.R.	240	LN FT	PIPE CULVERT TYPE 2A, 4.8'	050001
25	CROSS SECTIONS - STA. 2118+50 TO STA. 2121+00 - R.R.				
26	CROSS SECTIONS - STA. 2122+00 TO STA. 2129+00 - R.R.				
27	CROSS SECTIONS - STA. 2130+00 TO STA. 2133+50 - R.R.				
28	CROSS SECTIONS - STA. 2134+00 TO STA. 2137+25 - R.R.				
29	GUARD FENCE TEMPORARY BARBED WIRE FENCE STANDARD 2113-4 NAME PLATES FOR BRIDGES				
30	STANDARD 1836-2 STANDARD SYMBOLS				
31	PROPOSED COMMUNICATIONS LINE CHANGES				
32	STANDARD 2169-1 WOVEN WIRE FENCE				
33	STANDARD 2114, 1971-3				

STANDARD SPECIFICATIONS - The "Standard Specifications for Road and Bridge Construction," adopted January 2, 1958, and the "Supplemental Specifications," effective MAR. 2, 1964, shall govern the construction of this work.

DESIGN SPECIFICATIONS - American Railway Engineering Association Manual, 1961 Edition.

DESIGN LOADING - Live Load - Cooper E72 with Impact for Diesel Locomotive.

ABUTMENTS, PIERS AND WING WALLS - Foundations carried to rock designed for not more than 50 kips per sq. ft. base pressure.

CONCRETE DESIGN DATA -

Deck:
fc 3,500 P.S.I. ultimate in 14 days
fc 1,400 P.S.I. allowable. Shear & bond govern.

Abutments, Piers & Wing Walls:
fc 3,000 P.S.I. ultimate in 14 days
fc 1,200 P.S.I. allowable
75 P.S.I. max. shear in footing

REINFORCEMENT - Billet steel concrete reinforcement bars, interposed with A.S.T.M. Designation A15. All bars shall be delivered to site in accordance with Designation A305. Allowable tensile unit stress is 20,000 P.S.I. Bar bending, placing, clearance, etc., unless otherwise shown, shall be in accordance with Section 05 of the Standard Specifications.

STRUCTURAL STEEL - Refer to structural steel notes on Sheet No. 11.

FOR INFORMATION ONLY

INDEX OF SHEETS
SUMMARY OF QUANTITIES & P
N.Y.C. R.R. OVER F.A.I. R
PROJECT 16-80-4 (45)
F.A.I. ROUTE 80 - SECTION 1
WILL COUNTY
STATION 685 + 21.21

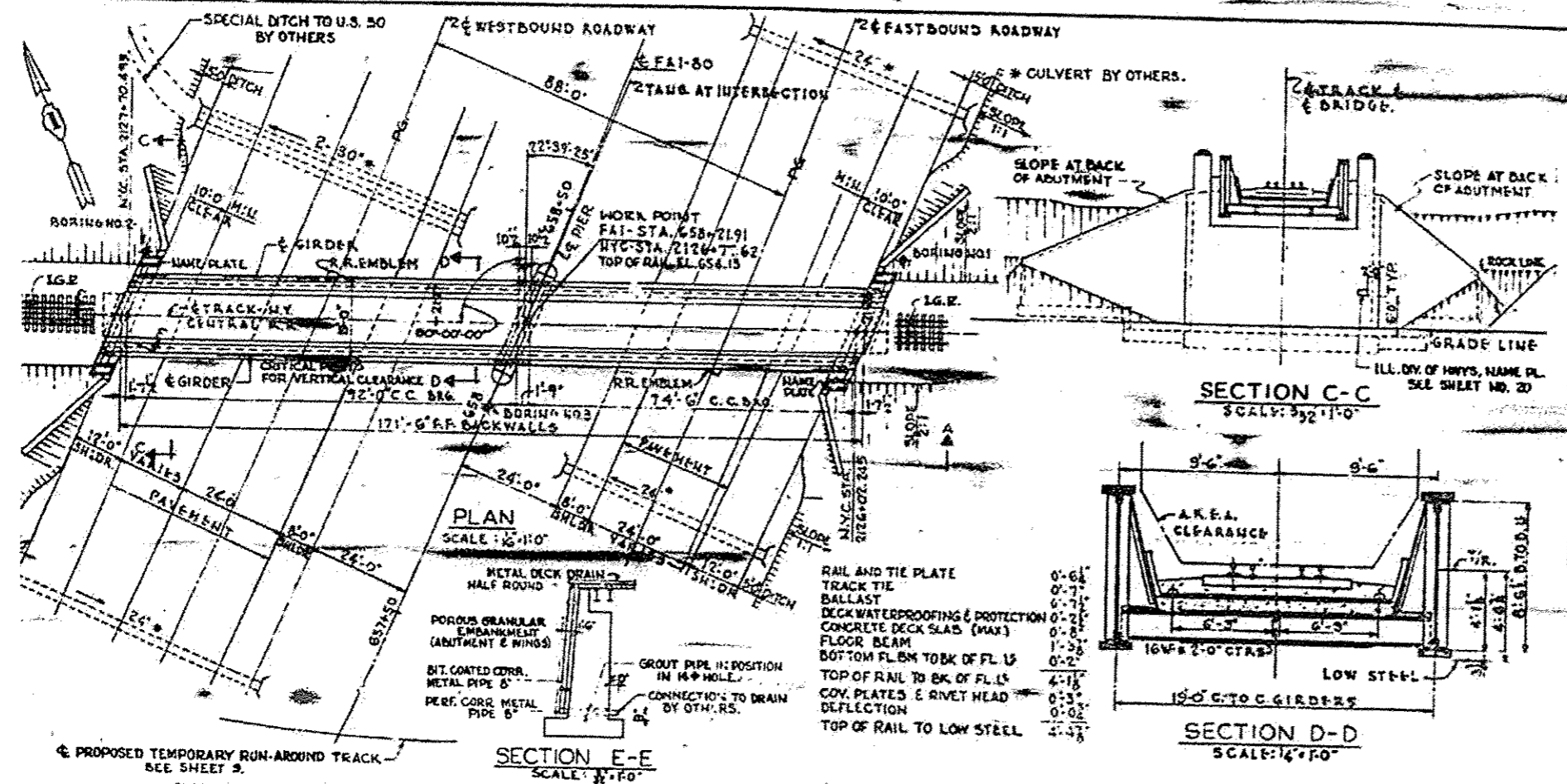
DE LEUW, CATHY & CO., ENGINEERS
CHICAGO, ILLINOIS

SCALE:

1

SHEET ADDED 5-27-16

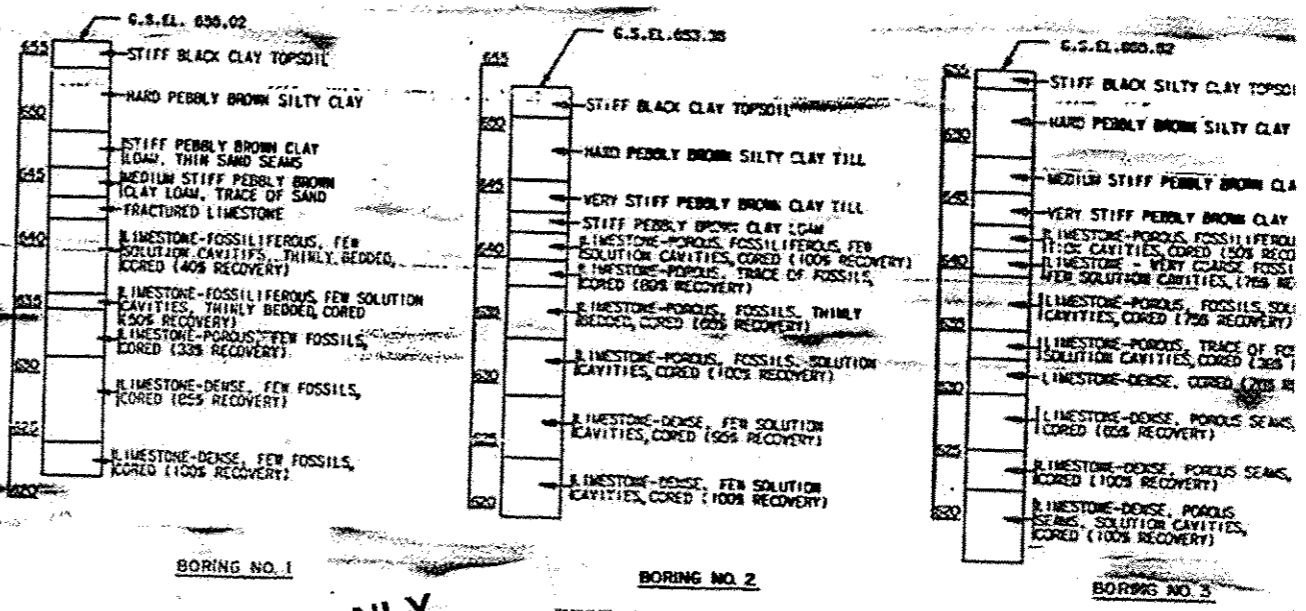
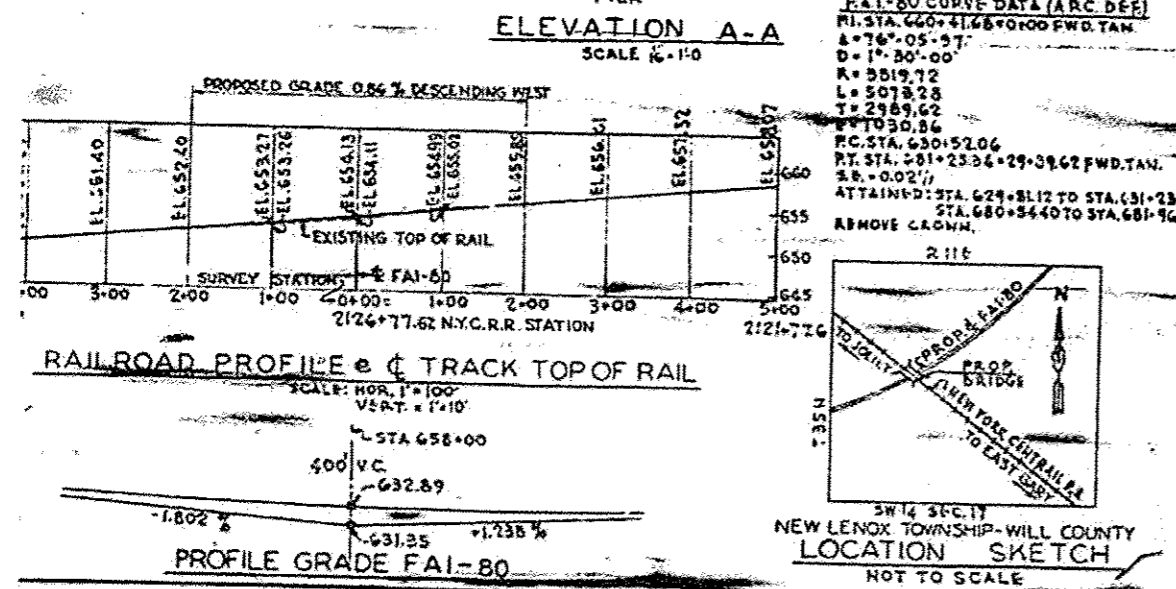
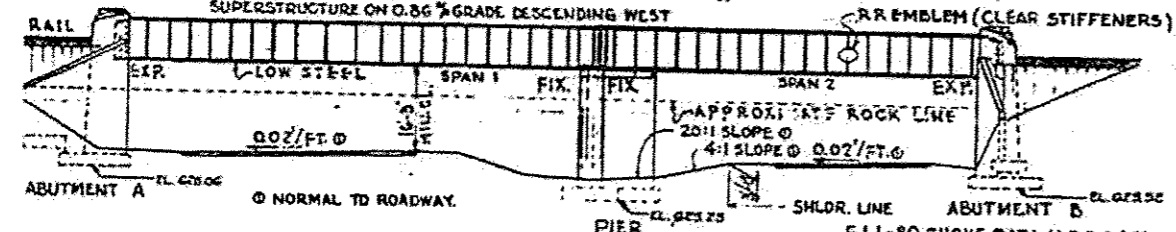
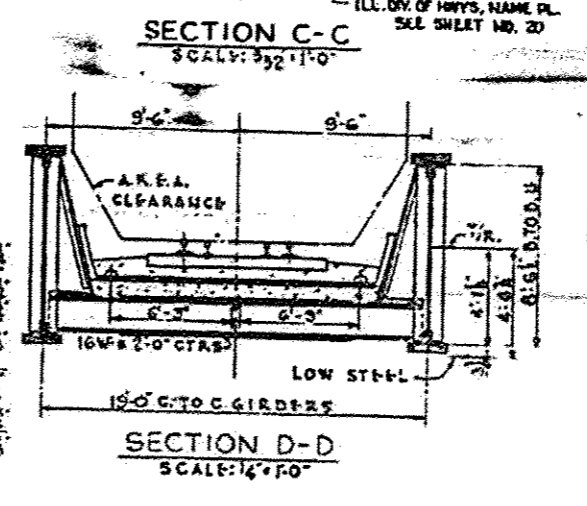
NO.	DATE	BY	REVISION
1	10-2-02	W.C.	ISSUED FOR CONSTRUCTION
2	10-2-02	W.C.	REVISED QUANTITIES
3	10-2-02	W.C.	REVISED QUANTITIES



SCHEDULE OF QUANTITIES FOR BRIDGE

ITEM	QTY	UNIT	AMOUNT	REMARKS
EARTH EXCAVATION	011001	CU. YD.		14,454
ROCK EXCAVATION	011002	CU. YD.		7,295
POROUS GRANULAR EMBANKMENT	019001	CU. YD.	635	
ROCK EXCAV. FOR STRUCTURES	050003	CU. YD.	220	
DECK DRAINS	051306	LIN. FT.	350	
CLASS 2 CONCRETE	052003	CU. YD.	648.3	60.7
MEMBRANE WATERPROOFING	053001	CO. FT.		3,736
FURNISHING & ERECTING STRUCTURAL STEEL	054001	POUND		421,000
REINFORCEMENT BARS	056001	POUND	47,320	10,823
NAME PLATES	061001	EACH	2	
RAILROAD EMBLEM, INSTALLED		EACH		2
PERFORATED CORR. MET. PIPE 8"	063021	LIN. FT.	140	
BITUMINOUS COATED COP 8"	063025	LIN. FT.	73	
GUARD FENCE	068005	LIN. FT.		600

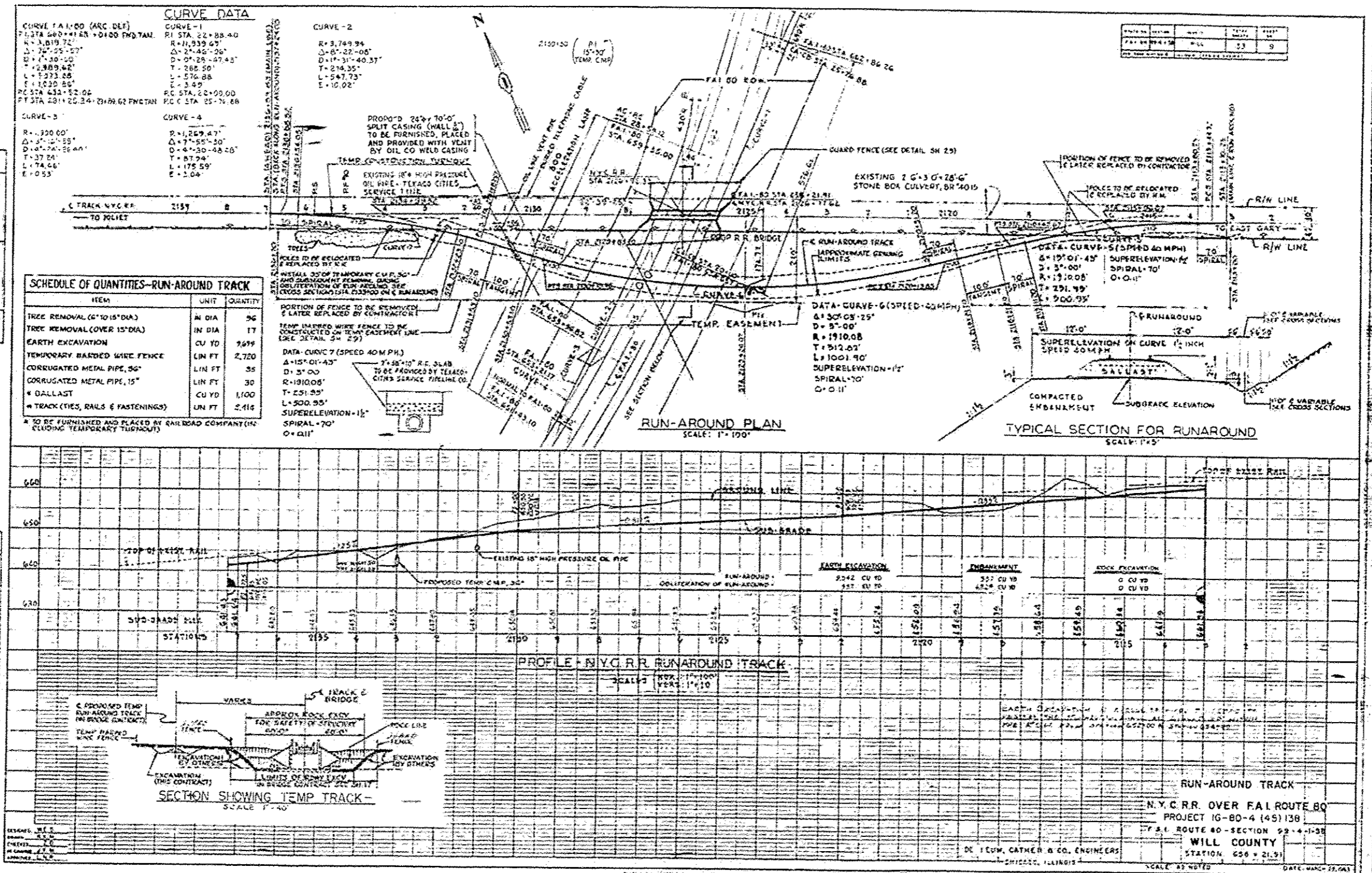
FOR ALL NOTES SEE SHEET NO. 4
FOR RUNNING QUANTITIES SEE SHEET 9



FOR INFORMATION ONLY

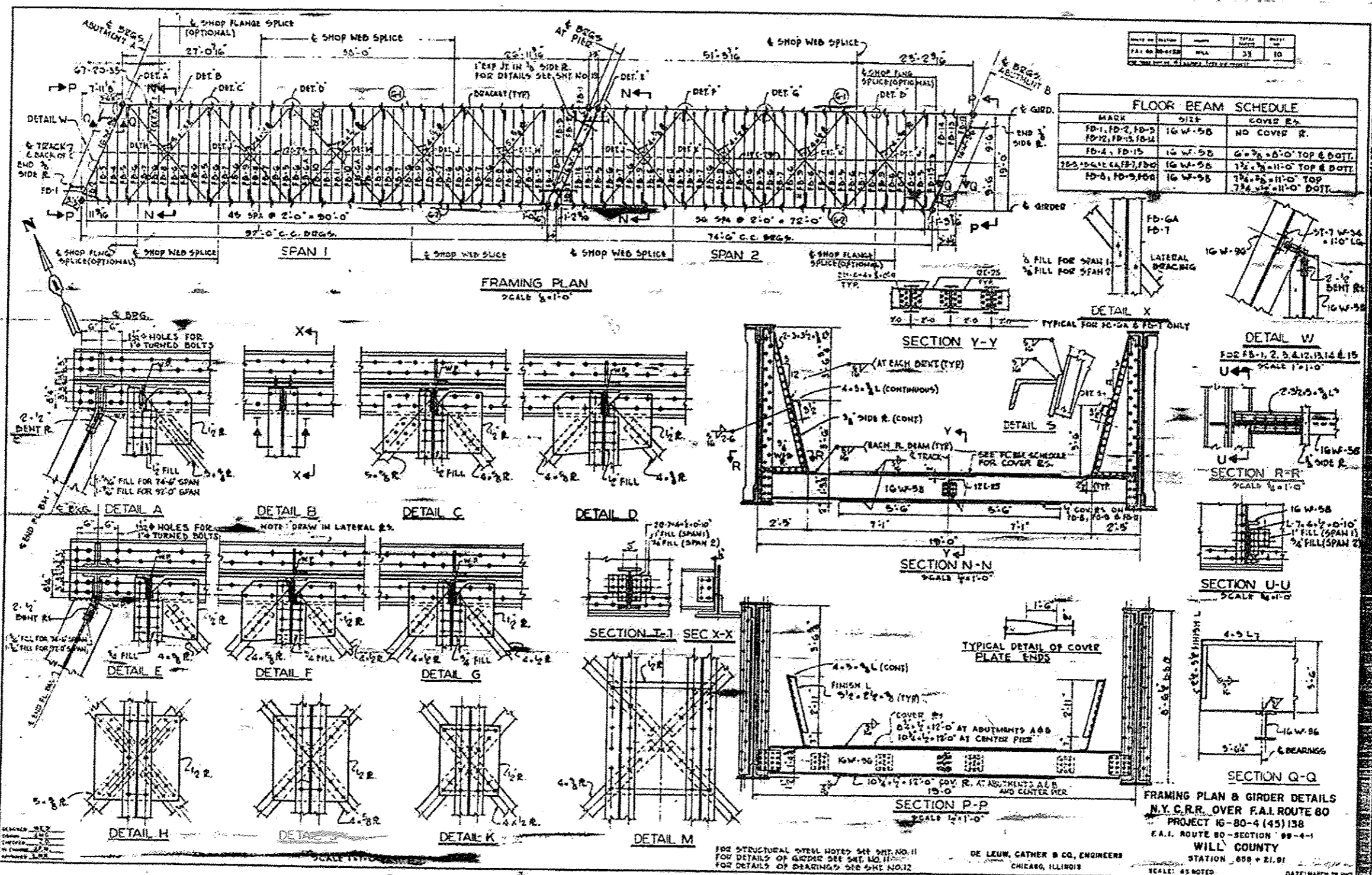
GENERAL PLAN
N.Y.C.R.R. OVER FAI ROUTE
PROJECT 16-80-4 (45) 13
F.A.I. ROUTE 80-SECTION 89-
WILL COUNTY
STATION 688+21.91
SCALE: AS NOTED

LEW, CATHER & CO., ENGINEERS
100 N. WASHINGTON ST., CHICAGO, ILL. 60602
TEL. 312-467-1000



FOR INFORMATION ONLY

1 SHEET ADDED 5-27-16



FLOOR BEAM SCHEDULE		
MARK	SIZE	COVER ES.
FD-1, FD-2, FD-3	16 W-58	NO COVER R.
FD-12, FD-13, FD-14	16 W-58	NO COVER R.
FD-4, FD-15	16 W-58	4" x 2" x 6'-0" TOP & DOTT.
FD-5, FD-6, FD-7, FD-8	16 W-58	7 1/2" x 11'-0" TOP & DOTT.
FD-9, FD-10, FD-11	16 W-58	7 1/2" x 11'-0" TOP & DOTT.

FOR INFORMATION ONLY

1 SHEET ADDED 5-27-16

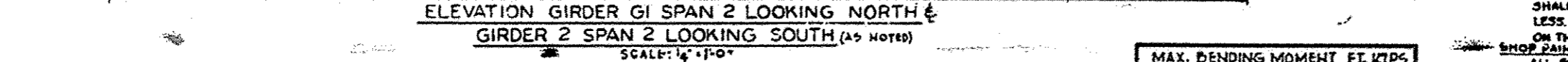
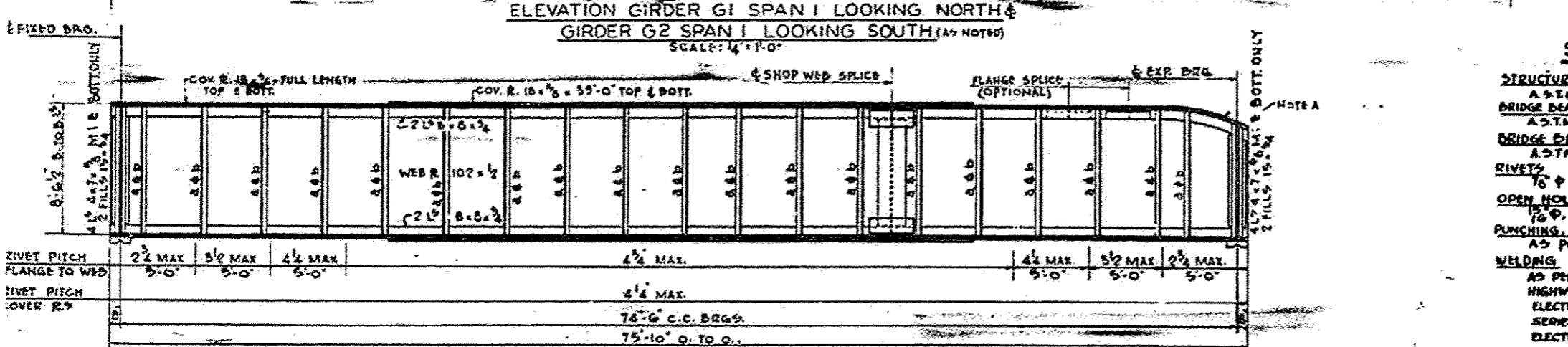
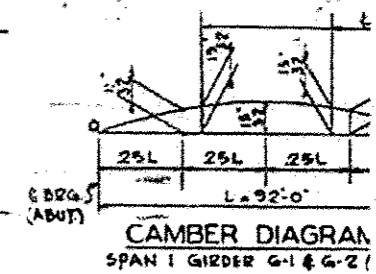
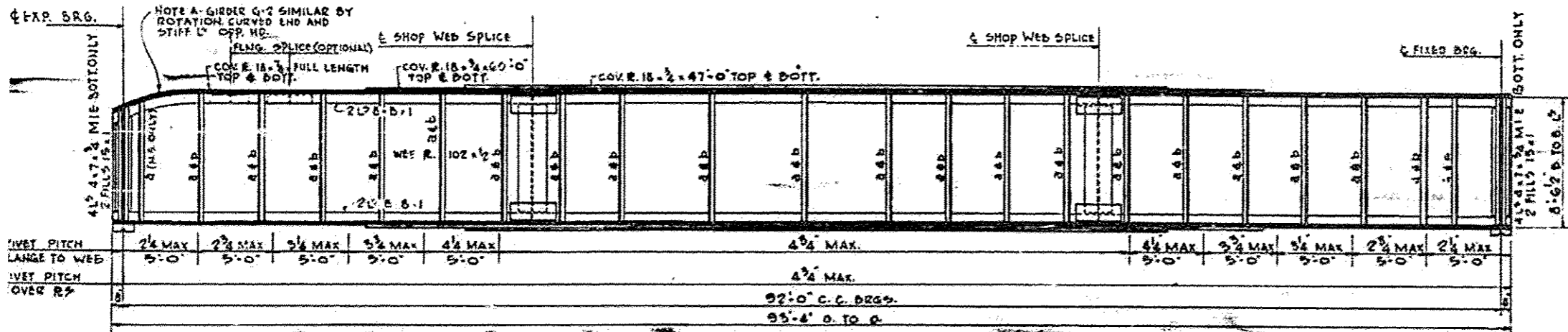
REVISIONS
 NO. DATE BY
 1 11/28/80 JCS
 2 12/10/80 JCS
 3 1/15/81 JCS

FOR STRUCTURAL STEEL NOTES SEE SHEET NO. 11
 FOR DETAILS OF GIRDER SEE SHEET NO. 12
 FOR DETAILS OF BEARING SEE SHEET NO. 12

DE LEUN, CATHY & CO., ENGINEERS
 CHICAGO, ILLINOIS

FRAMING PLAN & GIRDER DETAILS
 N.Y. C.R.R. OVER F.A.I. ROUTE 80
 PROJECT 16-80-4 (45)138
 F.A.I. ROUTE 80-SECTION 99-4-1
 WILL COUNTY
 STATION 658 + 21.91
 SCALE: AS NOTED DATE: MARCH 28, 1980

DATE OF REVISION	BY	TOTAL SHEETS
F.A.I. NO. 10-1-52	WILL	33
REV. NO. 1-1-52	WILL	33



STRUCTURAL STEEL NOTES

STRUCTURAL STEEL
 A 5-M. DESIGNATION A 36 UNLESS OTHERWISE SPECIFIED.
BRIDGE BEARING CASTINGS
 A 5-M. DESIGNATION: A-27 (GRADE 65-55) F.I.
BRIDGE BEARING PINS
 A 5-M. DESIGNATION: A-235, CLASS C1
RIVETS
 7/8"
OPEN HOLES
 1/8" UNLESS OTHERWISE NOTED
PUNCHING, DRILLING AND BEARING
 AS PER AREA SPECIFICATIONS.
WELDING
 AS PER AMERICAN WELDING SOCIETY SPEC'S HIGHWAY AND RAILWAY BRIDGES.
 ELECTRODES CONFORMING TO EITHER THE EG SERIES OF TENTATIVE SPECIFICATIONS FOR MILL ELECTRODES (AWS DESIGNATION A-51, ASTM D6) SHALL BE USED FOR A-36 STEEL IN THICKNESS LESS THAN 5/8". ONLY E70XX LOW-HYDROGEN ELECTRODES ON THICKNESSES OF A-36 STEEL OVER 5/8".
SHOP PAINT
 ALL STEEL SHALL BE GIVEN ONE COAT OF RED LEAD AND TWO COATS OF ALUMINUM PAINT.
FIELD PAINT
 AFTER ERECTION ALL STRUCTURAL STEEL SHALL BE CLEANED AND SPOT PAINTED WITH RED LEAD AND TWO COATS OF ALUMINUM PAINT.

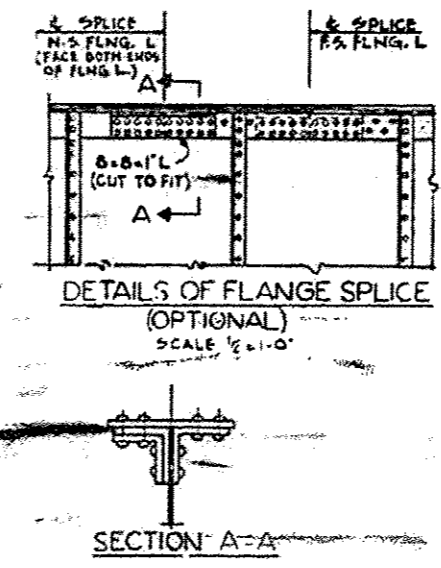
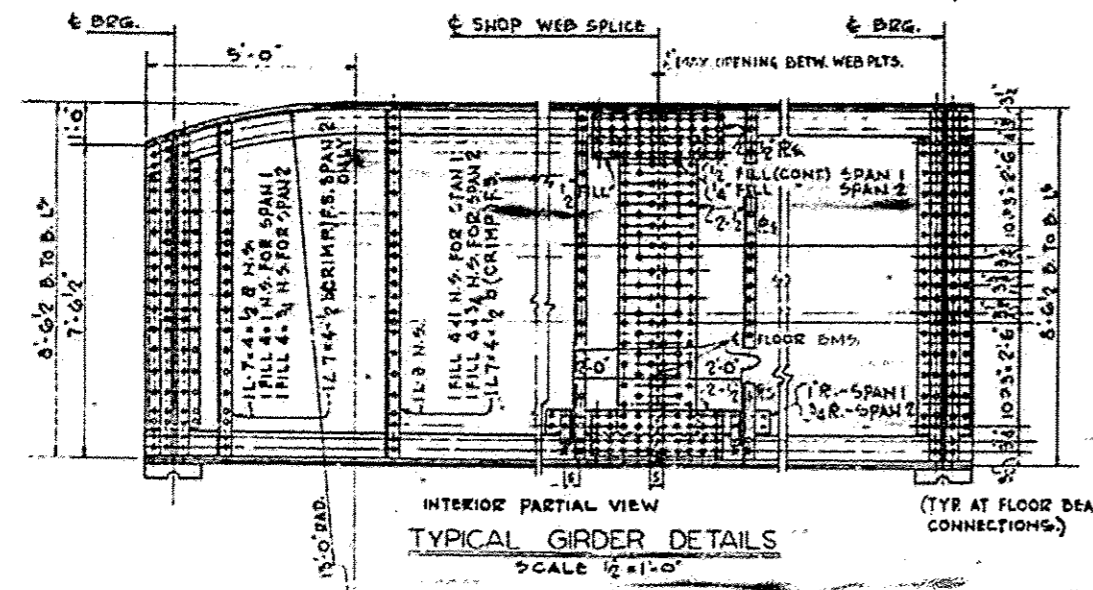
ITEM	SPAN 1	SPAN 2
D.L.	3835.0	2386.0
L.L.	4336.3	3624.3
I	1547.2	1193.7
TOTAL	10879.0	7004.0

NOTE: VALUES GIVEN ARE PER GIRDER

ITEM	SPAN 1	SPAN 2
D.L.	167.0	128.0
L.L.	251.6	210.5
I	77.9	73.4
TOTAL	496.5	411.9

ITEM	UNIT	QUAN
ESTIMATING STRUCTURAL STEEL	POUND	221.6

* QUANTITY INCLUDES 9500 POUNDS OF MISC. STRUCT. 175 POUNDS OF EMBLEM BRACKETS SH. NO. 20 AND OF BEARINGS, SHEET #12 ALSO 40 SQ. FT. COT MASONRY PAD-1/4 THICK.



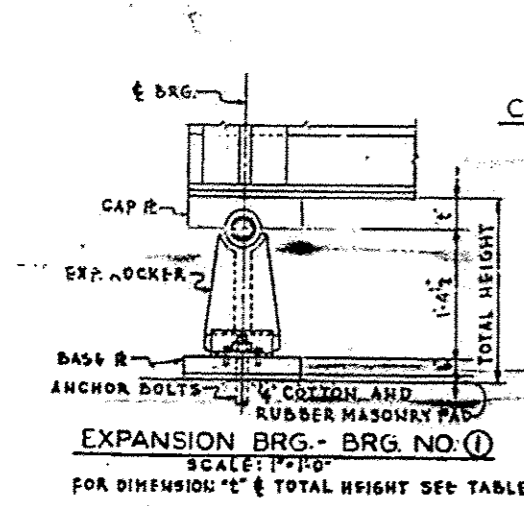
NOTE: FLOOR BEAM CONNECTIONS NOT SHOWN ON BALANCE OF GIRDER, SEE SECTIONS T-T AND U-U SHEET #10

WORK THIS DRAWING WITH SHEET NO. 10 FOR DETAILS OF BEARINGS SEE SHEET NO. 12

DC LEUB, CATNER & CO., ENGINEERS CHICAGO, ILLINOIS
 WILL COU
 STATION 6084
 SCALE: AS NOTED

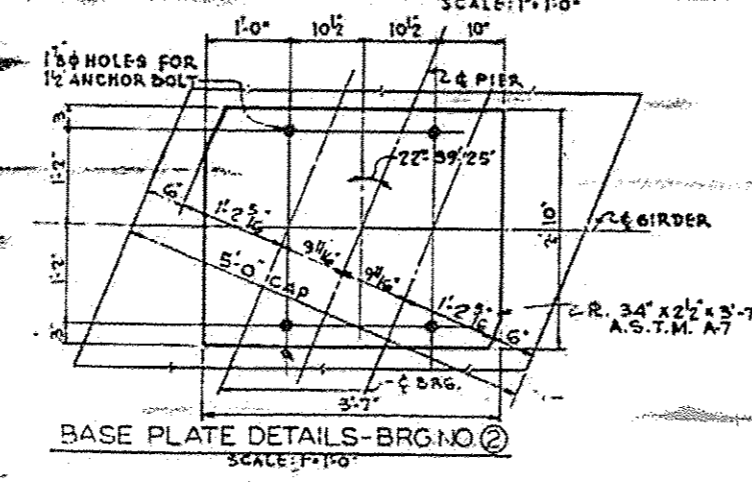
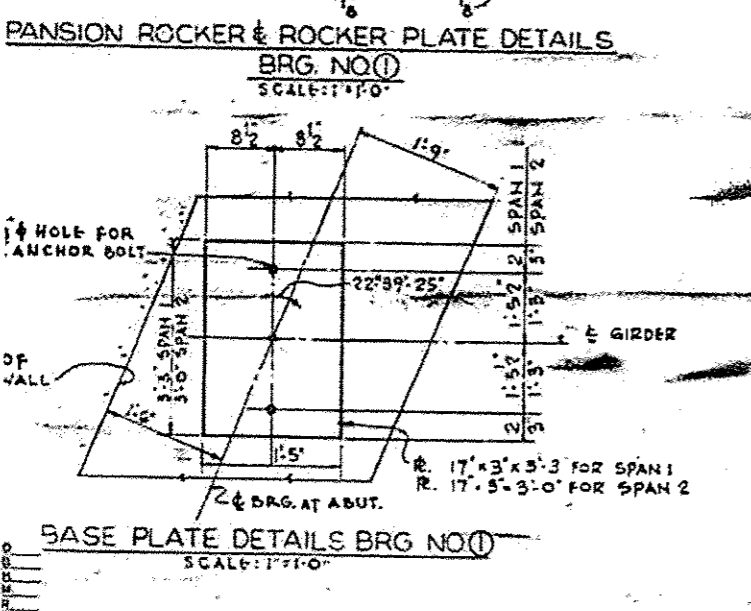
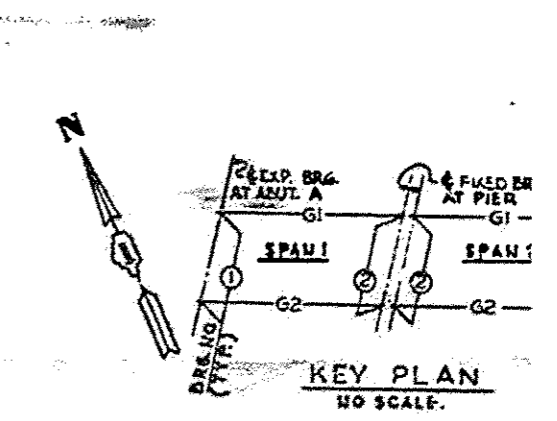
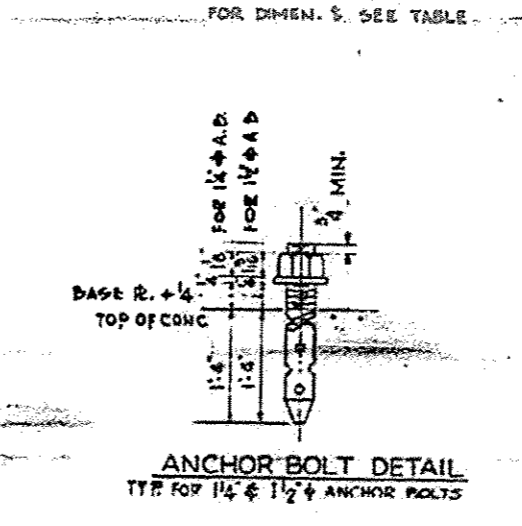
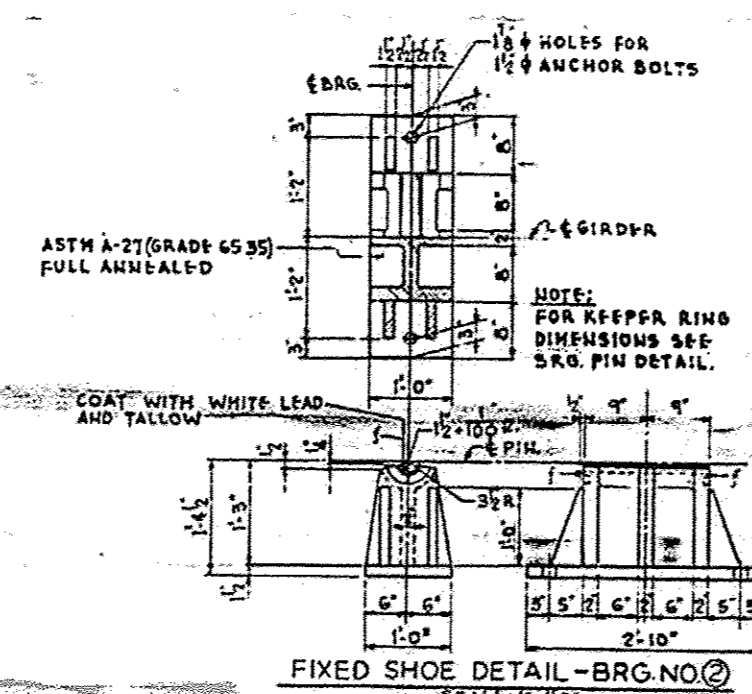
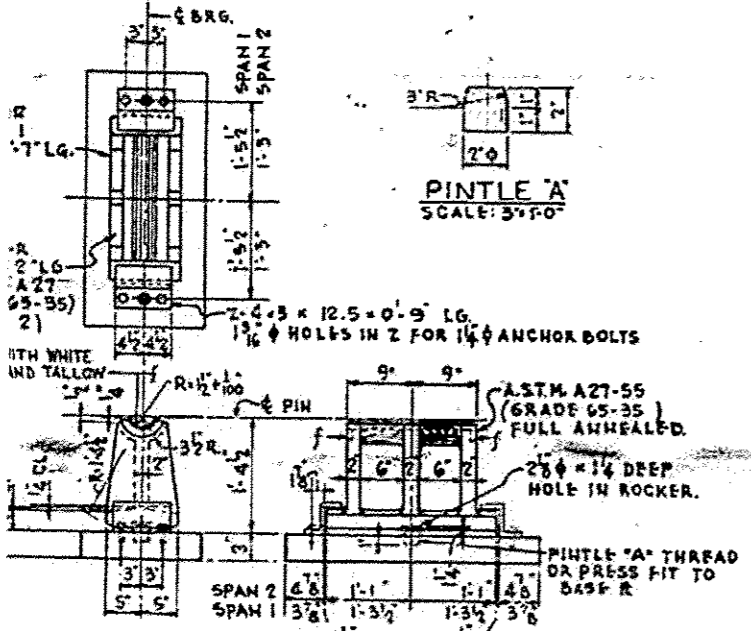
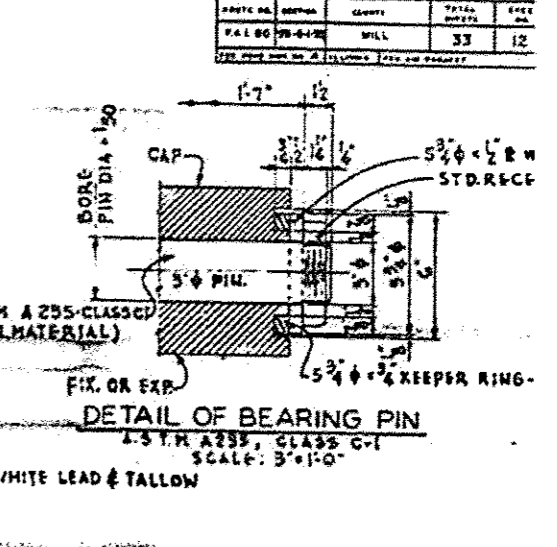
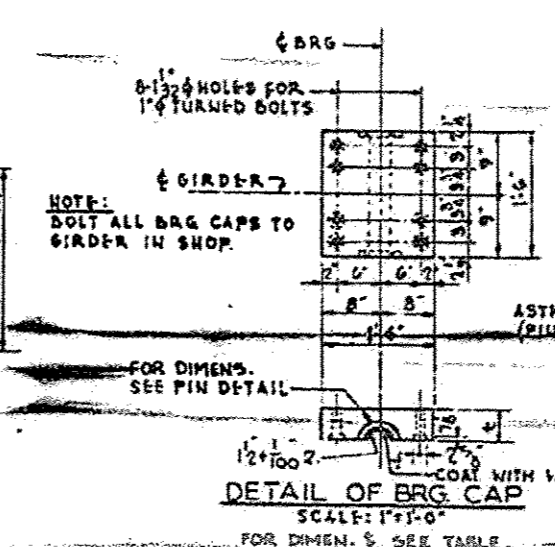
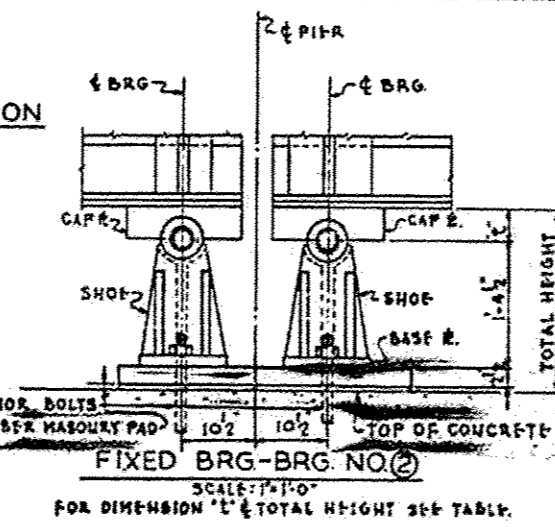
FOR INFORMATION ONLY

DATE	BY	CHKD	TOTAL SHEETS	CURR. SHEET
F.A.I. 80-4-2	WILL		33	12



CAP & BRG. HEIGHT DIMENSION TABLE

SPAN NO.	BRG. NO.	GIRDER NO.	L'	TOTAL HEIGHT
SPAN 1	1	1	3'-3"	1'-10 1/2"
	2	2	3'-3"	1'-10 1/2"
SPAN 2	1	1	4'-6"	1'-11 1/2"
	2	2	3'-4"	1'-10 1/2"

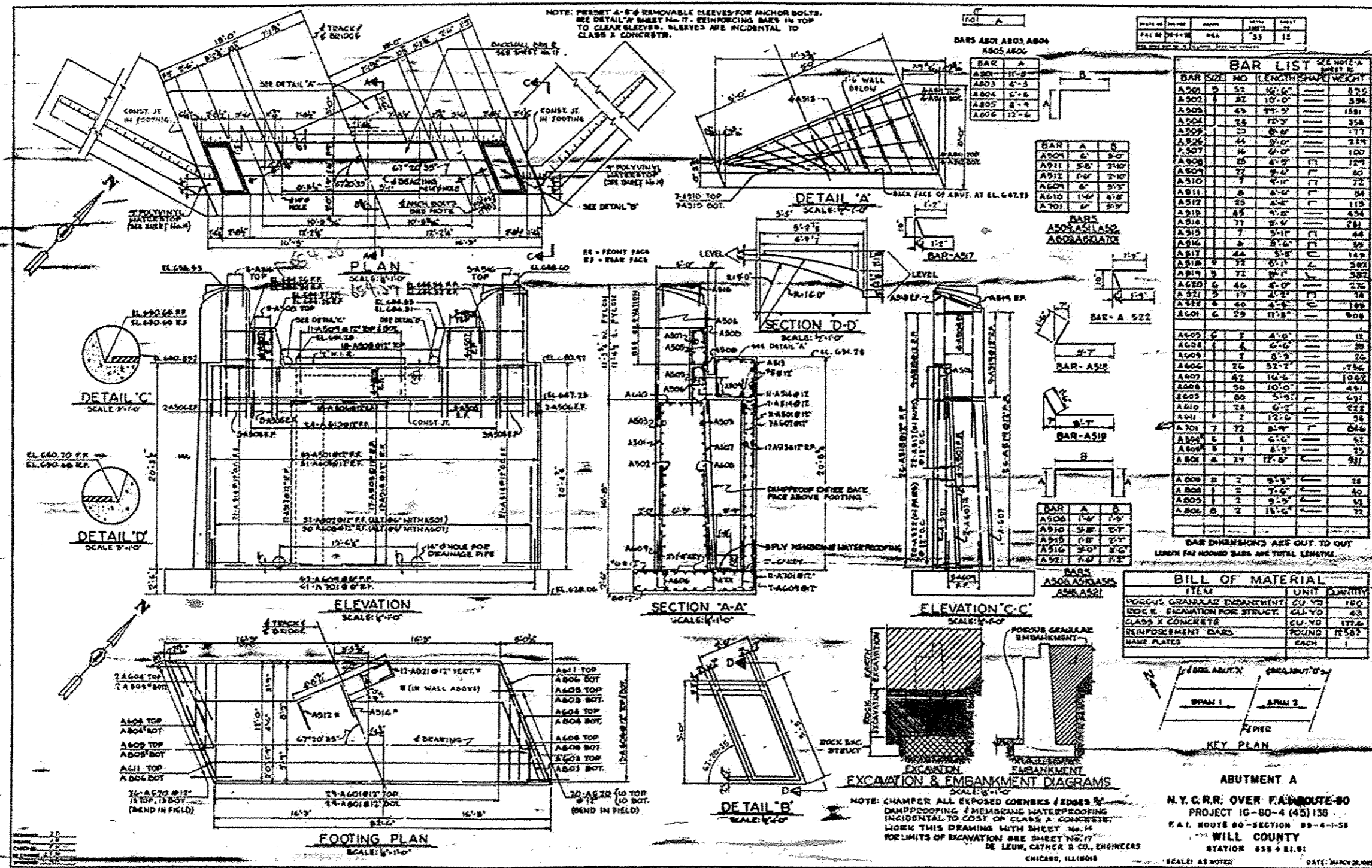


FOR TYPES OF MATERIAL AND BILL OF MATERIAL SEE SHEET "H"

BEARING DETAIL
N.Y.C.R.R. OVER F.A.I.
PROJECT IG-80-4 (4)
F.A.I. ROAD "80" SECTION
WILL COUNTY
STATION 668 + 21.
SCALE: AS NOTED

DE LEUW, CATHEN & CO. ENGINEERS
CHICAGO, ILLINOIS

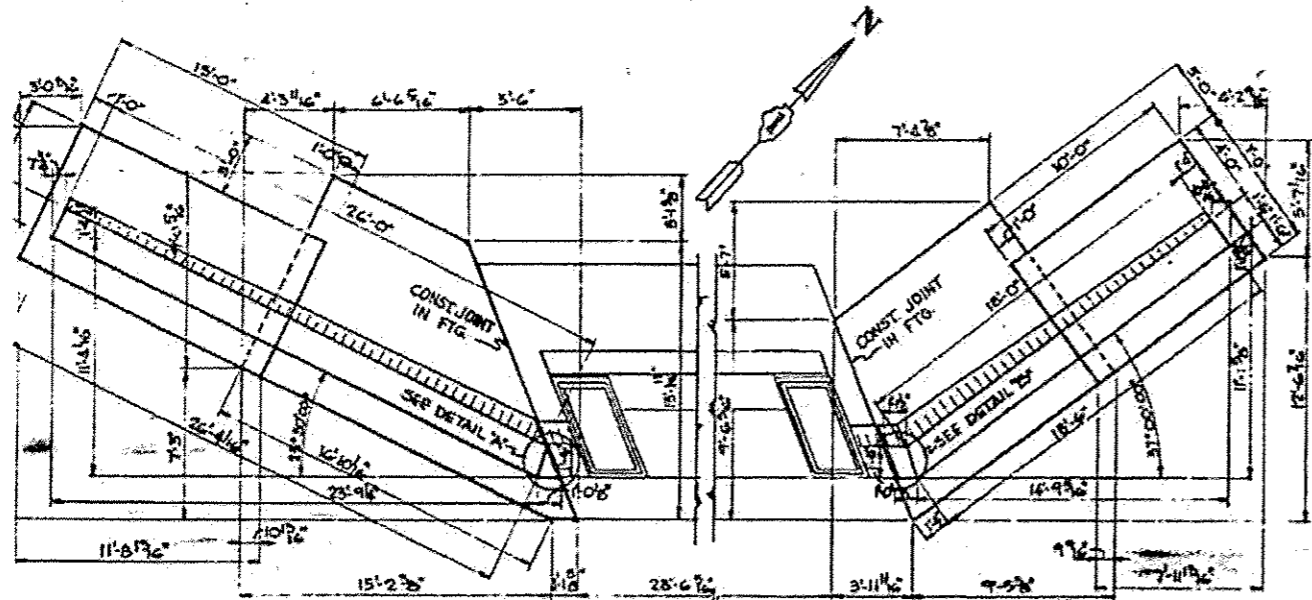
FOR INFORMATION ONLY



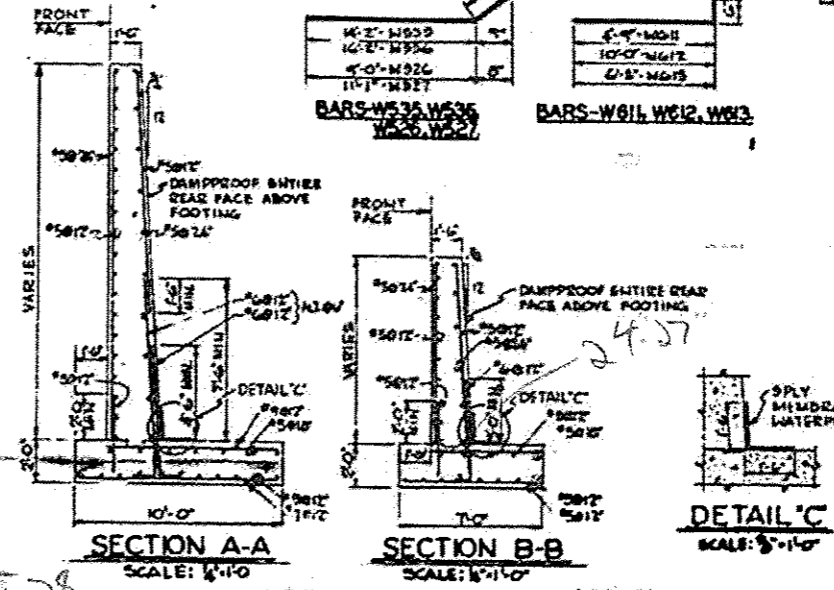
FOR INFORMATION ONLY

1 SHEET ADDED 5-27-16

DATE	NO.	BY	REV.	BY
F.A.I. 80	27-4-106	WILL	33	14



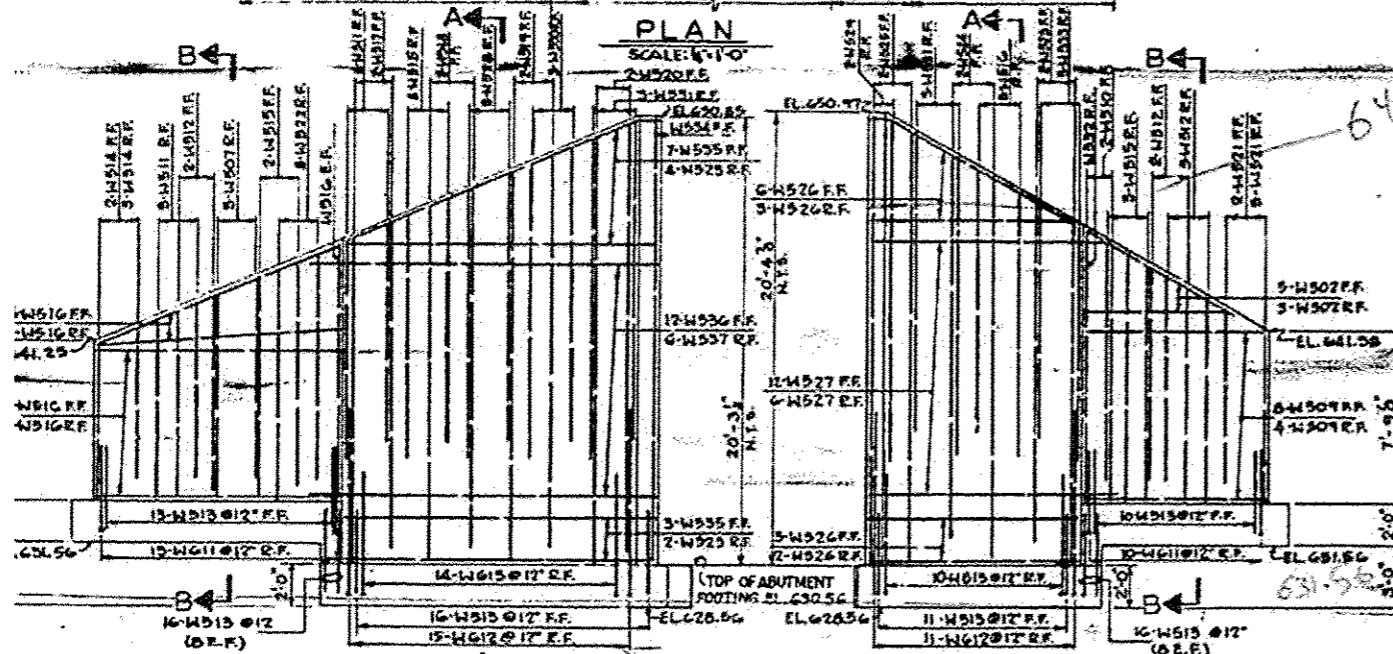
PLAN
SCALE: 1/4"=1'-0"



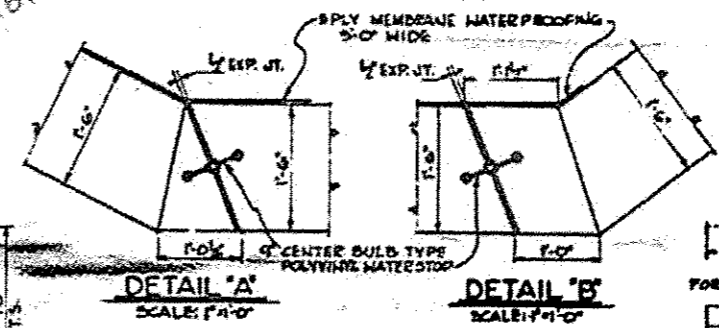
SECTION A-A
SCALE: 1/4"=1'-0"

SECTION B-B
SCALE: 1/4"=1'-0"

DETAIL 'C'
SCALE: 3/4"=1'-0"



FRONT FACE ELEVATION
SCALE: 1/4"=1'-0"

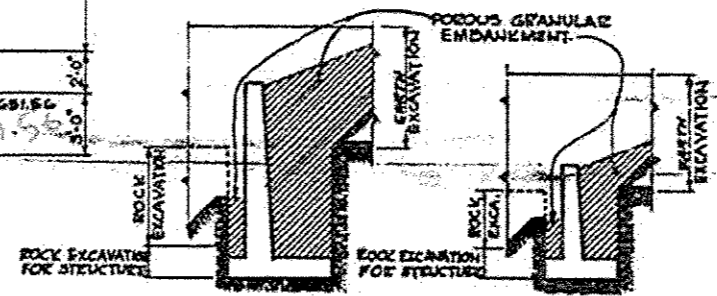


DETAIL 'A'
SCALE: 1/4"=1'-0"

DETAIL 'B'
SCALE: 1/4"=1'-0"

FOR BARS W701-W708

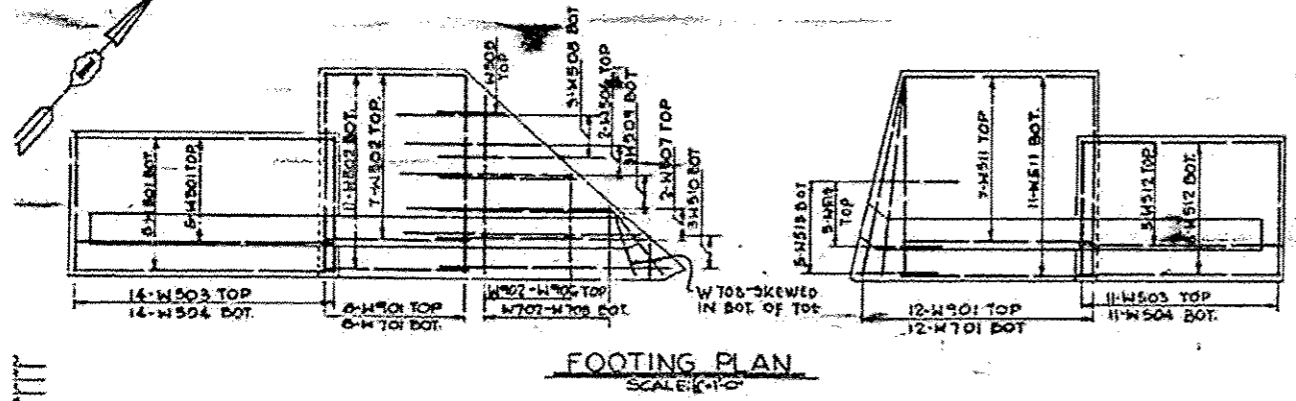
BAR	A
W 701	4-6
W 702	5-4
W 703	5-8
W 704	7-3
W 705	6-3
W 706	5-8
W 707	4-6
W 708	3-4



SECTION A-A
EXCAVATION & EMBANKMENT DIAGRAM

BILL OF MATERIAL		
ITEM	UNIT	QUANTITY
POROUS GRANULAR EMBANKMENT	CU. YD.	130
ROCK EXCAVATION FOR STRUCTURES	CU. YD.	42
CLASS 'X' CONCRETE	CU. YD.	76.0
REINFORCEMENT BARS	POUND	5725

BAR LIS			
BAR SIZE	NO	LENGTHS	
W501	19	12'-0"	
W502	26	7'-0"	
W503	25	9'-0"	
W504	25	6'-0"	
W505	1	5'-0"	
W506	2	6'-0"	
W507	5	10'-0"	
W508	3	8'-0"	
W509	15	8'-0"	
W510	5	11'-8"	
W511	24	9'-0"	
W512	20	9'-0"	
W513	40	2'-0"	
W514	5	7'-6"	
W515	8	10'-0"	
W516	25	11'-4"	
W517	2	12'-4"	
W518	2	16'-2"	
W519	2	17'-4"	
W520	2	19'-3"	
W521	5	7'-0"	
W522	3	10'-0"	
W523	8	15'-3"	
W524	2	17'-3"	
W525	2	19'-0"	
W526	14	9'-0"	
W527	18	11'-11"	
W528	3	11'-0"	
W529	2	15'-0"	
W530	3	12'-4"	
W531	6	15'-4"	
W532	1	12'-0"	
W533	3	9'-4"	
W534	1	20'-0"	
W535	10	19'-0"	
W536	1	17'-0"	
W537	5	6	12'-0"
W701	7	20	10'-6"
W702	1	1	9'-7"
W703	1	1	8'-10"
W704	1	1	8'-1"
W705	1	1	7'-1"
W706	1	1	6'-4"
W707	1	1	5'-4"
W708	7	3	4'-4"
W611	6	25	5'-3"
W612	6	26	10'-6"
W613	6	24	6'-4"
W401	4	20	8'-3"
W402	1	1	7'-6"
W403	1	1	6'-7"
W404	1	1	6'-0"
W405	1	1	5'-0"
W406	4	1	4'-0"



FOOTING PLAN
SCALE: 1/4"=1'-0"

WORK THIS DRAWING WITH 54
WINGWALLS - ABUTME
N.Y. C.R.R. OVER F.A.I. RC
PROJECT 10-80-4 (45) I
F.A.I. ROUTE 60 - SECTION B
WILL COUNTY
STATION 688 + 21.91
SCALE: AS NOTED

DE LEUW, CATHAR & CO., ENGINEERS
CHICAGO, ILLINOIS