

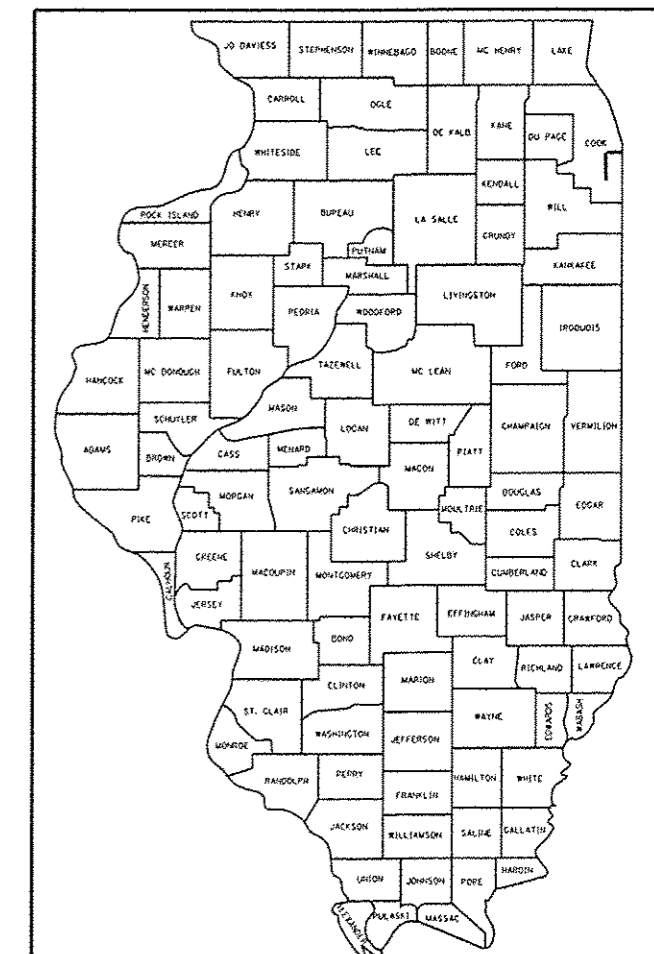
STATE OF ILLINOIS
DEPARTMENT OF TRANSPORTATION

** 19 + 1 = 20 TOTAL SHEETS

F.A.U. RTE.	SECTION	COUNTY	TOTAL SHEETS	SHEET NO.
*	3349-T	COOK	19	1
				ILLINOIS CONTRACT NO. 62B82

* 1) 2688
2) 1600

D-91-152-16



LOCATION OF SECTION INDICATED THUS: - [shaded box] -

FOR INDEX OF SHEETS, SEE SHEET NO. 2

THE IMPROVEMENT IS LOCATED IN THE VILLAGE OF ORLAND PARK

TRAFFIC DATA IL 7

IL 7 (WOLF RD)

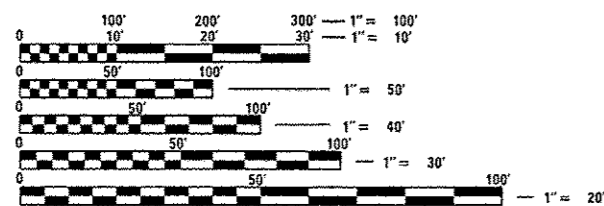
ADT 2015 = 14700
SPEED LIMIT = 45-50 MPH

IL 7 (143rd ST)

ADT 2015 = 1470
SPEED LIMIT = 30 MPH

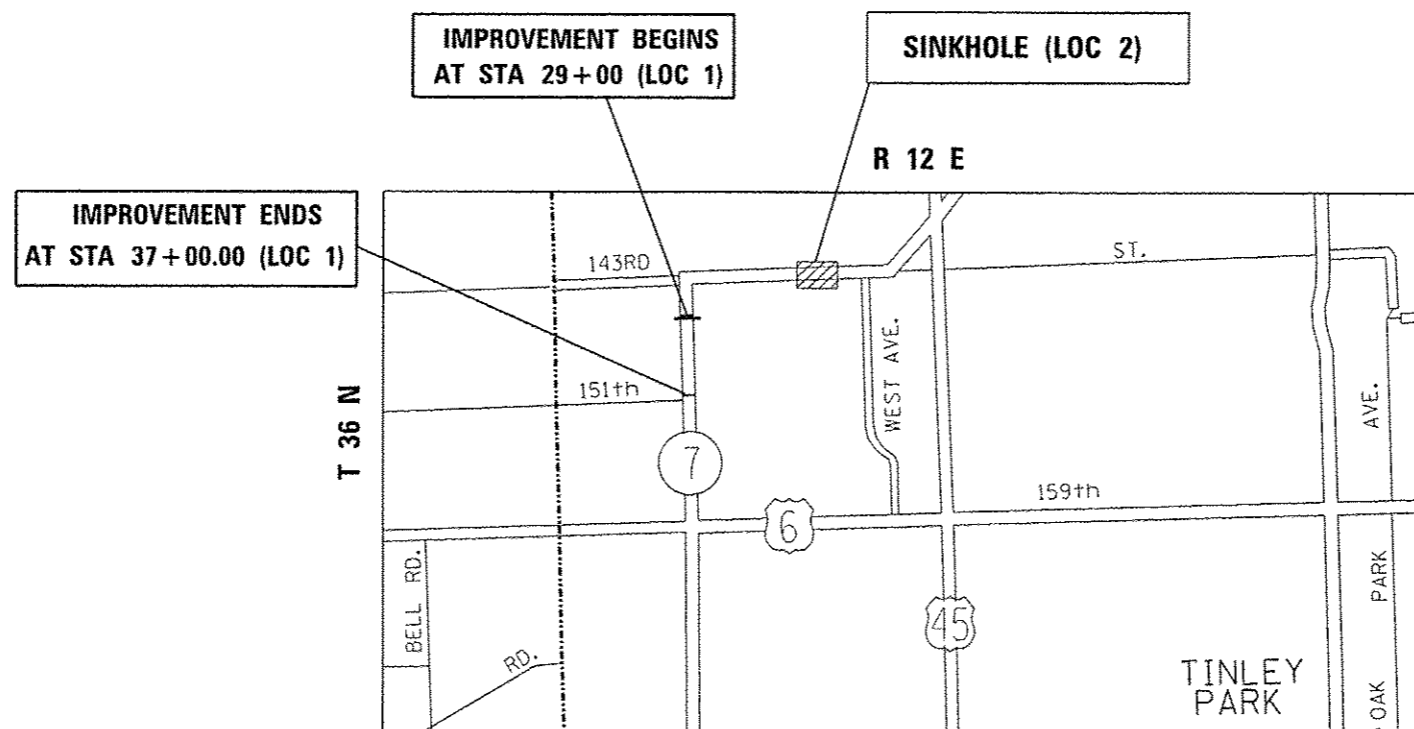
- 1) FAU ROUTE 2688 – IL 7 (WOLF RD) S. OF 143rd ST TO N. OF 151st ST
- 2) FAU ROUTE 1600 – IL 7 (143rd ST) W. OF WEST AVE (SINKHOLE)

SECTION: 3349-T
PROJECT: ACSTP-000V(067)
DRAINAGE IMPROVEMENT
COOK COUNTY
C-91-152-16



FULL SIZE PLANS HAVE BEEN PREPARED USING STANDARD ENGINEERING SCALES. REDUCED SIZED PLANS WILL NOT CONFORM TO STANDARD SCALES. IN MAKING MEASUREMENTS ON REDUCED PLANS, THE ABOVE SCALES MAY BE USED.

J.U.L.I.E.
JOINT UTILITY LOCATION INFORMATION FOR EXCAVATION
1-800-892-0123
OR 811



ORLAND PARK TOWNSHIP
GROSS LENGTH = 800 FT. = 0.152 MILE

PROJECT ENGINEER J. ALAIN MIDY (847) 221-3056
PROJECT MANAGER ISSAM RAYYAN (847) 705-4178

CONTRACT NO. 62B82

STATE OF ILLINOIS
DEPARTMENT OF TRANSPORTATION

SUBMITTED *March 29, 2016*

John F. ...
REGIONAL ENGINEER

May 6, 2016
Maureen M. Addis, P.E.
ENGINEER OF DESIGN AND ENVIRONMENT

May 16, 2016
...
DIRECTOR OF PROGRAM DEVELOPMENT

PRINTED BY THE AUTHORITY OF THE STATE OF ILLINOIS

SUMMARY OF QUANTITIES			URBAN	80% FED 20% STATE		CONSTRUCTION TYPE CODE 0044					
CODE NO	ITEM	UNIT	TOTAL QUANTITIES	LOC. 1 0044	LOC. 2 0044						
* 66900450	SPECIAL WASTE PLANS AND REPORTS	LSUM	1	1							
67000400	ENGINEER'S FIELD OFFICE, TYPE A	CAL MO	2	1	1						
67100100	MOBILIZATION	LSUM	1	0.5	0.5						
70100450	TRAFFIC CONTROL AND PROTECTION, STANDARD 701201	LSUM	1	1							
70102620	TRAFFIC CONTROL AND PROTECTION, STANDARD 701501	LSUM	1	1							
70300150	SHORT TERM PAVEMENT MARKING REMOVAL	SQ FT	208		208						
70300520	PAVEMENT MARKING TAPE, TYPE III 4"	FOOT	825		825						
70400100	TEMPORARY CONCRETE BARRIER	FOOT	162.5		162.5						
70600242	IMPACT ATTENUATORS, TEMPORARY (NON-REDIRECTIVE, NARROW), TEST LEVEL 2	EACH	2		2						
* 78000200	THERMOPLASTIC PAVEMENT MARKING - LINE 4"	FOOT	556	20	536						
* 78000600	THERMOPLASTIC PAVEMENT MARKING - LINE 12"	FOOT	36		36						
78100300	REPLACEMENT REFLECTOR	EACH	7		7						
78300100	PAVEMENT MARKING REMOVAL	SQ FT	490		490						
X2020110	GRADING AND SHAPING SHOULDERS	UNIT	0.08	0.08							
* SPECIALTY ITEM											

SUMMARY OF QUANTITIES			URBAN	80% FED 20% STATE		CONSTRUCTION TYPE CODE					
CODE NO	ITEM	UNIT	TOTAL QUANTITIES	LOC. 1 0044	LOC. 2 0044						
X6040205	FRAMES AND LIDS, SPECIAL	EACH	1		1						
X7010216	TRAFFIC CONTROL AND PROTECTION, (SPECIAL)	LSUM	1		1						
X7040125	PINNING TEMPORARY CONCRETE BARRIER	EACH	33		33						
Z0030850	TEMPORARY INFORMATION SIGNING	SQ FT	115.4	51.4	64						

FILE NAME :	USER NAME : mdy/ja	DESIGNED -	REVISED -
OFFICE: CH2M HILL	PROJECT: I-55/26/CAO/INT-DESIGN-DIS24	CHECKED -	REVISED -
PLOT SCALE : 100,0000' / in.	DATE -	CHECKED -	REVISED -
PLOT DATE : 3/31/2016	DATE -	CHECKED -	REVISED -

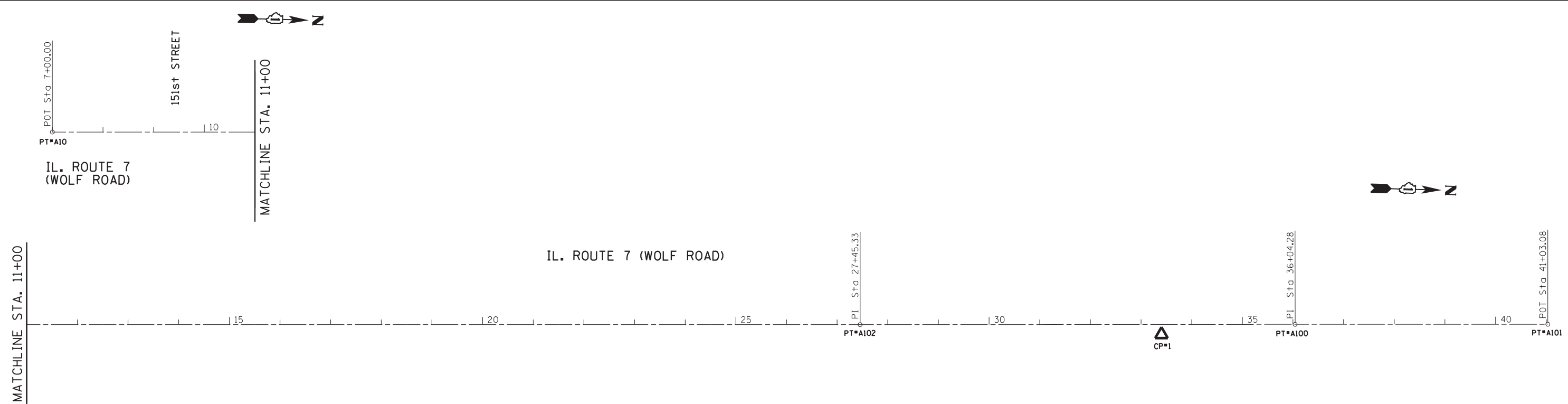
**STATE OF ILLINOIS
DEPARTMENT OF TRANSPORTATION**

SUMMARY OF QUANTITIES			
SCALE:	SHEET NO. OF	SHEETS	STA. TO STA.

F.A.U. RTE.	SECTION	COUNTY	TOTAL SHEETS	SHEET NO.
*	3349-T	COOK	19	4
FED. ROAD DIST. NO. 1 [ILLINOIS] FED. AID PROJECT			CONTRACT NO. 62B82	

M

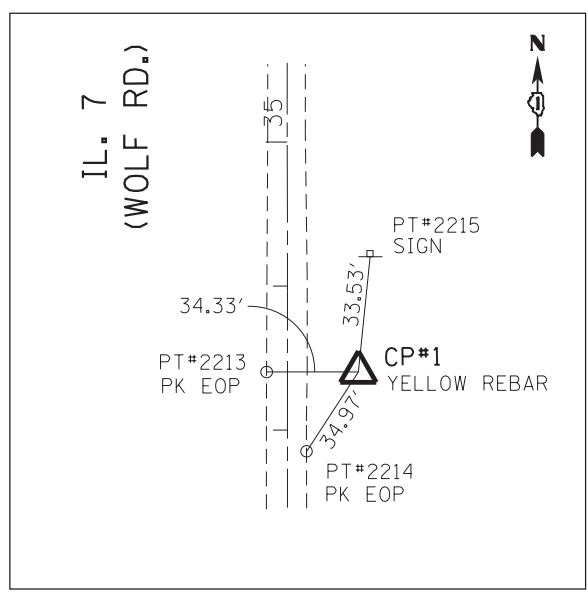
*2688
1600



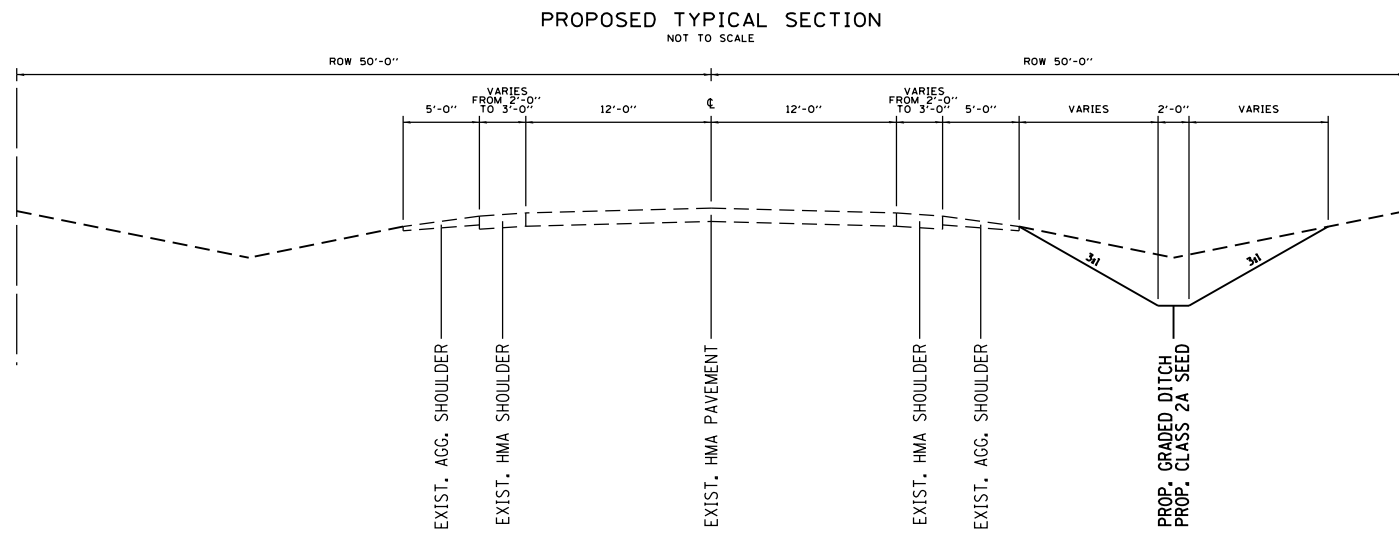
IL. 7 (WOLF RD.)	PT#	N	E	STA.
	A10	1802442.1620	1104966.2937	7+00
	A102	1804486.6866	1104909.0063	27+45.33
	A100	1805345.2916	1104884.3859	36+04.28
	A101	1805843.8888	1104870.2224	41+03.08

BENCHMARK

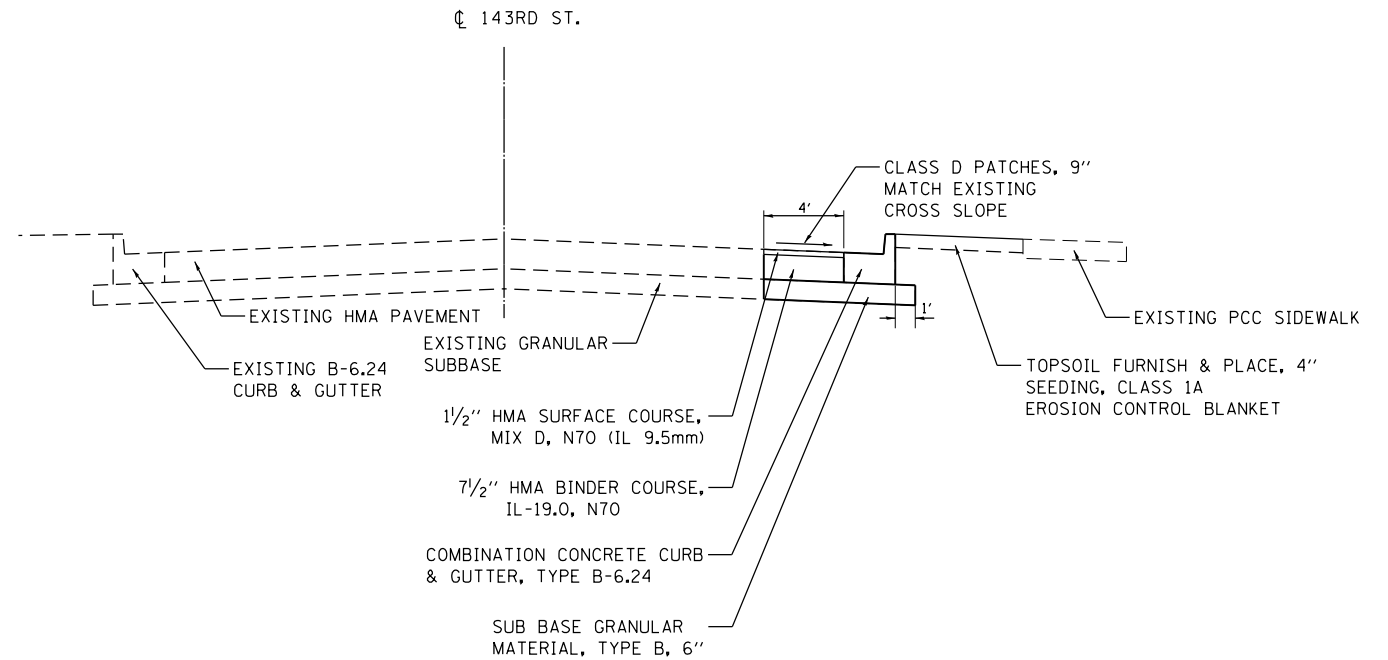
YELLOW SPIKE W/ NAIL IN POWER POLE
WEST SIDE OF WOLF RD. 50' SOUTH OF DITCH



CP#1
REBAR/YELLOW CAP
N 1805082.0291
E 1104911.5690



**PROPOSED TYPICAL SECTION
WOLF RD**



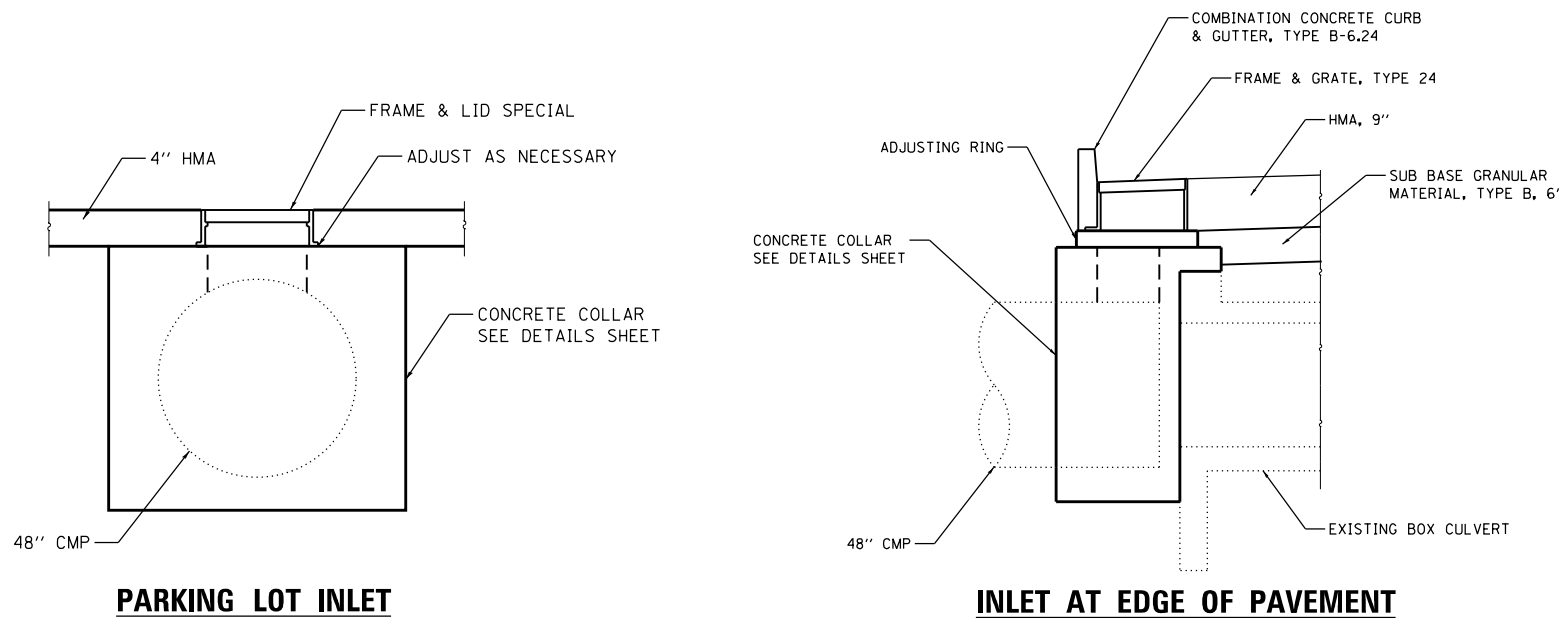
**PROPOSED TYPICAL SECTION
143rd ST**

HMA MIXTURE REQUIREMENTS CHART

OPERATION	MIXTURE TYPE	AIR VOIDS (%) @ Ndes	QUALITY MANAGEMENT PROGRAM (QMP)
CLASS D PATCHES, TYPE II, 4" (PARKING LOT)	HMA SURFACE COURSE, MIX "D", N70 (IL 9.5 mm), 1 1/2" HMA BINDER COURSE, IL-19.0 mm, N70, 2 1/2"	4% @ 70 GYR. 4% @ 70 GYR.	QC/OA QC/OA
CLASS D PATCHES, TYPE II, 9" (143RD STREET)	HMA SURFACE COURSE, MIX "D", N70 (IL 9.5 mm), 1 1/2" HMA BINDER COURSE, IL-19.0 mm, N70, 7 1/2"	4% @ 70 GYR. 4% @ 70 GYR.	QC/OA QC/OA
CLASS D PATCHES, TYPE II, 12" (WOLF STREET)	HMA SURFACE COURSE, MIX "D", N70 (IL 9.5 mm), 1 1/2" HMA BINDER COURSE, IL-19.0 mm, N70, 10 1/2"	4% @ 70 GYR. 4% @ 70 GYR.	QC/OA QC/OA
QMP DESIGNATION: QUALITY CONTROL/QUALITY ASSURANCE (QC/OA)			

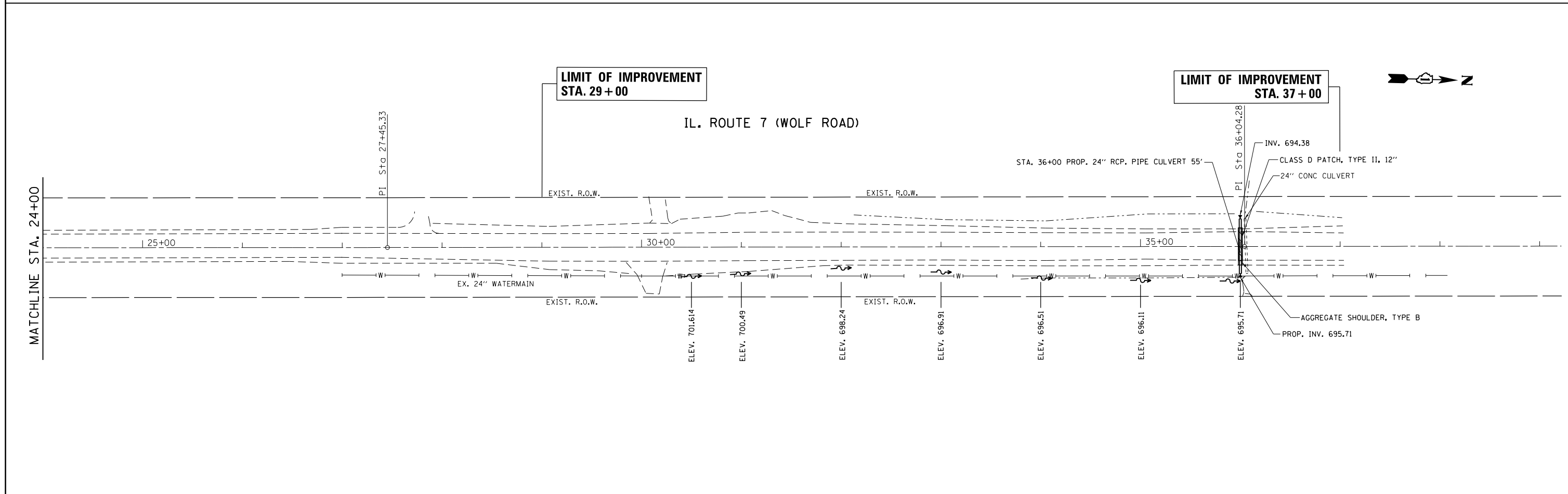
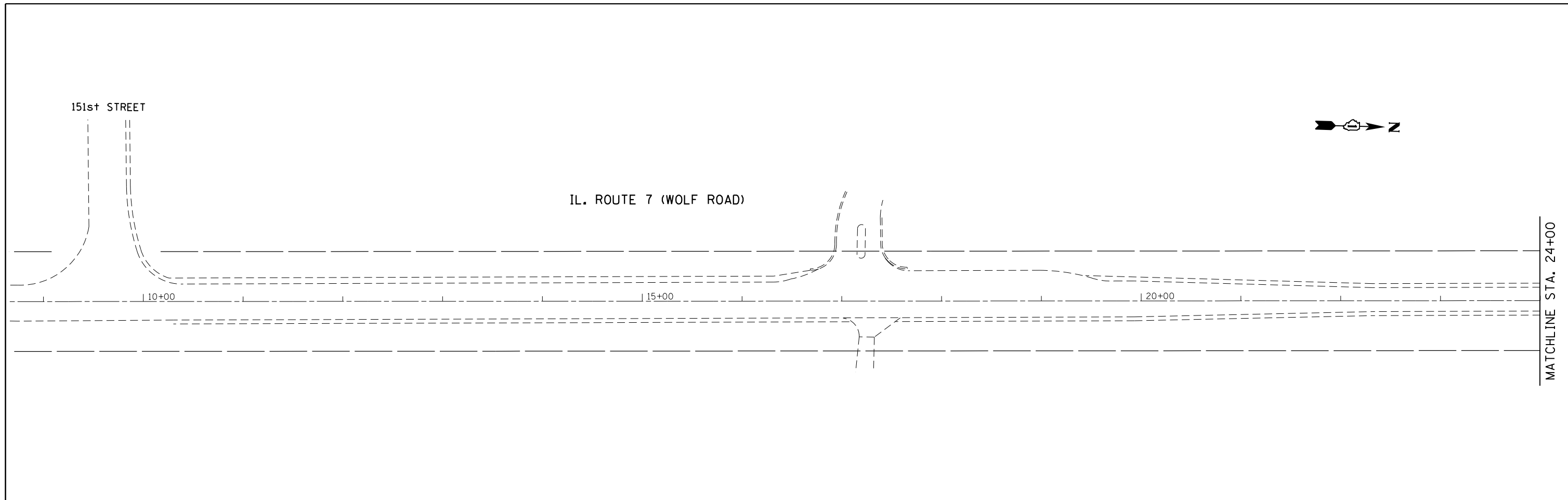
NOTES:

1. THE UNIT WEIGHT USED TO CALCULATE ALL HMA MIXTURE QUANTITIES IS 112 LBS/SQ YD/IN
2. FOR NON-POLYMERIZED HMA MIXTURES THE "AC TYPE" SHALL BE "PG 64-22" UNLESS MODIFIED BY DISTRICT ONE SPECIAL PROVISIONS.
3. FOR USE OF RECYCLED MATERIALS, SEE DISTRICT ONE SPECIAL PROVISIONS.
4. QUALITY MANAGEMENT PROGRAM (QMP) IDENTIFIES THE PARTICULAR QUALITY CONTROL SPECIFICATION THAT APPLIES TO THE HMA MIXTURE.



PARKING LOT INLET

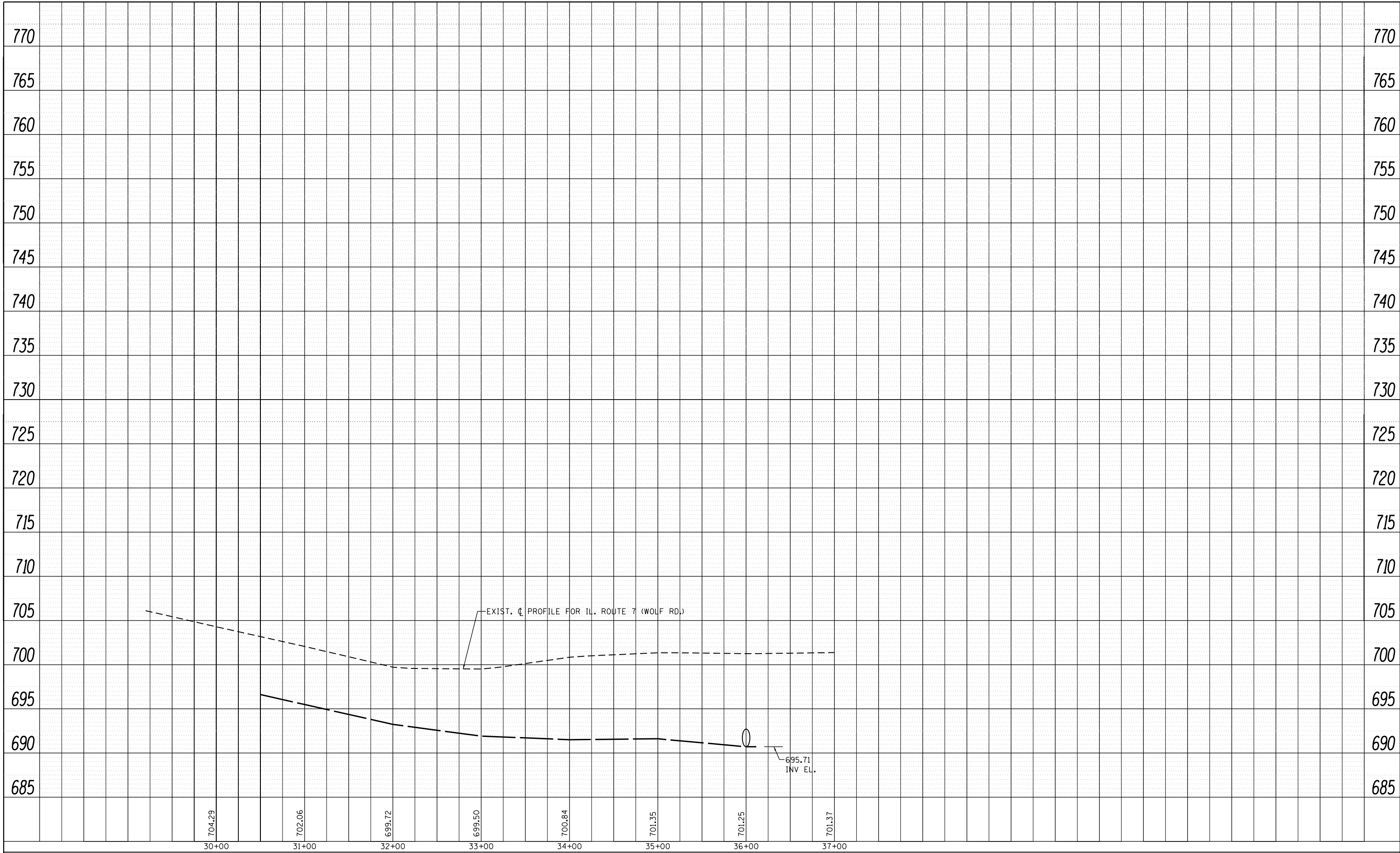
INLET AT EDGE OF PAVEMENT



FILE NAME =	USER NAME = midyja	DESIGNED -	REVISED -	STATE OF ILLINOIS DEPARTMENT OF TRANSPORTATION	DRAINAGE AND UTILITIES PLAN IL. ROUTE 7 (WOLF RD.) 143rd ST TO 151st ST.	F.A.U. RTE.	SECTION	COUNTY	TOTAL SHEETS	SHEET NO.	
pw:\IL\084EBIDINTEG\illinois.gov\PWIDOT\Documents\IDOT Offices\District 1\Projects\DI15216\Drawings\CADsheets\DI15216-shd-drain.dgn		CHECKED -	REVISED -			2688	3349-T	COOK	19	6	
Default	PLOT SCALE = 100.0000' / in.	DATE -	REVISED -			CONTRACT NO. 62B82					
	PLOT DATE = 3/31/2016					ILLINOIS FED. AID PROJECT					

PLAN	SURVEYED	BY	DATE
NOTE BOOK NO.	PLOTTED		
	ALIGNMENT		
	CHECKED		
	CAD FILE NAME		

PROFILE	SURVEYED	BY	DATE
NOTE BOOK NO.	GRADES CHECKED		
	STRUCTURE		
	NOT AT THIS OFFICE		

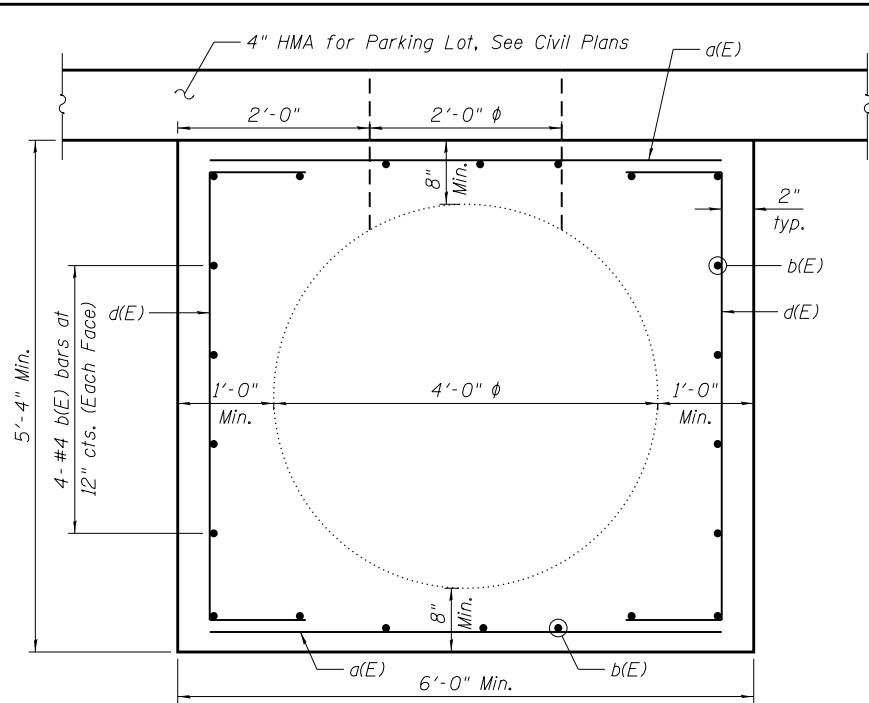


FILE NAME =	USER NAME = midyja	DESIGNED -	REVISED -
p:\1\084EBIDINTEG\Illinois.gov\PI\DOT\Documents\DOT Offices\District 1\Projects\DI15216\DRAWING\CAD\Sheets\DI15216-shd-drain.dgn		DRAWN -	REVISED -
	PLOT SCALE = 100.0000' / in.	CHECKED -	REVISED -
Default	PLOT DATE = 3/31/2016	DATE -	REVISED -

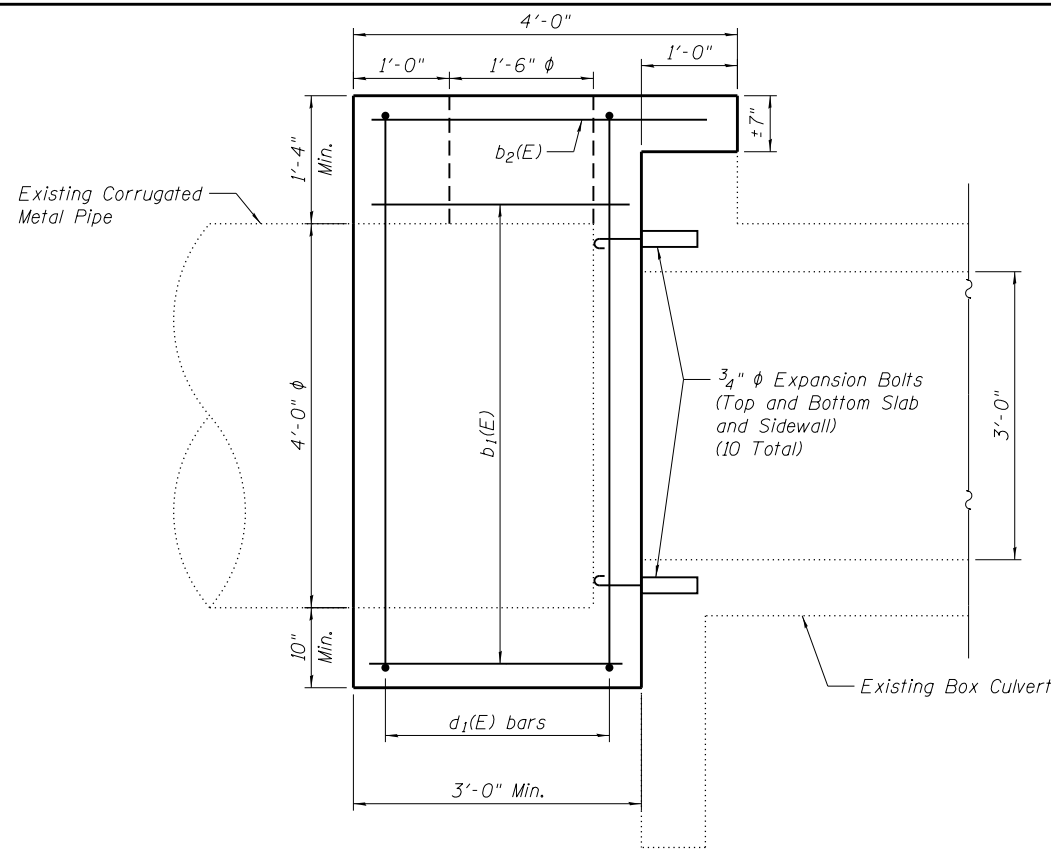
**STATE OF ILLINOIS
DEPARTMENT OF TRANSPORTATION**

DRAINAGE PROFILE			
IL. ROUTE 7 (WOLF RD.) 143rd ST. TO 151st ST.			
SCALE: 1"=50'	SHEET	OF	SHEETS
	STA.		TO STA.

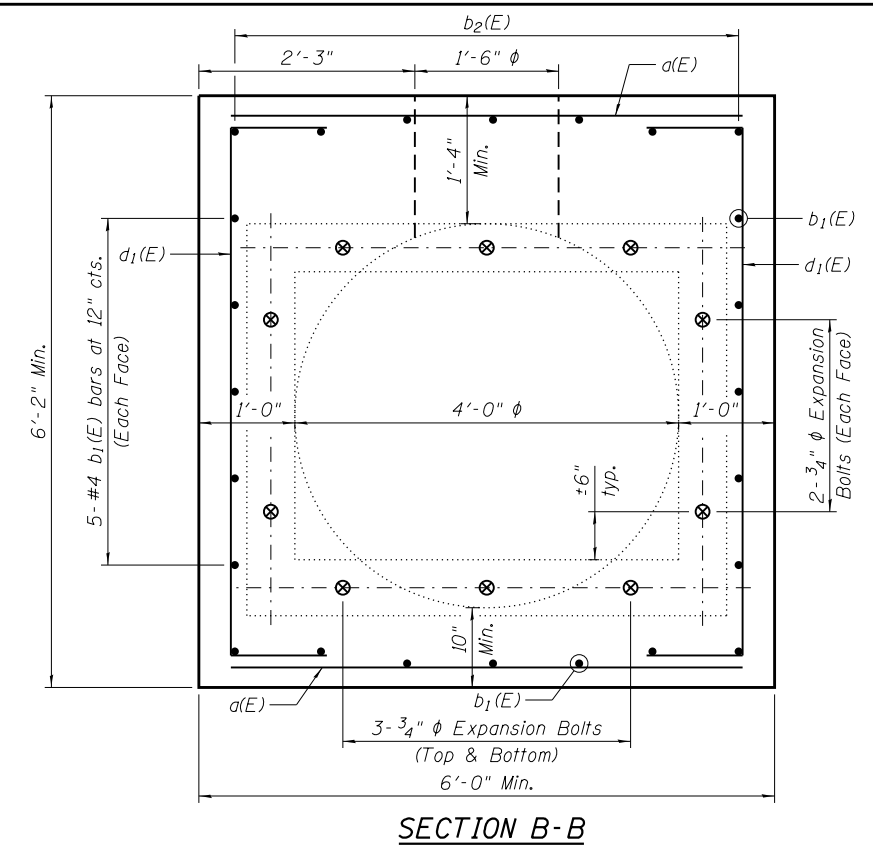
F.A.U. RTE.	SECTION	COUNTY	TOTAL SHEETS	SHEET NO.
2688	3349-T	COOK	19	7
CONTRACT NO. 62B82				
ILLINOIS FED. AID PROJECT				



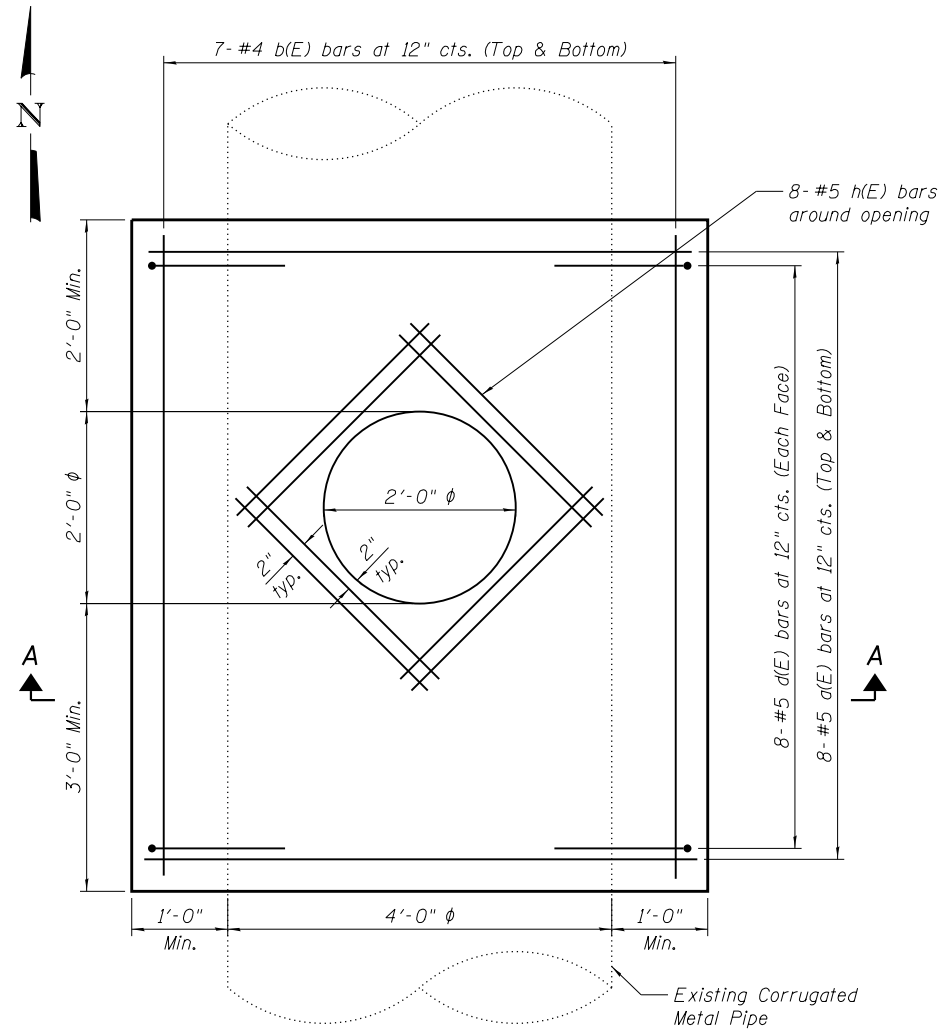
SECTION A-A



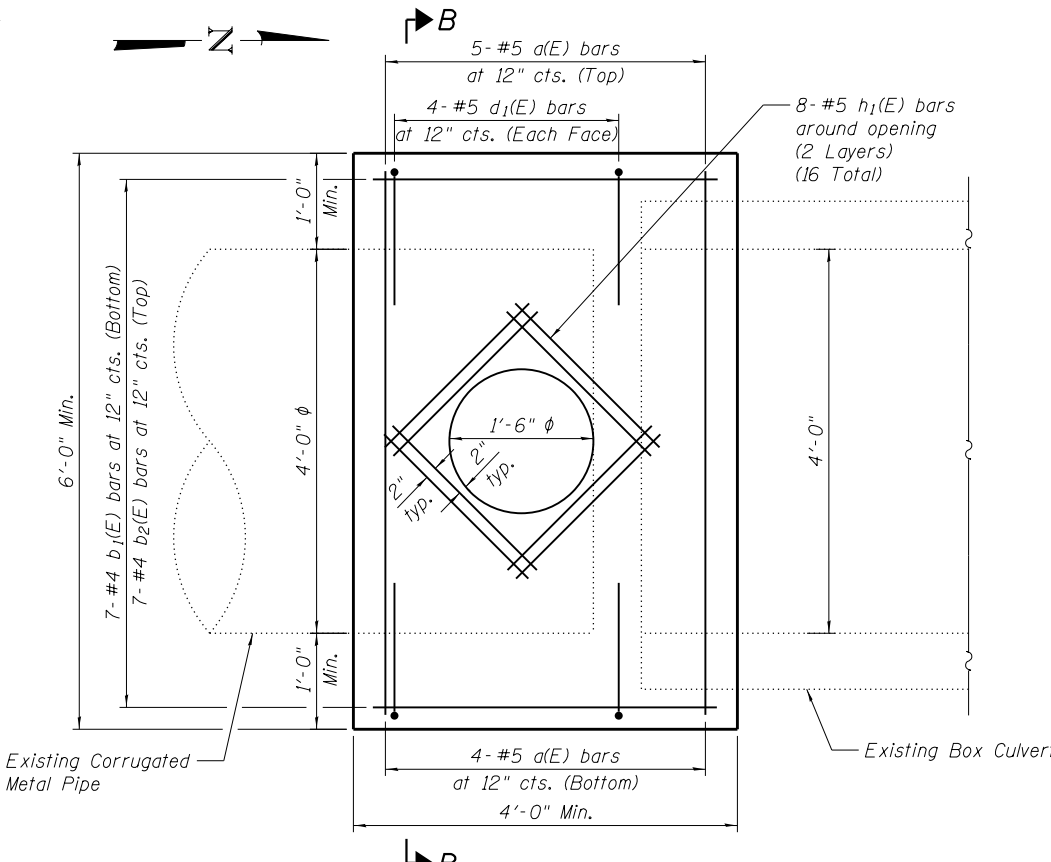
LONGITUDINAL SECTION



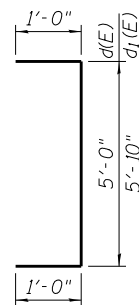
SECTION B-B



PLAN
PARKING LOT INLET



PLAN
INLET AT EDGE OF PAVEMENT



BAR d(E) and d₁(E)

GENERAL NOTES

1. Reinforcement bars designated (E) shall be epoxy coated.
2. Clearance for the reinforcement bars is 2" unless noted otherwise.
3. Cut bars a(E), b(E) and b₁(E) in field to miss the opening for the inlet.
4. The Contractor shall use Sonitube or other means of supporting existing CMP and forming for Concrete Collar.
5. The Contractor shall be careful performing the work around existing CMP and existing box culvert. Any damage to the existing CMP and existing box culvert shall be repaired at the Contractor's expense.
6. Expansion bolts shall be 3/4" diameter hooked bolts extended a minimum of 9" into new concrete.
7. The cost of 3/4" diameter expansion bolts shall be included in the cost of Concrete Structures.
8. Plan dimensions and details relative to existing conditions are subject to nominal construction variations. The Contractor shall field verify existing dimensions and details affecting new construction and make necessary approved adjustments prior to construction or ordering of materials. Such variations shall not be cause for additional compensation for a change in scope of the work, however, the Contractor will be paid for the quantity actually furnished at the unit price bid for the work.

BILL OF MATERIAL

Bar	No.	Size	Length	Shape
a(E)	25	#5	5'-8"	—
b(E)	22	#4	6'-8"	—
b ₁ (E)	17	#4	2'-8"	—
b ₂ (E)	7	#4	3'-8"	—
d(E)	16	#5	7'-0"	┌
d ₁ (E)	8	#5	7'-8"	┌
h(E)	8	#5	3'-0"	—
h ₁ (E)	16	#5	2'-6"	—
Concrete Structures			Cu. Yd.	7.8
Reinforcement Bars, Epoxy Coated			Pound	550

FILE NAME = C:\Projects\0162882-shr-Concrete Collar_Details.dgn



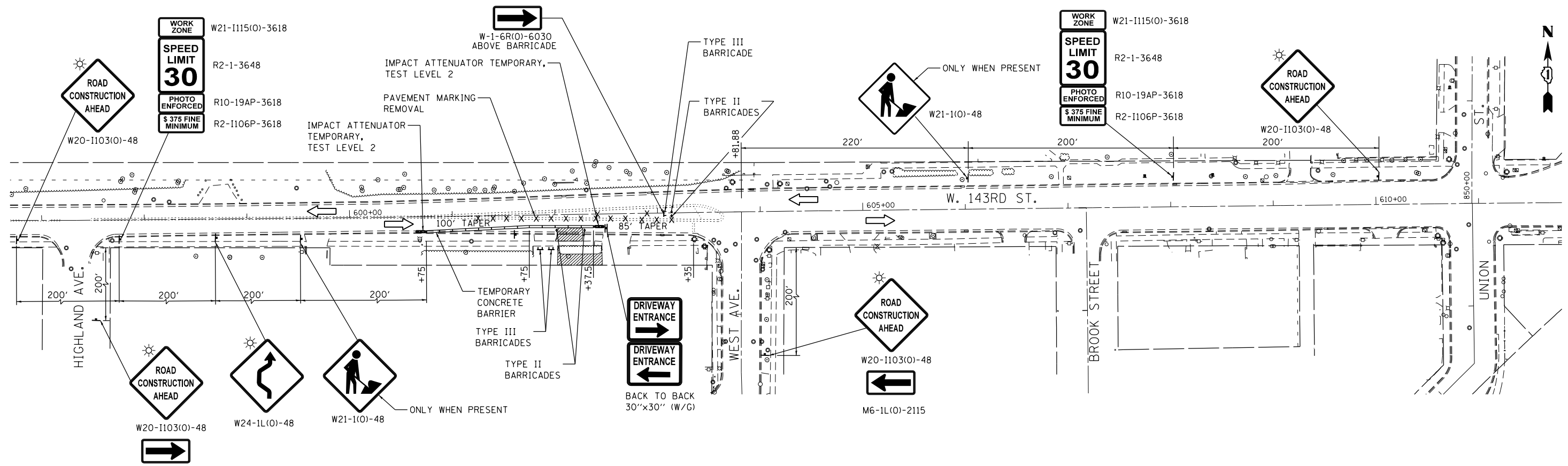
USER NAME = miduja	DESIGNED - SAT	REVISION
PLOT SCALE = 2:8" = 1'	CHECKED - JMT	REVISION
PLOT DATE = 4/1/2016	DRAWN - SAT	REVISION
	CHECKED - JMT	REVISION

STATE OF ILLINOIS
DEPARTMENT OF TRANSPORTATION

CONCRETE COLLAR DETAILS
IL RTE. 7 (143RD STREET)

SHEET NO. 4 OF 4 SHEETS

F.A.U. RTE.	SECTION	COUNTY	TOTAL SHEETS	SHEET NO.
2688	3349-T	COOK	19	9
CONTRACT NO. 62B82				
ILLINOIS FED. AID PROJECT				



NOTES:

M6-1R(O)-2115

1. THE TRAFFIC CONTROL DEPICTED HEREIN IS THE MINIMUM REQUIREMENT. ADDITIONAL TRAFFIC CONTROL DEVICES AS SPECIFIED IN THE HIGHWAY STANDARDS AS SHOWN IN THE INDEX OF SHEETS AND THE SPECIAL PROVISIONS SHALL BE PLACED BY THE CONTRACTOR TO THE SATISFACTION OF THE ENGINEER. ALL TRAFFIC CONTROL DEVICES SHALL BE CONSIDERED INCLUDED IN THE COST OF TRAFFIC CONTROL AND PROTECTION (SPECIAL) UNLESS OTHERWISE INDICATED WITHIN THESE GENERAL NOTES, PLANS OR SPECIAL PROVISIONS.
2. THE CONTRACTOR SHALL FURNISH, INSTALL, MAINTAIN AND REMOVE ALL SIGNS AND SIGN SUPPORTS REQUIRED FOR THE MAINTENANCE OF TRAFFIC.
3. THE CONTRACTOR SHALL BE RESPONSIBLE FOR PROVIDING LABOR, SIGNS AND TRAFFIC CONTROL DEVICES NECESSARY FOR THE MAINTENANCE OF TRAFFIC UNLESS NOTED OTHERWISE IN THE SPECIAL PROVISIONS.
4. THE CONTRACTOR SHALL CONTACT THE DISTRICT ONE TRAFFIC CONTROL SUPERVISOR AT (847) 705-4470 A MINIMUM OF 72 HOURS IN ADVANCE OF BEGINNING THE WORK.
5. WORK ZONE SPEED LIMIT SHALL BE 30 MPH (SAME AS THE POSTED SPEED LIMIT) ON 143RD STREET.
6. ALL EXISTING SIGNS THAT CONFLICT WITH THE TRAFFIC CONTROL PLAN SHALL BE COVERED OR REMOVED IN ACCORDANCE WITH ARTICLE 107.25 OF THE STANDARD SPECIFICATIONS.
7. THE CONTRACTOR SHALL BE REQUIRED TO REMOVE ALL EXISTING PAVEMENT MARKINGS WHICH CONFLICT WITH THE DESIGNATED MAINTENANCE OF TRAFFIC PLAN.
8. TRAFFIC CONDITIONS, ACCIDENTS, AND OTHER UNFORESEEN EMERGENCY CONDITIONS MAY REQUIRE THE ENGINEER TO RESTRICT, MODIFY OR REMOVE LANE CLOSURES OR CHANNELIZATION SHOWN IN THE PLANS. THE CONTRACTOR SHALL PROMPTLY RESPOND AT THE TIME OF NOTIFICATION BY THE ENGINEER FOR THE MAINTENANCE OF TRAFFIC CONTROL DEVICES.
9. ALL ROAD CONSTRUCTION AHEAD SIGNS, AND TYPE III BARRICADES SHALL BE EQUIPPED WITH MONO-DIRECTIONAL TYPE A AMBER FLASHING LIGHTS. ALL TYPE II BARRICADES SHALL BE EQUIPPED WITH BI-DIRECTIONAL FLASHING LIGHTS.
10. THE CONTRACTOR SHALL BE REQUIRED TO MAINTAIN TRAFFIC IN ACCORDANCE WITH THE MAINTENANCE OF TRAFFIC PLANS, SPECIAL PROVISIONS, APPLICABLE STATE STANDARDS, AND AS DIRECTED BY THE ENGINEER. ANY CHANGES TO THE MAINTENANCE OF TRAFFIC SHALL BE SUBMITTED TO THE ENGINEER FOR APPROVAL A MINIMUM OF 48 HOURS PRIOR TO IMPLEMENTING ANY CHANGES.
11. ALL TRAFFIC CONTROL DEVICES SHALL BE REMOVED, COVERED OR TURNED AWAY FROM THE TRAFFIC IMMEDIATELY WHEN THEY ARE NO LONGER NECESSARY. WHEN A SIGN IS COVERED, ITS POST SHALL HAVE A REFLECTIVE 3" X 6" DELINEATOR INSTALLED. THE COST OF THE DELINEATOR IS INCLUDED IN THE COST OF TRAFFIC CONTROL AND PROTECTION STANDARD 701502.
12. ALL TEMPORARY PAVEMENT MARKINGS SHOWING DETERIORATION AFTER SEVEN (7) DAYS OF SERVICE SHALL BE REPLACED BY THE CONTRACTOR AS DIRECTED BY THE ENGINEER. ALL MARKINGS THAT REQUIRE REPLACEMENT PRIOR TO SEVEN (7) DAYS OF SERVICE SHALL BE REPLACED BY THE CONTRACTOR AT HIS EXPENSE.

13. PROVIDE MINIMUM 12 FOOT LANES THRU THE WORK ZONE. USE PAVEMENT MARKING TAPE, TYPE III, 4" TO DELINEATE EACH EDGE OF THE EASTBOUND LANE THRU THE WORK ZONE. USE A 4" DOUBLE YELLOW LINE SPACED 11" CENTER TO CENTER ALONG THE EASTBOUND LEFT EDGE AND A 4" WHITE LINE ALONG THE EASTBOUND RIGHT EDGE.
14. TEMPORARY CONCRETE BARRIERS AND TEMPORARY IMPACT ATTENUATORS SHALL BE PLACED AS SHOWN IN THE PLANS. FURNISHING, INSTALLING AND RELOCATING TEMPORARY CONCRETE BARRIER AND TEMPORARY IMPACT ATTENUATORS SHALL BE IN ACCORDANCE WITH IDOT SPECIAL PROVISIONS, IDOT HIGHWAY STANDARDS, STANDARD SPECIFICATIONS AND AS DIRECTED BY THE ENGINEER. THE COST OF THE BARRIER WALL MARKERS ARE INCLUDED IN THE UNIT COST OF TEMPORARY CONCRETE BARRIER.
15. TEMPORARY CONCRETE BARRIER WALL SHALL BE CONTINUOUSLY PINNED TO THE PAVEMENT IN ACCORDANCE WITH IDOT STANDARD SPECIFICATIONS FOR ROAD AND BRIDGE CONSTRUCTION WHERE A 3.5 FOOT CLEAR ZONE FREE FROM DROP-OFFS, FIXED OBJECTS, OR OTHER OBSTACLES CANNOT BE PROVIDED BEHIND THE WALL. ANY HOLES LEFT IN THE EXISTING PAVEMENT AREAS THAT ARE NOT TO BE RESURFACED SHALL BE FILLED WITH A NON-SHRINK GROUT TO THE SURFACE OF THE EXISTING PAVEMENT. THE FILLING OF ANY HOLES SHALL NOT BE PAID FOR SEPARATELY, BUT SHALL BE CONSIDERED INCLUDED IN THE COST OF TEMPORARY CONCRETE BARRIER.
16. IMMEDIATELY AFTER THE COMPLETION OF CONSTRUCTION, THE CONTRACTOR SHALL RESTORE ALL PERMANENT PAVEMENT MARKINGS, SIGNS, AND OTHER TRAFFIC CONTROL DEVICES THAT WERE COVERED, REMOVED, DAMAGED OR OTHERWISE AFFECTED BY CONSTRUCTION.

LEGEND

- ⊕ TYPE II BARRICADE WITH 1 TYPE A FLASHER
- ⊥ TYPE III BARRICADE WITH 2 TYPE A FLASHERS
- SIGN ON PERMANENT OR PORTABLE SUPPORT
- ▬ TEMPORARY CONCRETE BARRIER
- ▬ IMPACT ATTENUATORS TEMPORARY (NON-REDIRECTIVE, NARROW), TEST LEVEL 2
- X:X:X:PAVEMENT MARKING REMOVAL
- ← DIRECTION OF TRAFFIC
- ▨ WORK ZONE

FILE NAME = Q:\Engineering\LiveProjects\13016 IDOT DURN\30160-W 7 Contract No 62882\Submitted Files\04-08-2016 Revised MOT to IDOT\162882-ent-MOT.dgn



USER NAME = abee	DESIGNED - TGM	REVISED -
PLOT SCALE = 100.0000' / 1"	DRAWN - JN	REVISED -
PLOT DATE = 4/8/2016	CHECKED - JMT	REVISED -
	DATE - 4-08-2016	REVISED -

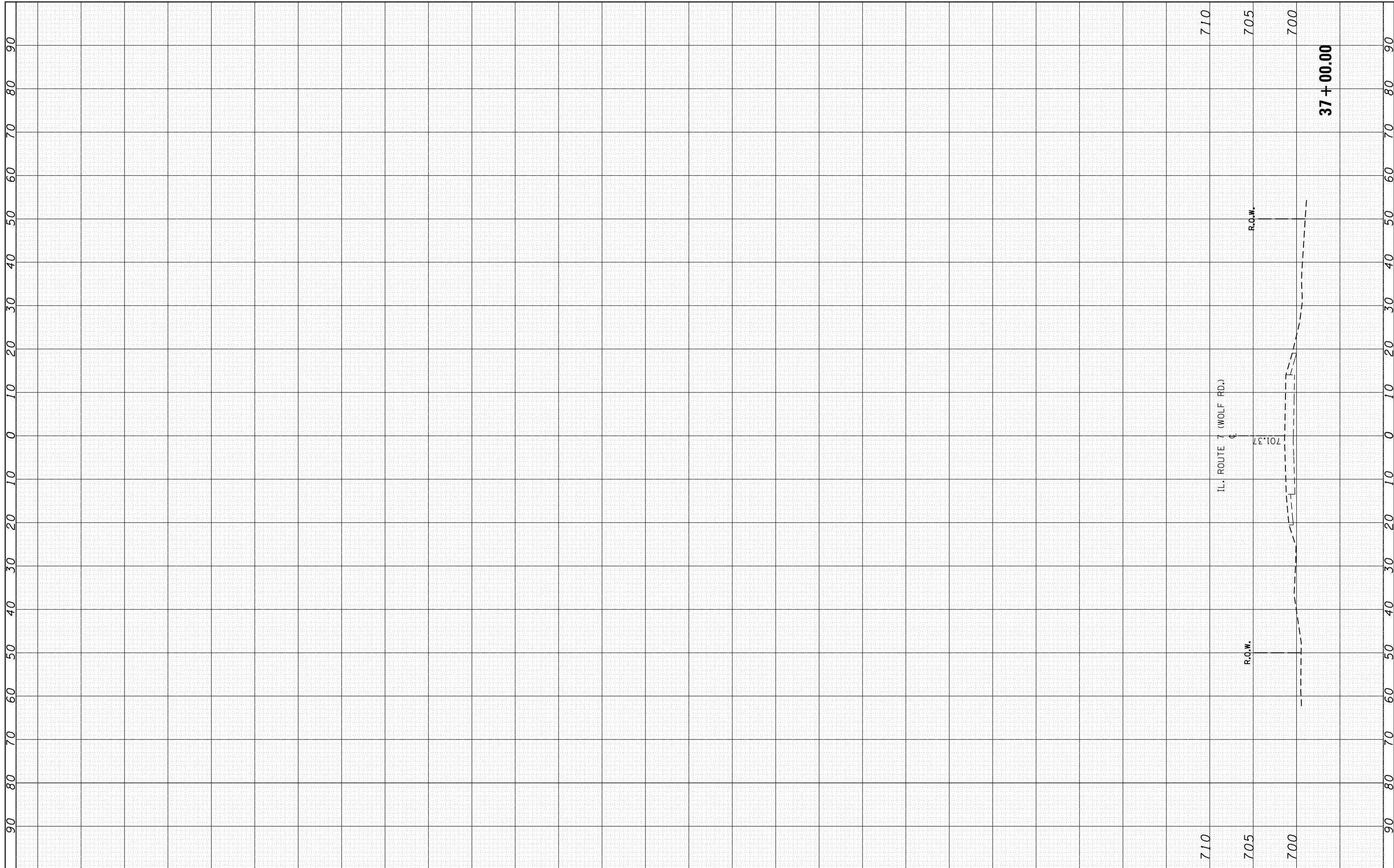
**STATE OF ILLINOIS
DEPARTMENT OF TRANSPORTATION**

MAINTENANCE OF TRAFFIC IL RTE. 7 (143RD ST.)	
SCALE:	SHEET 3 OF 4 SHEETS STA. TO STA.

F.A.U. RTE.	SECTION	COUNTY	TOTAL SHEETS	SHEET NO.
2688	3349-T	COOK		
CONTRACT NO. 62882				
ILLINOIS FED. AID PROJECT				

FINAL SURVEY NO.	SURVEYED PLOTTED AREAS CHECKED	BY	DATE
NOTE BOOK	TEMPLATE		

ORIGINAL SURVEY NO.	SURVEYED PLOTTED AREAS CHECKED	BY	DATE
NOTE BOOK	TEMPLATE		



FILE NAME =	USER NAME = midyja	DESIGNED -	REVISED -
p:\11\084EBIDINTEG\Illinois.gov\PIWIDOT\Documents\IDOT Offices\District 1\Projects\DI15216\CADD\DRAWING\DH5216-shr-xssht-1L7.dgn		DRAWN	REVISED -
Default	PLOT SCALE = 20.0000' / in.	CHECKED -	REVISED -
	PLOT DATE = 3/31/2016	DATE -	REVISED -

**STATE OF ILLINOIS
DEPARTMENT OF TRANSPORTATION**

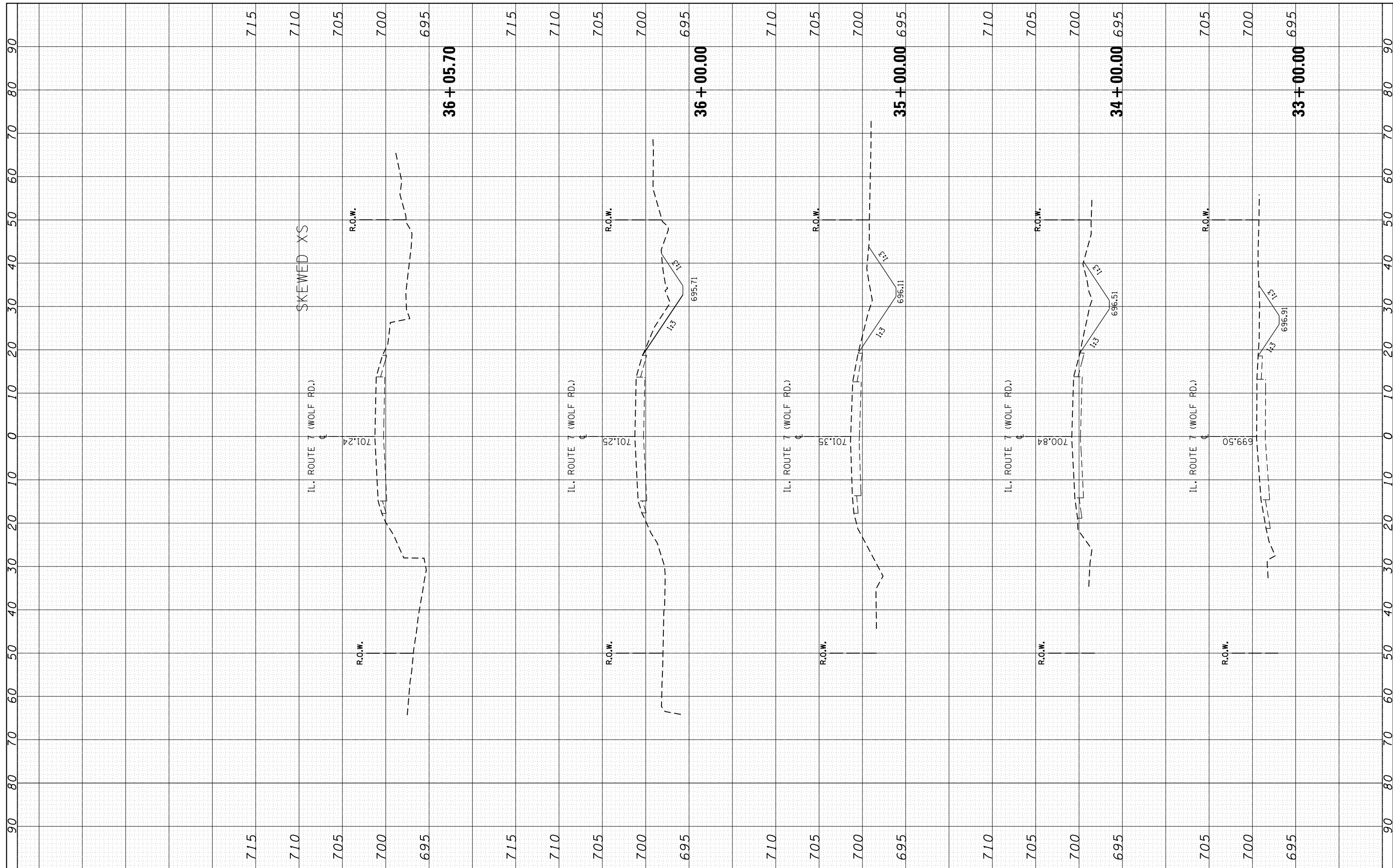
**CROSS SECTIONS
IL RTE 7 (WOLF ST)**

SCALE: SHEET OF SHEETS STA. 37+00.00 TO STA. 37+00.00

F.A.U. RTE.	SECTION	COUNTY	TOTAL SHEETS	SHEET NO.
2688	3349-T	COOK	19	11
CONTRACT NO. 62B82				
ILLINOIS FED. AID PROJECT				

FINAL SURVEY	SURVEYED	BY	DATE
NOTE BOOK	PLOTTED		
NO.	TEMPLATE		
	AREAS CHECKED		

ORIGINAL SURVEY	SURVEYED	BY	DATE
NOTE BOOK	PLOTTED		
NO.	TEMPLATE		
	AREAS CHECKED		



FILE NAME = p:\11\084EBIDINTEG\Illinois.gov\PIWIDOT\Documents\IDOT Offices\District 1\Projects\0115216\CADD\Drawings\DH5216-sht-xsst-IL7.dgn

USER NAME = miduja
 DESIGNED -
 CHECKED -
 DATE - 3/31/2016

REVISOR -
 REVISOR -
 REVISOR -
 REVISOR -

**STATE OF ILLINOIS
 DEPARTMENT OF TRANSPORTATION**

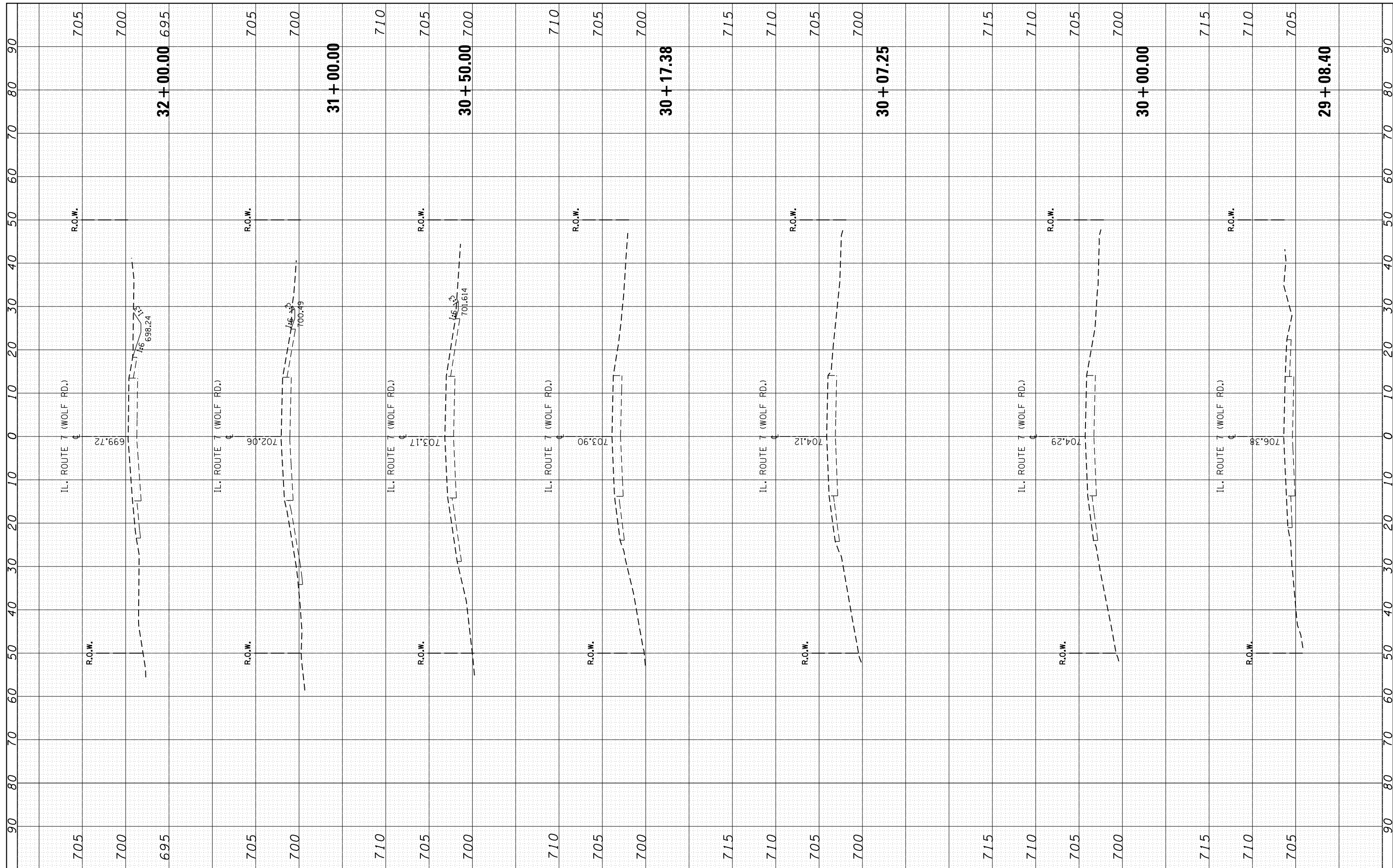
**CROSS SECTIONS
 IL RTE 7 (WOLF ST)**

SCALE: SHEET OF SHEETS STA. 33+00.00 TO STA. 36+05.70

F.A.U. RTE. 2688	SECTION 3349-T	COUNTY COOK	TOTAL SHEETS 19	SHEET NO. 12
CONTRACT NO. 62B82				
ILLINOIS FED. AID PROJECT				

FINAL SURVEY NO.	SURVEYED PLOTTED AREAS CHECKED	BY	DATE

ORIGINAL SURVEY NO.	SURVEYED PLOTTED AREAS CHECKED	BY	DATE



FILE NAME = p:\11\084EBIDINTEG\Illinois.gov\PIDOT\Documents\DOT Offices\District 1\Projects\D115216\CADD\DRAWING\DH5216-sht-xssht-1L7.dgn
 USER NAME = miduja
 PLOT SCALE = 20.0000' / in.
 PLOT DATE = 3/31/2016

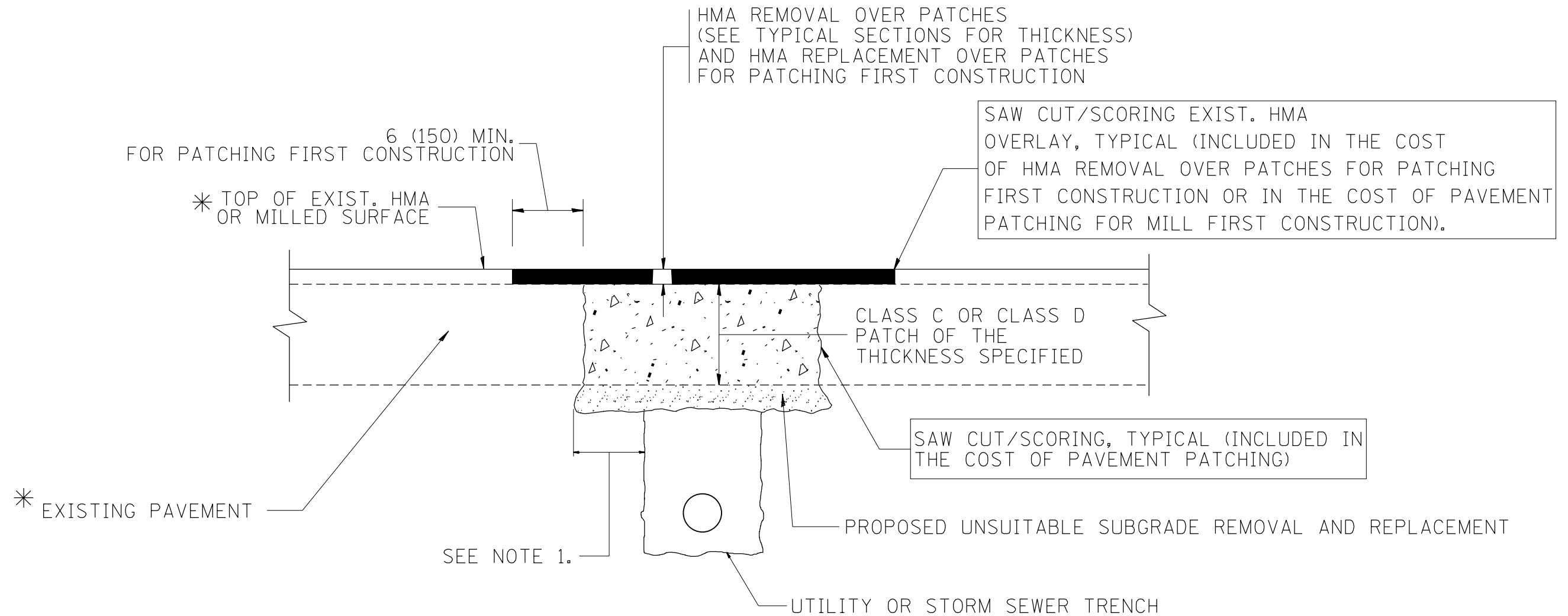
DESIGNED -	REVISIED -
CHECKED -	REVISIED -
DATE -	REVISIED -

**STATE OF ILLINOIS
DEPARTMENT OF TRANSPORTATION**

CROSS SECTIONS

SCALE: SHEET OF SHEETS STA. 29+08.40 TO STA. 32+00.00

F.A.U. RTE.	SECTION	COUNTY	TOTAL SHEETS	SHEET NO.
2688	3349-T	COOK	19	13
CONTRACT NO. 62B82				
ILLINOIS FED. AID PROJECT				



* SEE TYPICAL SECTIONS FOR THICKNESS AND MATERIALS

NOTES:

1. THE WIDTH OF THE FULL DEPTH PATCH OVER A TRENCH SHALL BE 12 (300) WIDER ON EACH SIDE OF THE TRENCH.
2. FOR METHOD OF MEASUREMENT AND BASIS OF PAYMENT, SEE RECURRING SPECIAL PROVISION "PATCHING WITH HOT-MIX ASPHALT OVERLAY REMOVAL".

SEQUENCE OF CONSTRUCTION (PATCHING FIRST)

1. REMOVE THE EXISTING HMA MATERIAL OVER THE AREA TO BE PATCHED.
2. REMOVE AND REPLACE WITH CLASS C OR D PATCH.
3. REPLACE HMA MATERIAL OVER THE AREA TO BE PATCHED.

SEQUENCE OF CONSTRUCTION (MILLING FIRST)

1. MILL HMA FIRST IF THERE IS AT LEAST 4 1/2 INCHES OR MORE OF HMA MATERIAL ON TOP OF THE EXISTING PAVEMENT OR IF THE PAVEMENT IS FULL DEPTH HMA. A MINIMUM OF 2 INCHES OF HMA MATERIAL SHALL BE IN PLACE AFTER MILLING.
2. REMOVE AND REPLACE WITH FULL DEPTH CLASS D PATCHES TO TOP OF MILLED SURFACE.

• 2688
1600
ALL DIMENSIONS ARE IN INCHES (MILLIMETERS) UNLESS OTHERWISE SHOWN.

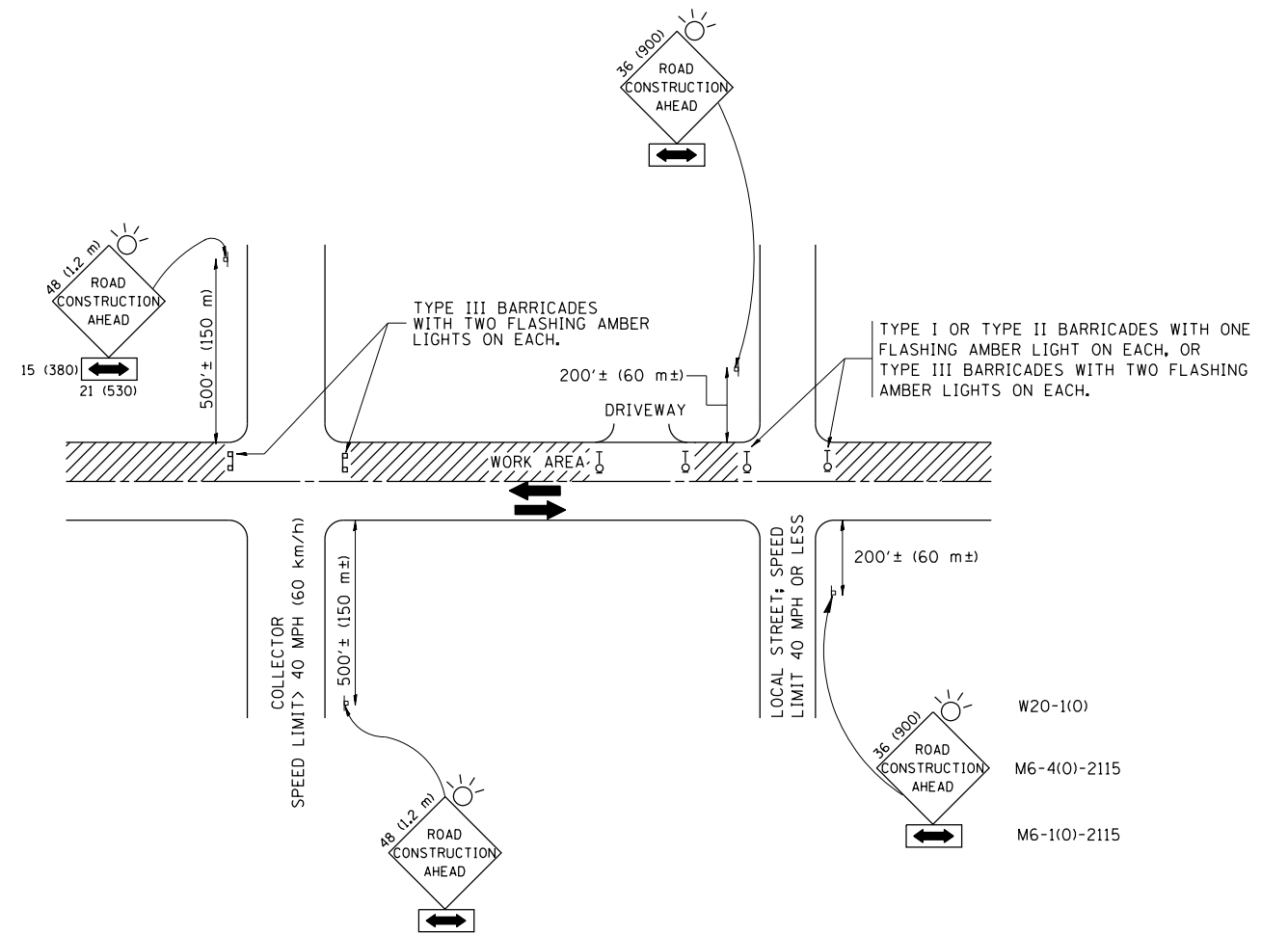
FILE NAME =	USER NAME = midyja	DESIGNED - R. SHAH	REVISED - A. ABBAS 04-27-98
pw:\IL\084EBIDINTEG.illinois.gov\PIWIDOT\Documents\DOT Offices\District 1\Projects\DI1521\Drawings\Design\DistStd.dgn		CHECKED -	REVISED - R. BORO 01-01-07
	PLOT SCALE = 100.0000' / 1in.	DATE - 10-25-94	REVISED - R. BORO 09-04-07
	PLOT DATE = 3/31/2016		REVISED - K. ENG 10-27-08

**STATE OF ILLINOIS
DEPARTMENT OF TRANSPORTATION**

**PAVEMENT PATCHING FOR
HMA SURFACED PAVEMENT**

SCALE: NONE SHEET NO. 1 OF 1 SHEETS STA. TO STA.

F.A.U. RTE.	SECTION	COUNTY	TOTAL SHEETS	SHEET NO.
•	3349-T	COOK	19	14
BD400-04 (BD-22)			CONTRACT NO. 62B82	
FED. ROAD DIST. NO. 1 ILLINOIS FED. AID PROJECT				



TRAFFIC CONTROL AND PROTECTION FOR SIDE ROADS, INTERSECTIONS, AND DRIVEWAYS

NOTES:

- A. FOR NO LANE RESTRICTION ON THE SIDE ROAD OR DRIVEWAYS
 1. SIDE ROAD WITH A SPEED LIMIT OF 40 MPH (60 km/h) OR LESS AS SHOWN ON THE DRAWING AND AS DIRECTED BY THE ENGINEER:
 - a) ONE ROAD CONSTRUCTION AHEAD SIGN 36 x 36 (900x900) WITH A FLASHER AND FLAG MOUNTED ON IT APPROXIMATELY 200' (60 m) IN ADVANCE OF THE MAIN ROUTE.
 - b) THE CLOSED PORTION OF THE MAIN ROUTE SHALL BE PROTECTED BY BLOCKING WITH TYPE I, TYPE II OR TYPE III BARRICADES, 1/3 OF THE CROSS SECTION OF THE CLOSED PORTION.
 2. SIDE ROAD WITH A SPEED LIMIT GREATER THAN 40 MPH (60 km/h) AS SHOWN ON THE DRAWING AND AS DIRECTED BY THE ENGINEER:
 - a) ONE ROAD CONSTRUCTION AHEAD SIGN 48 x 48 (1.2 m x 1.2 m) WITH A FLASHER MOUNTED ON IT APPROXIMATELY 500' (150 m) IN ADVANCE OF THE MAIN ROUTE.
 - b) THE CLOSED PORTION OF THE MAIN ROUTE SHALL BE PROTECTED BY BLOCKING WITH TYPE III BARRICADES, 1/2 OF THE CROSS SECTION OF THE CLOSED PORTION.
 3. WHEN THE SIDE ROAD LIES BETWEEN THE BEGINNING OF THE MAINLINE SIGNING AND THE WORK ZONE, A SINGLE HEADED ARROW (M6-1) SHALL BE USED IN LIEU OF THE DOUBLE HEADED ARROW (M6-4).
- B. FOR A LANE CLOSURE ON A SIDE ROAD OR DRIVEWAY:

USE APPLICABLE PORTIONS OF THE TYPICAL APPLICATION OF TRAFFIC CONTROL DEVICES (STD. 701501, STD. 701606 OR THE APPROPRIATE STANDARD). THE SPACING OF SIGNS AND BARRICADES SHALL BE ADJUSTED FOR FIELD CONDITIONS AS DIRECTED BY THE ENGINEER. THE DIRECTIONAL ARROW SHALL BE COVERED OR REMOVED WHEN NO LONGER CONSISTENT WITH THE SIDE ROAD LANE CLOSURE.

 - C. ADVANCE WARNING SIGNS ARE TO BE OMITTED ON DRIVEWAY UNLESS OTHERWISE NOTED.
 - D. THE TRAFFIC CONTROL AND PROTECTION FOR SIDE ROADS, INTERSECTIONS, AND DRIVEWAYS SHALL BE INCIDENTAL TO THE COST OF SPECIFIED TRAFFIC CONTROL STANDARDS OR ITEMS.

• 2688 All dimensions are in millimeters (inches)
1600 unless otherwise shown.

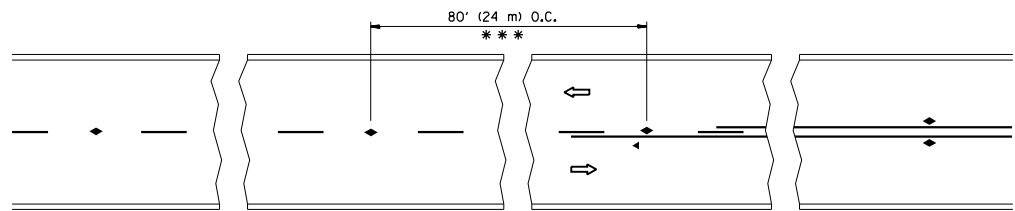
FILE NAME =	USER NAME = midyja	DESIGNED - LHA	REVISED - J. OBERLE 10-18-95
p:\11\084EBIDINTEG\illinois.gov\PIWIDOT\Documents\IDOT Offices\District 1\Projects\DI1521\Drawings\Design\DistStd.dgn			REVISED - A. HOUSEH 03-06-96
	PLOT SCALE = 100.0000' / in.	CHECKED -	REVISED - A. HOUSEH 10-15-96
	PLOT DATE = 3/31/2016	DATE - 06-89	REVISED - T. RAMMACHER 01-06-00

STATE OF ILLINOIS
DEPARTMENT OF TRANSPORTATION

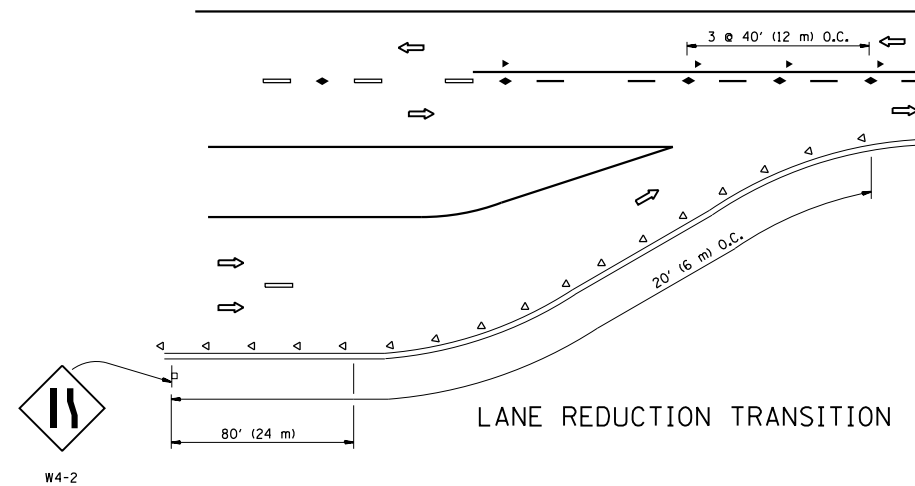
TRAFFIC CONTROL AND PROTECTION FOR
SIDE ROADS, INTERSECTIONS, AND DRIVEWAYS

SCALE: NONE SHEET NO. 1 OF 1 SHEETS STA. TO STA.

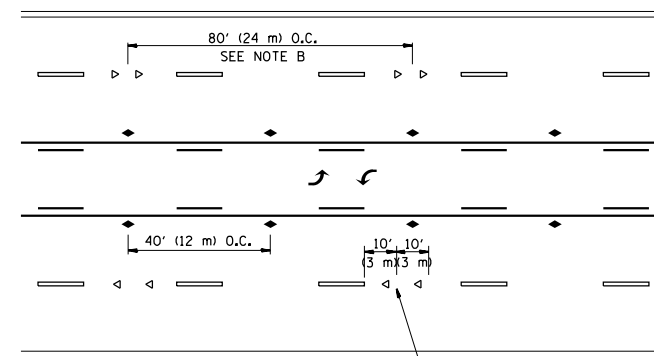
F.A.U. RTE.	SECTION	COUNTY	TOTAL SHEETS	SHEET NO.
*	3349-T	COOK	19	15
TC-10			CONTRACT NO. 62B82	
FED. ROAD DIST. NO. 1 ILLINOIS FED. AID PROJECT				



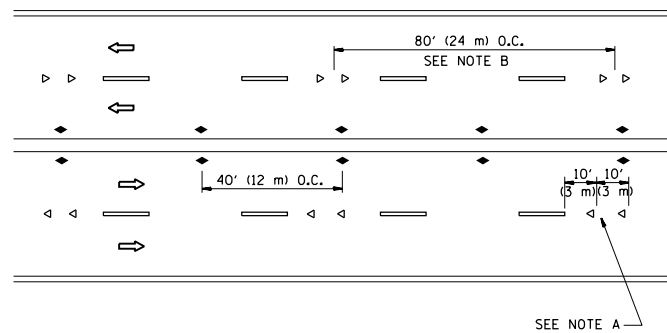
TWO-LANE/TWO-WAY



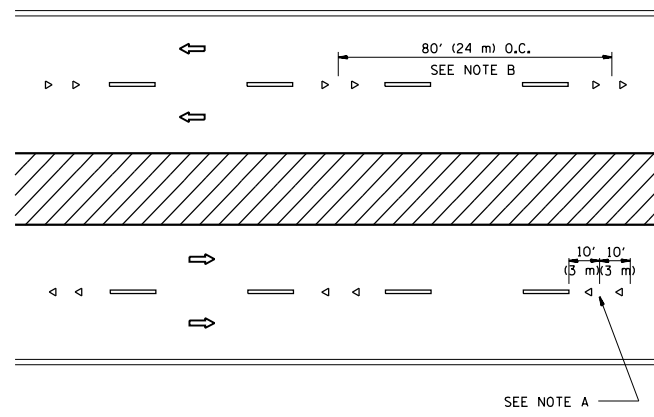
LANE REDUCTION TRANSITION



TWO-WAY LEFT TURN



MULTI-LANE/UNDIVIDED



MULTI-LANE/DIVIDED

GENERAL NOTES

1. MARKERS USED WITH DASHED LINES SHALL BE CENTERED IN THE GAP BETWEEN SEGMENTS.
2. MARKERS USED ADJACENT TO SOLID LINES SHALL BE OFFSET 2 TO 3 (50 TO 75) TOWARD TRAFFIC AS SHOWN.
3. MARKERS THROUGH TANGENTS LESS THAN 500' (150 m) IN LENGTH BETWEEN CURVES SHALL BE INSTALLED AT THE LESSER OF THE TWO CURVE SPACINGS.

SYMBOLS

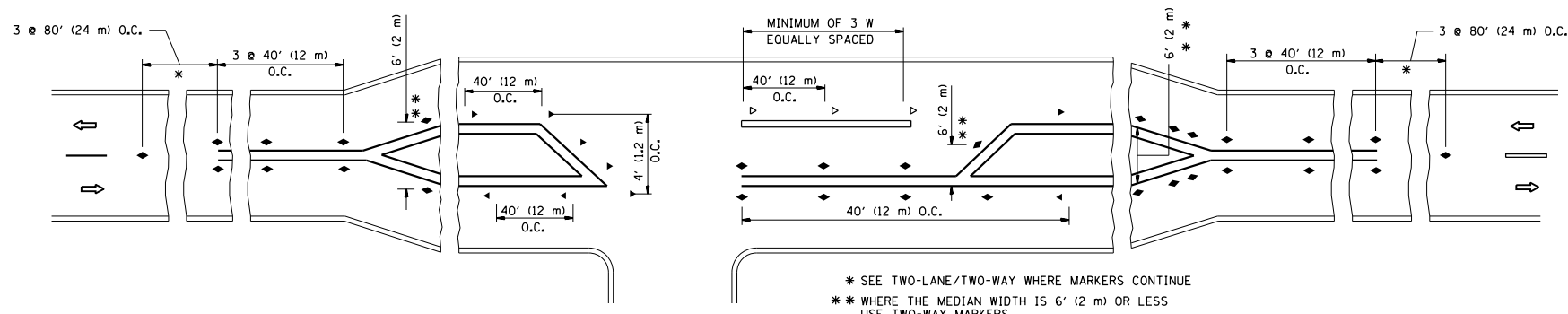
- YELLOW STRIPE
- WHITE STRIPE
- ◀ ONE-WAY AMBER MARKER
- ◁ ONE-WAY CRYSTAL MARKER (W/O)
- ◆ TWO-WAY AMBER MARKER

LANE MARKER NOTES

- A. USE DOUBLE LANE LINE MARKERS SPACED AS SHOWN.
- B. REDUCE TO 40' (12 m) O.C. ON CURVES WHERE ADVISORY SPEEDS ARE 10 M.P.H (20 km/h) LOWER THAN POSTED SPEEDS.

DESIGN NOTES

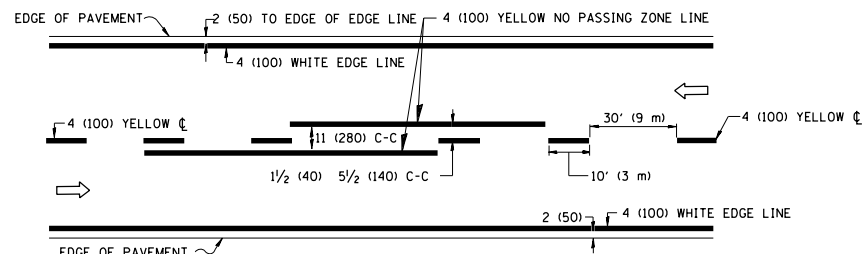
1. DOUBLE LANE LINE MARKERS SHALL BE USED UNLESS SPECIFIED OTHERWISE.
2. EXCEPT AS SHOWN ON THE LANE REDUCTION TRANSITION AND FREEWAY EXIT RAMP DETAIL, MARKERS ARE NOT TO BE SPECIFIED ON RIGHT EDGE LINES.
3. THE EXACT MARKER LIMITS, SPACING, AND COLOR SHALL BE INCLUDED IN THE PLANS WHEN STANDARD SPECIFICATIONS ARE NOT BEING USED.
4. MARKERS SHOULD NOT BE USED ALONGSIDE CURBS EXCEPT FOR EXTREMELY SHORT SECTIONS OF CURBS WHERE NOT MORE THAN TWO MARKERS WOULD BE INVOLVED.



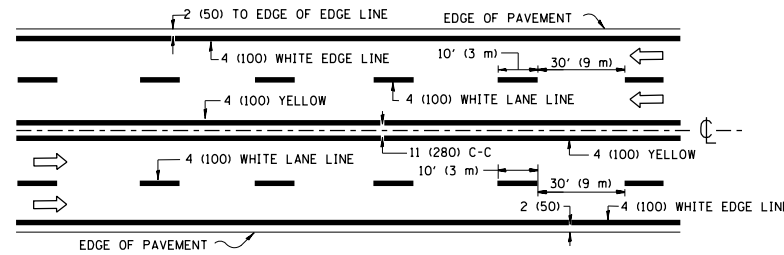
LEFT TURN

All dimensions are in inches (millimeters) unless otherwise shown.

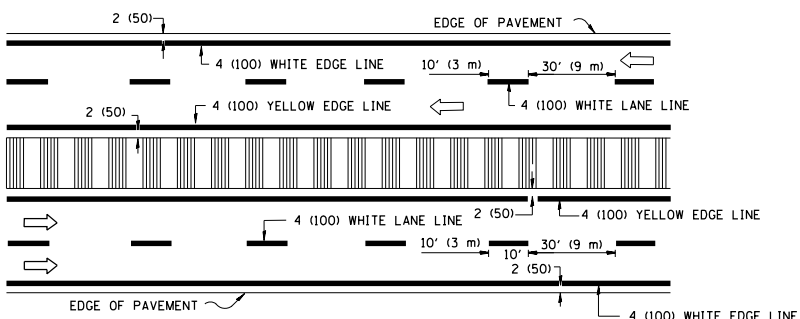
FILE NAME =	USER NAME = midyja	DESIGNED -	REVISED - T. RAMMACHER 09-19-94	STATE OF ILLINOIS DEPARTMENT OF TRANSPORTATION	TYPICAL APPLICATIONS			F.A.U. RTE.	SECTION	COUNTY	TOTAL SHEETS	SHEET NO.	
pw\1\084EBIDINTEG.illinois.gov\PIWIDOT\Documents\IDOT Offices\District 1\Projects\DI1521\Drawings\Design\DistStd.dgn		CHECKED -	REVISED - T. RAMMACHER 03-12-99		RAISED REFLECTIVE PAVEMENT MARKERS (SNOW-PLOW RESISTANT)			•	3349-T	COOK	19	16	
PLOT SCALE = 100.0000' / 1in.		DATE -	REVISED - T. RAMMACHER 01-06-00		SCALE: NONE	SHEET NO. 1	OF 1 SHEETS	STA.	TO STA.	TC-11			CONTRACT NO. 62B82
PLOT DATE = 3/31/2016			REVISED - C. JUCIUS 09-09-09					FED. ROAD DIST. NO. 1 ILLINOIS FED. AID PROJECT					



2-LANE ROADWAY

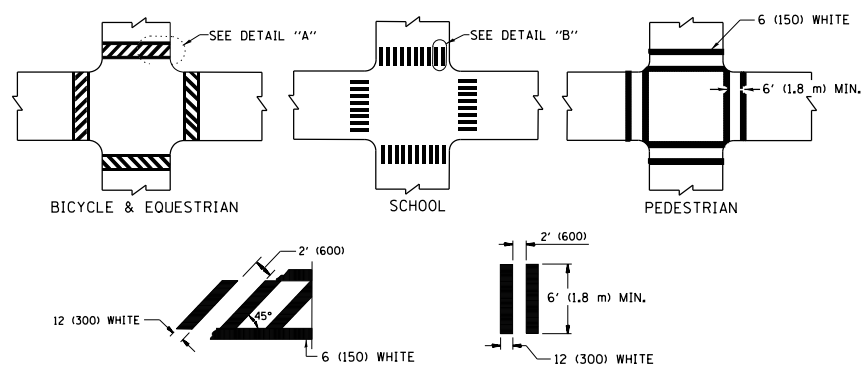


MULTI-LANE UNDIVIDED



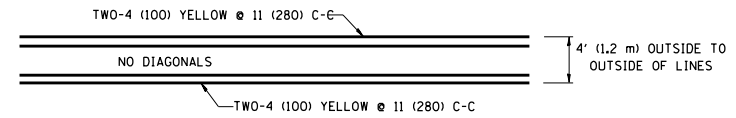
MULTI-LANE DIVIDED WITH MEDIAN

TYPICAL LANE AND EDGE LINE MARKING

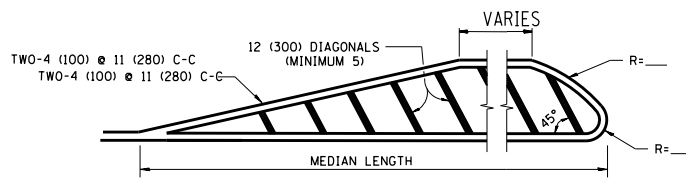


TYPICAL CROSSWALK MARKING

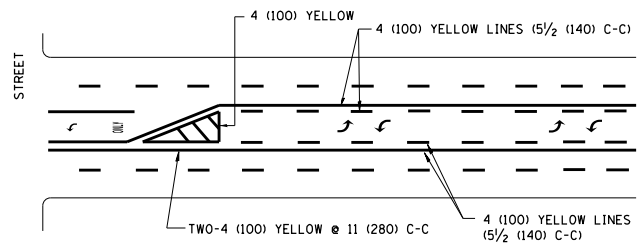
* MARKINGS SHALL BE INSTALLED PARALLEL TO THE CENTERLINE OF THE ROAD WHICH IT CROSSES



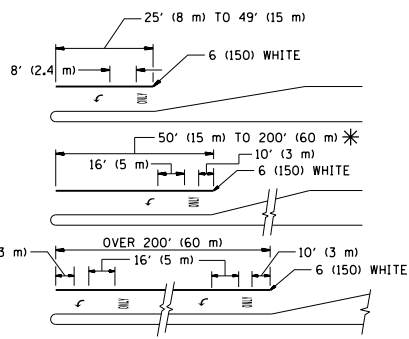
4' (1.2 m) WIDE MEDIANS ONLY



MEDIANS OVER 4' (1.2 m) WIDE



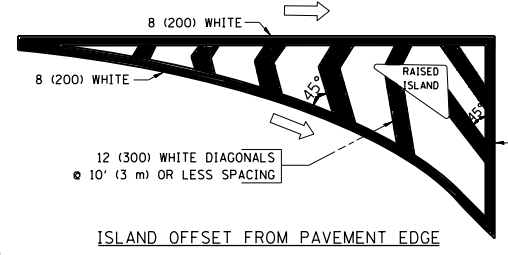
MEDIAN WITH TWO-WAY LEFT TURN LANE TYPICAL PAINTED MEDIAN MARKING



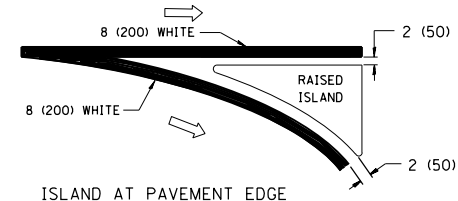
TYPICAL LEFT (OR RIGHT) TURN LANE TYPICAL TURN LANE MARKING

FULL SIZE LETTERS 8' (2.4 m) AND ARROWS SHALL BE USED. AREA = 15.6 SQ. FT. (1.5 m²) ONLY AREA = 20.8 SQ. FT. (1.9 m²)

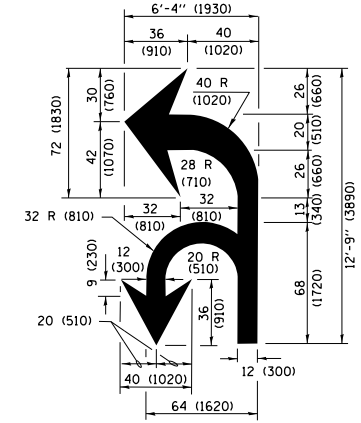
* TURN LANES IN EXCESS OF 400' (120 m) IN LENGTH MAY HAVE AN ADDITIONAL SET OF ARROW - "ONLY" INSTALLED MIDWAY BETWEEN THE OTHER TWO SETS OF ARROW - "ONLY".



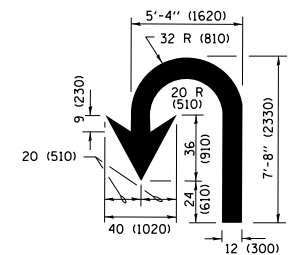
ISLAND OFFSET FROM PAVEMENT EDGE



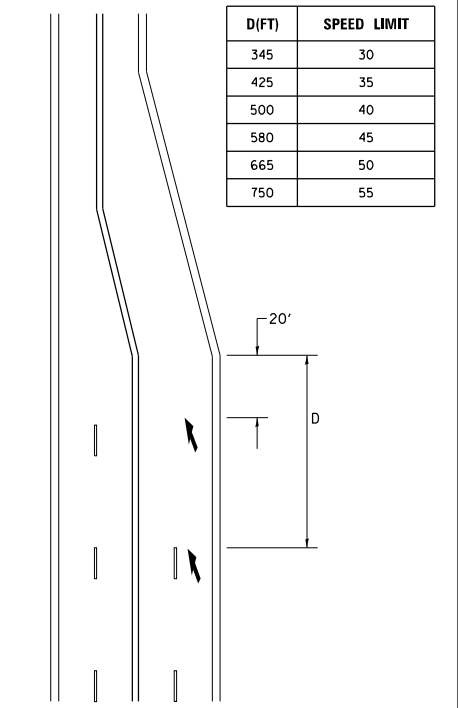
ISLAND AT PAVEMENT EDGE TYPICAL ISLAND MARKING



COMBINATION LEFT AND U-TURN



U-TURN



LANE REDUCTION TRANSITION

* LANE REDUCTION ARROWS REQUIRED AT SPEEDS OF 45 MPH OR GREATER OR WHEN SPECIFIED IN PLANS.

TYPE OF MARKING	WIDTH OF LINE	PATTERN	COLOR	SPACING /REMARKS
CENTERLINE ON 2 LANE PAVEMENT	4 (100)	SKIP-DASH	YELLOW	10' (3 m) LINE WITH 30' (9 m) SPACE
CENTERLINE ON MULTI-LANE UNDIVIDED PAVEMENT	2 @ 4 (100)	SOLID	YELLOW	11 (280) C-C
NO PASSING ZONE LINES FOR ONE DIRECTION FOR BOTH DIRECTIONS	4 (100) 2 @ 4 (100)	SOLID SOLID	YELLOW YELLOW	5 1/2 (140) C-C FROM SKIP-DASH CENTERLINE 11 (280) C-C OMIT SKIP-DASH CENTERLINE BETWEEN
LANE LINES	4 (100) 5 (125) ON FREEWAYS	SKIP-DASH SKIP-DASH	WHITE WHITE	10' (3 m) LINE WITH 30' (9 m) SPACE
DOTTED LINES (EXTENSIONS OF CENTER, LANE OR TURN LANE MARKINGS)	SAME AS LINE BEING EXTENDED	SKIP-DASH	SAME AS LINE BEING EXTENDED	2' (600) LINE WITH 6' (1.8 m) SPACE
EDGE LINES	4 (100)	SOLID	YELLOW-LEFT WHITE-RIGHT	OUTLINE MEDIANS IN YELLOW
TURN LANE MARKINGS	6 (150) LINE; FULL SIZE LETTERS & SYMBOLS (8' (2.4m))	SOLID	WHITE	SEE TYPICAL TURN LANE MARKING DETAIL
TWO WAY LEFT TURN MARKING	2 @ 4 (100) EACH DIRECTION 8' (2.4m) LEFT ARROW	SKIP-DASH AND SOLID IN PAIRS	YELLOW WHITE	10' (3 m) LINE WITH 30' (9 m) SPACE FOR SKIP-DASH; 5 1/2 (140) C-C BETWEEN SOLID LINE AND SKIP-DASH LINE SEE TYPICAL TWO-WAY LEFT TURN MARKING DETAIL
CROSSWALK LINES (PEDESTRIAN) A. DIAGONALS (BIKE & EQUESTRIAN) B. LONGITUDINAL BARS (SCHOOL)	2 @ 6 (150) 12 (300) @ 45° 12 (300) @ 90°	SOLID SOLID SOLID	WHITE WHITE WHITE	NOT LESS THAN 6' (1.8 m) APART 2' (600) APART 2' (600) APART SEE TYPICAL CROSSWALK MARKING DETAILS.
STOP LINES	24 (600)	SOLID	WHITE	PLACE 4' (1.2 m) IN ADVANCE OF AND PARALLEL TO CROSSWALK, IF PRESENT, OTHERWISE, PLACE AT DESIRED STOPPING POINT, PARALLEL TO CROSSROAD CENTERLINE, WHERE POSSIBLE
PAINTED MEDIANS	2 @ 4 (100) WITH 12 (300) DIAGONALS @ 45° NO DIAGONALS USED FOR 4' (1.2 m) WIDE MEDIANS	SOLID	YELLOW; TWO WAY TRAFFIC WHITE; ONE WAY TRAFFIC	11 (280) C-C FOR THE DOUBLE LINE SEE TYPICAL PAINTED MEDIAN MARKING.
GORE MARKING AND CHANNELIZING LINES	8 (200) WITH 12 (300) DIAGONALS @ 45°	SOLID	WHITE	DIAGONALS: 15' (4.5 m) C-C (LESS THAN 30MPH (50 km/h)) 20' (6 m) C-C 30MPH (50 km/h) TO 45MPH (70 km/h) 30' (9 m) C-C (OVER 45MPH (70 km/h))
RAILROAD CROSSING	24 (600) TRANSVERSE LINES; "RR" IS 6' (1.8 m) LETTERS; 16 (400) LINE FOR "X"	SOLID	WHITE	SEE STATE STANDARD 780001 AREA OF: "R"=3.6 SQ. FT. (0.33 m ²) EACH "X"=54.0 SQ. FT. (5.0 m ²)
SHOULDER DIAGONALS (REQUIRED FOR SHOULDERS ≥ 8')	12 (300) @ 45°	SOLID	WHITE - RIGHT YELLOW - LEFT	50' (15 m) C-C (LESS THAN 30MPH (50 km/h)) 75' (22.5 m) C-C (30 MPH (50 km/h) TO 45MPH (70 km/h)) 150' (45 m) C-C (OVER 45MPH (70 km/h))
U TURN ARROW	SEE DETAIL	SOLID	WHITE	16.3 SF
2 ARROW COMBINATION LEFT AND U TURN	SEE DETAIL	SOLID	WHITE	30.4 SF

FOR FURTHER DETAILS ON PAVEMENT MARKING REFER TO STANDARD SPECIFICATIONS FOR ROAD AND BRIDGE CONSTRUCTION AND STATE STANDARD 780001.

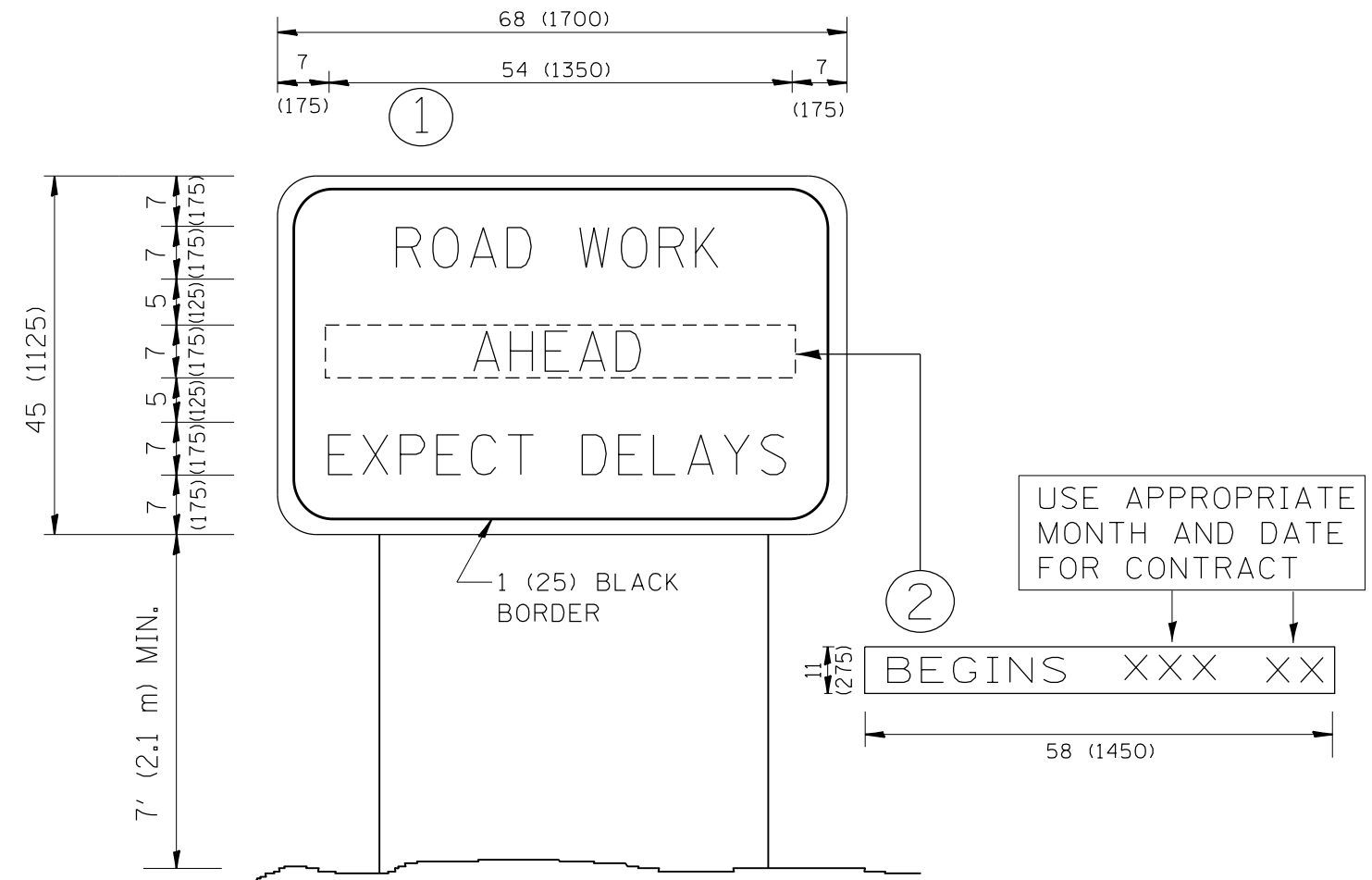
All dimensions are in inches (millimeters) unless otherwise shown.

FILE NAME =	USER NAME = midyja	DESIGNED - EVERS	REVISED - T. RAMMACHER 10-27-94
pw\1\084EBIDINTEG.illinois.gov\PIWIDOT\Documents\DOT Offices\District 1\Projects\DI1521\Drawings\Design\DistStd.dgn		CHECKED -	REVISED - C. JUCIUS 09-09-09
Default	PLOT SCALE = 100.0000' / in.	DATE - 03-19-90	REVISED - C. JUCIUS 07-01-13
	PLOT DATE = 3/31/2016		REVISED - C. JUCIUS 12-21-15

STATE OF ILLINOIS DEPARTMENT OF TRANSPORTATION

DISTRICT ONE TYPICAL PAVEMENT MARKINGS			
SCALE: NONE	SHEET 1 OF 1 SHEETS	STA. TO STA.	

F.A.J. RTE.	SECTION	COUNTY	TOTAL SHEETS	SHEET NO.
*	3349-T	COOK	19	17
TC-13		CONTRACT NO. 62B82		
ILLINOIS FED. AID PROJECT				



NOTES:

1. USE BLACK LETTERING ON ORANGE BACKGROUND.
2. ERECT SIGNS IN ADVANCE OF THE LOCATION FOR THE "ROAD CONSTRUCTION AHEAD" SIGN AT LOCATIONS AS DIRECTED BY THE ENGINEER.
3. ERECT SIGN ① WITH INSTALLED PANEL ② ONE WEEK PRIOR TO THE START OF CONSTRUCTION.
4. REMOVE PANEL ② SOON AFTER THE START OF CONSTRUCTION.
5. SEE SPECIAL PROVISION FOR "TEMPORARY INFORMATION SIGNING" FOR ADDITIONAL INFORMATION.
6. ONE SIGN ASSEMBLY EQUALS 25.70 SQ. FT. (2.3 SQ. M.)
7. SHALL BE PAID FOR AS TEMPORARY INFORMATION SIGNING.

ALL DIMENSIONS ARE IN INCHES (MILLIMETERS) UNLESS OTHERWISE SHOWN.

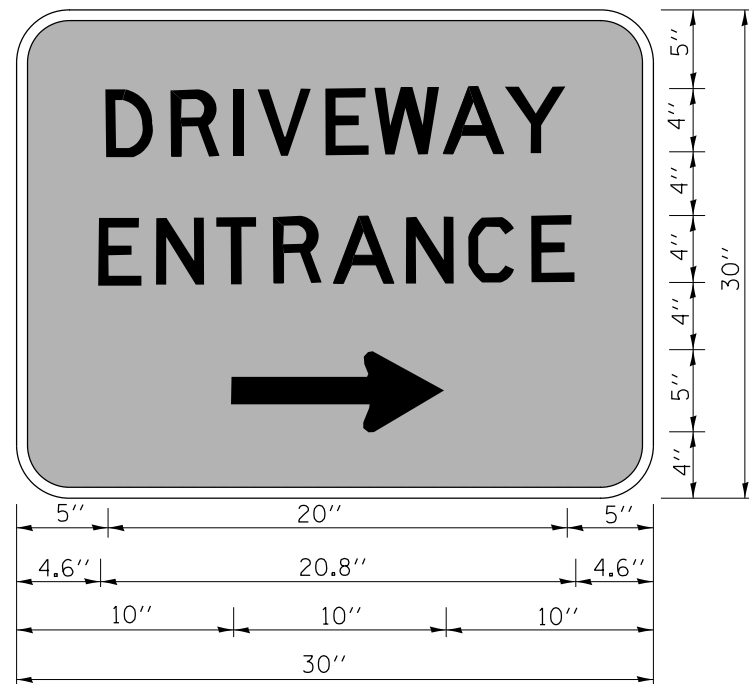
FILE NAME =	USER NAME = midyja	DESIGNED -	REVISED - R. MIRS 09-15-97
p:\11\084EBIDINTEG.illinois.gov\PIWIDOT\Documents\DOT Offices\District 1\Projects\DI1521\Drawings\Design\DistStd.dgn		CHECKED -	REVISED - R. MIRS 12-11-97
	PLOT SCALE = 100.0000' / 1in.	DATE -	REVISED - T. RAMMACHER 02-02-99
	PLOT DATE = 3/31/2016		REVISED - C. JUCIUS 01-31-07

**STATE OF ILLINOIS
DEPARTMENT OF TRANSPORTATION**

**ARTERIAL ROAD
INFORMATION SIGN**

SCALE: NONE SHEET NO. 1 OF 1 SHEETS STA. TO STA.

F.A.U. RTE.	SECTION	COUNTY	TOTAL SHEETS	SHEET NO.
•	3449-T	COOK	19	18
TC-22			CONTRACT NO. 62B82	
FED. ROAD DIST. NO. 1 ILLINOIS FED. AID PROJECT				



3.0" RADIUS, 0.5" BORDER, WHITE ON GREEN; REFLECTORIZED
 "DRIVEWAY" D; "ENTRANCE" D; STANDARD ARROW CUSTOM 12.0" x 5.0"

NOTES:

1. HALF OF THE SIGNS WILL REQUIRE A LEFT HAND FACING ARROW.
2. TWO SIGNS SHALL BE USED AT EACH COMMERCIAL ENTRANCE
 PLACED BACK-TO-BACK; ONE WITH A RIGHT HAND ARROW (SHOWN)
 SHALL BE PLACED ON THE NEAR RIGHT SIDE THE DRIVEWAY
 AND ONE WITH A LEFT HAND ARROW SHALL BE PLACED ON THE
 FAR LEFT SIDE OF THE DRIVEWAY.
3. SIGNS TO BE PAID FOR AS ITEM "TEMPORARY INFORMATION SIGNING".

• 2688
1600

FILE NAME =	USER NAME = midyja	DESIGNED -	REVISED - C. JUCIUS 02-15-07
p:\11\084EBIDINTEG\illinois.gov\PWIDOT\Documents\DOT Offices\District 1\Projects\DI1521\Drawings\Design\DistStd.dgn		DRAWN -	REVISED -
	PLOT SCALE = 100.0000' / 1in.	CHECKED -	REVISED -
	PLOT DATE = 3/31/2016	DATE -	REVISED -

**STATE OF ILLINOIS
 DEPARTMENT OF TRANSPORTATION**

DRIVEWAY ENTRANCE SIGNING

SCALE: NONE SHEET NO. 1 OF 1 SHEETS STA. TO STA.

F.A.U. RTE.	SECTION	COUNTY	TOTAL SHEETS	SHEET NO.
*	3349-T	COOK	19	19
TC-26		CONTRACT NO. 62B82		
FED. ROAD DIST. NO. 1 ILLINOIS FED. AID PROJECT				