

STATE OF ILLINOIS
DEPARTMENT OF TRANSPORTATION

F.A.U. RTE.	SECTION	COUNTY	TOTAL SHEETS	SHEET NO.
1360	21-BZ-1-BR-1	COOK	20	1
		ILLINOIS	CONTRACT NO. 62B85	

FOR INDEX OF SHEETS, SEE SHEET NO. 2

IMPROVEMENT LOCATED IN THE CITY OF CHICAGO

TRAFFIC DATA

2014 ADT: 27,600
SPEED LIMIT: 30 MPH

PROPOSED
HIGHWAY PLANS

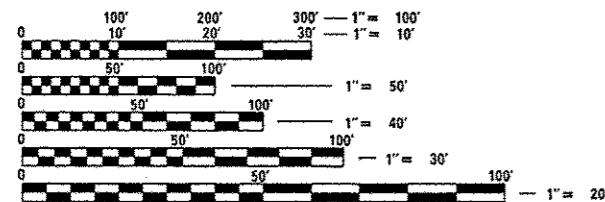
FAU ROUTE 1360: FOSTER AVE
OVER NORTH BRANCH CHICAGO RIVER
SECTION 21-BZ-1-BR-1
BRIDGE REHABILITATION
COOK COUNTY

C-91-163-16

IMPROVEMENT LOCATION
SN 016-0248

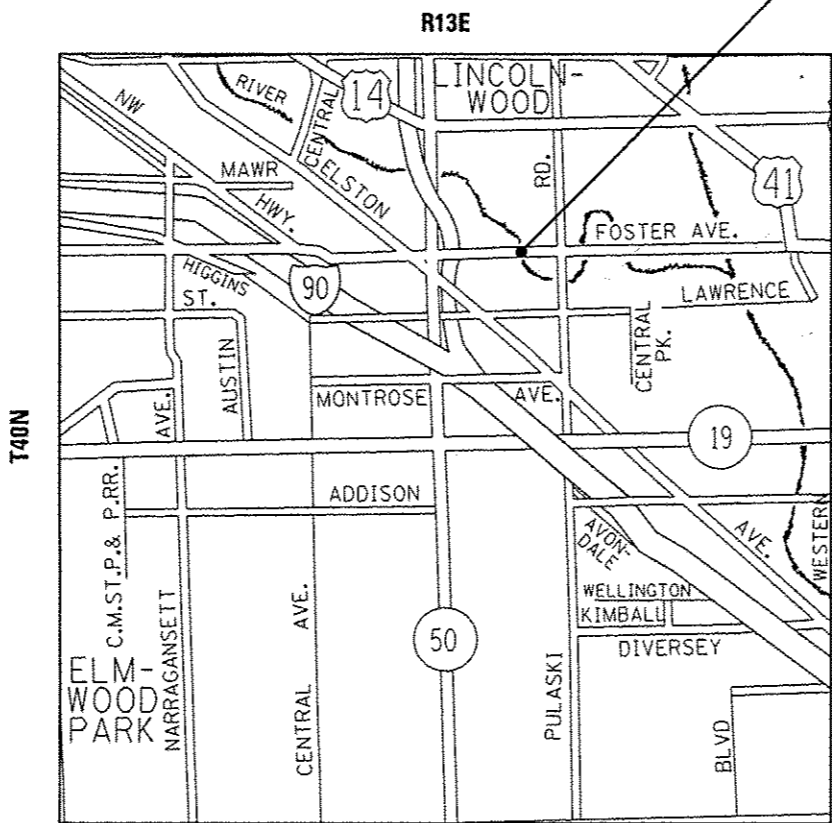


LOCATION OF SECTION INDICATED THUS: - [black rectangle] -



FULL SIZE PLANS HAVE BEEN PREPARED USING STANDARD ENGINEERING SCALES. REDUCED SIZED PLANS WILL NOT CONFORM TO STANDARD SCALES. IN MAKING MEASUREMENTS ON REDUCED PLANS, THE ABOVE SCALES MAY BE USED.

C.U.A.N
CHICAGO UTILITY ALERT NETWORK
1-312-744-7000



JEFFERSON TOWNSHIP

GROSS LENGTH = 255.00 FT. = 0.048 MILE
NET LENGTH = 255.00 FT. = 0.048 MILE

PROJECT ENGINEER: J. ALAIN MIDY (847) 221-3056
PROJECT MANAGER: ISSAM RAYYAN (847) 705-4178

CONTRACT NO. 62B85

STATE OF ILLINOIS
DEPARTMENT OF TRANSPORTATION

SUBMITTED 3-25 20 16

[Signature]
REGIONAL ENGINEER

May 6 20 16
[Signature]
ENGINEER OF DESIGN AND ENVIRONMENT

May 6 20 16
[Signature]
DIRECTOR OF PROGRAM DEVELOPMENT

PRINTED BY THE AUTHORITY
OF THE STATE OF ILLINOIS

SUMMARY OF QUANTITIES				CONSTRUCTION TYPE CODE				
CODE NO	ITEM	UNIT	TOTAL QUANTITIES	0014				
<i>CONCRETE</i> Z0012102	BRIDGE DECK SCARIFICATION 3/8"	SQ YD	896	896				
40603340	HOT-MIX ASPHALT SURFACE COURSE, MIX "D", N70	TON	7.3	7.3				
44000157	HOT-MIX ASPHALT SURFACE REMOVAL, 2"	SQ YD	65	65				
50102400	CONCRETE REMOVAL	CU YD	47	47				
50300255	CONCRETE SUPERSTRUCTURE	CU YD	47	47				
50800205	REINFORCEMENT BARS, EPOXY COATED	POUND	5050	5050				
52000110	PREFORMED JOINT STRIP SEAL	FOOT	272	272				
58700300	CONCRETE SEALER	SQ FT	6620	6620				
67000400	ENGINEER'S FIELD OFFICE, TYPE A	CAL MO	6	6				
67100100	MOBILIZATION	LSUM	1	1				
78000200	THERMOPLASTIC PAVEMENT MARKING LINE	FOOT	72	72				
78000400	THERMOPLASTIC PAVEMENT MARKING LINE	FOOT	8	8				
* 78008200	POLYUREA PAVEMENT MARKING TYPE I - LETTERS AND SYMBOLS	SQ FT	38.7	38.7				
* 78008210	POLYUREA PAVEMENT MARKING TYPE I - LINE 4"	FOOT	753	753				

SUMMARY OF QUANTITIES				CONSTRUCTION TYPE CODE				
CODE NO	ITEM	UNIT	TOTAL QUANTITIES	0014				
* 78008230	POLYUREA PAVEMENT MARKING TYPE I - LINE 6"	FOOT	114	114				
* 78100105	RAISED REFLECTIVE PAVEMENT MARKER (BRIDGE)	EACH	4	4				
78300200	RAISED REFLECTIVE PAVEMENT MARKER REMOVAL	EACH	4	4				
X7010216	TRAFFIC CONTROL AND PROTECTION, (SPECIAL)	LSUM	1	1				
Z0012193	BRIDGE DECK THIN POLYMER OVERLAY 3/8"	SQ YD	896	896				
Z0012754	STRUCTURAL REPAIR OF CONCRETE (DEPTH EQUAL TO OR LESS THAN 5 INCHES)	SQ FT	6	6				
Z0012755	STRUCTURAL REPAIR OF CONCRETE (DEPTH GREATER THAN 5 INCHES)	SQ FT	10	10				
Z0016200	DECK SLAB REPAIR (PARTIAL)	SQ YD	2	2				
Z0030850	TEMPORARY INFORMATION SIGNING	SQ FT	54.6	54.6				
Z0073200	TEMPORARY SHORING AND CRIBBING	EACH	1	1				
Z0073510	TEMPORARY TRAFFIC SIGNAL TIMING	EACH	12	12				

*Specialty Items

FILE NAME :	USER NAME :	DESIGNED :	REVISED :	STATE OF ILLINOIS DEPARTMENT OF TRANSPORTATION	FOSTER AVE OVER NORTH BRANCH CHICAGO RIVER (SN 016-0248) SUMMARY OF QUANTITIES	F.A.U. RTE.	SECTION	COUNTY	TOTAL SHEETS	SHEET NO.	
OFFICE :	PROJECT :	CHECKED :	REVISED :			1360	21-BZ-1-BR-1	COOK	20	3	
PLOT SCALE :	DATE :	DATE :	DATE :			CONTRACT NO. 62B85					
PLOT DATE :	DATE :	DATE :	DATE :			FED. ROAD DIST. NO. 1 ILLINOIS FED. AID PROJECT					

Rev.

Notes:

Plan dimensions and details relative to existing plans are subject to nominal construction variations. The Contractor shall field verify existing dimensions and details affecting new construction and make necessary approved adjustments prior to construction or ordering of materials. Such variations shall not be cause for additional compensation for a change in scope of the work, however, the Contractor will be paid for the quantity actually furnished based at the unit price bid for the work.

Existing reinforcement bars extending into the removal area shall be cleaned, straightened and incorporated into the new construction. Any reinforcement bars that are damaged during concrete removal shall be replaced with an approved bar splicer or anchorage system. Cost included with Concrete Removal.

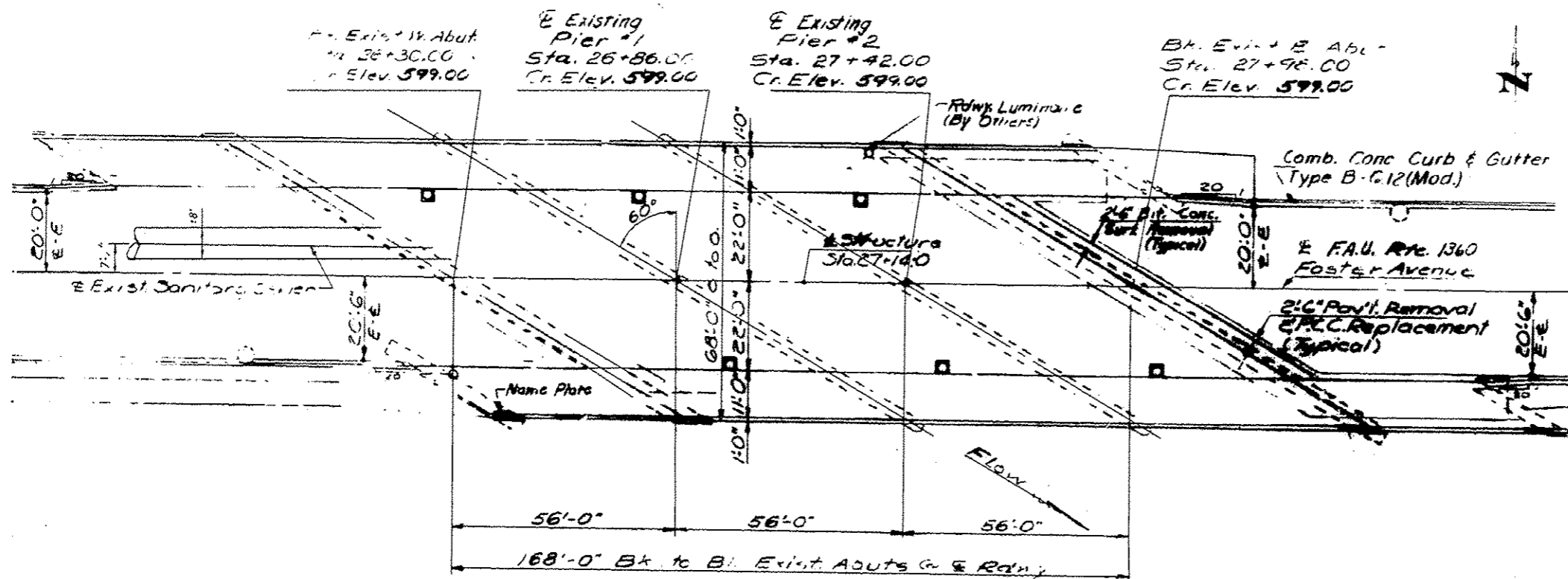
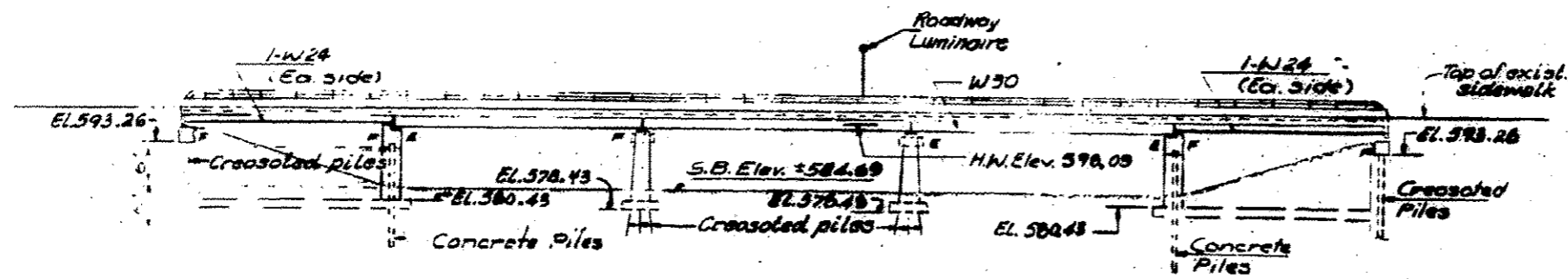
Areas of deck repairs shown are estimated. The Engineer shall show actual locations of deck repairs on As-built Plans.

The deck surface shall have its final finish lined according to Article 420.09(e)(1) of the Standard Specifications. Cost included with Concrete Superstructures.

If the analysis submitted to the Contractor for the jacking/temporary support system to be used shows temporary stiffeners are required to prevent web crippling or buckling, the stiffeners shall be steel and bolted to the web. If stiffeners are not required, hardwood timbers shall be installed tightly between the top and bottom flange to prevent flange rotation.

Joint openings shall be adjusted according to Article 520.04 of the Std. Specs. when the deck is poured at an ambient temperature other than 50° F.

Prior to pouring the new concrete deck, all heavy or loose rust, loose mill scale, and other loose or potentially detrimental foreign material shall be removed from the surfaces in contact with concrete. Tightly adhered paint may remain unless otherwise noted. Removal shall be accomplished by methods that will not damage the steel and the cost will be included in the pay item covering removal of the existing concrete.



TOTAL BILL OF MATERIAL

ITEM	UNIT	TOTAL
Concrete Bridge Deck Scarification 1/8"	SO YD	896
Concrete Removal	CU YD	47
Concrete Superstructure	CU YD	47
Reinforcement Bars, Epoxy Coated	Pound	5,050
Preformed Joint Strip Seal	Foot	272
Concrete Sealer	SO FT	6,620
Bridge Deck Thin Polymer Overlay 1/8"	SO YD	896
Structural Repair of Concrete (Depth Equal to or Less Than 5 Inches)	SO FT	6
Structural Repair of Concrete (Depth Greater Than 5 Inches)	SO FT	10
Deck Slab Repair (Partial)	SO YD	2
Temporary Shoring and Cribbing	Each	1

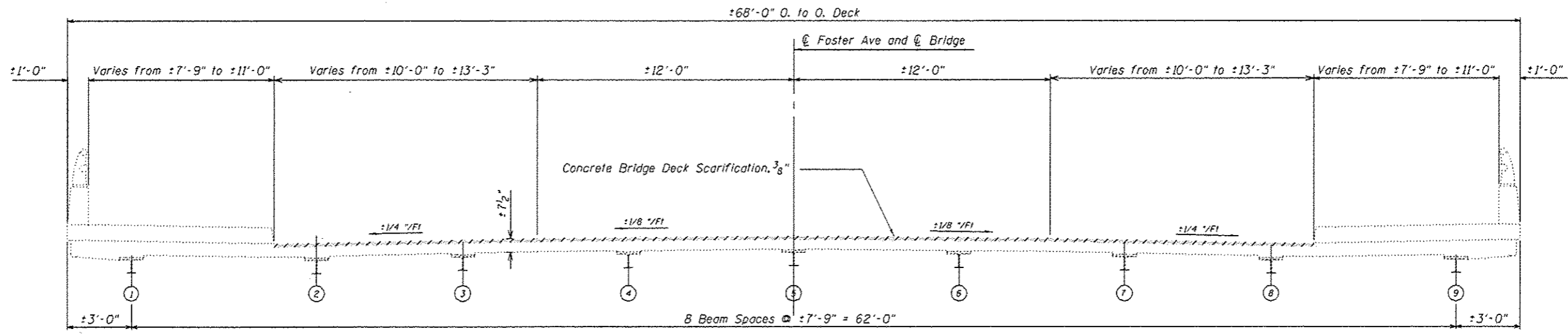
* Apply to area, shown on sheet 2 and 3 of 9 and to new concrete areas adjacent at joint.



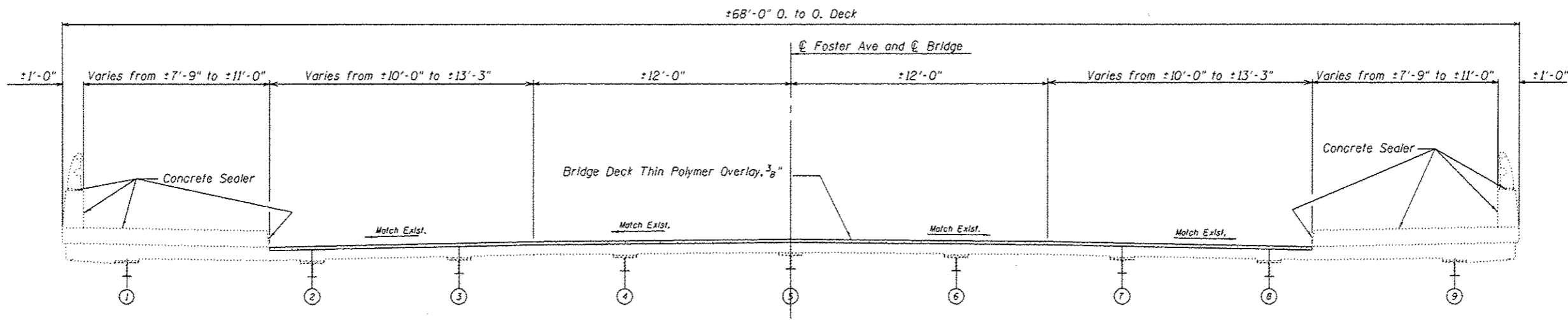
David Carl Puzey 5/3/16
Expires 11/30/16

DESIGNED - RAD	EXAMINED -	DATE -	STATE OF ILLINOIS DEPARTMENT OF TRANSPORTATION	FOSTER AVE OVER NORTH BRANCH CHICAGO RIVER (SN 016-0248) GENERAL PLAN AND ELEVATION	F.A.U. RTE.	SECTION	COUNTY	TOTAL SHEETS	SHEET NO.
CHECKED - CEC	PASSED -	REVISED -			1360	21-BZ-1-BR-1	COOK	20	5
DRAWN -	ACTING ENGINEER OF STRUCTURAL SERVICES	REVISED -	SHEET NO. 1 OF 9 SHEETS		CONTRACT NO. 62885				
CHECKED -	ACTING ENGINEER OF BRIDGES AND STRUCTURES	REVISED -			ILLINOIS FED. AID PROJECT				

5/3/2016 10:51:19 AM



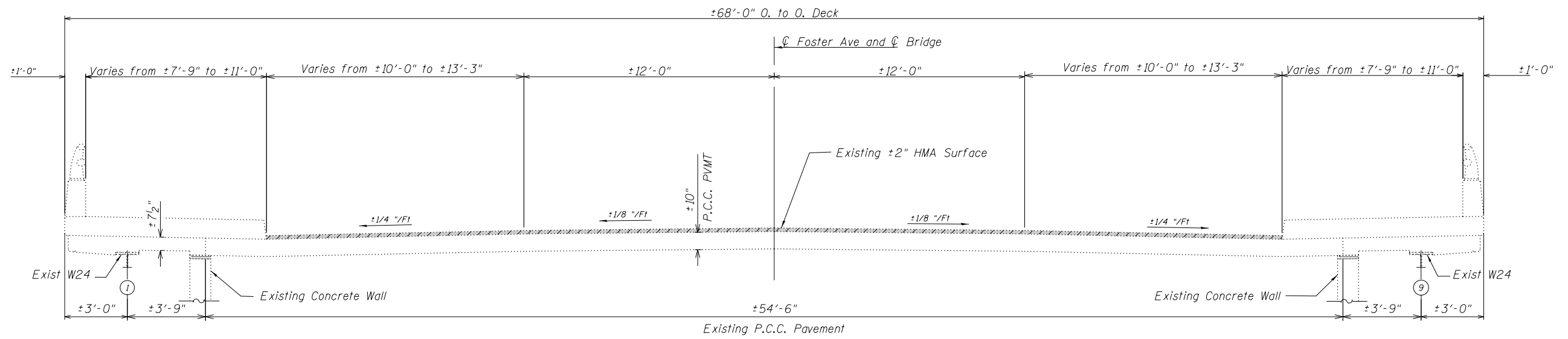
TYPICAL CROSS SECTION - REMOVAL



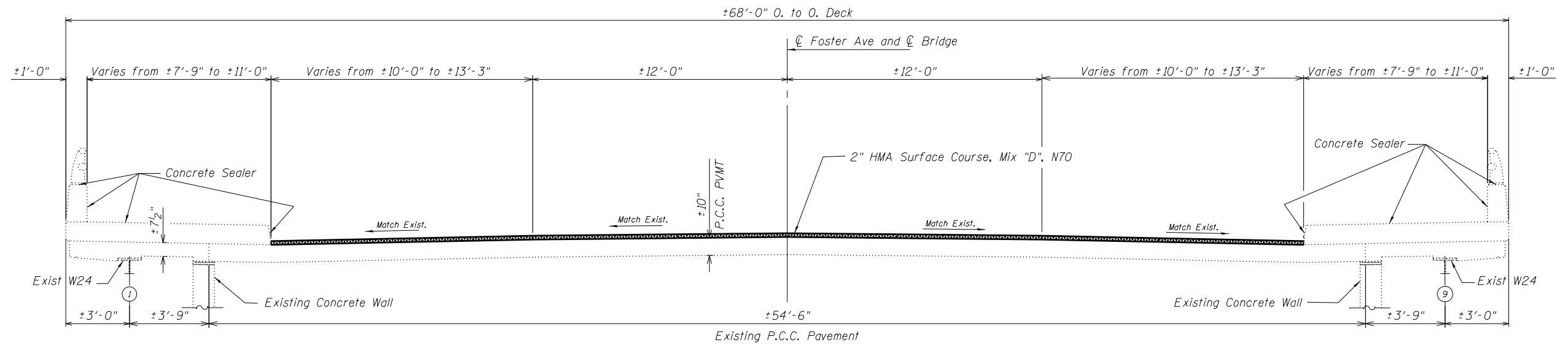
TYPICAL CROSS SECTION - PROPOSED

5/3/2016 10:52:17 AM

DESIGNED -	EXAMINED	DATE -	STATE OF ILLINOIS DEPARTMENT OF TRANSPORTATION	FOSTER AVE OVER NORTH BRANCH CHICAGO RIVER (SN 016-0248) CROSS SECTION	F.A.U. RTE.	SECTION	COUNTY	TOTAL SHEETS	SHEET NO.	
CHECKED -	ACTING ENGINEER OF STRUCTURAL SERVICES	REVISED			1360	21-BZ-1-BR-1	COOK	20	6	
DRAWN -	PASSED	REVISED			SHEET NO. 2 OF 9 SHEETS		CONTRACT NO. 62885			
CHECKED -	ACTING ENGINEER OF BRIDGES AND STRUCTURES	REVISED			ILLINOIS FED. AID PROJECT					



TYPICAL APPROACH SPAN CROSS SECTION - REMOVAL



TYPICAL APPROACH SPAN CROSS SECTION - PROPOSED

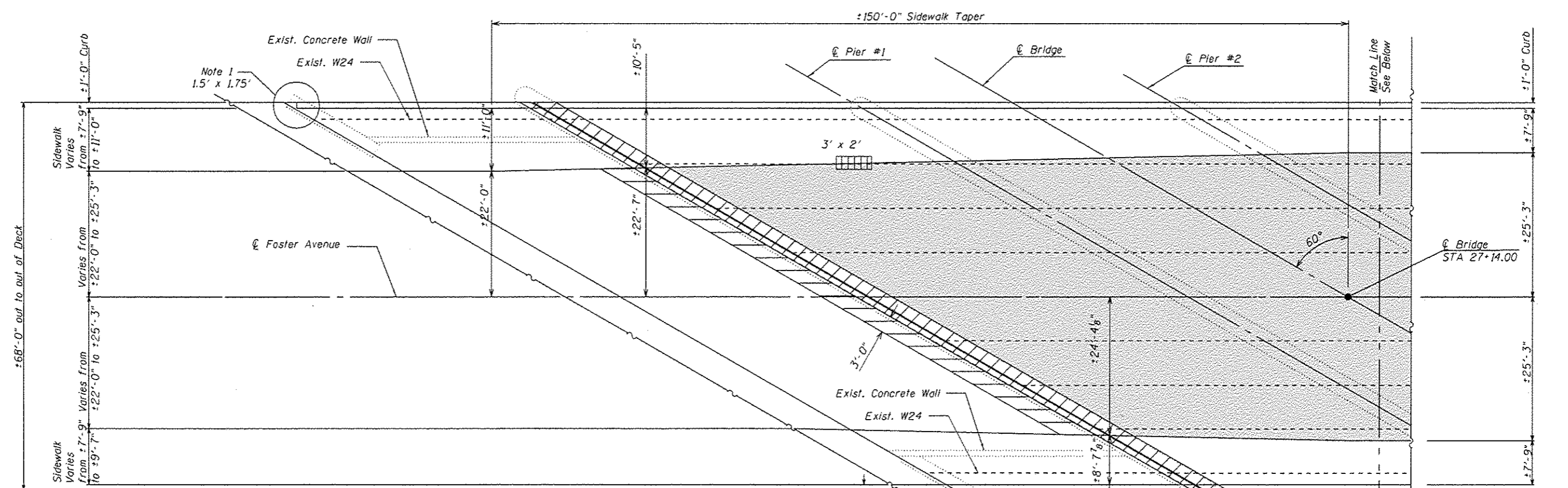
Legend:

- Existing ±2" HMA Surface Course. See Plan on Sheet 4 of 9 for extent of Removal
- 2" HMA Surface Course, Mix "D", N70

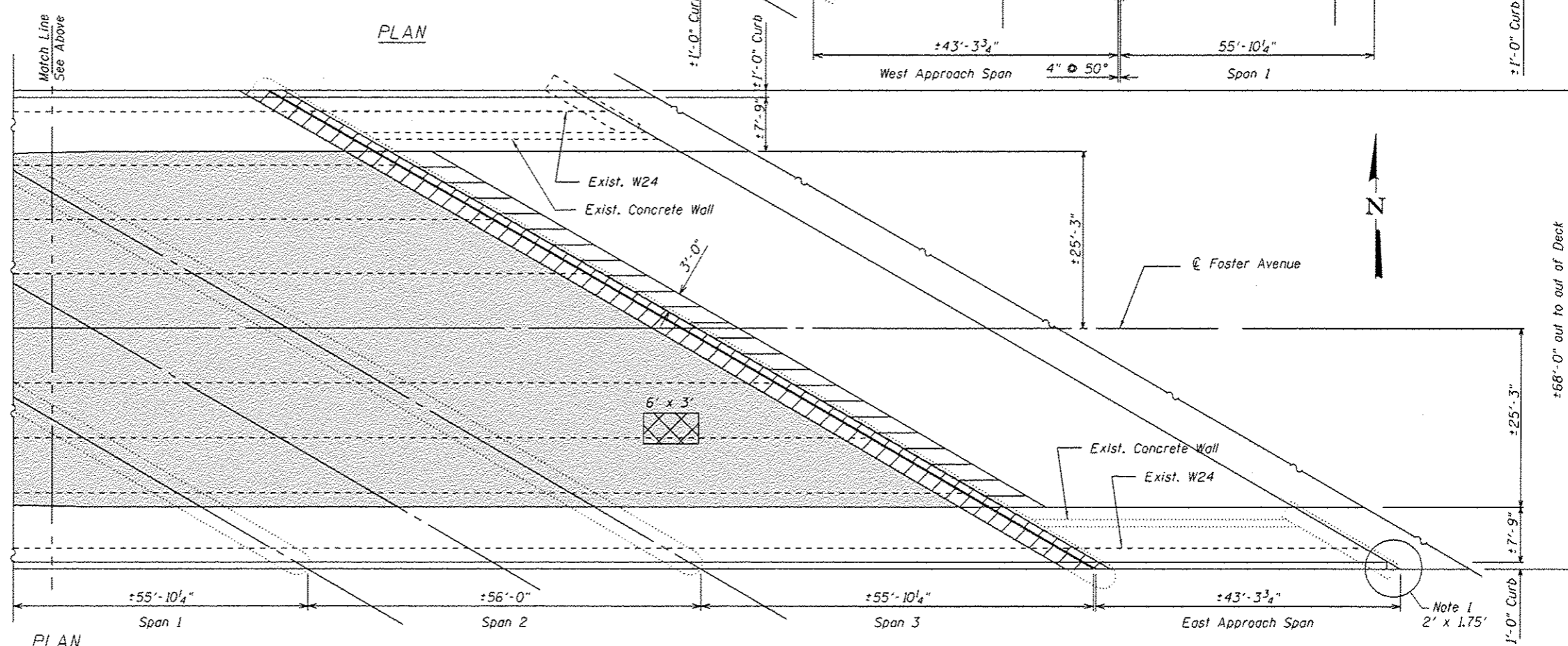
3/30/2016 3:59:21 PM

DESIGNED -	EXAMINED	DATE -	STATE OF ILLINOIS DEPARTMENT OF TRANSPORTATION	FOSTER AVE OVER NORTH BRANCH CHICAGO RIVER (SN 016-0248) CROSS SECTION	F.A.U. RTE.	SECTION	COUNTY	TOTAL SHEETS	SHEET NO.	
CHECKED -	ACTING ENGINEER OF STRUCTURAL SERVICES				1360	21-BZ-1-BR-1	COOK	20	7	
DRAWN -	PASSED	REVISED			CONTRACT NO. 62B85					
CHECKED -	ACTING ENGINEER OF BRIDGES AND STRUCTURES	REVISED			SHEET NO. 3 OF 9 SHEETS					

ILLINOIS FED. AID PROJECT

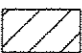



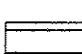


PLAN



PLAN

LEGEND

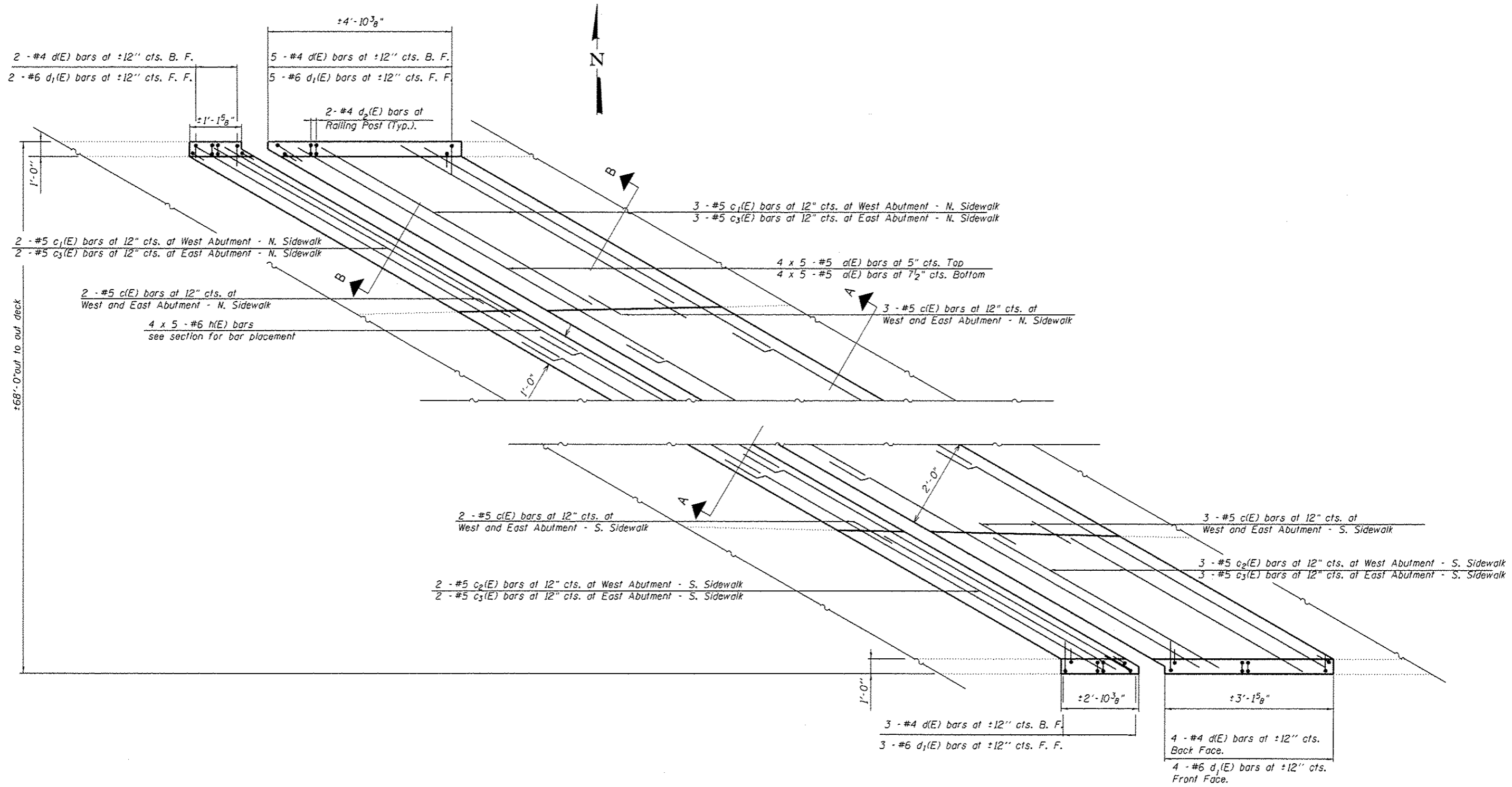
-  EXPANSION JOINT TO BE RECONSTRUCTED
-  DECK SLAB REPAIR (PARTIAL)
-  SHADED AREA SHALL HAVE:
1. CONCRETE BRIDGE DECK SCARIFICATION, 3/8"
2. BRIDGE DECK THIN POLYMER OVERLAY, 3/8"
-  STRUCTURAL REPAIR OF CONCRETE (DEPTH EQUAL TO OR LESS THAN 5 IN)
-  - 2" HMA Surface Removal
- 2" HMA Surface Course, Mix "D", N70

NOTES:

1. Location of Structural Repair of Concrete (Depth Greater Than 5 Inches) at the end of the parapet wall at location of guardrail connection. Reconnect Guardrail per Standard 631026-06. Cost included in Structural Repair of Concrete (Depth Greater Than 5 Inches)

5/3/2016 10:52:29 AM

DESIGNED -	EXAMINED -	DATE -	STATE OF ILLINOIS DEPARTMENT OF TRANSPORTATION	FOSTER AVE OVER NORTH BRANCH CHICAGO RIVER (SN 016-0248) DECK PLAN	F.A.U. RTE.	SECTION	COUNTY	TOTAL SHEETS	SHEET NO.
CHECKED -	PASSED -	REVISED -			1360	21-BZ-1-BR-1	COOK	20	8
DRAWN -	ACTING ENGINEER OF BRIDGES AND STRUCTURES	REVISED -	SHEET NO. 4 OF 9 SHEETS		CONTRACT NO. 62885				
CHECKED -	ACTING ENGINEER OF STRUCTURAL SERVICES	REVISED -	ILLINOIS FED. AID PROJECT						



Notes:
 See Sheet 6 and 7 of 9 for superstructure details and Bill of Material.
 See Sheet 6 and 7 of 9 for parapet reinforcement.

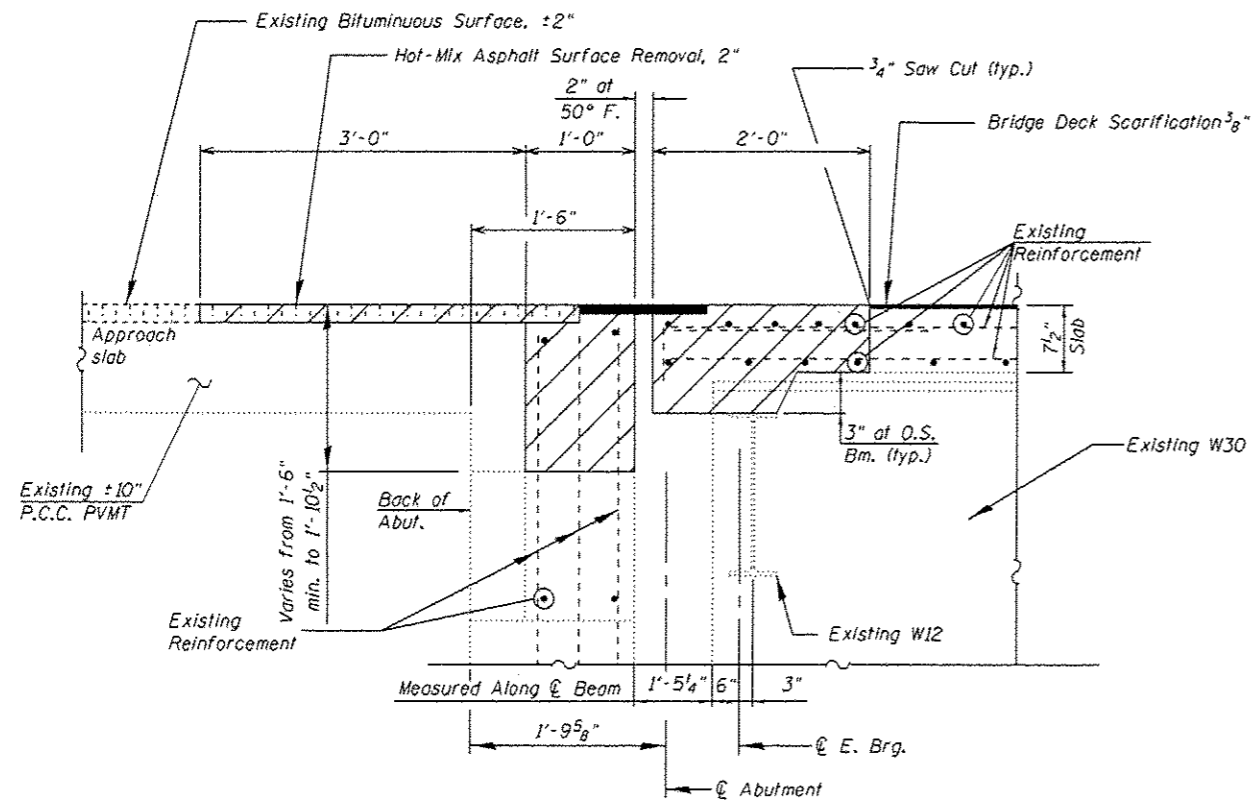
PLAN - WEST JOINT AT WEST ABUTMENT
 (EAST JOINT AT EAST ABUTMENT SIMILAR)

MINIMUM BAR LAP
 #5 bar = 3'-6"
 #6 bar = 4'-0"

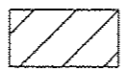
5/3/2016 10:52:30 AM

DESIGNED -	EXAMINED	DATE -	STATE OF ILLINOIS DEPARTMENT OF TRANSPORTATION	FOSTER AVE OVER NORTH BRANCH CHICAGO RIVER (SN 016-0248) JOINT DETAILS	F.A.U. RTE.	SECTION	COUNTY	TOTAL SHEETS	SHEET NO.	
CHECKED -	PASSED	REVISED			1360	21-BZ-1-BR-1	COOK	20	9	
DRAWN -	ACTING ENGINEER OF BRIDGES AND STRUCTURES	REVISED			CONTRACT NO. 62885					
CHECKED -	ACTING ENGINEER OF STRUCTURAL SERVICES	REVISED			SHEET NO. 5 OF 9 SHEETS					

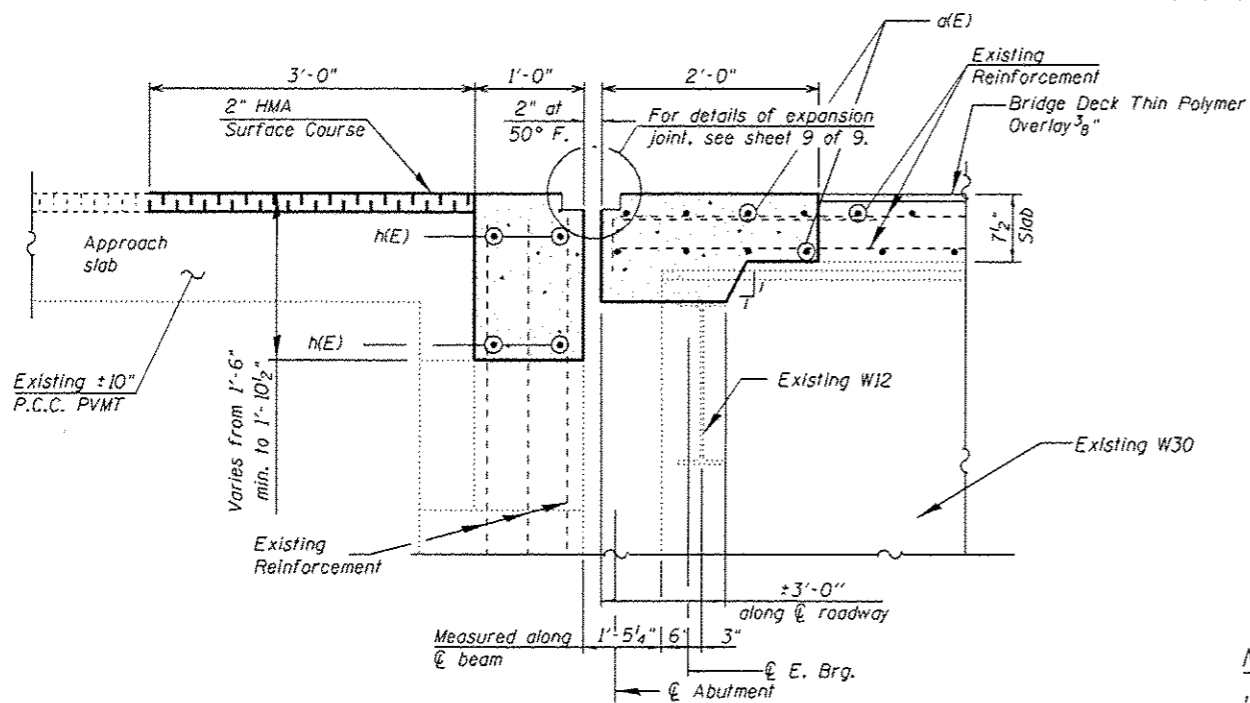
ILLINOIS FED. AID PROJECT



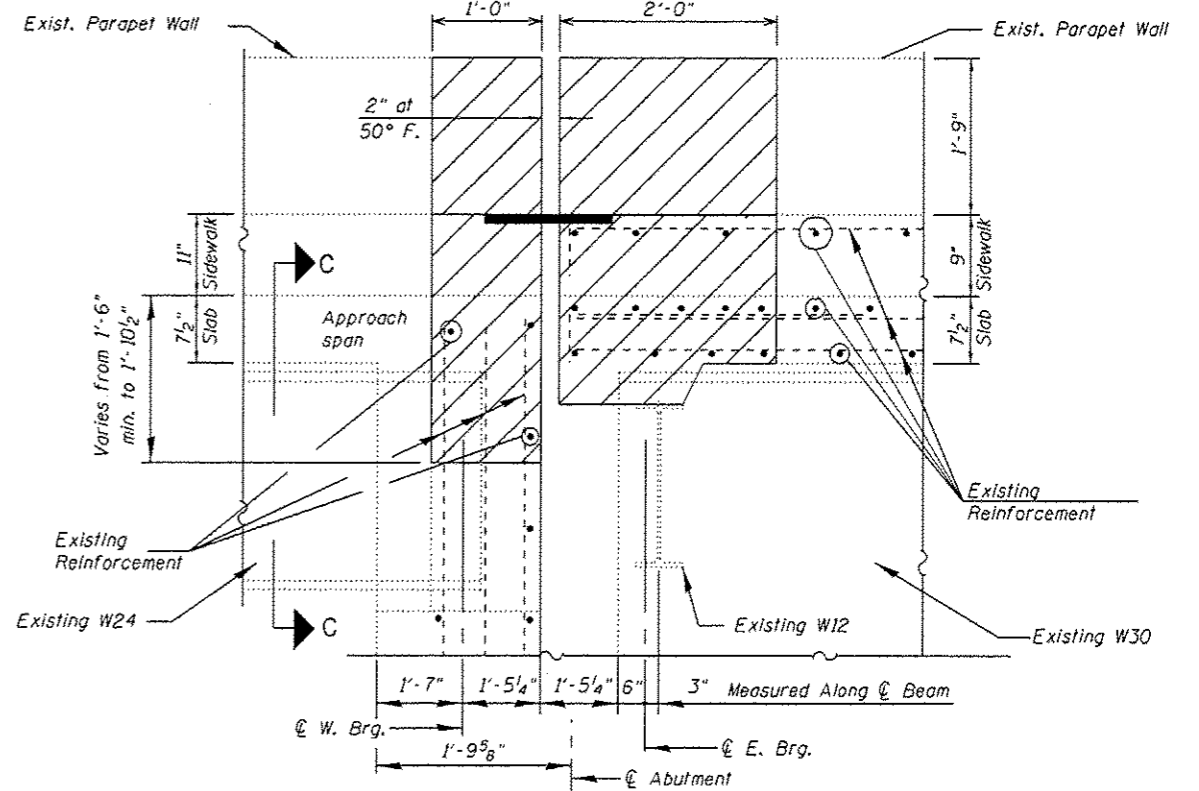
SECTION A-A
(EXISTING)



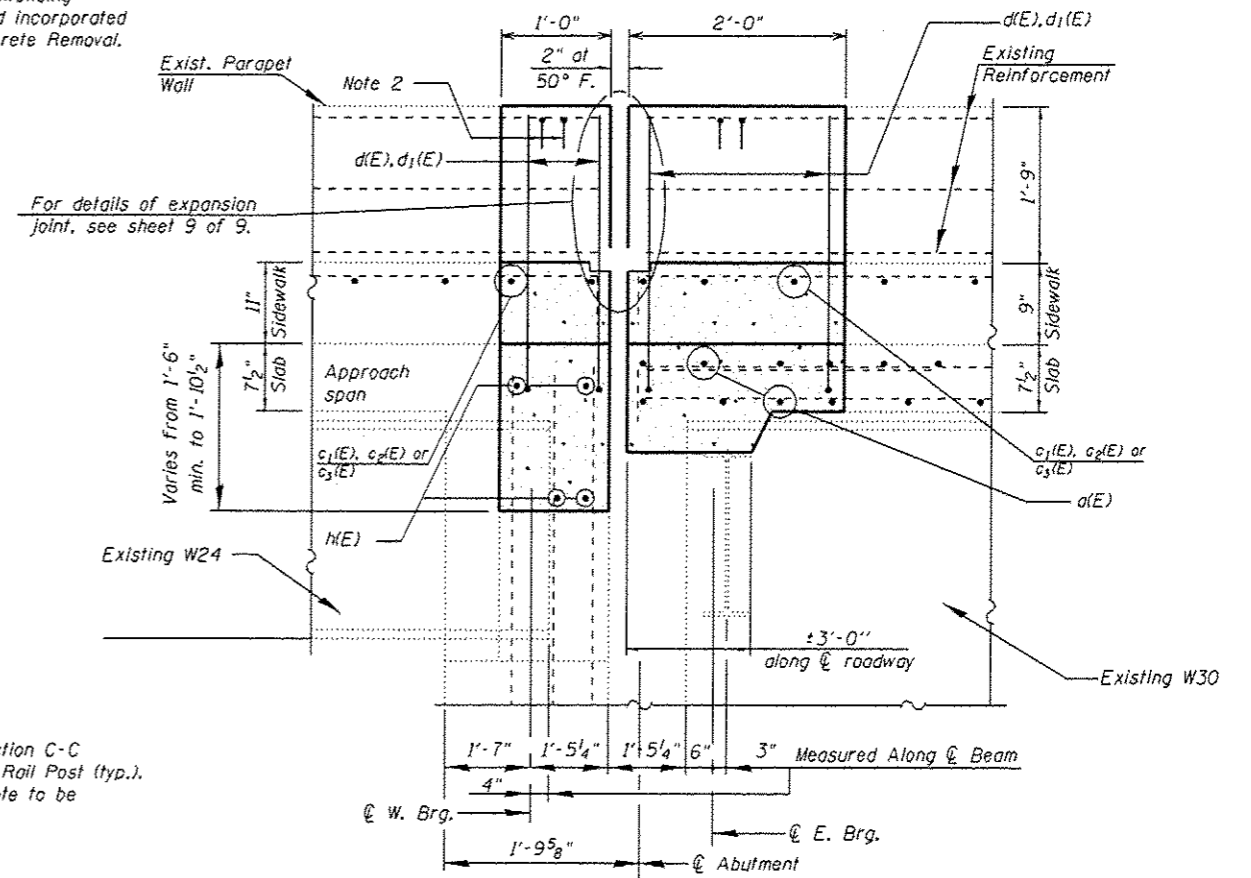
Hatched area indicated Concrete Removal. Perimeters of Concrete Removal area shall be saw cut 3/4" prior to the removal of the Concrete. Existing reinforcement extending into removal area shall be cleaned, straightened and incorporated into the new construction. cost included with Concrete Removal.



SECTION A-A
(PROPOSED)



SECTION B-B
(EXISTING)



SECTION B-B
(PROPOSED)

Notes:

1. See Sheet 7 of 9 for Existing Section C-C
2. Place 2 $d_2(E)$ bars at location of Rail Post (typ.).
3. Post anchorage embedded in concrete to be removed shall not be damaged.

5/7/2016 10:52:31 AM

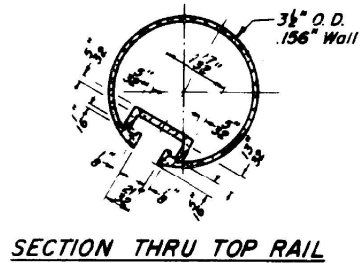
DESIGNED -	EXAMINED	DATE -
CHECKED -	PASSED	REVISED
DRAWN -	ACTING ENGINEER OF BRIDGES AND STRUCTURES	REVISED
CHECKED -		

STATE OF ILLINOIS
DEPARTMENT OF TRANSPORTATION

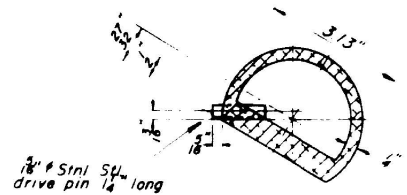
FOSTER AVE OVER NORTH BRANCH CHICAGO RIVER (SN 016-0248)
STRUCTURE DETAILS

SHEET NO. 6 OF 9 SHEETS

F.A.U. RTE. 1360	SECTION 21-BZ-1-BR-1	COUNTY COOK	TOTAL SHEETS 20	SHEET NO. 10
				CONTRACT NO. 62B85
ILLINOIS FED. AID PROJECT				

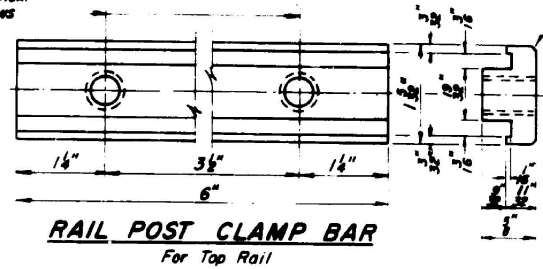


SECTION THRU TOP RAIL



SECTION THRU SPLICE
TOP RAIL

Drill & tap for 1/2 (stnl. stl.) hex. head cap screws



RAIL POST CLAMP BAR
For Top Rail

Bevel corners 1/8"-45°(Typ)

FOR INFORMATION ONLY

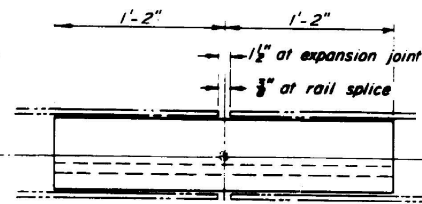
NOTES:

- All Posts shall be normal to parapet
- All Aluminum Alloy Extruded Rail shall be supplied in modular lengths of 30 feet, except at the end of bridge or over open joints in bridge deck where the rail shall be attached to a minimum of 2 posts. If the rail is on a horizontal curve of 2300 foot radius or less, the modular lengths may be reduced but shall be attached to a minimum of 2 posts
- All joints in rail shall be spliced per detail
- Provide 1-1/8" and 2-1/16" Aluminum Shims for 25% of the Posts
- Rail elements shall be parallel to Grade - high spots shall be ground and low spots shimmed
- Railing shall be in accordance with Section 508 of the Standard Specifications, except as noted, and shall be paid for at the contract unit price per lineal foot for ALUMINUM RAILING, TYPE L
- Aluminum alloy rail shall conform to ASTM B 221 alloy 6061-T6 or 6351-T5 with min yield 35 ksi, min tensile 38 ksi, and elongation of 10% in 2 inches

3/8" stnl. stl. drive pin 1/4" long



BOTTOM RAIL

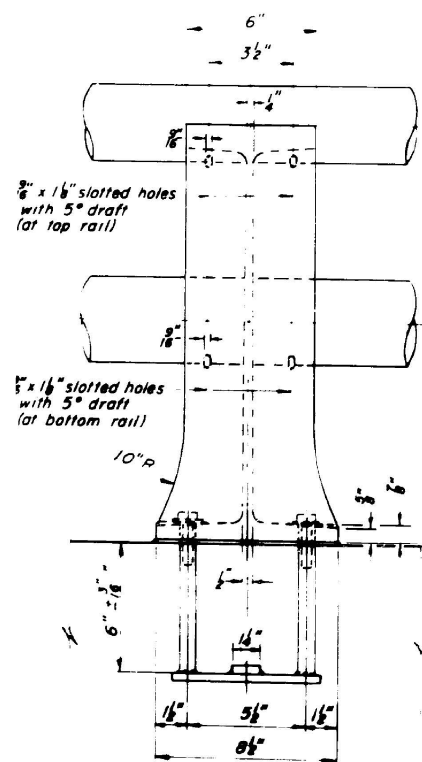


RAIL SPLICE

3/8" stnl. stl. drive pin 1/4" long

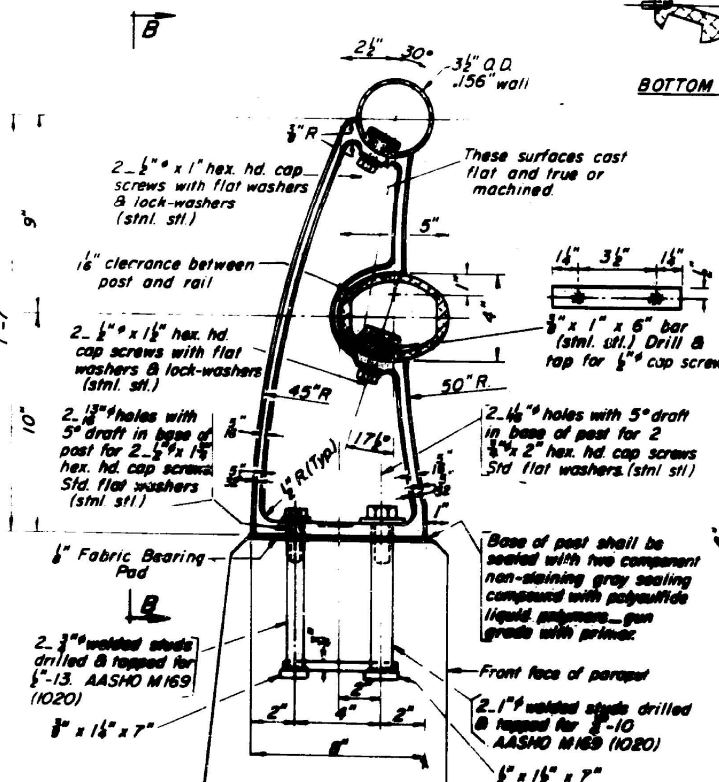


TOP RAIL

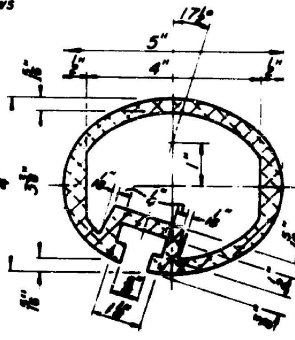


VIEW B-B

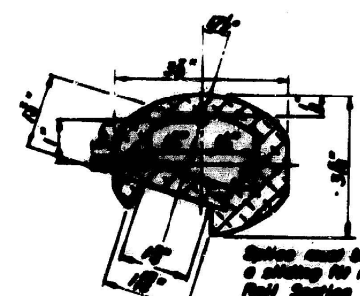
RAIL POST DETAILS



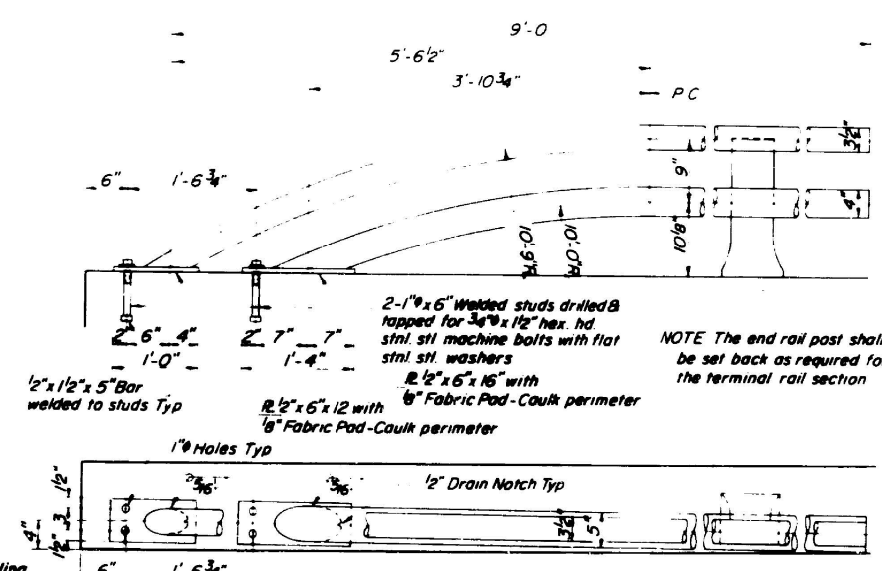
SECTION A-A



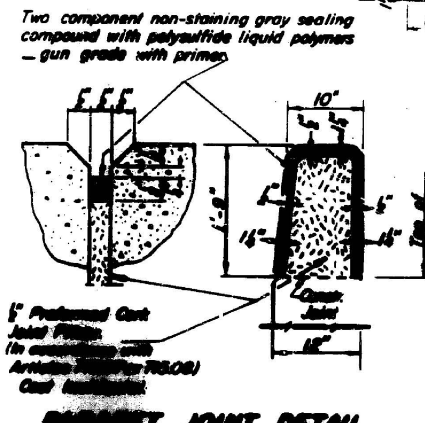
SEC. THRU ELLIPTICAL RAIL



SEC. THRU SPLICE



RAIL TERMINAL SECTION

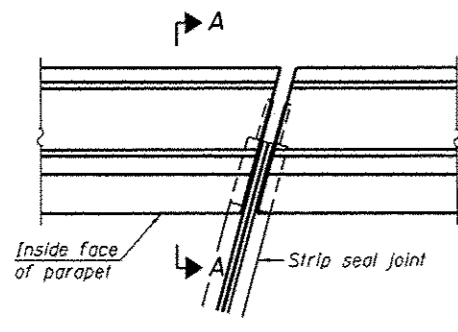


PARAPET JOINT DETAIL

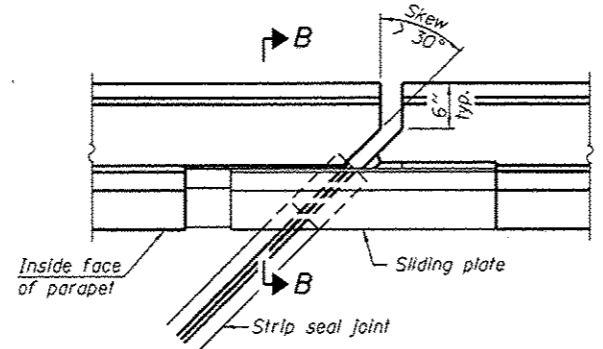
TYPE L ALUMINUM RAILING

3/30/2016 4:00:32 PM

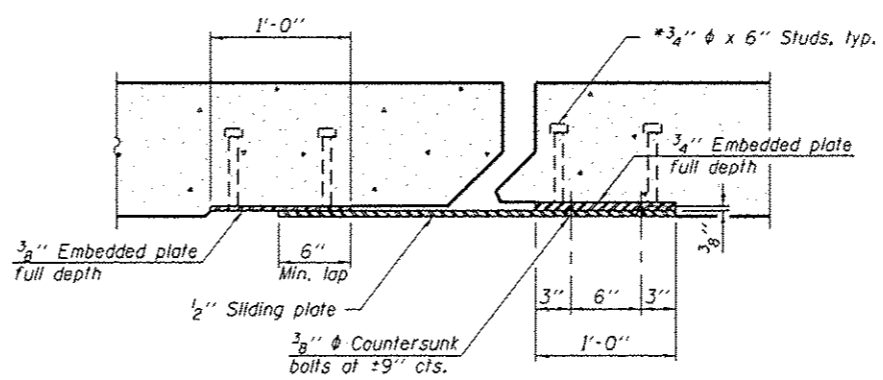
DESIGNED -	EXAMINED -	DATE -	STATE OF ILLINOIS DEPARTMENT OF TRANSPORTATION	FOSTER AVE OVER NORTH BRANCH CHICAGO RIVER (SN 016-0248) EXISTING ALUMINUM RAILING DETAILS	F.A.U. R.E.	SECTION	COUNTY	TOTAL SHEETS	SHEET NO.	
CHECKED -	ACTING ENGINEER OF STRUCTURAL SERVICES				1360	21-BZ-1-BR-1	COOK	20	12	
DRAWN -	PASSED	REVISED			CONTRACT NO. 62B85					
CHECKED -	ACTING ENGINEER OF BRIDGES AND STRUCTURES	REVISED			SHEET NO. 8 OF 9 SHEETS					
						ILLINOIS FED. AID PROJECT				



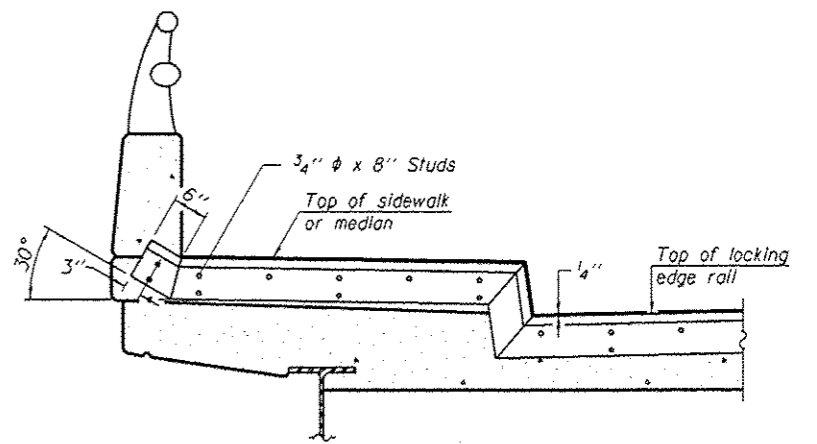
PLAN
(For skews $\leq 30^\circ$)



PLAN
(For skews $> 30^\circ$)
Showing point block

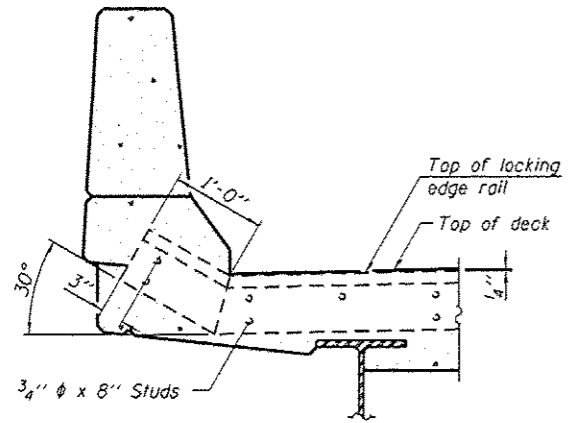


SECTION C-C

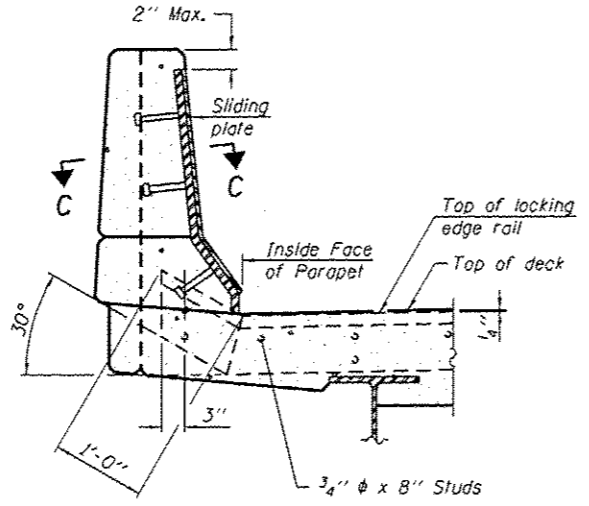


TYPICAL END TREATMENT AT SIDEWALK OR MEDIAN

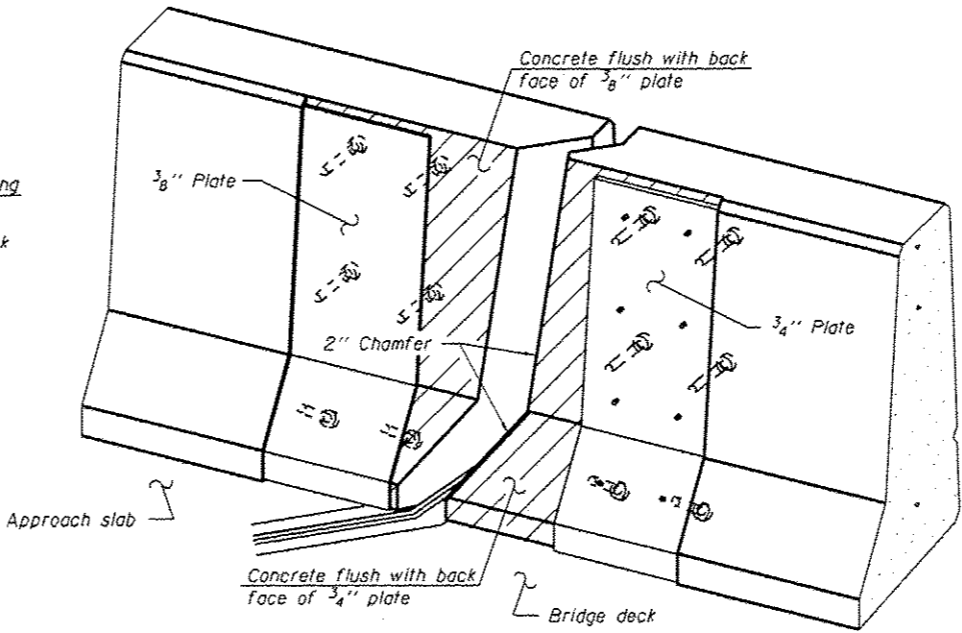
Shorter plates with a single row of studs at 12" cts. may be necessary on medians which are shallower than 9". See manufacturer's recommendation.



SECTION A-A



SECTION B-B



TRIMETRIC VIEW
(Showing back plates only)

Notes:
The strip seal shall be made continuous and shall have a minimum thickness of 1/4". The configuration of the strip seal shall match the configuration of the Locking Edge Rails. Open or "webbed" strip seal gland configurations are not permitted. The gland shall be sized for a maximum rated movement of 4 inches.

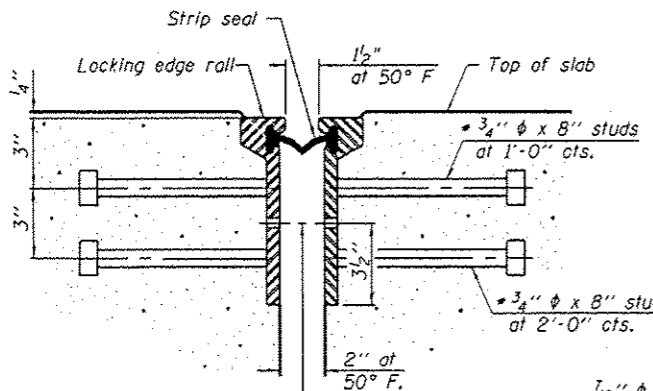
The Locking Edge Rails depicted are conceptual only, except for the minimum dimensions shown. The actual configuration of the Locking Edge Rails and matching strip seal may vary from manufacturer to manufacturer. Flanged edge rails will not be allowed. Locking Edge Rails may be spliced at slope discontinuities.

The manufacturer's recommended installation methods shall be followed.

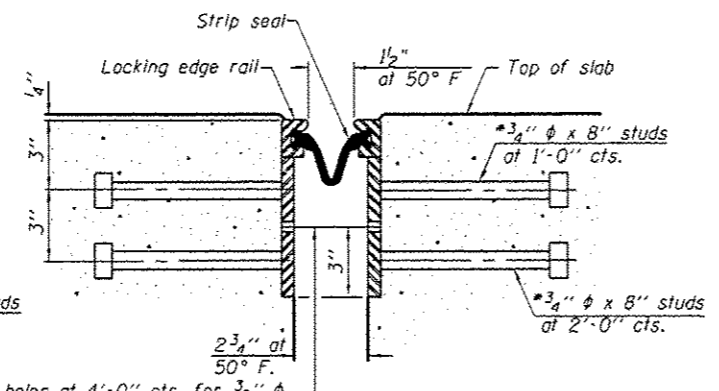
The joint opening and deck dimensions detailed on the superstructure are based on a rolled rail expansion joint. If the Contractor elects to use the welded rail expansion joint, the opening and deck dimensions shall be modified according to the dimensions detailed on this sheet. Required modifications shall be made at no additional cost to the State.

All steel components shall be galvanized after fabrication according to Article 520.03 of the Standard Specifications. Maximum space between rail segments shall be 3/16". Sealed with a suitable sealant. Joints in rails within 10 ft. of curbs shall be welded.

Parapet plates and anchorage studs for skews $> 30^\circ$ included in the cost of Preformed Joint Strip Seal.



SECTION THRU ROLLED RAIL JOINT



SECTION THRU WELDED RAIL JOINT

7/16" ϕ holes at 4'-0" cts. for 3/8" ϕ bolts. All bolts shall be burned, sawed, or chipped off flush with the plates after forms are removed, typ.

7/16" ϕ holes at 4'-0" cts. for 3/8" ϕ bolts. All bolts shall be burned, sawed, or chipped off flush with the plates after forms are removed, typ.

ROLLED EXTRUDED RAIL

WELDED RAIL

LOCKING EDGE RAIL SPLICE

The inside of the locking edge rail groove shall be free of weld residue. Rolled rail shown, welded rail similar.

LOCKING EDGE RAILS

BILL OF MATERIAL

Item	Unit	Total
Preformed Joint Strip Seal	Foot	272

* Granular or solid flux filled headed studs conforming to Article 1006.32 of the Std. Specs. automatically end welded.

5/3/2016 10:54:30 AM

EJ-SSJ

1-27-12

DESIGNED -	EXAMINED -	DATE -
CHECKED -	ACTING ENGINEER OF STRUCTURAL SERVICES	
DRAWN -	PASSED -	REVISED -
CHECKED -	ACTING ENGINEER OF BRIDGES AND STRUCTURES	REVISED -

STATE OF ILLINOIS
DEPARTMENT OF TRANSPORTATION

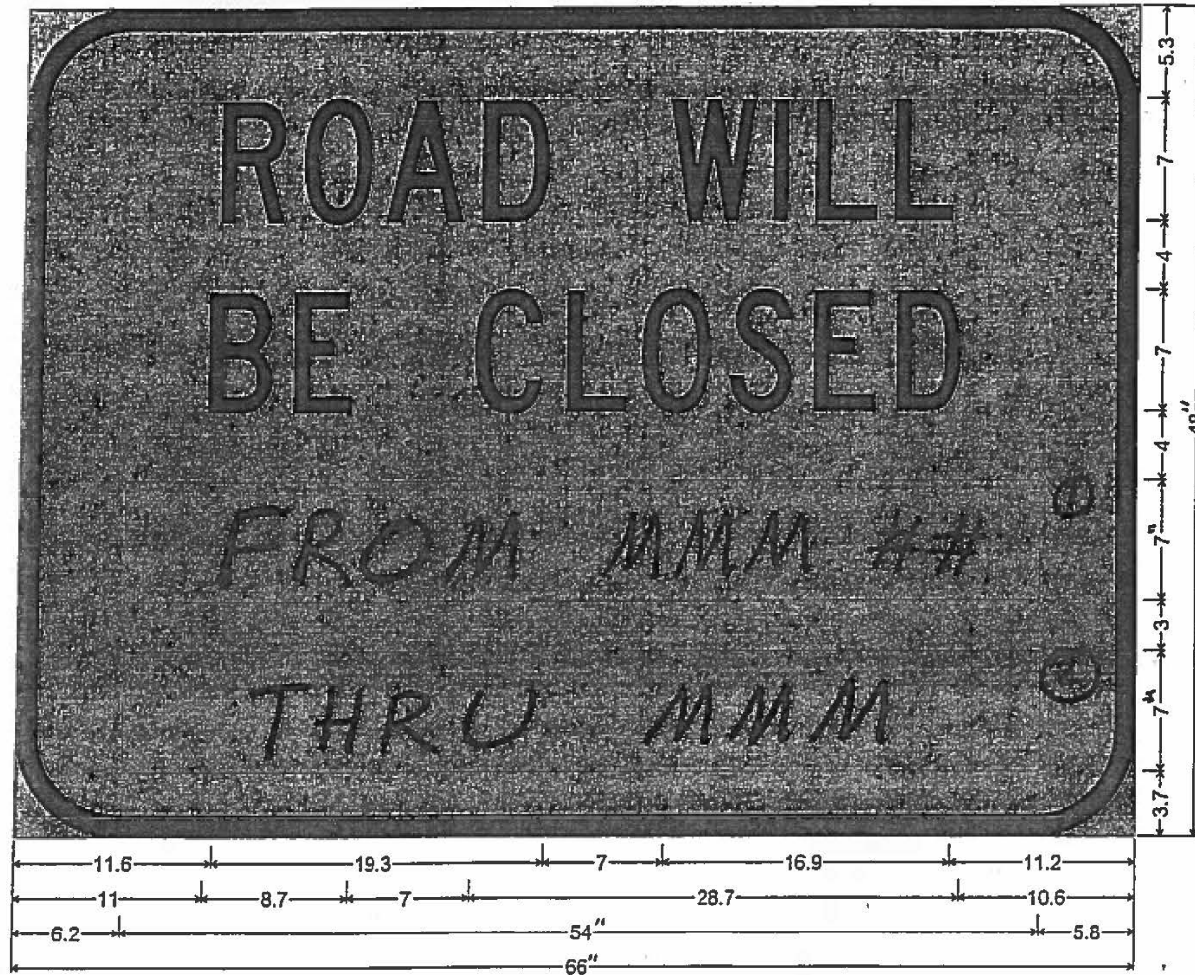
PREFORMED JOINT STRIP SEAL
STRUCTURE NO. 016-0248

SHEET NO. 9 OF 9 SHEETS

F.A.U. RTE.	SECTION	COUNTY	TOTAL SHEETS	SHEET NO.
1360	21-B2-1-BR-1	COOK	20	13
			CONTRACT NO. 62885	
ILLINOIS FED. AID PROJECT				

ARTERIAL ROAD INFORMATION SIGN
FOR ROADS TO BE FULLY CLOSED
AND DETOURED

SHALL BE PAID FOR AS TEMPORARY INFORMATION SIGNING.
ONE SIGN ASSEMBLY EQUALS 27.3 SQ. FT.



6.0" Radius, 1.3" Border, Black on Orange;
"ROAD WILL" C 2K; "BE CLOSED" C 2K; Rectangle Orange; Rectangle Orange; "HIGHWAY C" FONT

- ① OVERLAY PANEL ① TO CONTAIN STARTING DATE OF FULL CLOSURE AND DETOUR IMPLEMENTATION. (i.e. "FROM APR 2")
- ② OVERLAY PANEL ② TO CONTAIN ENDING MONTH OF FULL CLOSURE & DETOUR (i.e. "THRU JULY"). OMIT THE DATE ON PANEL ②; MONTH ONLY.

ERECT SIGN ASSEMBLY (POST-MOUNTED) WITH PANELS ① AND ② IN PLACE ON ROAD TO BE CLOSED IN EACH DIRECTION NEAR POINT OF CLOSURE OR WITHIN SECTION TO BE FULLY CLOSED TWO (2) WEEKS PRIOR TO START DATE OF FULL CLOSURE. REMOVE ASSEMBLY AFTER CLOSURE.

FILE NAME =	USER NAME = dahhr	DESIGNED -	REVISED -
pw\11084EBIDINTEG.111nois.gov\PIWIDOT\Documents\DOT Offices\District 1\Projects\011616\Drawings\Design\0116316-sht-pmk.dgn		CHECKED -	REVISED -
Default	PLOT SCALE = 100.0000' / in.	DATE -	REVISED -
	PLOT DATE = 3/30/2016		

STATE OF ILLINOIS
DEPARTMENT OF TRANSPORTATION

CLOSURE DETAIL SIGN
FOSTER AVE. OVER NORTH BRANCH CHICAGO RIVER
SCALE: 1" = 50' SHEET 1 OF 1 SHEETS STA. TO STA.

F.A.U. RTE.	SECTION	COUNTY	TOTAL SHEETS	SHEET NO.
1360	21-BZ-1-BR-1	COOK	20	15
CONTRACT NO. 62B85				
ILLINOIS FED. AID PROJECT				

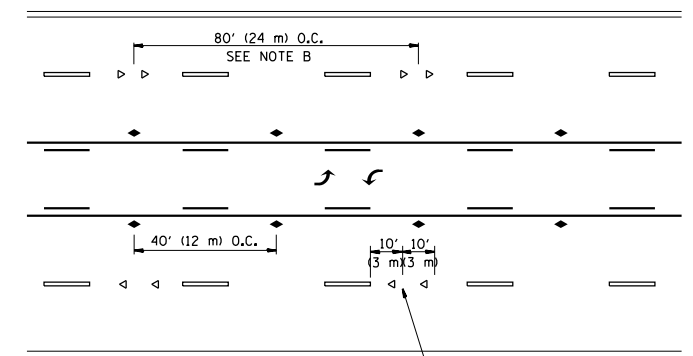


*** REDUCE TO 40' (12 m) O.C. ON CURVES WITH POSTED OR ADVISORY SPEED 45 M.P.H. (70 km/h) OR LESS.

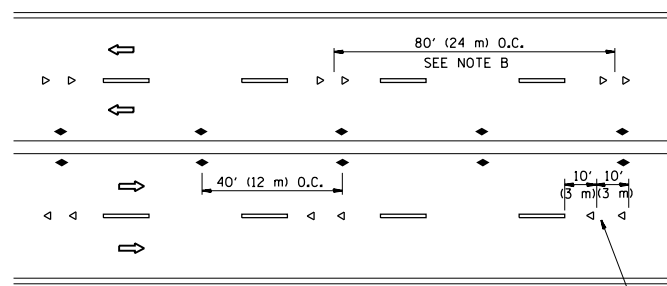
TWO-LANE/TWO-WAY



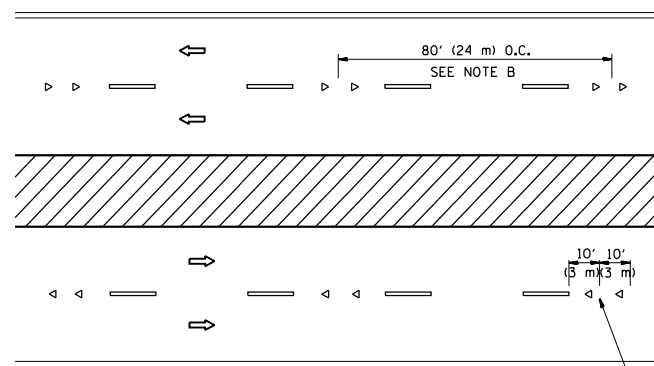
LANE REDUCTION TRANSITION



TWO-WAY LEFT TURN



MULTI-LANE/UNDIVIDED



MULTI-LANE/DIVIDED

GENERAL NOTES

1. MARKERS USED WITH DASHED LINES SHALL BE CENTERED IN THE GAP BETWEEN SEGMENTS.
2. MARKERS USED ADJACENT TO SOLID LINES SHALL BE OFFSET 2 TO 3 (50 TO 75) TOWARD TRAFFIC AS SHOWN.
3. MARKERS THROUGH TANGENTS LESS THAN 500' (150 m) IN LENGTH BETWEEN CURVES SHALL BE INSTALLED AT THE LESSER OF THE TWO CURVE SPACINGS.

SYMBOLS

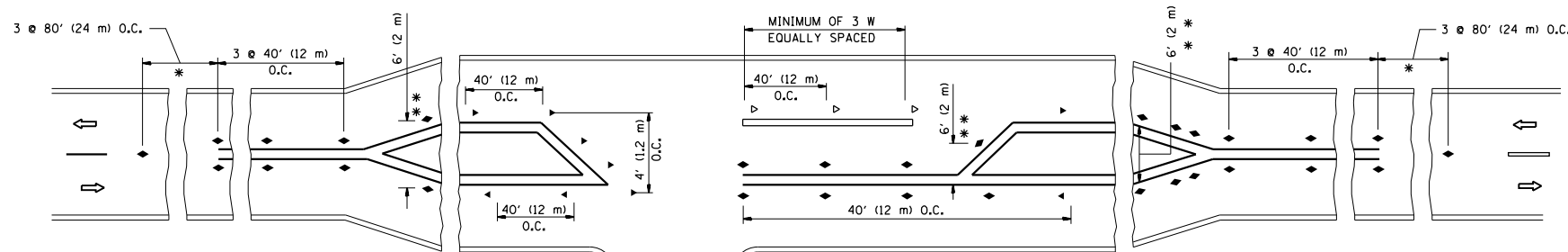
- YELLOW STRIPE
- WHITE STRIPE
- ◀ ONE-WAY AMBER MARKER
- ◁ ONE-WAY CRYSTAL MARKER (W/O)
- ◆ TWO-WAY AMBER MARKER

LANE MARKER NOTES

- A. USE DOUBLE LANE LINE MARKERS SPACED AS SHOWN.
- B. REDUCE TO 40' (12 m) O.C. ON CURVES WHERE ADVISORY SPEEDS ARE 10 M.P.H (20 km/h) LOWER THAN POSTED SPEEDS.

DESIGN NOTES

1. DOUBLE LANE LINE MARKERS SHALL BE USED UNLESS SPECIFIED OTHERWISE.
2. EXCEPT AS SHOWN ON THE LANE REDUCTION TRANSITION AND FREEWAY EXIT RAMP DETAIL, MARKERS ARE NOT TO BE SPECIFIED ON RIGHT EDGE LINES.
3. THE EXACT MARKER LIMITS, SPACING, AND COLOR SHALL BE INCLUDED IN THE PLANS WHEN STANDARD SPECIFICATIONS ARE NOT BEING USED.
4. MARKERS SHOULD NOT BE USED ALONGSIDE CURBS EXCEPT FOR EXTREMELY SHORT SECTIONS OF CURBS WHERE NOT MORE THAN TWO MARKERS WOULD BE INVOLVED.



LEFT TURN

* SEE TWO-LANE/TWO-WAY WHERE MARKERS CONTINUE
 ** WHERE THE MEDIAN WIDTH IS 6' (2 m) OR LESS USE TWO-WAY MARKERS.

All dimensions are in inches (millimeters) unless otherwise shown.

FILE NAME =	USER NAME = dahhr	DESIGNED -	REVISED - T. RAMMACHER 09-19-94
pw:\IL\084EBIDINTEG\illinois.gov\PIWIDOT\Documents\IDOT Offices\District 1\Projects\DI16\Drawings\Design\Diststd.dgn		DRAWN -	REVISED - T. RAMMACHER 03-12-99
	PLOT SCALE = 100.0000' / 1"	CHECKED -	REVISED - T. RAMMACHER 01-06-00
	PLOT DATE = 3/30/2016	DATE -	REVISED - C. JUCIUS 09-09-09




STATE OF ILLINOIS
 DEPARTMENT OF TRANSPORTATION

TYPICAL APPLICATIONS
 RAISED REFLECTIVE PAVEMENT MARKERS (SNOW-PLOW RESISTANT)






SCALE: NONE SHEET NO. 1 OF 1 SHEETS STA. TO STA.

F.A.U. RTE.	SECTION	COUNTY	TOTAL SHEETS	SHEET NO.
1360	21-BZ-1-BR-1	COOK	20	16
TC-11		CONTRACT NO. 62B85		
FED. ROAD DIST. NO. 1 ILLINOIS FED. AID PROJECT				

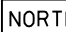

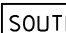


ROUTE MARKERS

-  FOR U.S. ROUTES
M1-40-2424
-  FOR ILLINOIS ROUTES
M1-50-2424
-  R.R., UNMARKED ROUTES
SPECIAL 24" x 18" VARIABLE
4" BLACK LETTERS ON WHITE
REFLECTIVE BACKGROUND

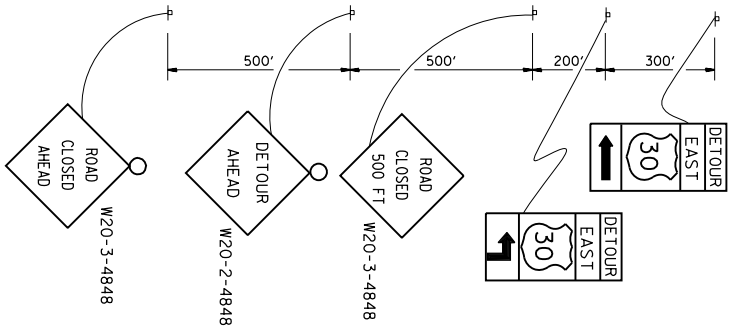
ARROWS SIGNS

-  M5-1L-2115
-  M5-1R-2115
-  M6-1-2115
-  M6-1-2115
-  M6-3-2115

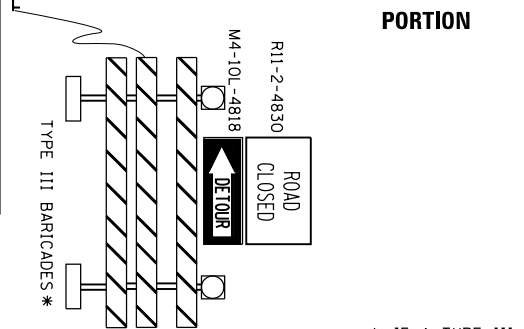
CARDINAL DIRECTION & DETOUR SIGNS

-  NORTH M3-1-2412
-  EAST M3-2-2412
-  SOUTH M3-3-2412
-  WEST M3-4-2412
-  DETOUR M4-8-2412

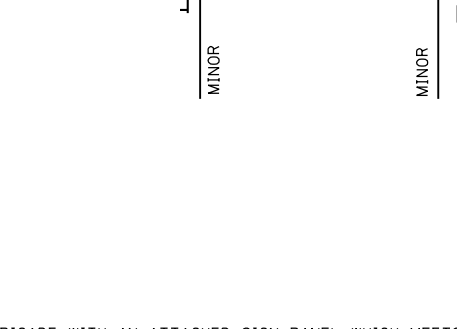
STATE ROUTE



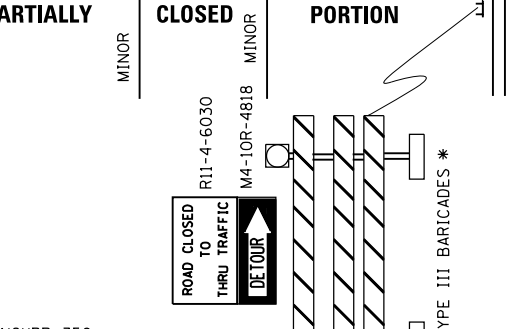
COMPLETELY CLOSED PORTION



PARTIALLY CLOSED PORTION



STATE ROUTE



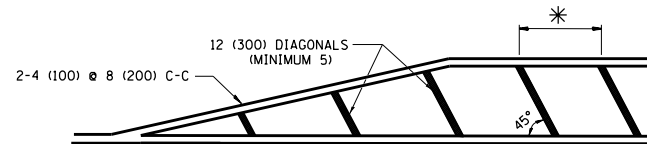
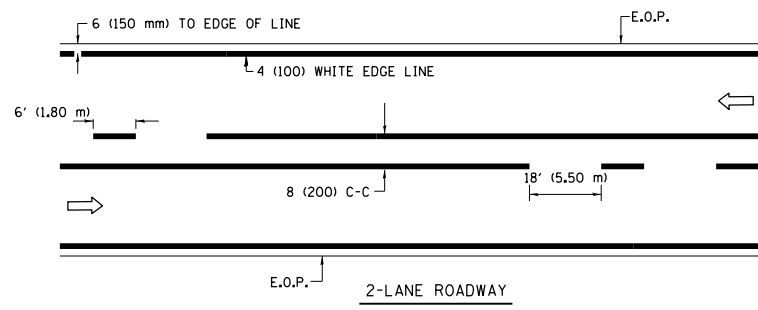
* IF A TYPE III BARRICADE WITH AN ATTACHED SIGN PANEL WHICH MEETS NCHRP 350 REQUIREMENTS IS NOT AVAILABLE, THE SIGNS SHALL BE MOUNTED, ABOVE THE BARRICADES, ON SEPARATE SIGNS SUPPORTS THAT MEET NCHRP 350 REQUIREMENTS.

FILE NAME =	USER NAME = dahhnr	DESIGNED -	REVISED - 10-18-02
p:\1\084EBID\INTEG\illinois.gov\PIW\DOT\Documents\DOT Offices\District 1\Projects\DI16\BROWN\Design\Diststd.dgn		CHECKED -	REVISED - R. BORO 09-14-09
		DATE -	REVISED -
			REVISED -

**STATE OF ILLINOIS
DEPARTMENT OF TRANSPORTATION**

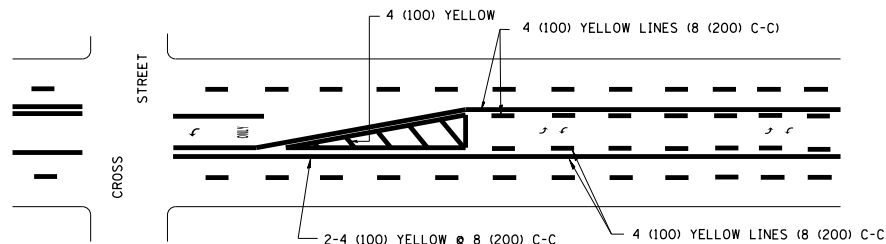
DETOUR SIGNING FOR CLOSING STATE HIGHWAYS	
SCALE: NONE	SHEET NO. 1 OF 1 SHEETS STA. TO STA.

F.A.U. RE.	SECTION	COUNTY	TOTAL SHEETS	SHEET NO.
1360	21-BZ-1-BR-1	COOK	20	17
TC-21		CONTRACT NO. 62B85		
FED. ROAD DIST. NO. 1 ILLINOIS FED. AID PROJECT				

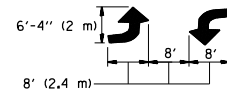


* FOR MEDIAN LENGTHS WHERE DIAGONAL SPACING CANNOT BE ATTAINED, USE 5 (FIVE) EQUALLY SPACED DIAGONAL LINES.
 * DIAGONAL LINE SPACING: 20' (6.1 m) C-C

PAINTED MEDIANS

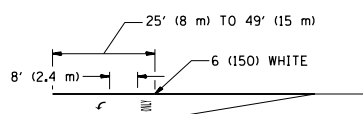
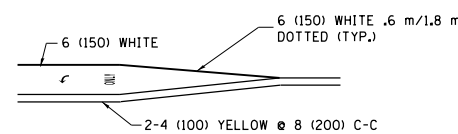


A MINIMUM OF TWO PAIRS OF TURN ARROWS SHALL BE USED, WHITE IN COLOR. ADDITIONAL PAIRS SHALL BE PLACED AT 200' (60 m) TO 300' (90 m) INTERVALS.



MEDIAN WITH TWO-WAY LEFT TURN LANE

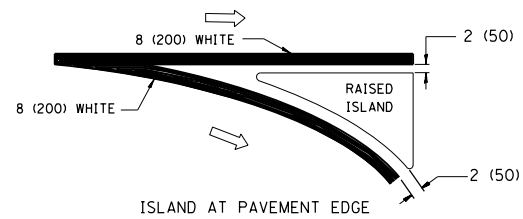
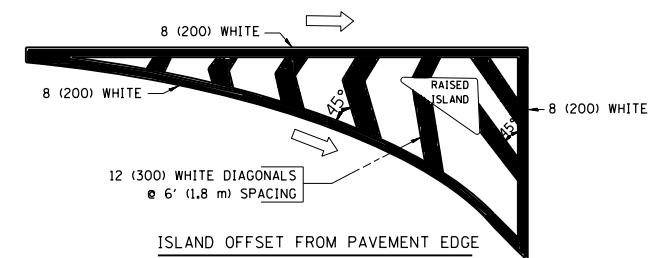
TYPICAL PAINTED MEDIAN MARKING



FULL SIZE LETTERS 8' (2.4 m) AND ARROWS SHALL BE USED.
 AREA = 15.8 SQ. FT. (1.47 m²) ONLY AREA = 22.9 SQ. FT. (2.13 m²)
 * TURN LANES IN EXCESS OF 400' (120 m) IN LENGTH MAY HAVE AN ADDITIONAL SET OF ARROW - "ONLY" INSTALLED MIDWAY BETWEEN THE OTHER TWO SETS OF ARROW - "ONLY".

TYPICAL LEFT (OR RIGHT) TURN LANE

TYPICAL TURN LANE MARKING

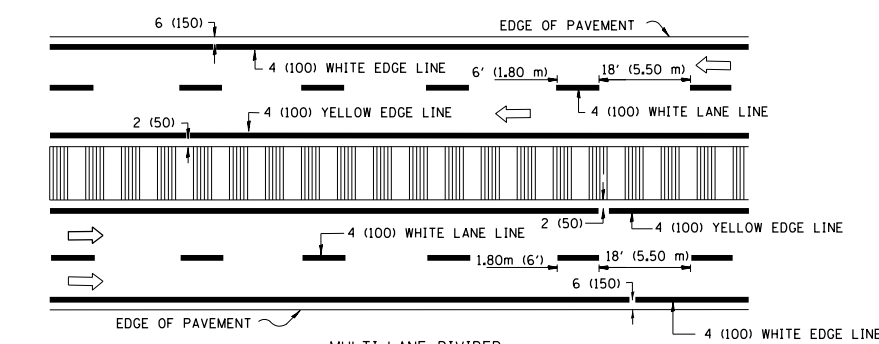
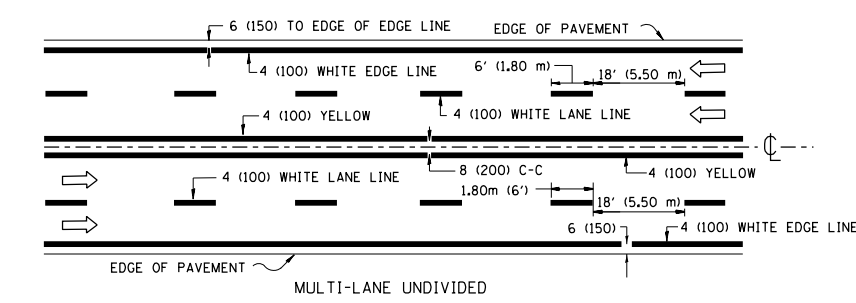


TYPICAL ISLAND MARKING

TYPE OF MARKING	WIDTH OF LINE	PATTERN	COLOR	SPACING / REMARKS
CENTERLINE ON 2 LANE PAVEMENT	4 (100)	SKIP-DASH	YELLOW	6' (1.80 m) LINE WITH 18' (5.50 m) SPACE
CENTERLINE ON MULTI-LANE UNDIVIDED PAVEMENT	2 @ 4 (100)	SOLID	YELLOW	8 (200) C-C
NO PASSING ZONE LINES: FOR ONE DIRECTION FOR BOTH DIRECTIONS	4 (100) 2 @ 4 (100)	SOLID SOLID	YELLOW YELLOW	8 (200) C-C
LANE LINES	4 (100) 5 (125) ON FREEWAYS	SKIP-DASH SKIP-DASH	WHITE WHITE	6' (1.80 m) LINE WITH 18' (5.50 m) SPACE
DOTTED LINES (EXTENSIONS OF CENTER, LANE OR TURN LANE MARKINGS)	SAME AS LINE BEING EXTENDED	SKIP-DASH	SAME AS LINE BEING EXTENDED	2' (600) LINE WITH 6' (1.8) SPACE
EDGE LINES	4 (100)	SOLID	YELLOW-LEFT WHITE-RIGHT	OUTLINE MOUNTABLE MEDIANS IN YELLOW; EDGE LINES ARE NOT USED NEXT TO BARRIER CURB
TURN LANE MARKINGS	6 (150) LINE; FULL SIZE LETTERS & SYMBOLS (8' (2.4 m))	SOLID	WHITE	SEE TYPICAL TURN LANE MARKING DETAIL
TWO WAY LEFT TURN MARKING	2 @ 4 (100) EACH DIRECTION 8' (2.4 m) LEFT ARROW	SKIP-DASH AND SOLID IN PAIRS	YELLOW WHITE	6' (1.8 m) LINE WITH 18' (5.50 m) SPACE FOR SKIP-DASH; 8 (200) C-C BETWEEN SOLID LINE AND SKIP-DASH LINE SEE TYPICAL TWO-WAY LEFT TURN MARKING DETAIL
CROSSWALK LINES A. DIAGONALS (BIKE & EQUESTRIAN) B. LONGITUDINAL BARS (SCHOOL & PEDESTRIAN)	12 (300) @ 45° 24 (600) @ 90°	SOLID SOLID	WHITE WHITE	2' (600) APART 2' (600) APART SEE TYPICAL CROSSWALK MARKING DETAILS.
STOP LINES	24 (600)	SOLID	WHITE	PLACE 4' (1.2 m) IN ADVANCE OF AND PARALLEL TO CROSSWALK, IF PRESENT. OTHERWISE, PLACE AT DESIRED STOPPING POINT. PARALLEL TO CROSSROAD CENTERLINE, WHERE POSSIBLE
PAINTED MEDIANS	2 @ 4 (100) WITH 12 (300) DIAGONALS @ 45°	SOLID	YELLOW; TWO WAY TRAFFIC WHITE; ONE WAY TRAFFIC	8 (200) C-C FOR THE DOUBLE LINE SEE TYPICAL PAINTED MEDIAN MARKING.
GORE MARKING AND CHANNELIZING LINES	8 (200) WITH 12 (300) DIAGONALS @ 45°	SOLID	WHITE	DIAGONALS: 20' (6.1 m) (LESS THAN 30 MPH (50 km/h))
RAILROAD CROSSING	24 (600) TRANSVERSE LINES; "RR" IS 6' (1.8 m) LETTERS; 16 (400) LINE FOR "X"	SOLID	WHITE	SEE STATE STANDARD 780001 AREA OF: "R"=3.6 SQ. FT. (0.33m ²) EACH "X"=54.0 SQ. FT. (5.0 m ²)

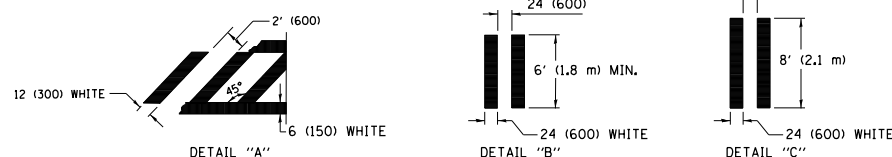
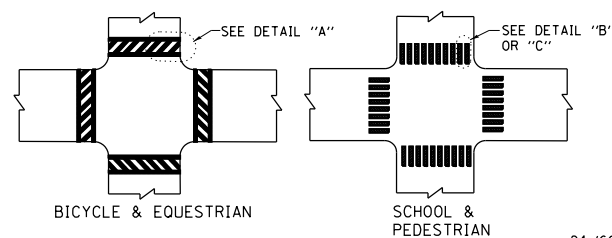
FOR FURTHER DETAILS ON PAVEMENT MARKING REFER TO STREET MARKING STANDARDS, PRINTED BY CITY OF CHICAGO, DEPARTMENT OF TRANSPORTATION, BUREAU OF TRAFFIC.

ALL DIMENSIONS ARE IN INCHES (MILLIMETERS) UNLESS OTHERWISE SHOWN.



NOTE: MEDIANS WITH BARRIER CURB DO NOT REQUIRE AN EDGE LINE

TYPICAL LANE AND EDGE LINE MARKING



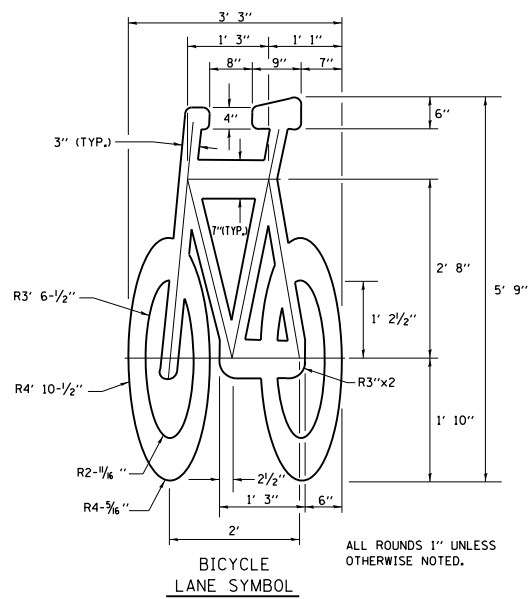
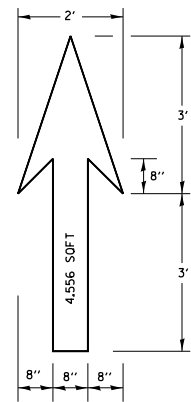
TYPICAL CROSSWALK MARKING

FILE NAME =	USER NAME = dahhnr	DESIGNED -	REVISED - T. RAMMACHER 12-07-00
pw:\11084EBIDINTEG.111nois.gov\PIWDDT\Documents\DOT Offices\District 1\Projects\DI16\BID\Bids\Design\Diststd.dgn		CHECKED -	REVISED - K. ENG 02-28-12
		DATE -	REVISED -

STATE OF ILLINOIS
DEPARTMENT OF TRANSPORTATION

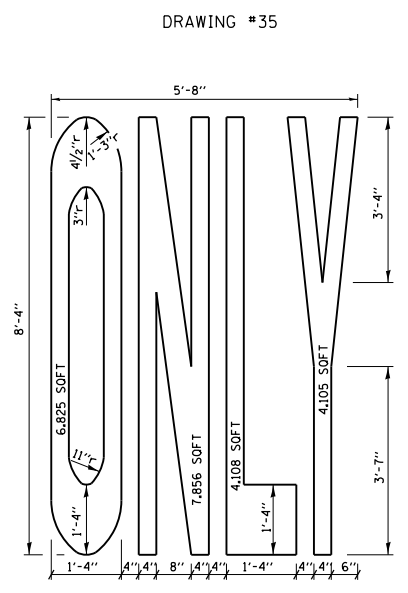
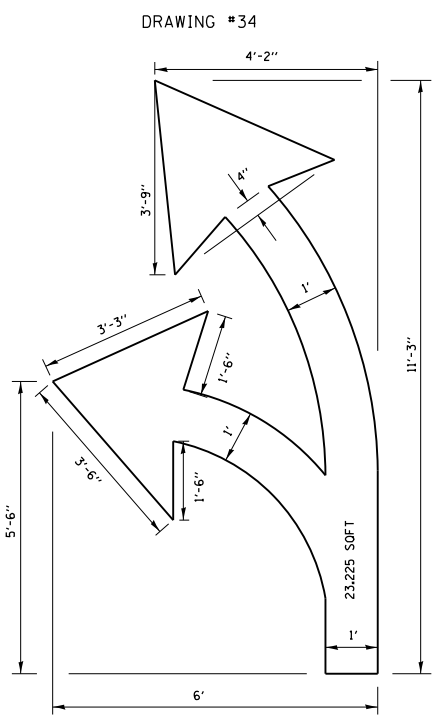
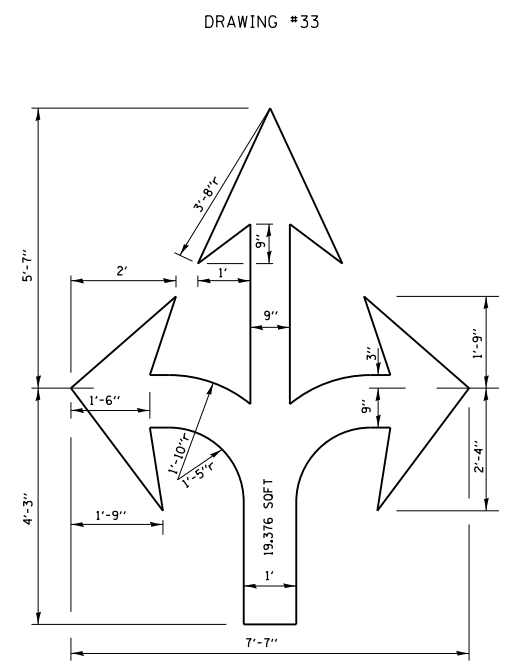
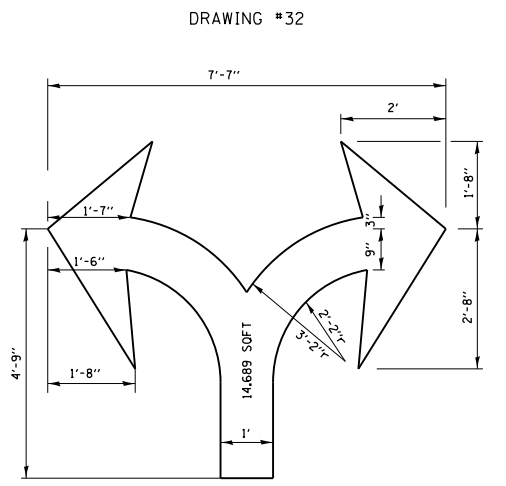
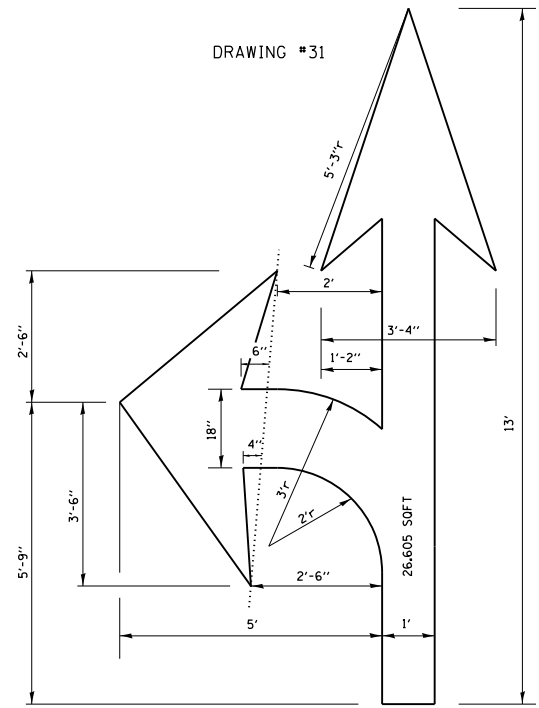
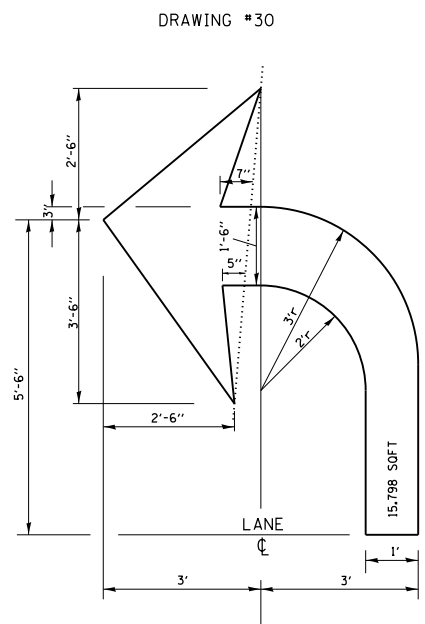
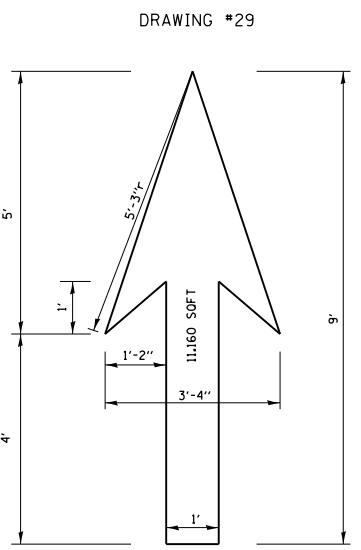
CITY OF CHICAGO			
TYPICAL PAVEMENT MARKINGS			
SCALE: NONE	SHEET NO. 1 OF 3 SHEETS	STA. TO STA.	

F.A.U. RTE.	SECTION	COUNTY	TOTAL SHEETS	SHEET NO.
1360	21-BZ-1-BR-1	COOK	20	18
TC-24		CONTRACT NO. 62B85		
FED. ROAD DIST. NO. 1 ILLINOIS FED. AID PROJECT				



NOTE:
 1.) FOR BIKE LANE SYMBOLS ONLY, USE PRE-FORMED THERMOPLASTIC WITH A MINIMUM THICKNESS OF 90 MILS, MINIMUM SKID RESISTANCE VALUE OF 60 BPN, & A MINIMUM INDEX OF REFRACTION OF 1.50.
 2.) THE RESIDENT ENGINEER SHALL CONTACT MR. BEN GOMBERG AT 312-744-8093 AT LEAST ONE CALENDAR WEEK PRIOR TO INSTALLING BIKE LANE SYMBOLS.

TYPICAL BIKE LANE SYMBOLS
DRAWING #28



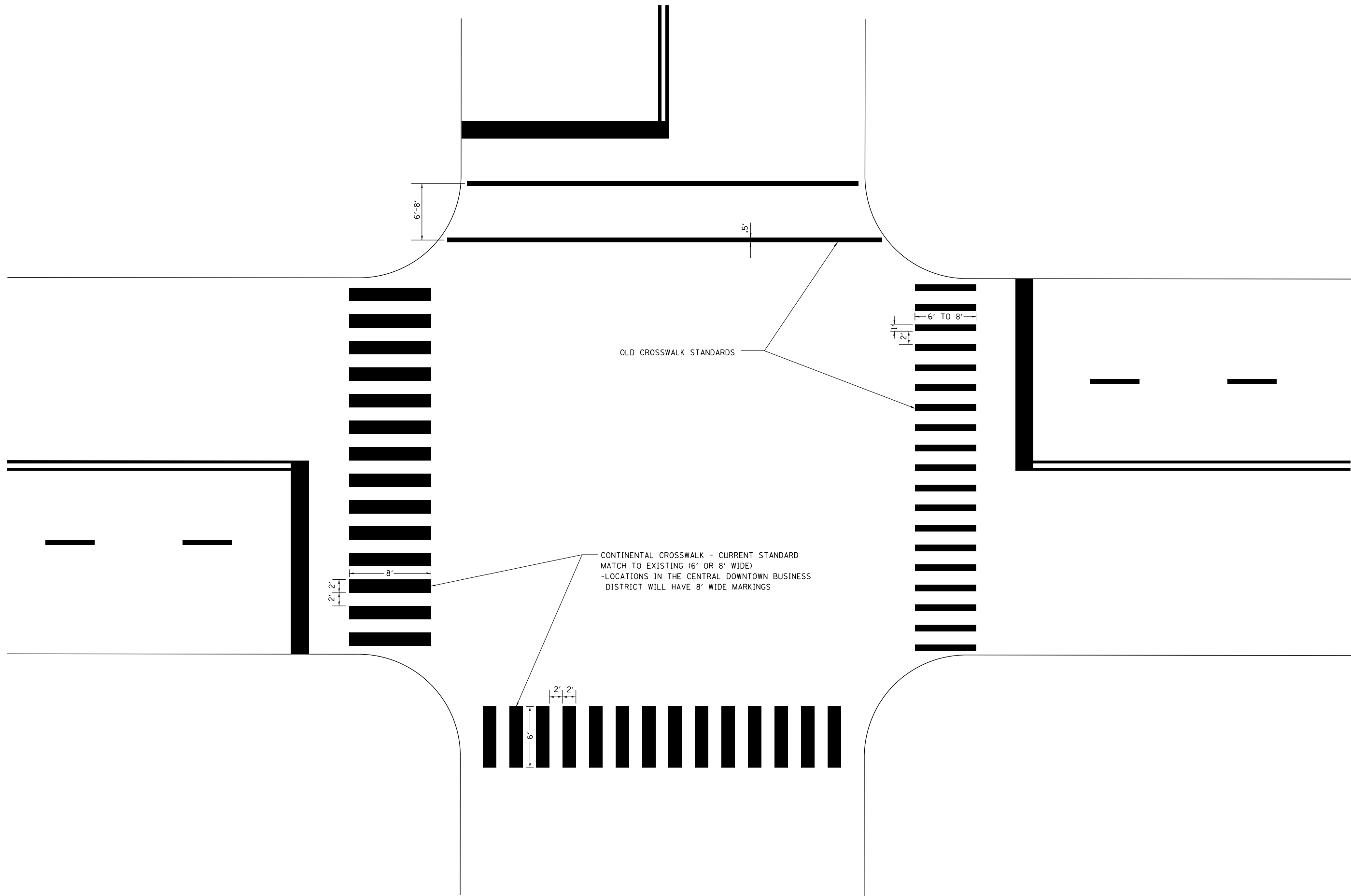
NOTE:
ALL MARKINGS SHALL BE SOLID WHITE UNLESS OTHERWISE NOTED IN THE PLANS

FILE NAME =	USER NAME = dahhan	DESIGNED -	REVISED - T. RAMMACHER 12-07-00
pw\11084EBIDINTEG.illinois.gov\PIWIDOT\Documents\DOT Offices\District 1\Projects\DI16\BID\Bids\Design\Diststd.dgn		CHECKED -	REVISED - K. ENG 01-12-12
PLOT SCALE = 100.0000' / 1"		DATE -	REVISED -
PLOT DATE = 3/30/2016			

STATE OF ILLINOIS
DEPARTMENT OF TRANSPORTATION

CITY OF CHICAGO			
TYPICAL PAVEMENT MARKINGS			
SCALE: NONE	SHEET NO. 2 OF 3 SHEETS	STA.	TO STA.

F.A.U. RTE.	SECTION	COUNTY	TOTAL SHEETS	SHEET NO.
1360	21-BZ-1-BR-1	COOK	20	19
TC-24		CONTRACT NO. 62B85		
FED. ROAD DIST. NO. 1 ILLINOIS FED. AID PROJECT				



FILE NAME =	USER NAME = dahhr	DESIGNED -	REVISED - T. RAMMACHER 12-07-00
p:\11\084EBIDINTEG.illinois.gov\PIWIDOT\Documents\IDOT Offices\District 1\Projects\DI16\Drawings\Design\Diststd.dgn		DRAWN -	REVISED - K. ENG 01-12-12
	PLOT SCALE = 100.0000' / in.	CHECKED -	REVISED -
	PLOT DATE = 3/30/2016	DATE -	REVISED -

**STATE OF ILLINOIS
DEPARTMENT OF TRANSPORTATION**

CITY OF CHICAGO			
TYPICAL PAVEMENT MARKINGS			
SCALE: NONE	SHEET NO. 3 OF 3 SHEETS	STA.	TO STA.

F.A.U. RTE.	SECTION	COUNTY	TOTAL SHEETS	SHEET NO.
1360	21-BZ-1-BR-1	COOK	20	20
TC-24		CONTRACT NO. 62B85		
FED. ROAD DIST. NO. 1 ILLINOIS FED. AID PROJECT				